

See page 2 for component details and weld map

- REMARKS:
- 304 stainless steel construction.
  - Countries of origin for pressure retaining components to be limited to Denmark, Finland, Greece, Ireland, Israel, Italy, Japan, North America, Portugal, South Africa, South Korea, Spain, Sweden, Taiwan, Turkey, United Kingdom and Western Europe.
  - Design: 225 PSIG at 170°F with 0.063 corrosion allowance.  
Design: Full vacuum at 350°F with 0.063 corrosion allowance.
  - MAWP (stamped): 290 PSIG at 170°F with 0.063 corrosion allowance.  
MAWP (stamped): Full vacuum at 350°F with 0.063 corrosion allowance.
  - MDMT: -20°F at 290 PSIG.
  - Component limiting MAWP: Main shell, pipe.
  - Constructed per ASME Section VIII Division 1, 'U' stamped and National Board registered.
  - Bolt holes at flanges to straddle center lines.
  - Flow arrow to be weld bead per EN-11014.
  - PMI testing required on all pressure retaining components.
  - Radiography per ASME RT3 required, minimum joint efficiency = 85%
  - Hydrostatically test at 378 PSIG, hold 2 hours minimum. Test water max chloride content 25 ppm.
  - No other non-destructive testing required.
  - Interior surfaces: Clean per NAFCO specification EN-11006, Coat: none.
  - Exterior surfaces: Standard brush/wipe clean, Paint: none.
  - Vessel to have painted: equipment number, project number, title, and total weight. o be legible at 50 foot distance.
  - Flange openings to have wood or metal protective shipping covers.
  - Vessel to be shipped with (2) spare closure gaskets, (20) spare closure studs and (40) spare closure nuts.
  - Approximate weight: dry/operating 1500 lb., flooded 2093 lb.

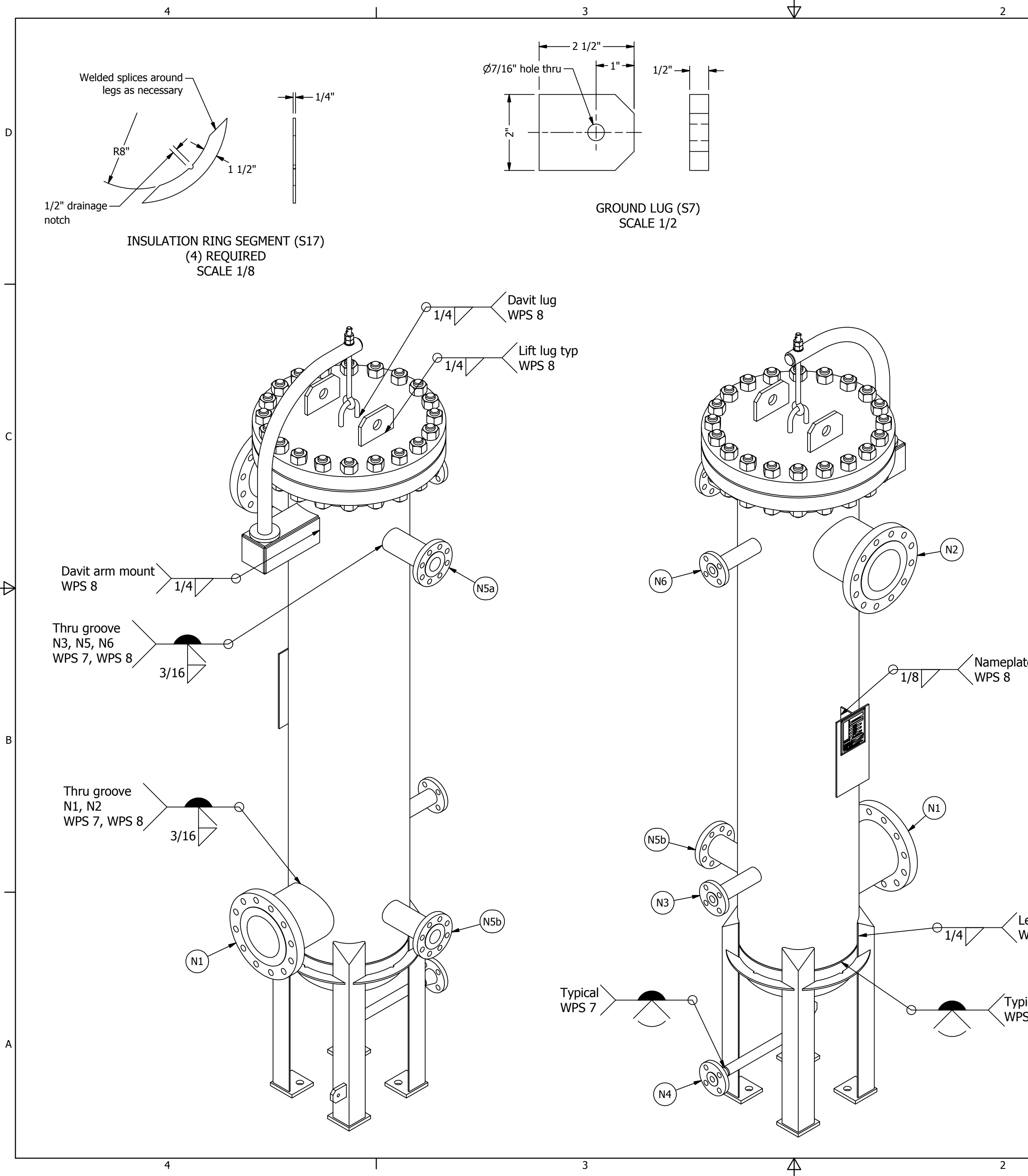
Ventech XTL Oklahoma City, LLC  
 Project number: 4777-010  
 Project name: 250 BPSD GTL PLANT PROJECT  
 Location: OKLAHOMA CITY, OK  
 Equipment name: SYNGAS FILTER COALESCER  
 Equipment tag: F-301  
 Purchase order: 477010-15-00147

Connection Detail				
Item	Qty	Function	Size/Type	Material
N1	1	Inlet	6"-300# RFLWN ASME B16.5 flange	SA-182 Gr F304
N2	1	Outlet	6"-300# RFLWN B16.5 flange	SA-182 Gr F304
N3	1	Drain, Top	1"-300# RFLWN B16.5 flange	SA-182 Gr F304
N4	1	Drain, Bottom	1"-300# R.F.W.N. B16.5 flange	SA-182 Gr F304
N5	2	Pressure Tap	2"-300# RFLWN B16.5 flange	SA-182 Gr F304
N6	1	Vent	1"-300# RFLWN B16.5 flange	SA-182 Gr F304

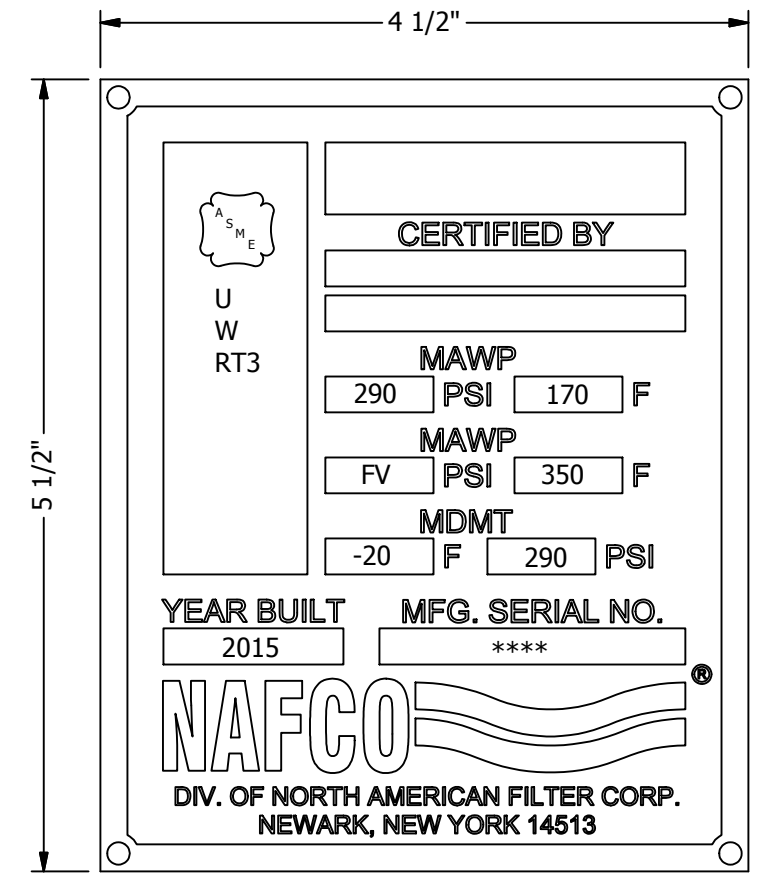
LATEST REVISION			
REV	DESCRIPTION	DATE	APP
A	Update per customer approval mark up dated 2/23/2015	3/4/2015	REH

		<small>Confidential document, Duplication prohibited          Property of North American Filter Corporation          200 Westshore Blvd., Newark, New York 14513          Telephone 800-265-8943 Fax 315-331-4750</small>	
<b>ORIGINAL ISSUE</b> DRAWN: reh 2/3/2015 CHECKED: TWH 2/6/2015 APPROVED: reh 2/6/2015		<b>Coalescing Filter</b> Model: 53060-F16B/304SS Item # F-301	
<small>UNLESS OTHERWISE NOTED          BREAK EDGES/REMOVE BURRS          UNITS: LINEAR INCHES; ANGULAR DEGREES          GENERAL TOLERANCES:±          FRACTIONAL: 1/4 DECIMAL: ~          ANGULAR: 1 REFERENCE: (X)</small>		DRAWING NUMBER <b>13759</b>	DRAWING TYPE <b>GA</b>
SHEET SIZE <b>C</b>	NUMBER <b>1 OF 2</b>	SCALE <b>NOTED</b>	THIRD ANGLE PROJ 
STATUS <b>Released</b>		REVISION <b>A</b>	



Component Detail					
Item	Qty	Name	Part Number	Description	Material
S1	8	Coalescing Cartridge	2-3187-104SS		
S2	1	Davit Arm		1 1/2" Sch. XH pipe	Stainless Steel, 304
S3	1	Davit Pivot Bracket			SA-479 Gr 304
S4	1	Flange, ANSI B16.5		16"-300# R.F.W.N.	SA-182 Gr F304
S5	1	Flange, ANSI B16.5		16"-300# RF Blind	SA-182 Gr F304
S6	1	Gasket, Closure	GBSPF0555	Graphite filler, CS outer ring, size for 16" class 300 ANSI B16.5 flange	Stainless Steel, 304 Winding
S7	1	Ground Lug			SA-479 Gr 304
S8	1	Head, Weld Cap		16 Sch 10 (0.250 wall) ASME B16.9	SA-403 Gr 304, High
S9	4	Leg Assembly		Angle 3 X 3 X 1/4	SA-479 Gr 304
S10	1	Nameplate		For ASME stamped vessels	Stainless Steel, 304
S11	1	Nameplate Bracket		6" x 12" standard size	Stainless Steel, 304
S12	40	Nut, Hex, Heavy		1 1/4-8 UN	SA194-2H
S13	1	Pipe		1" Sch 160 (0.250" wall)	SA-312 TP304 WLD
S14	1	Pipe, Shell		16 Sch 10 (0.250 wall)	SA-312 TP304 WLD
S15	20	Stud		1 1/4-8 UN plated, threaded full lth.	SA193-B7
S16	1	Tube Sheet Assembly		2 1/2" NPT coupling (8) places	SA240 Gr 304
S17	4	Insulation Ring, Bottom			SA-240 Gr 304



ASME NAMEPLATE SCALE 3/4

LATEST REVISION			
REV	DESCRIPTION	DATE	APP
A	Update per customer approval mark up dated 2/23/2015	3/4/2015	REH

		<small>Confidential document, Duplication prohibited Property of North American Filter Corporation 200 Westshore Blvd., Newark, New York 14513 Telephone 800-265-8943 Fax 315-331-4750</small>	
<b>Coalescing Filter</b> Model: 53060-F16B/304SS Item # F-301			
ORIGINAL ISSUE DRAWN: reh 2/3/2015 CHECKED: TWH 2/6/2015 APPROVED: reh 2/6/2015		DRAWING NUMBER <b>13759</b>	
UNLESS OTHERWISE NOTED BREAK EDGES/REMOVE BURRS UNITS: LINEAR INCHES; ANGULAR DEGREES GENERAL TOLERANCES:±		DRAWING TYPE <b>GA</b>	
FRACTIONAL: 1/4 DECIMAL: ~ ANGULAR: 1 REFERENCE: (X)		REVISION <b>A</b>	
SHEET SIZE <b>C</b>		STATUS <b>Released</b>	