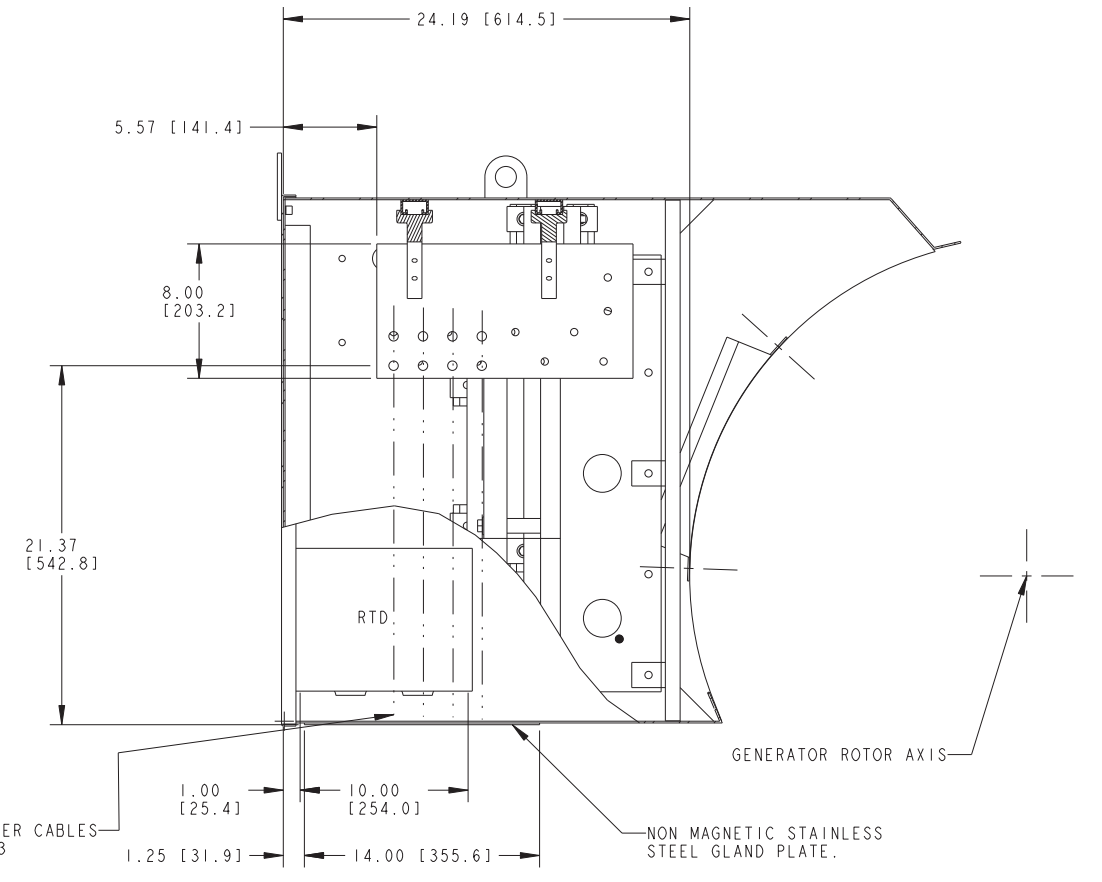
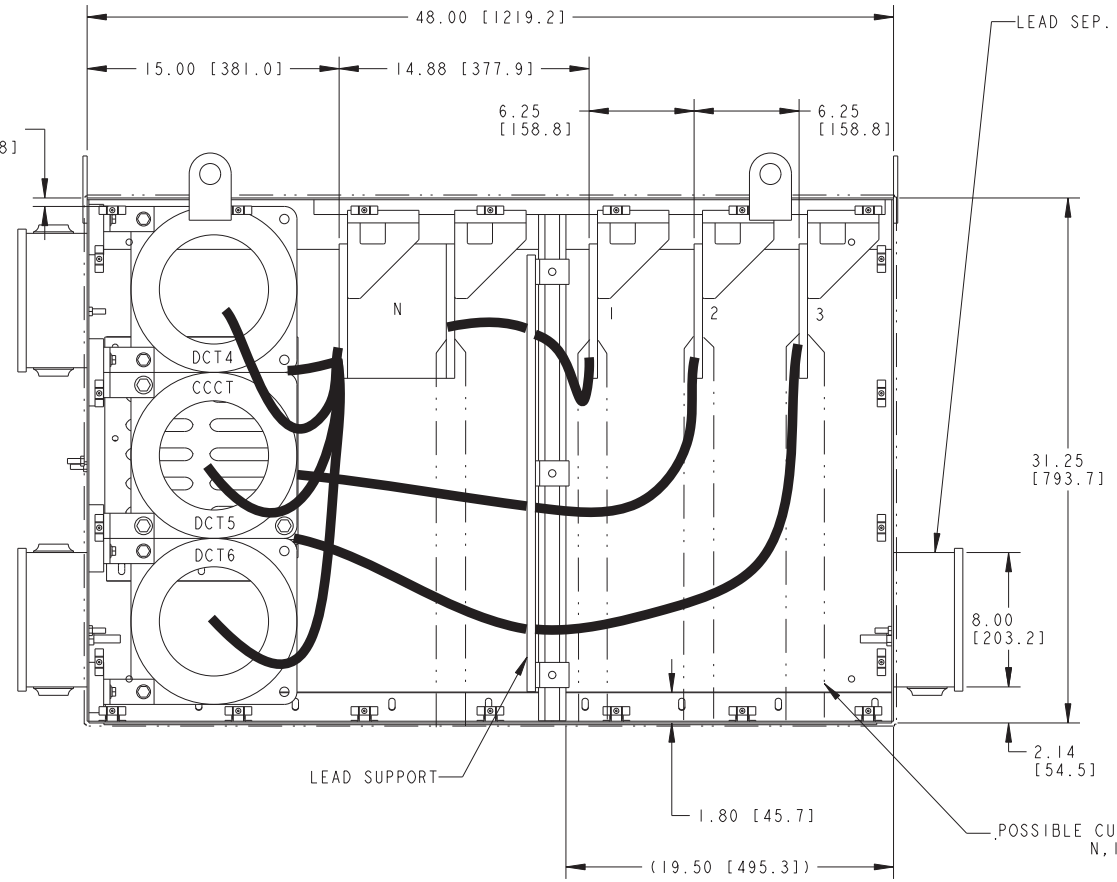
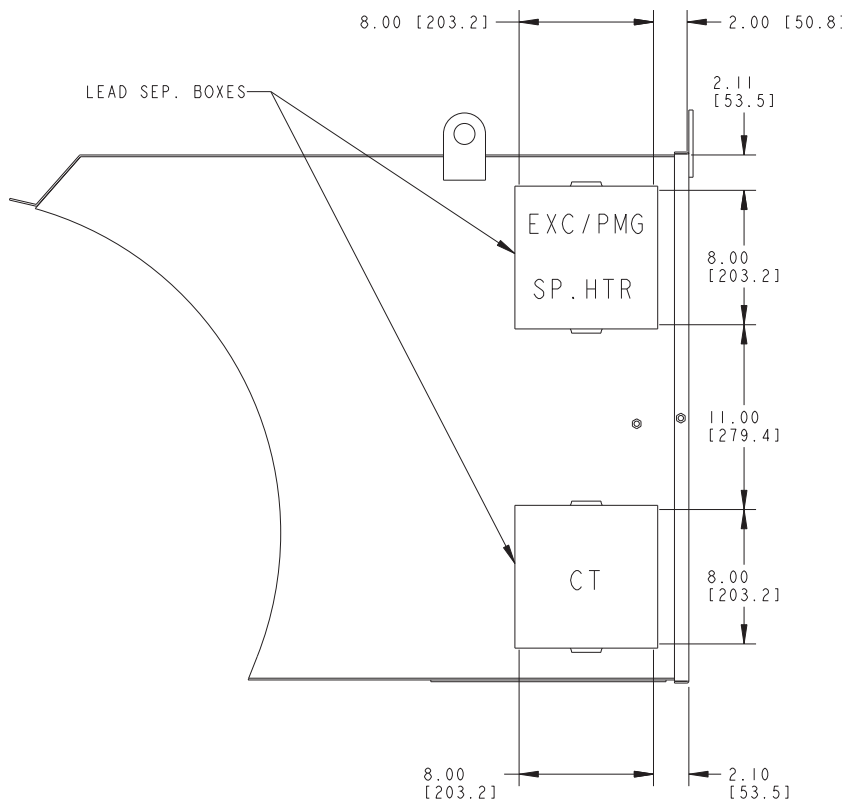
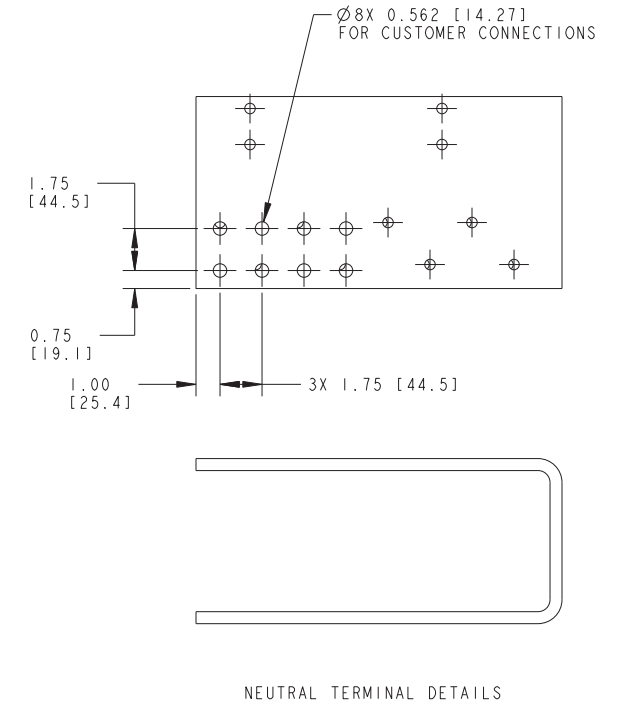
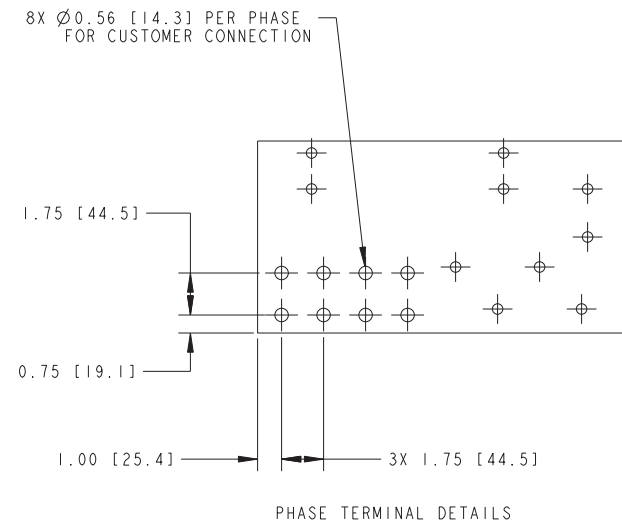
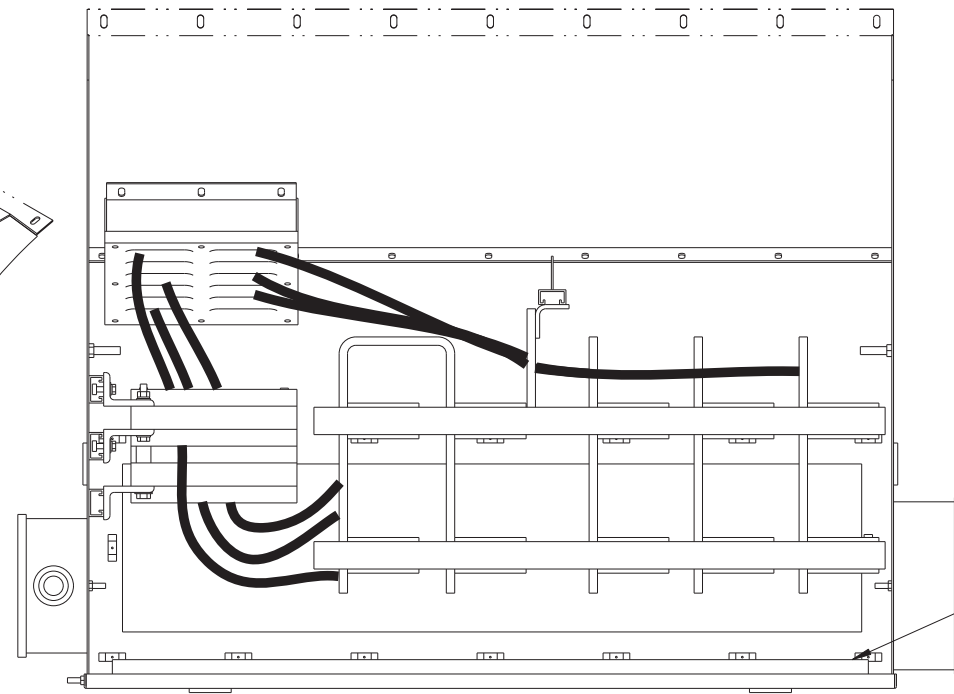
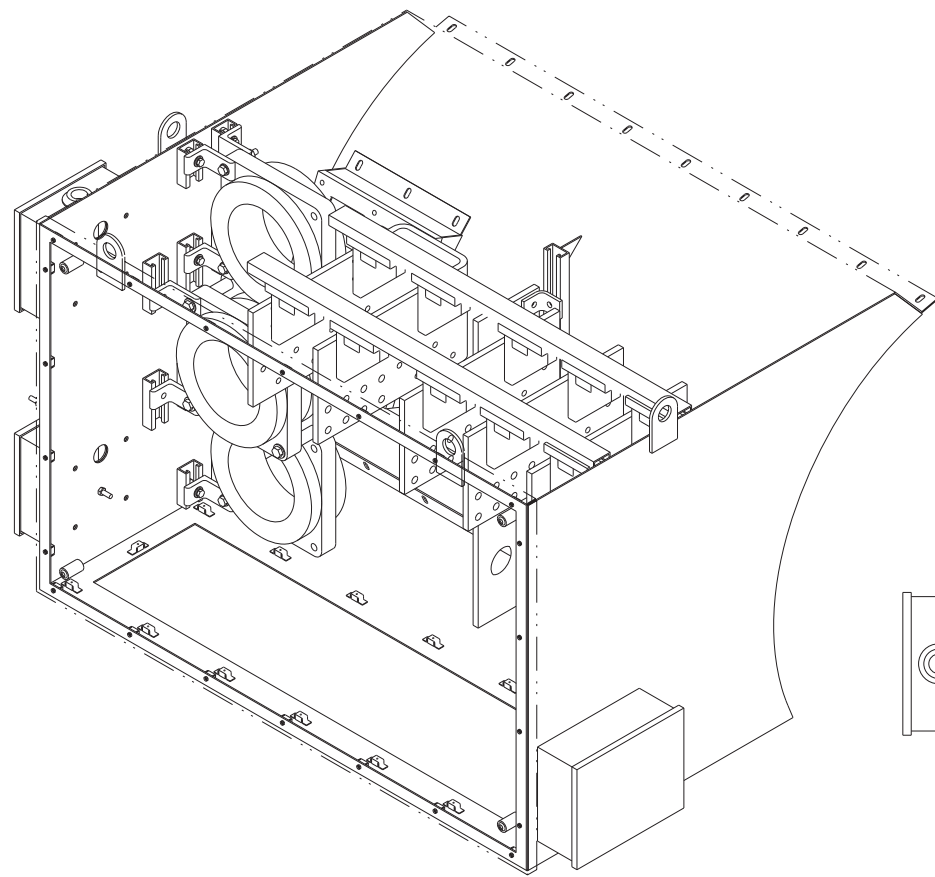


- NOTES:
- SHIPPING INFORMATION (REFERENCE ONLY)
    - APPROXIMATE WEIGHT: 12500 LB [5670 KG]
  - [ ] = DIMENSIONS IN MILLIMETERS

ECD	PRELIMINARY	SCALE	REV	<b>Kato Engineering</b> 2075 Howard Drive West North Mankato, MN 56003 DRAWING NUMBER: 102-60986-74
THE INFORMATION HEREIN IS THE PROPERTY OF KATO ENGINEERING. WITHOUT WRITTEN PERMISSION, ANY COPYING, TRANSMITTAL TO OTHERS, OR ANY USE EXCEPT THAT FOR WHICH IT IS LOANED IS PROHIBITED.		0.100	A	
INCHES THIRD ANGLE PROJECTION		DK-EDEC	DK-EDEC	
TITLE 4P8.2-1900 KATO GENERATOR		11JUN2015	39014	



NOTES:

1. SEE DIMENSIONAL DRAWING FOR SIZE & LOCATION OF OUTLET BOX

2. [ ] = DIMENSIONS IN MILLIMETERS

VIEW FROM GENERATOR DRIVE END

ECO		SCALE 0.200		REV A		<b>Kato Engineering</b> 2075 Howard Drive West North Mankato, MN 56003
THE INFORMATION HEREON IS THE PROPERTY OF KATO ENGINEERING. WITHOUT WRITTEN PERMISSION, ANY COPYING, TRANSMITTAL TO OTHERS AND ANY USE EXCEPT THAT FOR WHICH IT IS LOANED IS PROHIBITED.		DRW SIZE D	FIRST SN 39014	26 JUN 2015		
TOLERANCE UNLESS OTHERWISE SHOWN	.XX ±0.06	INCHES	DK-EDEC	DK-EDEC	MATL:	DRAWING NUMBER SHT 1 OF 1
DRILLED HOLES	+0.015	THIRD ANGLE PROJECTION	TITLE		107-60607-65	
HOLE DEPTH	-0.005 ±0.030	7/2015 CERTIFIED FOR: ELLIOTT COMPANY; PO #: 334698; PROJECT NAME: VENTECH; KATO SN: 39014				

ENCLOSURES WITH THIS LINE TYPE, ARE INDIVIDUAL LEAD JUNCTION BOXES, UNLESS OTHERWISE NOTED.

LEGEND

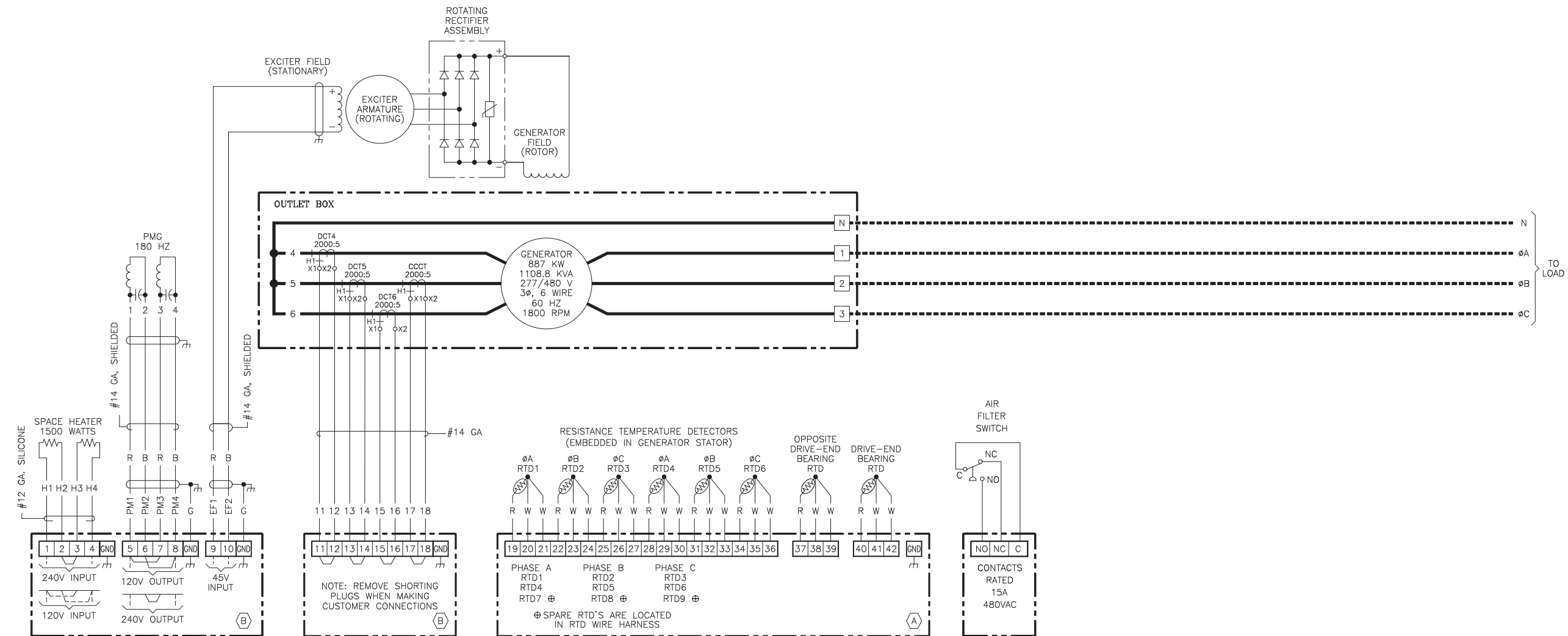
CCCT - PARALLELING CURRENT TRANSFORMER  
DCT - DIFFERENTIAL CURRENT TRANSFORMER

NOTES:

1. KATO ENGINEERING RECOMMENDS SHIELDED WIRING FOR MAXIMUM EMI SUPPRESSION. USE TWISTED PAIR, SHIELD GROUNDED TO CHASSIS AT BOTH ENDS, ON ALL SHIELDED WIRING.
2. ALL CT'S ARE INSTRUMENT TRANSFORMER INC. MODEL #780. (FOR CT RATING, REFER TO INDIVIDUAL CT).
3. ALL RTD WIRING #22 AWG MINIMUM.
4. ALL WIRING RATED 600V. MINIMUM UNLESS OTHERWISE STATED.
5. USE FIELD INSTALLED LOAD CABLES SUITABLE FOR 110° C MINIMUM.

TERMINAL LEGEND

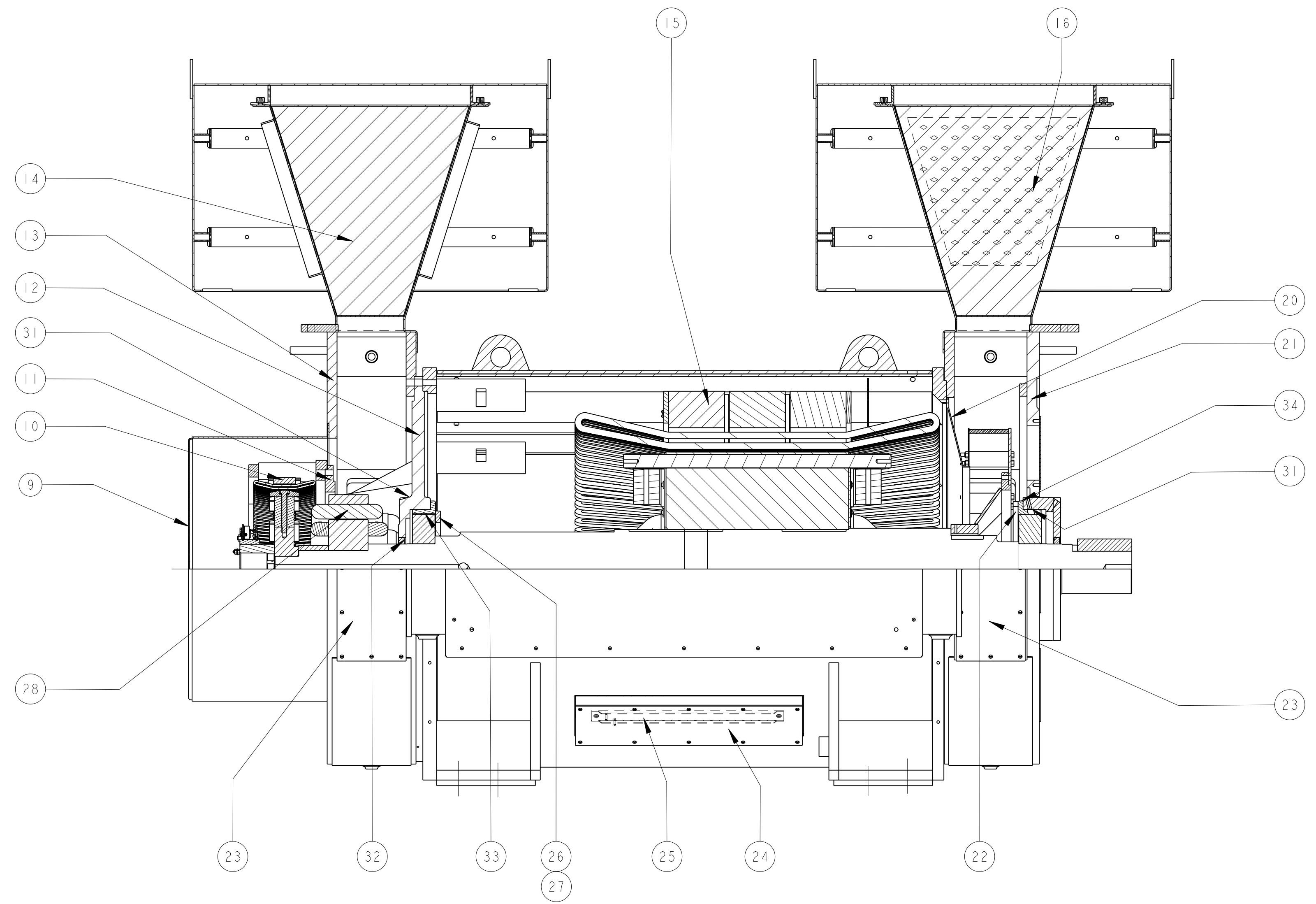
- (A) TERMINALS = PHOENIX PT 2,5-TWIN AWG #26-12; 0.14-2.5mm<sup>2</sup>
- (B) TERMINALS = PHOENIX PT 4-TWIN AWG #24-10; 0.2-4mm<sup>2</sup>



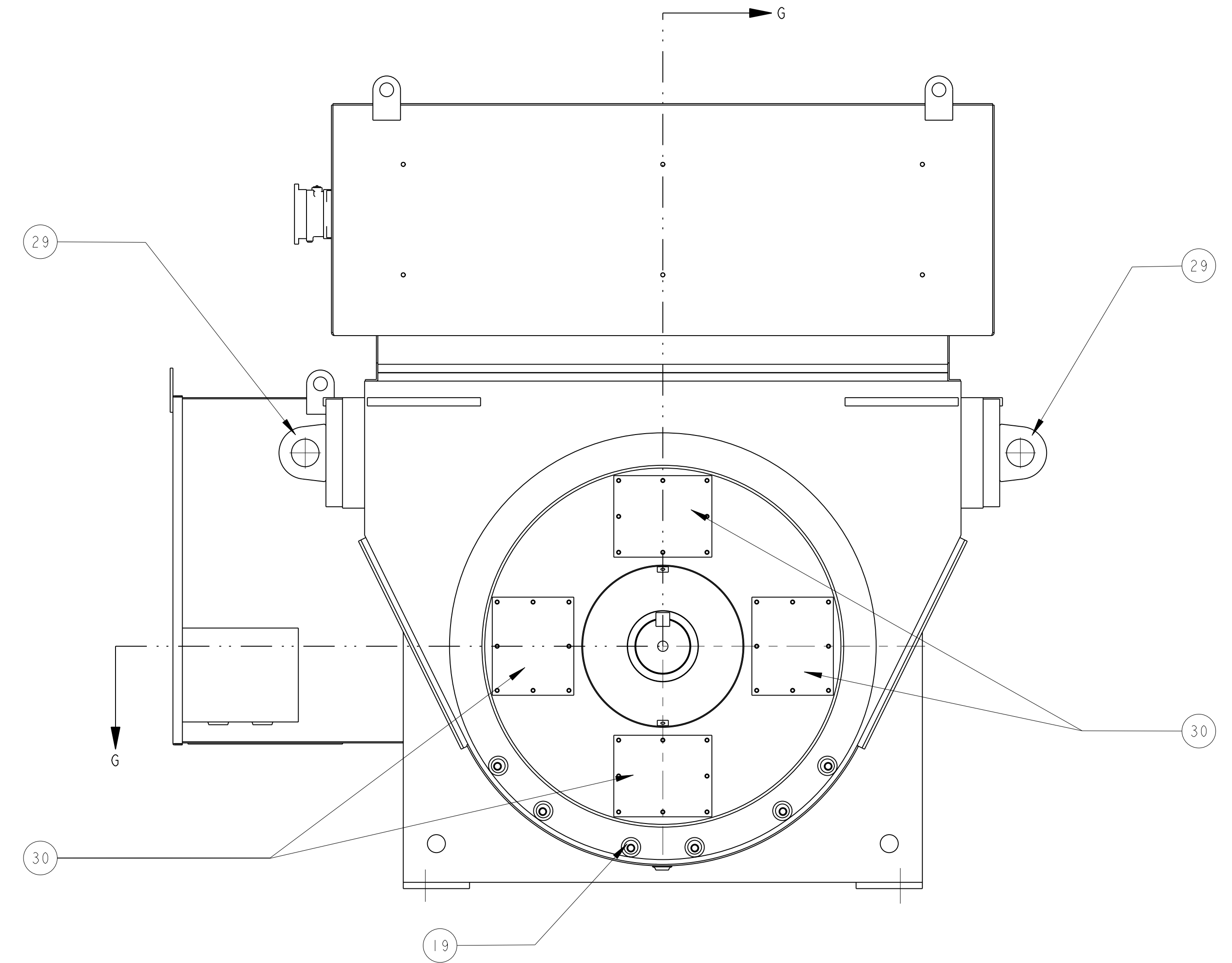
RESISTANCE TEMPERATURE DETECTORS		
TYPE	RESISTANCE	TEMPERATURE
PLATINUM	100 OHMS	0°C
RED - WHITE:	TEMPERATURE SENSING ELEMENT	
WHITE - WHITE:	LEAD RESISTANCE COMPENSATION	

RECOMMENDED MAXIMUM RTD SETTINGS FOR TCR 0.00385		
CONDITION	PRE-ALARM	SHUTDOWN
STATOR	159.18 OHMS @155°C	162.90 OHMS @165°C
BEARING	132.80 OHMS @85°C	136.60 OHMS @95°C

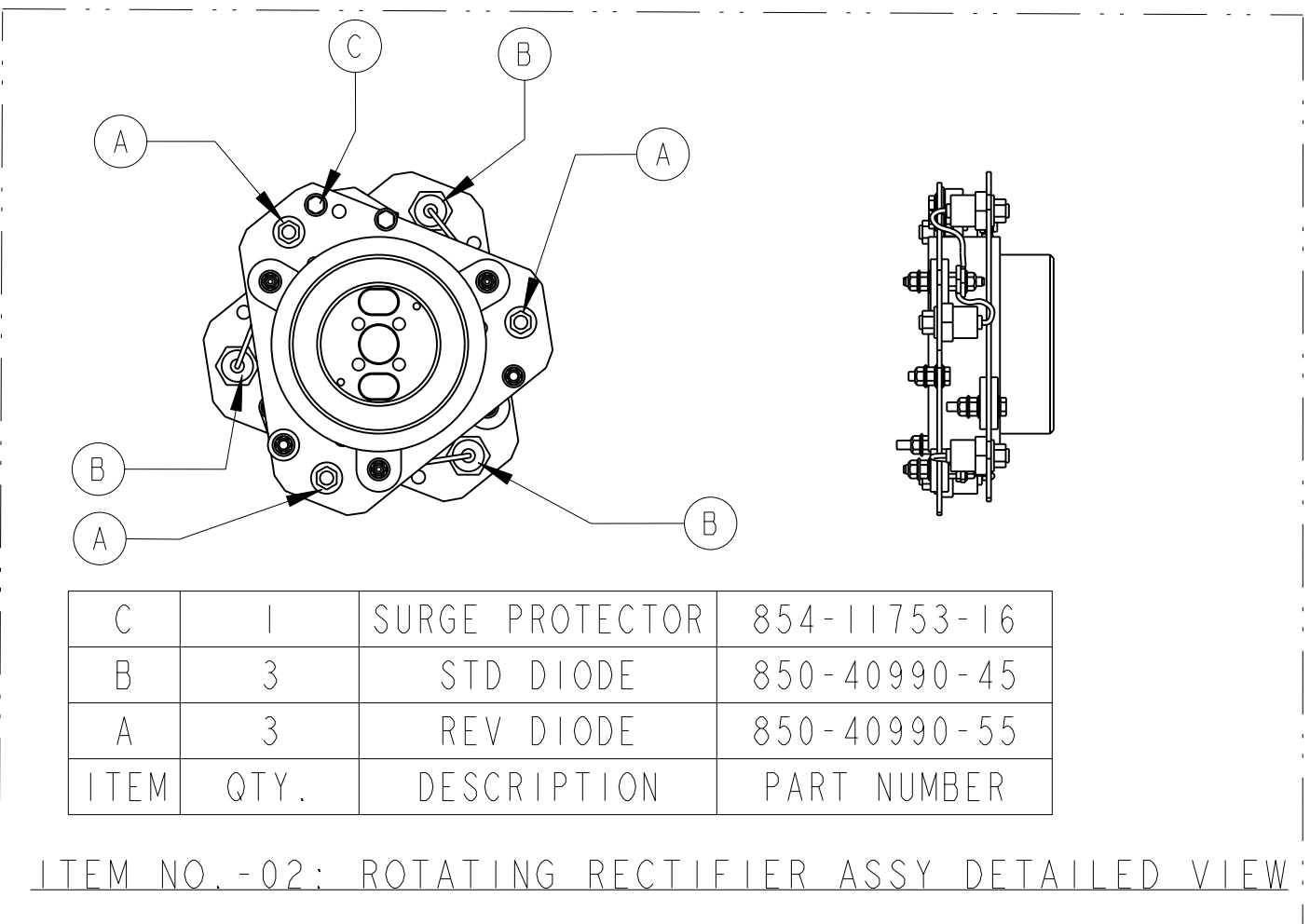
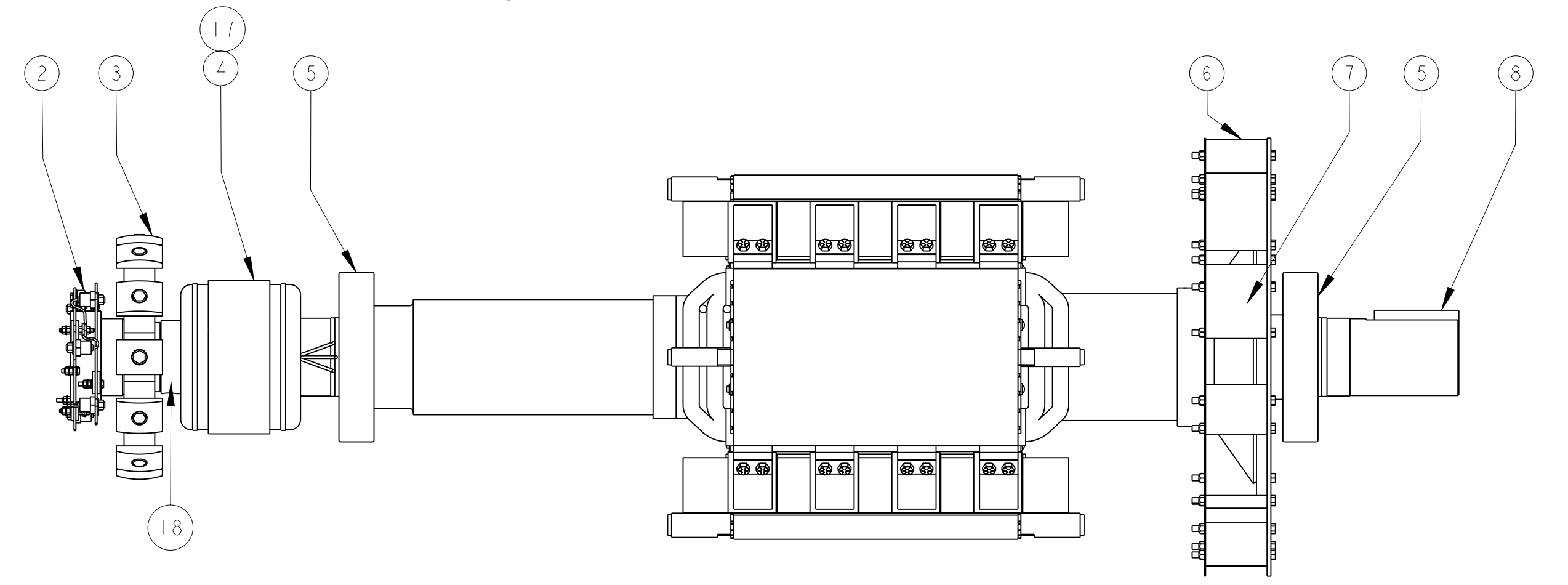
THE INFORMATION HEREON IS THE PROPERTY OF KATO ENGINEERING. WITHOUT WRITTEN PERMISSION, ANY COPYING, TRANSMITTAL TO OTHERS, AND ANY USE EXCEPT THAT FOR WHICH IT IS LOANED IS PROHIBITED.				REV A
VKP-EICP	PAJ-EICP	6-23-15	39014	2075 Howard Drive West North Mankato, MN 56003
TITLE GENERATOR CONNECTION DRAWING				DRAWING NUMBER SH 1 OF 1
				888-00390-14



SECTION G-G



ITEM NO. -01: SHAFT AND ROTOR "C" ASSY DETAILED VIEW



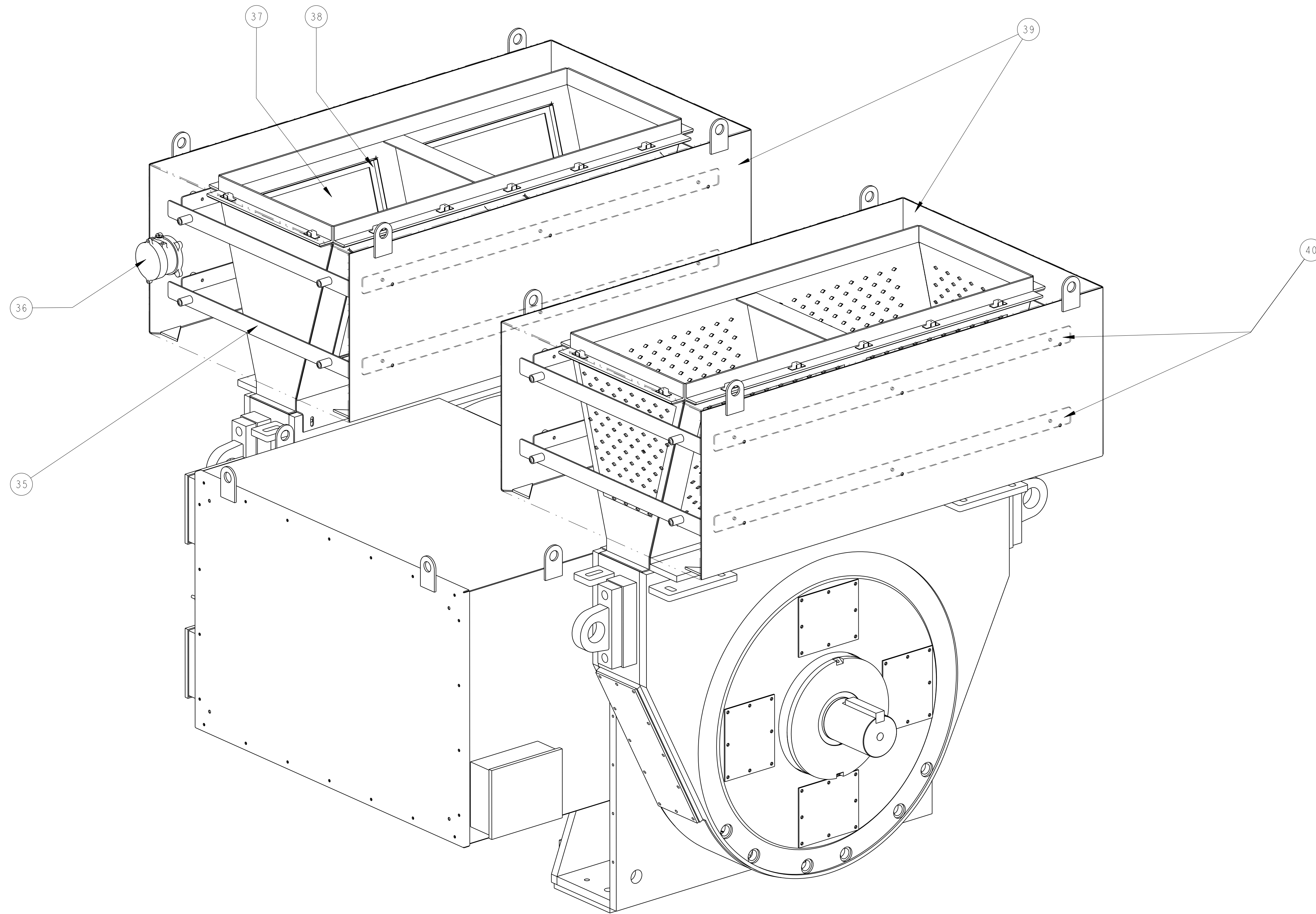
ITEM NO. -02: ROTATING RECTIFIER ASSY DETAILED VIEW

NOTE:  
 I. SHIPPING INFORMATION (REFERENCE ONLY)  
 a. APPROXIMATE WEIGHT: 12500 LB [5670 KG]  
 b. APPROXIMATE SIZE: 95.6 X 79.4 X 73.6 [2429 X 2017 X 1870]

ITEM	QTY	DESCRIPTION	PART NUMBER
20	1	BAFFLE	020-35210-00
19	6	1.25 NPT PLUG	153-00020-22
18	1	SLEEVE SHAFT	42035005
17	1	EXC. ARMATURE KEY .62 x .62 x 5.50	067-10705-52
16	1	ENCLOSURE DE (WP-11)	008-60370-01
15	1	FRAME & STATOR "C" ASSEMBLY	213-M4000-68
14	1	ENCLOSURE ODE (WP-11)	008-60370-02
13	1	ENDBELL ODE-ADAPTOR	004-60326-09
12	1	BEARING BRACKET ODE	004-60323-01
11	1	PM RING BRACKET	002-30100-00
10	1	PMG STATOR "C" ASSY	211-21000-55
9	1	COVER EXC. END	009-23258-09
8	1	KEY- DRIVE	067-11105-52
7	1	FAN HUB	019-19145-54
6	1	FAN	017-29170-00
5	2	BEARING	40884115
4	1	EXCITER ARM "C"	42090452
3	1	PMG ROTOR ASSY	091-20147-02
2	1	ROTATING RECTIFIER ASSEMBLY	040-21462-16
1	1	SHAFT & ROTOR "C" ASSEMBLY	282-M4000-61

ITEM	QTY	DESCRIPTION	PART NUMBER
34	1	BEARING SLEEVE DE	43080101
33	1	BEARING SLEEVE ODE	002-70235-00
32	2	BEARING SEAL	43057601
31	2	BEARING RTD	514-11662-18
30	4	DE ACCESS COVER	008-00934-00
29	4	LIFTING EYE	002-10412-00
28	1	EXCITER FIELD "C" ASSY	42090802
27	2	BEARING INSULATOR	002-80061-00
26	2	BEARING RTNR BAR ODE	43075101
25	2	SPACE HEATER	864-11211-49
24	2	SPACE HEATER COVER	008-90181-01
23	4	ENDBELL ACCESS COVER	008-80523-00
22	2	BEARING RETAINER BAR DE	002-60449-00
21	1	BEARING BRACKET DE	005-60204-10

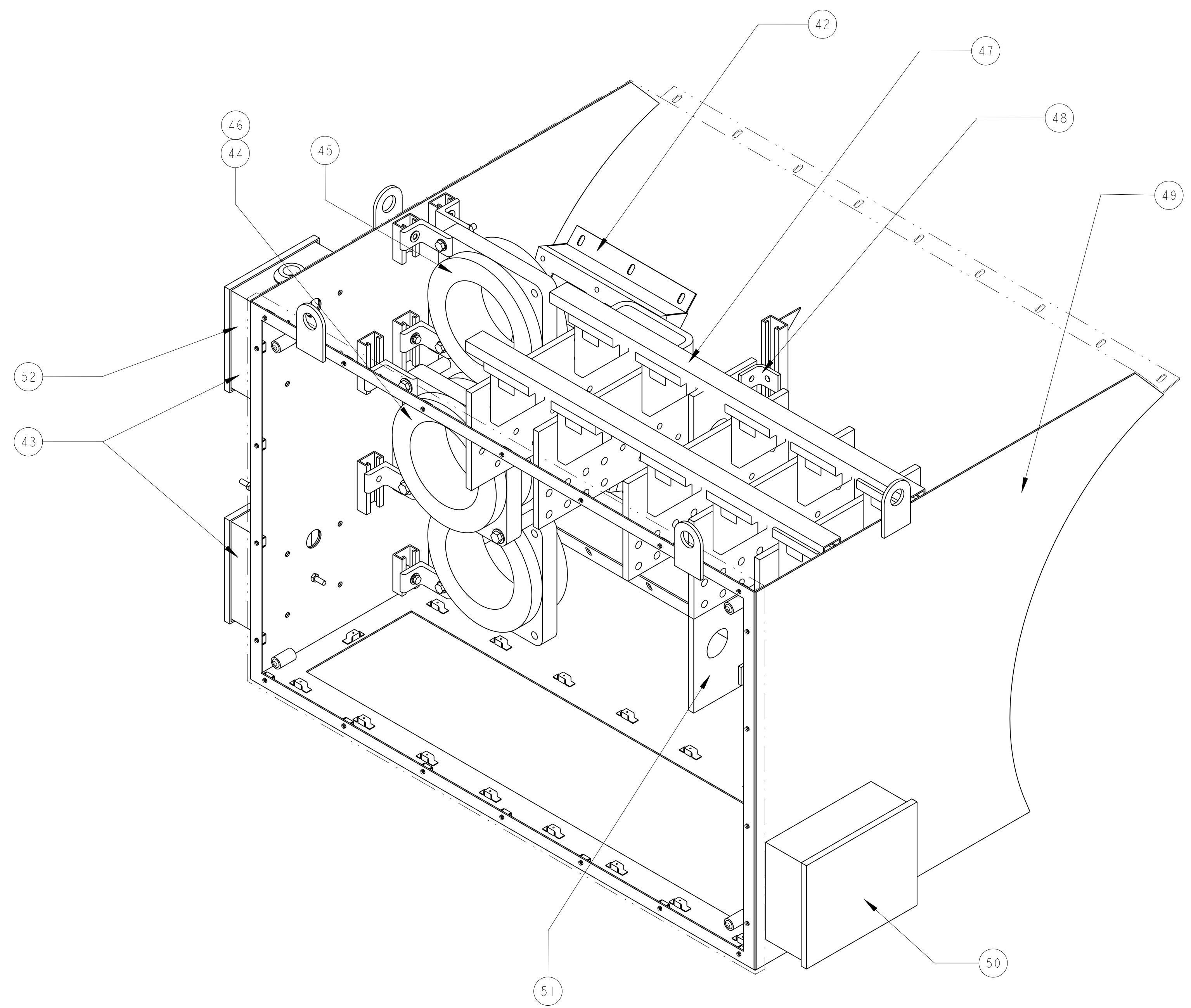
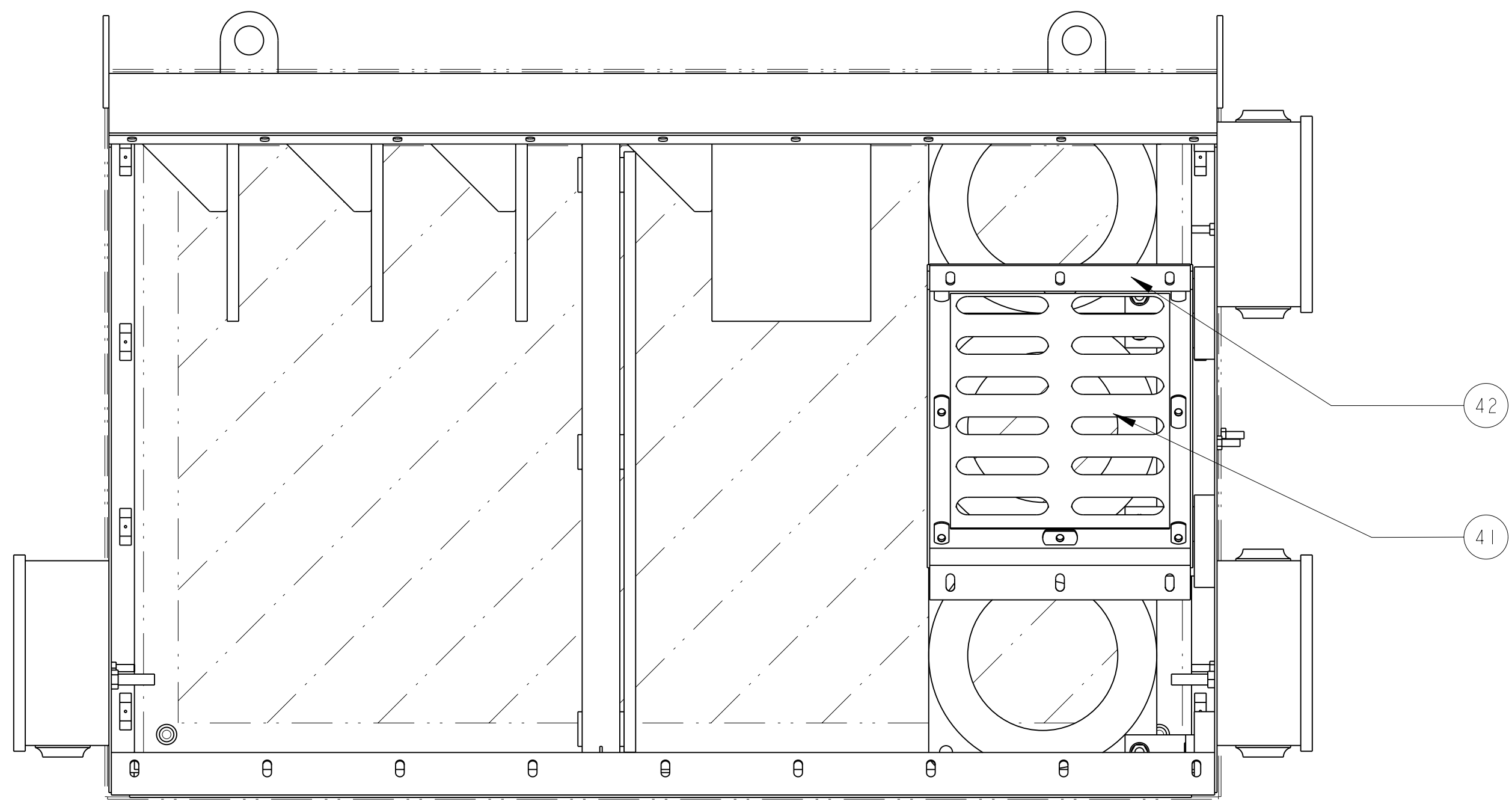
ECO 99975	CHANGE PMG ROTOR FROM 091-20141-02 TO 091-20147-02; SEE ECO FOR MORE DETAILS	DK-EDEC MP-EDEC 25AUG2015	<b>Kato Engineering</b> 2075 Howard Drive West North Mankato, MN 56003 DRAWING NUMBER   SHT 1 OF 3 106-60306-42
THE INFORMATION HEREON IS THE PROPERTY OF KATO ENGINEERING. WITHOUT WRITTEN PERMISSION, ANY COPYING, TRANSMITTAL TO OTHERS, AND ANY USE EXCEPT THAT FOR WHICH IT IS LOANED IS PROHIBITED.		SCALE 0.125 REV B DRW SIZE D FIRST SN 39014	
INCHES THIRD ANGLE PROJECTION		DK-EDEC VDS-EDEC 15JUL2015 39014 TITLE 4P8.2-1800 KATO GENERATOR	



ITEM	QTY	DESCRIPTION	PART NUMBER
40	8	STRAP	153-92002-00
39	2	AIR HOOD	008-60371-01
38	4	AIR FILTER	153-00028-20
37	4	AIR FILTER FRAME	153-00123-23
36	1	AIR FLOW SWITCH	514-03910-61
35	8	STRAP	153-92002-01
BILL OF MATERIAL			

ECO 99975	SEE SHEET 1 OF 3;	DK-EDEC MP-EDEC 25AUG2015	SCALE 0.150	REV B	<b>Kato Engineering</b> 2075 Howard Drive West North Mankato, MN 56003
<small>THE INFORMATION HEREON IS THE PROPERTY OF KATO ENGINEERING. WITHOUT WRITTEN PERMISSION, ANY COPYING, TRANSMITTAL TO OTHERS, AND ANY USE EXCEPT THAT FOR WHICH IT IS LOANED IS PROHIBITED.</small>		<small>DK-EDEC VDS-EDEC</small> 15JUL2015 39014	<small>DRW SIZE</small> D	<small>FIRST SN</small> 39014	
 THIRD ANGLE PROJECTION		TITLE 4P8.2-1800 KATO GENERATOR		DRAWING NUMBER   SHT 2 OF 3 106-60306-42	





52	2	PMG CAPACITOR ASSY	868-51589-91
51	1	LEAD SUPPORT	153-00578-51
50	1	LEAD SEP BOX	034-00037-00
49	1	TERMINAL BOX	034-90754-00
48	3	LEAD SUPPORT MOUNTING BRACKET	150-60170-05
47	1	TERMINAL ASSEMBLY	148-04302-24
46	4	CURRENT TRANSFORMER (DCT, CCCT, ITI 780, 2000:5)	858-52576-80
45	2	CT MOUNTING ASSEMBLY	153-00577-74
44	1	CT MOUNTING ASSEMBLY	153-00577-77
43	2	LEAD SEP BOX	034-00035-00
42	1	LEAD SUPPORT BRKT	150-91000-01
41	1	LEAD SUPPORT	150-90994-29
ITEM	QTY	DESCRIPTION	PART NUMBER
BILL OF MATERIAL			

ECO 99975	SEE SHEET 1 OF 3;	DK-EDEC MP-EDEC 25AUG2015	<b>Kato Engineering</b> 2075 Howard Drive West North Mankato, MN 56003 DRAWING NUMBER   SHT 3 OF 3 106-60306-42
<small>THE INFORMATION HEREON IS THE PROPERTY OF KATO ENGINEERING. WITHOUT WRITTEN PERMISSION, ANY COPYING, TRANSMITTAL TO OTHERS, AND ANY USE EXCEPT THAT FOR WHICH IT IS LOANED IS PROHIBITED.</small>		SCALE 0.100 REV B DK-EDEC VDS-EDEC 15JUL2015 39014	
INCHES THIRD ANGLE PROJECTION		MATL: TITLE 4P8.2-1800 KATO GENERATOR	