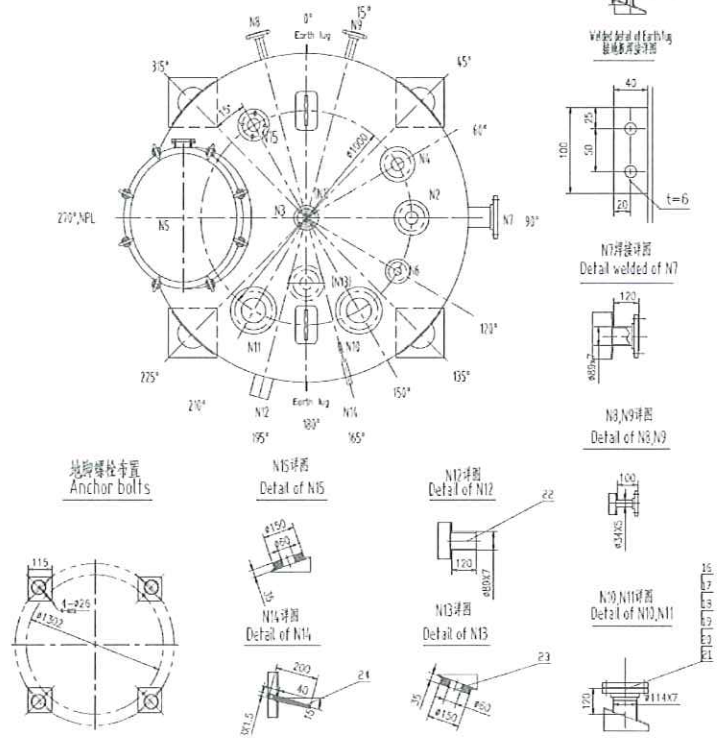
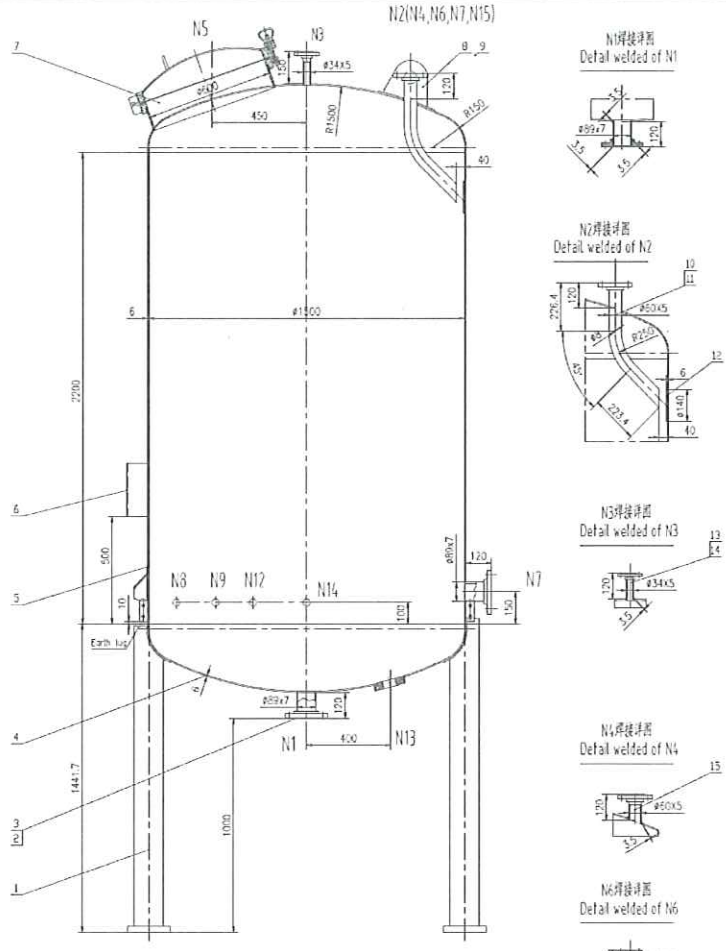


# 108959

Tank Drawing



TECHNICAL SPECIFICATION & DATA			
CODE	NAME	SECTION	NO
ASME B31.3	Process	ASME B31.3	100
ASME B31.3	Design Pressure	ASME B31.3	100
ASME B31.3	Design Temperature	ASME B31.3	121
ASME B31.3	Hydraulic Test Pressure	ASME B31.3	15-45
ASME B31.3	Material Name	ASME B31.3	A Water
ASME B31.3	Welding Process	ASME B31.3	SAW
ASME B31.3	Welding Material	ASME B31.3	SAW
ASME B31.3	Welding Position	ASME B31.3	SAW
ASME B31.3	Welding Thickness	ASME B31.3	SAW
ASME B31.3	Welding Diameter	ASME B31.3	SAW
ASME B31.3	Welding Length	ASME B31.3	SAW
ASME B31.3	Welding Area	ASME B31.3	SAW
ASME B31.3	Welding Weight	ASME B31.3	SAW
ASME B31.3	Welding Cost	ASME B31.3	SAW
ASME B31.3	Welding Time	ASME B31.3	SAW
ASME B31.3	Welding Quality	ASME B31.3	SAW
ASME B31.3	Welding Safety	ASME B31.3	SAW
ASME B31.3	Welding Environment	ASME B31.3	SAW
ASME B31.3	Welding Personnel	ASME B31.3	SAW
ASME B31.3	Welding Equipment	ASME B31.3	SAW
ASME B31.3	Welding Consumables	ASME B31.3	SAW
ASME B31.3	Welding Inspection	ASME B31.3	SAW
ASME B31.3	Welding Record	ASME B31.3	SAW
ASME B31.3	Welding Approval	ASME B31.3	SAW
ASME B31.3	Welding Sign-off	ASME B31.3	SAW

- Class 50 Pressure rating of flanges 50psi
- Vessel interior parts Mill finish Welds must be ground smooth. welds in drainage area must be flush to prevent liquid hold up.
- Main components water soluble salts and sugars, insoluble cellulosic material (N1-N15) separated with 1/2" Dia. and 1/4" Dia. particles size of 200 mesh Particulate filter.
- Spray nozzle and meter valve by customer
- Before painting must sand blast.
- Surface finish must be smooth.

ITEM NO	DESCRIPTION	QTY	UNIT	REMARKS
N1	ASME B31.3-2011	1	Flange	
N2	ASME B31.3-2011	1	Flange	
N3	ASME B31.3-2011	1	Flange	
N4	ASME B31.3-2011	1	Flange	
N5	ASME B31.3-2011	1	Flange	
N6	ASME B31.3-2011	1	Flange	
N7	ASME B31.3-2011	1	Flange	
N8	ASME B31.3-2011	1	Flange	
N9	ASME B31.3-2011	1	Flange	
N10	ASME B31.3-2011	1	Flange	
N11	ASME B31.3-2011	1	Flange	
N12	ASME B31.3-2011	1	Flange	
N13	ASME B31.3-2011	1	Flange	
N14	ASME B31.3-2011	1	Flange	
N15	ASME B31.3-2011	1	Flange	



ITEM NO	DESCRIPTION	QTY	UNIT	REMARKS
25	Earth leg	2	3in	
26	ASME B31.3-2011	1	SA-196 G-6	
27	ASME B31.3-2011	2	SA-195	
28	ASME B31.3-2011	1	SA-196 G-6	
29	ASME B31.3-2011	2	SA-195	
30	ASME B31.3-2011	1	SA-196 G-6	
31	ASME B31.3-2011	2	SA-195	
32	ASME B31.3-2011	1	SA-196 G-6	
33	ASME B31.3-2011	2	SA-195	
34	ASME B31.3-2011	1	SA-196 G-6	
35	ASME B31.3-2011	4	SA-195	
36	ASME B31.3-2011	4	SA-195	
37	ASME B31.3-2011	1	SA-196 G-6	
38	ASME B31.3-2011	1	SA-195	
39	ASME B31.3-2011	2	SA-195	
40	ASME B31.3-2011	2	SA-195	
41	ASME B31.3-2011	2	SA-195	
42	ASME B31.3-2011	2	SA-195	
43	ASME B31.3-2011	2	SA-195	
44	ASME B31.3-2011	2	SA-195	
45	ASME B31.3-2011	2	SA-195	
46	ASME B31.3-2011	2	SA-195	
47	ASME B31.3-2011	2	SA-195	
48	ASME B31.3-2011	2	SA-195	
49	ASME B31.3-2011	2	SA-195	
50	ASME B31.3-2011	2	SA-195	

Design Office: Jiangsu Huaiyin Chemical Industry Co., Ltd.  
 Jiangsu Huaiyin Chemical Industry Co., Ltd.  
 Jiangsu Huaiyin Chemical Industry Co., Ltd.