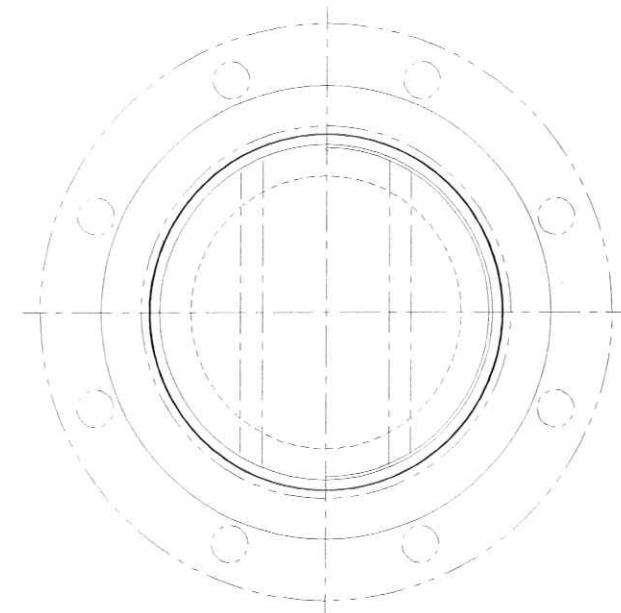


ELEVATION



ORIENTATION OF MODEL 814  
GAS INJECTION SUPPORT PLATE  
BELOW BED #1

**PRELIMINARY: NOT FOR FABRICATION.**  
NOT FOR FABRICATION UNTIL APPROVED FOR FABRICATION DRAWINGS ARE ISSUED BY KOCH-GLITSCH.

**NOTES**

1. TOWER MANHOLE I.D. ACTUAL: 8.33"
2. PARTS SUPPLIED BY KOCH-GLITSCH ARE IDENTIFIED BY MARK # (E.G. A-301) ENCLOSED AS SHOWN [A-301].
3. DIMENSIONS ARE GIVEN IN INCHES.
4. ANY MODIFICATIONS BY CUSTOMER OR ANY THIRD PARTY TO THE EQUIPMENT SHOWN ON THIS DRAWING WITHOUT THE PRIOR WRITTEN APPROVAL OF KOCH-GLITSCH WILL VOID ALL EXPRESSED AND IMPLIED WARRANTIES, INCLUDING ANY IMPLIED WARRANTIES OF MERCHANTABILITY OR FITNESS FOR PURPOSE.
5. THE TOWER ATTACHMENTS HAVE TO BE SECURELY WELDED TO THE VESSEL STRUCTURE AND THE CUSTOMER IS RESPONSIBLE FOR THE SELECTION OF THE METHOD OF THE ATTACHMENT, THE AFS, AND THE EVALUATION OF ALL SHELL APPLICABLE STRESSES.

**REFERENCE DRAWINGS**

DRAWING 979202-0002 FOR MODEL 814 GAS INJECTION SUPPORT PLATE.

MODEL 814  
GAS INJECTION SUPPORT PLATE  
DWG. 979202-0002  
MARK-#

SUPPORT RING  
1/4" THK. X 1" WIDE X 360"  
(BY KOCH-GLITSCH)

0'-8.33"  
TOWER I.D.

**GENERAL NOTES**

KOCH-GLITSCH PROVIDES THIS DRAWING SOLELY FOR BUYER'S CONVENIENCE IN DESIGNING AND FABRICATING PARTS TO MATCH EQUIPMENT FURNISHED BY KOCH-GLITSCH. BUYER IS SOLELY RESPONSIBLE FOR PROVIDING CORROSION AND OTHER ALLOWANCES THAT MAY BE REQUIRED FOR SPECIFIC PROCESS OR MECHANICAL CONSIDERATIONS WHETHER OR NOT SUCH PROCESSES OR CONSIDERATIONS HAVE BEEN COMMUNICATED TO KOCH-GLITSCH.  
ELEVATION AND ORIENTATION VIEWS ARE SCHEMATIC REPRESENTATIONS OF EQUIPMENT AND DO NOT INDICATE THE ACTUAL DESIGN. SEE EQUIPMENT DRAWINGS FOR ACTUAL DESIGN.  
THE CUSTOMER SHOULD TAKE CORRECTIVE ACTION TO ELIMINATE SOLIDS ACCUMULATION IN THE PROCESS. PARALLEL FILTERS ARE RECOMMENDED IN ALL EXTERNAL FEED AND REFLUX LINES TO PROTECT AGAINST DISTRIBUTOR BLOCKAGE. KOCH-GLITSCH SUGGESTS FILTERS CAPABLE OF REMOVING PARTICLES 1/2 THE SIZE OF THE MAXIMUM FEED HOLE SIZE, BUT ASSUMES NO RESPONSIBILITY FOR RECOMMENDING OR DESIGNING FILTERS. SHOULD SOLID ACCUMULATION IMPAIR THE PERFORMANCE OF THE DISTRIBUTOR(S) KOCH-GLITSCH'S PERFORMANCE WARRANTY WILL BECOME VOIDED. REFER TO KOCH-GLITSCH'S TERMS AND CONDITIONS CONCERNING RESPONSIBILITY FOR PROCESS CLEANLINESS.

NO.	DESCRIPTION OF REVISION	CHG BY/DATE	APPROV.

**CUSTOMER'S IDENTIFICATION**

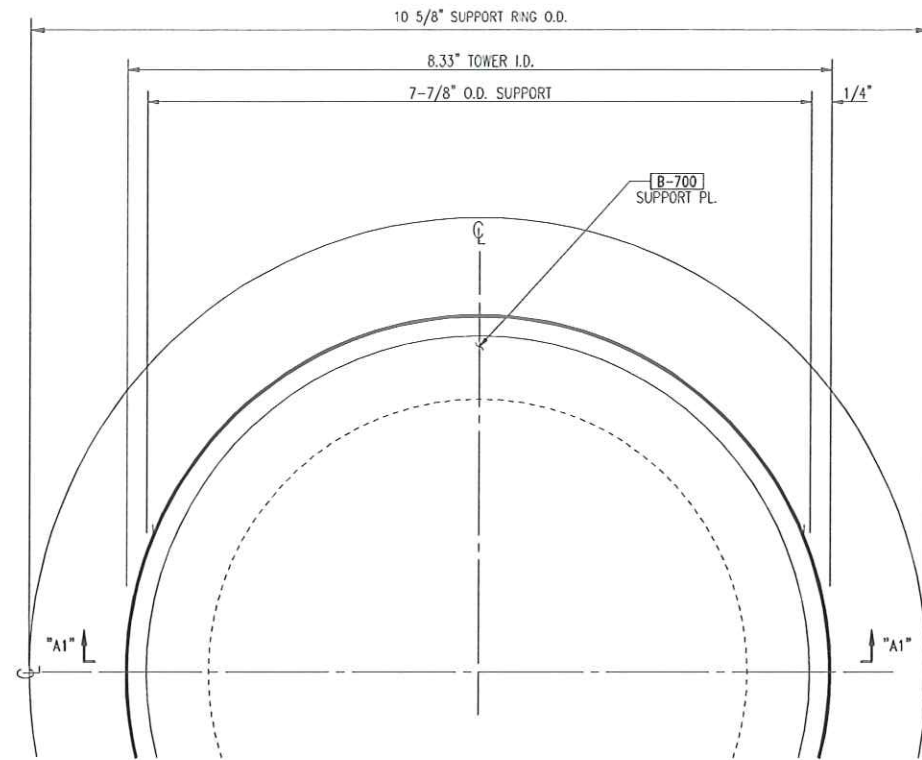
PURCHASED BY: DUPONT DANISCO CELLULOSIC, TASCALA, IL  
P.O. NO.: DDCE11-0050  
USER: DUPONT DANISCO CELLULOSIC ETHL PLANT SITE: VONORE, TN  
SPEC. NO.: KOCH-GLITSCH REFERENCE: -  
TOWER SERVICE: CO2 SCRUBBER PLANT SECTION: -

<b>KOCH-GLITSCH</b>		<b>KOCH-GLITSCH, L.P.</b>	
MASS TRANSFER TECHNOLOGY		USA / WICHITA	
©2007 KOCH-GLITSCH, L.P. ALL RIGHTS RESERVED		MODEL: TOWER	
DRAWN BY: GPD DATE: 09 Jul 09		ELEVATION & ORIENTATIONS	
CHECK BY: SMM DATE: 17 Jul 09		SALES ORDER NO.: 979202	
PROCESS: MTG DATE: 17 Jul 09		PART NO.: ARR-INT	
DRAWING ISSUE		WORK ORDER NO.: 8021142	
APPROVED FOR FABRICATION:		TOWER I.D.	TOWER NO.
BY: -	CERTIFIED FINAL AS FABRICATED:	0'-8.33"	5001-V01
DATE: -	BY: -	DWG. NO.: 979202-D000	
	DATE: -	SHT. 1 OF 1 REV. 0	

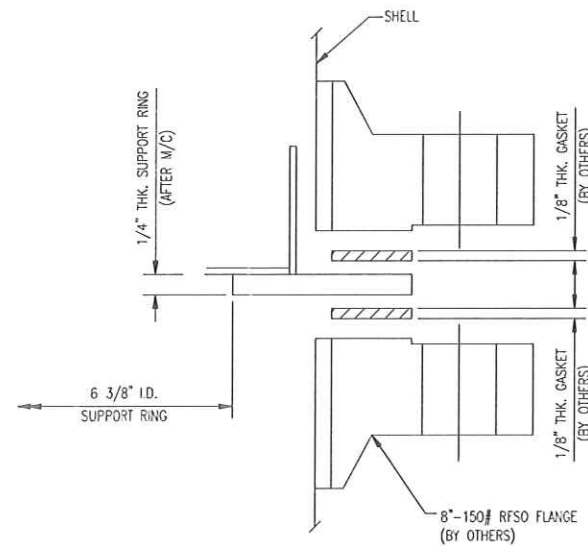
INSTALLATION DRAWING

108917

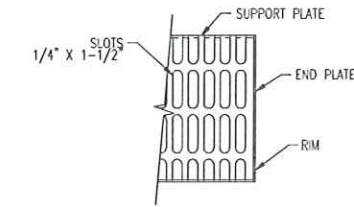
Koch-Glitsch, L.P. and its subsidiaries, including Koch-Glitsch, Inc., are not responsible for the accuracy or completeness of the information contained herein. The information contained herein may not be disclosed or provided to any third party, or used, copied, reproduced, or otherwise transmitted, without the prior written permission of Koch-Glitsch, L.P. or its subsidiaries. This document (including any copies) will be immediately returned to Koch-Glitsch, L.P. if requested.



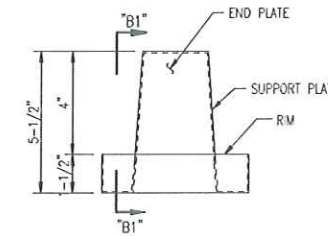
PARTIAL PLAN OF GAS INJECTION PACKING SUPPORT  
ONE REQ'D MK'D "B"



DETAIL "C1"



SECTION "B1-B1"  
( TYPICAL MODULE )



END PLATE DETAIL

**NOTES**

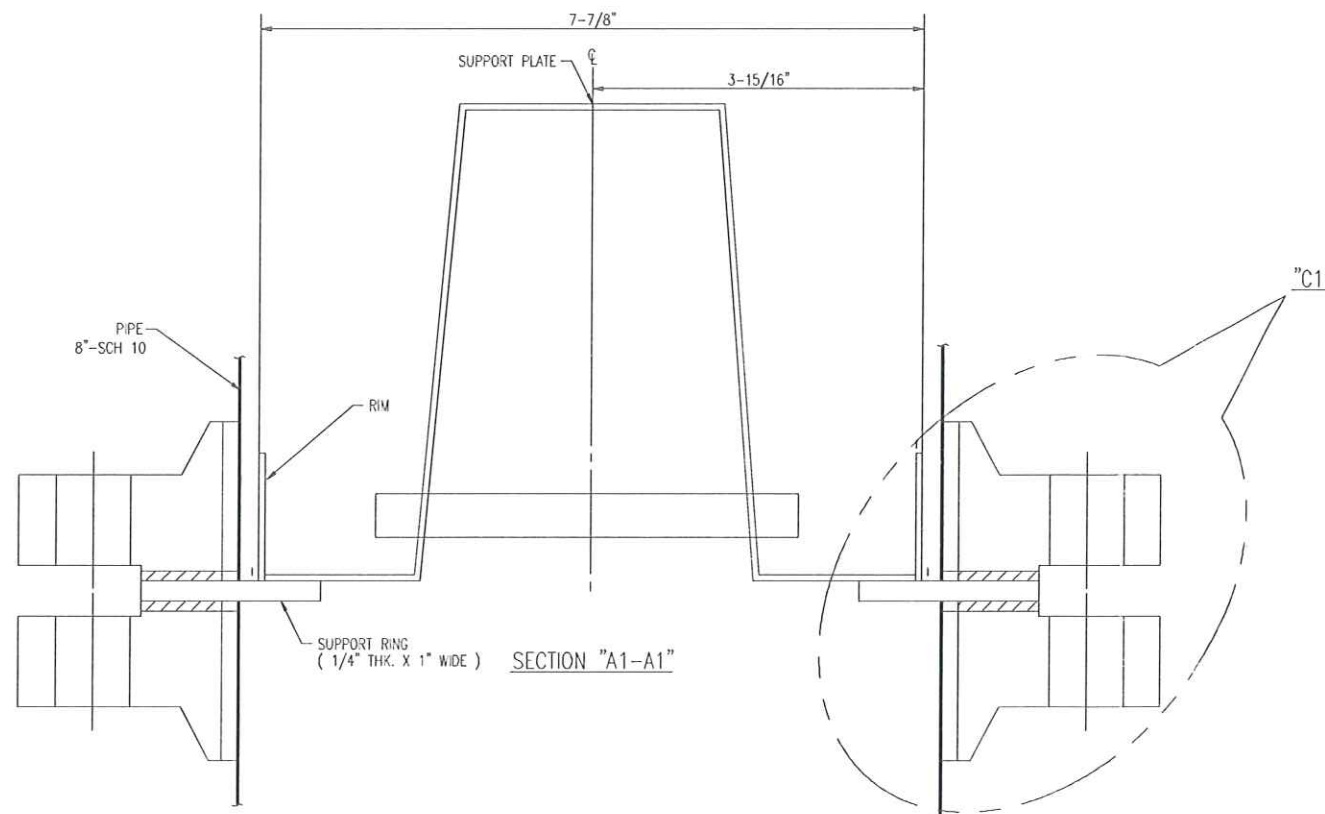
- TOWER MANHOLE I.D. ACTUAL: 8.33"
- PARTS SUPPLIED BY KOCH-GLITSCH ARE IDENTIFIED BY MARK # (E.G. A-301) ENCLOSED AS SHOWN [A-301].
- BOLTING ASSEMBLIES ARE ENCLOSED THUS:  
QUANTITY PER TRAY: ASSEMBLY NUMBER  
(101 / 1010R)
- DIMENSIONS ARE GIVEN IN INCHES
- ANY MODIFICATIONS BY CUSTOMER OR ANY THIRD PARTY TO THE EQUIPMENT SHOWN ON THIS DRAWING WITHOUT THE PRIOR WRITTEN APPROVAL OF KOCH-GLITSCH WILL VOID ALL EXPRESSED AND IMPLIED WARRANTIES, INCLUDING ANY IMPLIED WARRANTIES OF MERCHANTABILITY OR FITNESS FOR PURPOSE.
- PACKING SUPPORT IS TO BE SLIGHTLY STITCH WELDED TO SUPPORT RING.

**REFERENCE DRAWINGS**

DRAWING 979202-D000-1 FOR ARRANGEMENT OF INTERNALS

**LIST OF MATERIAL**

DESCRIPTION	TYPE & THICKNESS
SUPPORT PL.	304L - 14 GA.
RM	304L - 14 GA.
END PLATE	304L - 14 GA.
STIFFENER BAR	304L - 14 GA.
BOLTS	304L
NUTS	304L
WASHERS	304L
SUPPORT RING	304L - 3/8" THK(BEFORE M/C)



SECTION "A1-A1"

EQUIPMENT DESCRIPTION			
QUAN	ITEM	DESCRIPTION	REMARKS
1	B	GAS INJECTION PACKING SUPPORT	BELOW BED #1
NO.	DESCRIPTION OF REVISION		CHG BY/DATE

CUSTOMER'S IDENTIFICATION	
PURCHASED BY: DUPONT DANISCO CELLULOSIC, ITASCA, IL	
P.O. NO.: DDCE11-0050	
USER: DUPONT DANISCO CELLULOSIC ETHL PLANT SITE: VONORE, TN	
SPEC. NO: KOCH-GLITSCH REFERENCE: NONE	
TOWER SERVICE: CO2 SCRUBBER PLANT SECTION:	

K. KOCH-GLITSCH		KOCH-GLITSCH, LP	
MASS TRANSFER TECHNOLOGY		WICHITA, KS, USA	
© 2009 KOCH-GLITSCH, LP. ALL RIGHTS RESERVED.	MODEL: 814	GAS INJECTION SUPPORT PLATE	
DRAWN BY: SMM DATE: 09 Jul 09	CHECKED BY: JBW DATE: 16 Jul 09	SALES ORDER NO.: 979202	PART NO.: 97920202
PROCESS: MTG DATE: 16 Jul 09	WORK ORDER NO.: 8071141	TOWER I.D. 0'-8.33"	TOWER NO. 5001-V01
DRAWING ISSUE	APPROVED FOR FABRICATION:	CERTIFIED FINAL AS FABRICATED	DWG. NO.: 979202-D002
BY:	DATE:	BY:	DATE:
SHT. 1 OF 1		REV.	

KOCH-GLITSCH ENGINEERING AND PROCESSING MAY BE CONTACTED BY PHONE, FAX OR E-MAIL AT THE FOLLOWING ADDRESSES: THE COMPANY IS NOT RESPONSIBLE FOR ANY DAMAGE TO PROPERTY OR PERSONS OR FOR ANY LOSS OF PROFITS OR BUSINESS OPERATIONS CAUSED BY THE USE OF THIS DRAWING OR ANY INFORMATION CONTAINED HEREIN. THE COMPANY AND ITS AFFILIATED COMPANIES SHALL NOT BE LIABLE FOR ANY DAMAGE TO PROPERTY OR PERSONS OR FOR ANY LOSS OF PROFITS OR BUSINESS OPERATIONS CAUSED BY THE USE OF THIS DRAWING OR ANY INFORMATION CONTAINED HEREIN. THE COMPANY AND ITS AFFILIATED COMPANIES SHALL NOT BE LIABLE FOR ANY DAMAGE TO PROPERTY OR PERSONS OR FOR ANY LOSS OF PROFITS OR BUSINESS OPERATIONS CAUSED BY THE USE OF THIS DRAWING OR ANY INFORMATION CONTAINED HEREIN.

**INSTALLATION DRAWING**

108917