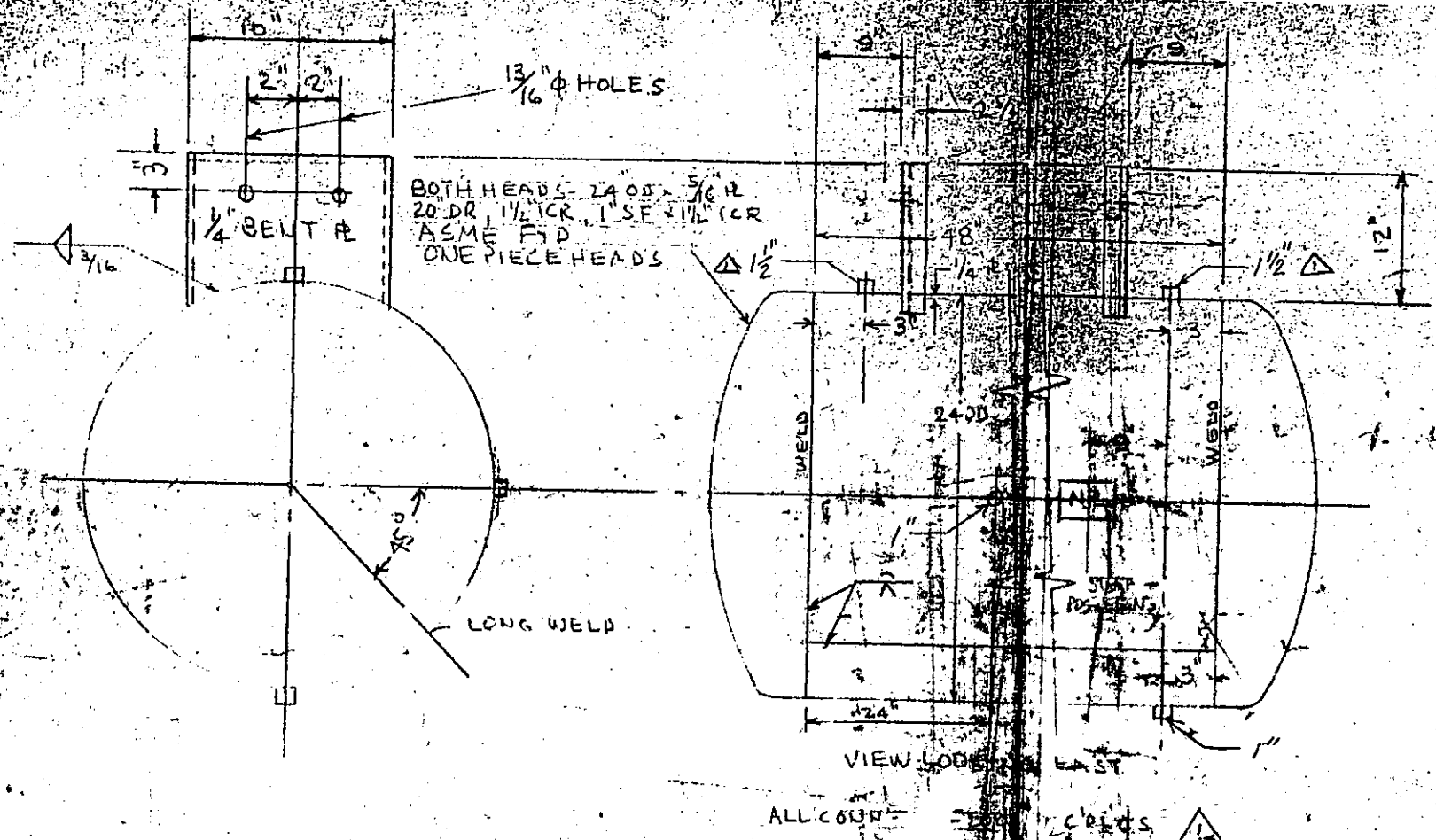


HOFFMANN LAZOCHE INC. PO. BOX 6711
 PROJECT G6
 ARTHUR G. MCKEE & CO. - CONTRACTOR
 CONT. 3726 - PO. MCK-3726-22
 Pos. No. E4 No.
 B-3-6995 XTB-376
 B-3-6996 XTB-377
 B-3-6997 XTB-378
 MCKEE.DWG 6995-1
 6996-1
 6997-1



3 UNITS REQ'D
 BUTT WELDED THRUOUT
 MATERIAL A240-304
 ASME CODE STAMP 200 PSIG 75°; H-3020-300PSI
 MAX ALLOW WORK PRES - 236 PSIG
 FINISH CLEAN PER SSPG-SP2 CLOSE OPENING
 REMOVE SPATTER
 WT. EMPTY - 400#; FLUIDED - 1300#

APPROVED
 Checked for General Design & Controlling Dimensions Only. This Approval does not relieve the Vendor of Responsibility for Correctness of Design, Details and Dimensions.
 VENDOR TO MAKE CORRECTIONS AS NOTED AND ISSUE PRINTS FOR OUR (Distribution) (For the Approver) (Initials) (PROCEED WITH) FABRICATION
 ARTHUR G. MCKEE & CO. CLEVELAND OFFICE
 By: *V. E. Jacques* Date: 6-29-71

△ TOP INLET & OUTLET CONNECTIONS
 CHANGE FROM 1" TO 1/2" COLLING
 10-80 BULK LINE

ENIVEL ENGINEERING CORPORATION
 CLIFTON NEW JERSEY
 XTB-377
 COMPRESSED AIR HEAD TANKS
 ROSEN 70274

SCALE	BY	DATE	APP'D	DATE	ORDER	DRAWING NO.
	EM	10/30	A. J. JONES	10/30	1000	1000