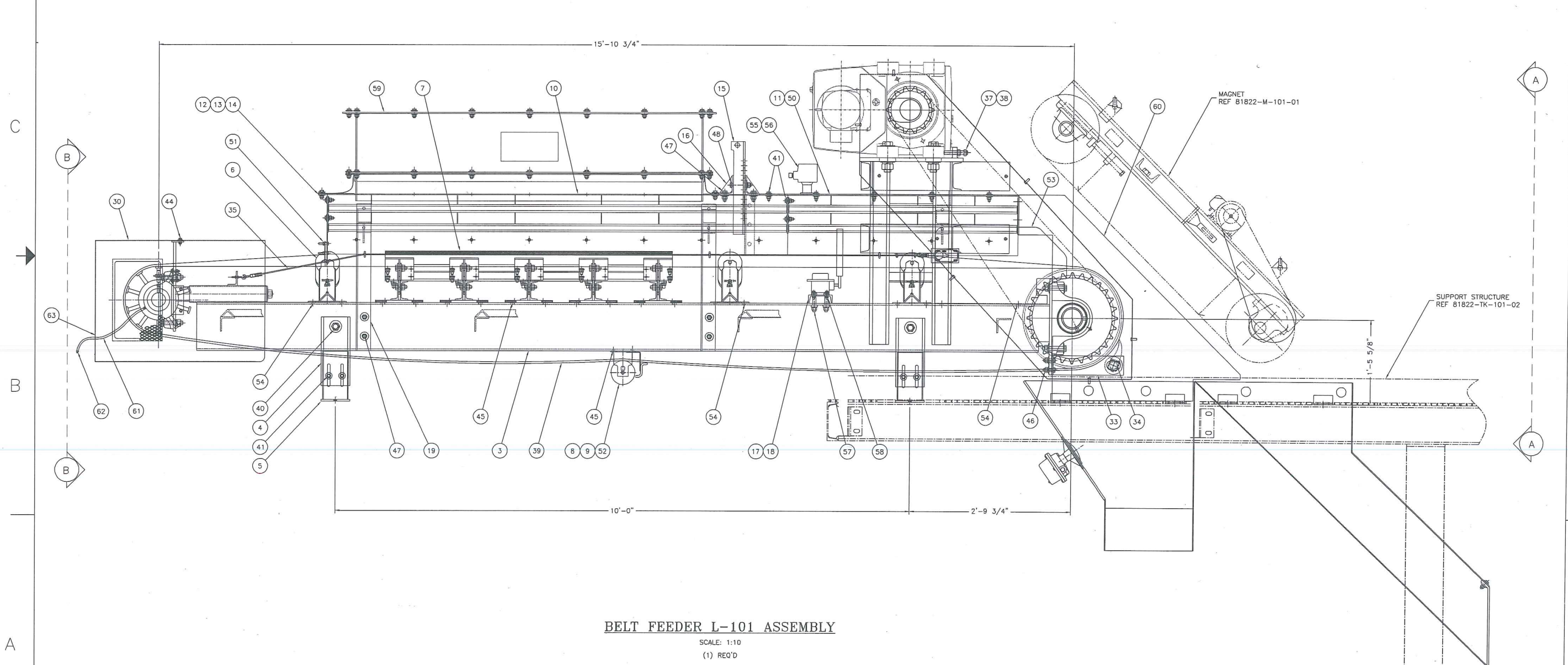


ITEM		QTY	DESCRIPTION	DRAWING	WEIGHT	ITEM		QTY	DESCRIPTION	DRAWING	WEIGHT	ITEM		QTY	DESCRIPTION	DRAWING	WEIGHT					
1	1	1	DRIVE PULLEY ASSEMBLY	81822-L-101-02-1	494	20	1	1	NORD GEAR MOTOR SKB382/32VX-100L/4 891.21:1 RATIO 1.8 RPM 3 HP SOLID SHAFT M5 MOUNTING	E70586	922	37	2	JACK BOLT WELDMENT	81822-L-101-18	4	56	4	1/2"-13NC X 1" HHCS W/ FW, LW & HN	-	-	
2	1	1	TAIL PULLEY ASSEMBLY	81822-L-101-02-2	310	38	2	2	3/4"-10NC HN	S-30.10.6	2	57	4	5/8"-11NC X 3-1/2" HHCS W/ FW, BW, LW & HN	-	-	2	57	4	5/8"-11NC X 3-1/2" HHCS W/ FW, BW, LW & HN	-	-
3	1	1	FRAME WELDMENT	81822-L-101-03	963	21	1	1	SPROCKET RC160814 2" PITCH 14 TOOTH 4.25" BORE 1" KEYWAY	E70587	32	39	1	24" WIDE 3-PLY 330 FPM BELTING X 42" W/VULCANIZED SPLICE	S-84.19	210	58	6	3/8"-16NC X 1-1/2" HHCS W/ FW, LW & HN	-	-	
4	4	4	LEG DETAIL	81822-L-101-08	40	22	1	1	SPROCKET RC160828 2" PITCH 28 TOOTH 3.94" BORE 1" KEYWAY	E70588	98	40	4	1"-8NC X 2" HHCS W/ FW, LW & HN	-	2	59	1	DISCHARGE TRANSITION ASSEMBLY	81822-L-101-32	349	
5	4	4	STANDARD CHANNEL FOOT	INN-10001-G	26	23	1	1	1.00 SQUARE KEYSTOCK X 3.25" LONG	S11-100100 FL	1	41	54	1/2"-13NC X 1-1/2" HHCS W/ (2) FW, LW & HN	-	1	60	1	DISCHARGE CHUTE ASSEMBLY	81822-L-101-35	639	
6	3	24"	#5" CEMA B 20" TROUGHING IDLER	225-24-A0-0120	153	24	1	1	#160 2" PITCH ROLLER CHAIN 76 PITCHES LONG (1) CONNECTING LINK & (1) OFFSET LINK	E70589	86	42	4	3/4"-10NC X 4" HHCS W/ (2) FW, LW & HN	-	2	61	2	18" NEOPRENE GREASE HOSE W/O COUPLER #204K42	2044K42	-	
7	1	24"	20" 5" LONG SFD IMPACT BED	BA-842-035-501	498	25	1	1	PROXIMITY SWITCH BRACKET	81822-L-101-20	2	44	6	3/8"-16NC X 1" HHCS W/ FW & LW	-	1	62	2	1/8" NPT FEMALE STL GREASE FITTING #109SK15	109SK15	-	
8	1	24"	#5" CEMA B RETURN ROLLER	225-24-91-0120	26	26	2	2	3/8"-16NC X 1 1/2" LG W/FW,LW & HN	-	1	45	20	5/8"-11NC X 2-1/2" HHCS W/ FW, BW, LW & HN	-	10	63	2	STD RUBBER GROMMET #9600K49	5-77.17	-	
9	2	4-1/2"	DROP BRACKET - CEMA B	MD-IDL19-57-00	2	27	1	1	PROXIMITY SWITCH 872C-N12NP18-E2 - XS10107	872C-N12NP18-E2	1	46	4	5/8"-11NC X 2" HHCS W/ FW, BW, LW & HN	-	1	TOTAL WEIGHT 5964					
10	2	8"	SKIRTBOARD ASSEMBLY - ASTM A36 CARBON STEEL	81822-L-101-26	224	28	1	1	SHAFT COLLAR 2 15/16" ID X 4" OD	6432K48	2	47	12	5/8"-11NC X 1-3/4" HHCS W/ (2) FW, LW & HN	-	1						
11	2	4"	SKIRTBOARD ASSEMBLY - ASTM A36 CARBON STEEL	81822-L-101-29	120	29	1	1	1/2"-13NC X 1.50" SQUARE HEAD SET SCREW	S-30.8.12	-	48	2	5/8"-11NC X 4" HHCS W/ FW, LW & HN	-	1						
12	1	1	SKIRTBOARD BACK PLATE	81822-L-101-10	13	30	1	1	TAIL PULLEY GUARD	81822-L-101-30	100	49	4	1-1/4"-7NC X 5-1/2" HHCS W/ (2) FW, LW & HN	-	4						
13	1	1	REAR SKIRTBOARD RUBBER CLAMP	81822-L-101-16	3	31	1	1	REDUCER GUARD WELDMENT	81822-L-101-14	56	50	1	SKIRTBOARD COVER PLATE	81822-L-101-19	43						
14	1	3/8" X 6"	SKIRTBOARD RUBBER X 18"	S-80.15.8	2	32	1	1	REDUCER GUARD COVER WELDMENT	81822-L-101-15	46	51	3	3/8"-16NC HN W/ FW & LW	-	-						
15	1	1	ADJUSTABLE SLIDE GATE - AR400 STEEL	81822-L-101-24	46	33	2	2	BELT SCRAPER BRACKETS	81822-L-101-04	12	52	1	RETURN ROLL GUARD	GRR-24-A05-408	4						
16	2	1	SLIDE GATE BRACKET	81822-L-101-31	22	34	4	4	24" BELT SCRAPER	MCHMND0024000240TA	20	53	1	HEAD HIP GUARD	81822-L-101-17	33						
17	1	1	ALIGNMENT SWITCH BRACKET	81822-L-101-12	14	35	1	1	SAFETY PULL STOP ASSEMBLY - HS10108	81822-L-101-05	10	54	14	1/2"-13NC X 2" HHCS W/ FW, BW, LW & HN	-	3						
18	2	1	BELT ALIGNMENT SWITCH ZSH/ZSHH10109A & ZSH/ZSHH10109B	TA-2	22	36	1	1	SAFETY LABEL ASSEMBLY	81822-L-101-11	-	55	1	RAMSEY DTR 131Z FLOW/NO FLOW DETECTOR - FSL10110	DTR131Z	-						
19	4	1	SKIRTBOARD SUPPORTS	81822-L-101-09	80																	

NOTES:  
 1. ITEMS MARKED \* SHIPPED LOOSE.  
 2. ALL SWITCHES AND MOTORS TO BE FIELD WIRED - NO PRE-WIRING IS INCLUDED



**BELT FEEDER L-101 ASSEMBLY**

SCALE: 1:10  
 (1) REO'D

SPEED FORMULA =  $\frac{1750}{891.21} \times \frac{14}{28} \times \frac{20.75 \times \pi}{12} = 5.3$  FPM @ 60HZ

ZONE	REV	ECN	DESCRIPTION	DATE	BY
-	D	-	ADDED GREASE LINES TO DRAWING	1-10-13	JUF
-	C	-	ADDED CHUTES TO DRAWING	12-10-12	JUF
-	B	-	CHANGED BELT ALIGNMENT SWITCH	10-24-12	JUF
-	A	-	CHANGED FLOW SENSOR	10-8-2012	AWP



DO NOT SCALE DRAWING		CAD FILE NUMBER	JOB NO.
THIS PRINT IS THE PROPERTY OF INNOVATIVE PROCESSING SOLUTIONS AND IS LOANED TO YOU SUBJECT TO RETURN ON DEMAND, UNLESS OTHERWISE AGREED TO IN WRITING BY INNOVATIVE PROCESSING SOLUTIONS. ITS CONTENTS ARE CONFIDENTIAL AND MUST NOT BE COPIED OR SUBMITTED TO ANY THIRD PARTY FOR USE OR EXAMINATION.		81822-L-101-01 REV D	81822-2
UNLESS OTHERWISE SPECIFIED, DIMENSIONS ARE IN INCHES AND TOLERANCES ARE:			
ANGLES: ± 1°	FRACTIONS: ± 1/16"	DATE	DWG. NO.
SURFACE ROUGHNESS: $\sqrt{R}$	XXX: ± .005	12/10/12	81822-L-101-01
DESIGNED BY	DRAWN BY	CHECKED BY	SHEET
AWP	AWP	-	1 OF 2
			SCALE
			NOTED

8

7

6

5

4

3

2

1

D

C

B

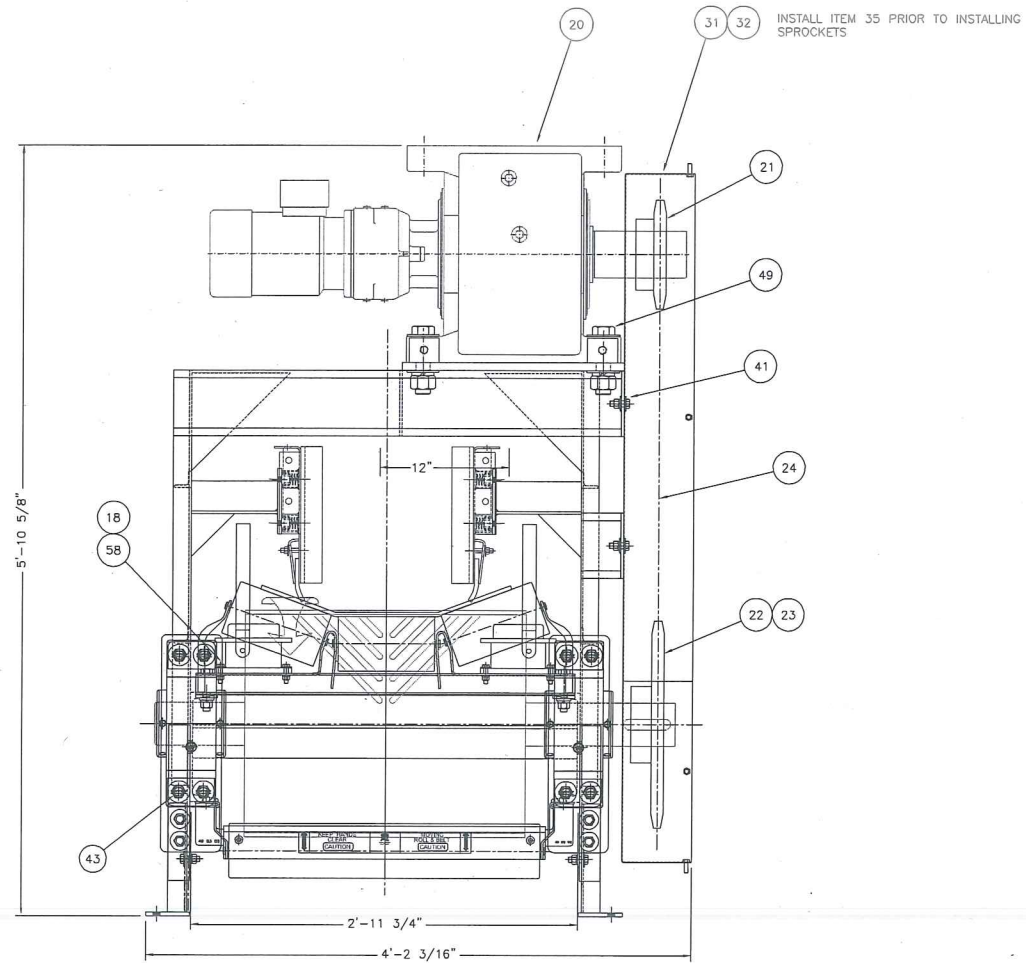
A

D

C

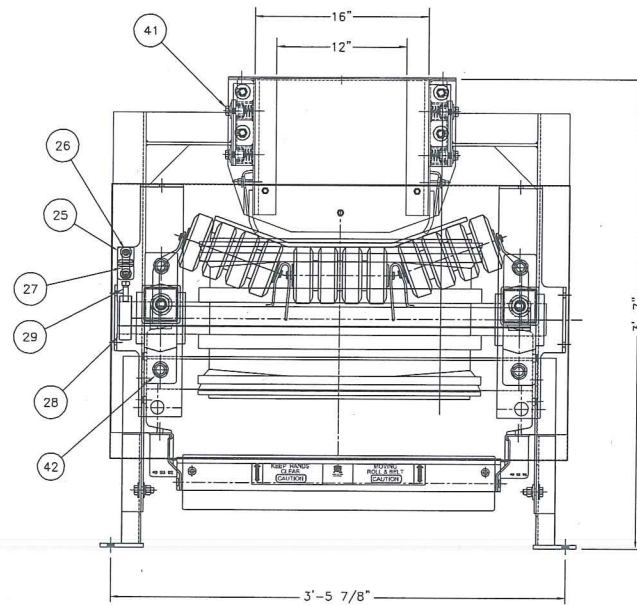
B

A



VIEW A-A

SCALE: 1/8" = 1"



VIEW B-B

SCALE: 1/8" = 1"

TAIL GUARD NOT SHOWN FOR CLARITY

ZONE	REV	ECN	DESCRIPTION	DATE	BY
-	-	-	-	-	-

8

7

6

5

24

4

3

2

1



DO NOT SCALE DRAWING  
 THIS PRINT IS THE PROPERTY OF  
 INNOVATIVE PROCESSING SOLUTIONS AND  
 IS LOANED TO YOU SUBJECT TO RETURN  
 ON DEMAND, UNLESS OTHERWISE ADVISED.  
 TO IN WRITING BY INNOVATIVE PROCESSING  
 SOLUTIONS. ITS CONTENTS ARE  
 CONFIDENTIAL AND MUST NOT BE COPIED  
 OR SUBMITTED TO ANY THIRD PARTY FOR  
 USE OR EXAMINATION.

UNLESS OTHERWISE SPECIFIED, DIMENSIONS  
 ARE IN INCHES AND TOLERANCES ARE:  
 ANGLES : ± 1°  
 FRACTIONS : ± 1/16"  
 X : ± .02  
 XX : ± .01  
 XXX : ± .005

SURFACE ROUGHNESS R50

CAD FILE NUMBER 81822-L-101-01 REV D	JOB NO. 81822-2	
TITLE L-101 BELT FEEDER GENERAL ASSEMBLY FURUKAWA		
DATE 12/10/12	DWG NO. 81822-L-101-01	SCALE NOTED
DESIGNED BY AWP	DRAWN BY AWP	CHECKED BY -
SHEET 2 OF 2		REV D