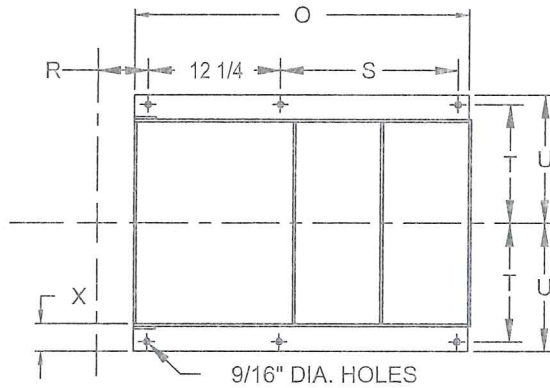
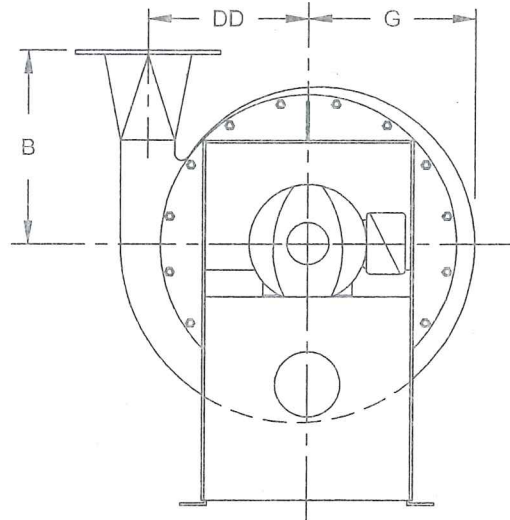
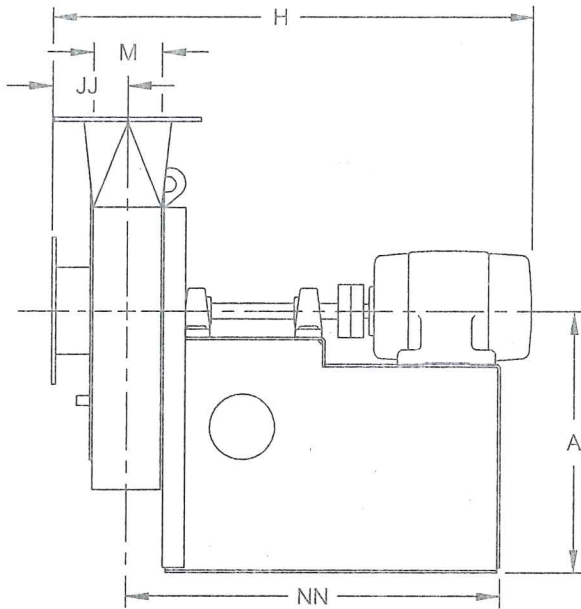


AMERICAN ECO COAL

PURCHASE ORDER: PM25050-M0004-01

K-304



INLET AND OUTLET FLANGES ARE 3/8" THICK MATERIAL.

PRESSURE BLOWERS ARE ROTATABLE IN THE FIELD BY 22 1/2° INCREMENTS.

FURNISHED WITH FLANGED INLET AND OUTLET WHICH FITS ANSI 150 PIPE FLANGES.

MAXIMUM TEMPERATURE :
 200°F (93°C) - ALUMINUM WHEEL
 300°F (149°C) - STEEL WHEEL
 800°F (427°C) - T1/INX80 WHEEL

STATIC LOAD = 852 LBS.
 DYNAMIC-DY = 168 LBS.
 DYNAMIC-DX = 168 LBS.
 DYNAMIC-DZ = 86.4 LBS.
 WITH ALL 24.4" SP AT INLET.

WHEEL WEIGHT = 61.36 LBS.

ITEM	DIMENSIONS	
	in	mm
A	26 5/8	676
B	19	483
DD	17 5/8	448
G	18 1/4	464
H	53 3/8	1356
JJ	7	178
M	5	127
NN	43 1/2	1105
R	3 7/8	98
S	26 1/8	664
T	10 7/8	276
U	11 3/4	298
O	40 5/8	1032
X	2 1/2	64
SHAFT DIA. WHL	1 7/16	37
KEYWAY @ WHL	3/8	-

FLANGED OUTLET	DIMENSIONS	
	in	mm
I.D.	6	152
B.C.	9 1/2	241
O.D.	11	279
NO. HOLES	8	-
DIA. HOLES	7/8	22

FLANGED INLET	DIMENSIONS	
	in	mm
I.D.	8	203
B.C.	11 3/4	298
O.D.	13 1/2	343
NO. HOLES	8	-
DIA. HOLES	7/8	22

ITEM	DIMENSIONS	
	in	mm
Size	8S	-
BORE@FAN	1 7/16	37
KEY @ FAN	3/8 x 3/16	-
BORE@MOTOR	1 5/8	41
KEY @ MOTOR	3/8 x 3/16	-

TOLERANCE: ±1/8" (±3mm)



THE NEW YORK BLOWER COMPANY
 7680 Quincy Street
 Willowbrook, IL 60527-5530

Visit us on the Web:
<http://www.nyb.com>
 Phone: (800) 208-7918
 Email: nyb@nyb.com

Pressure Blower A8
 SIZE: 2606S CW UB

Date 01-11-13 Certified DCB

Drawing No. H02684-010-2A Rev. _____

B12V

Flange is FF