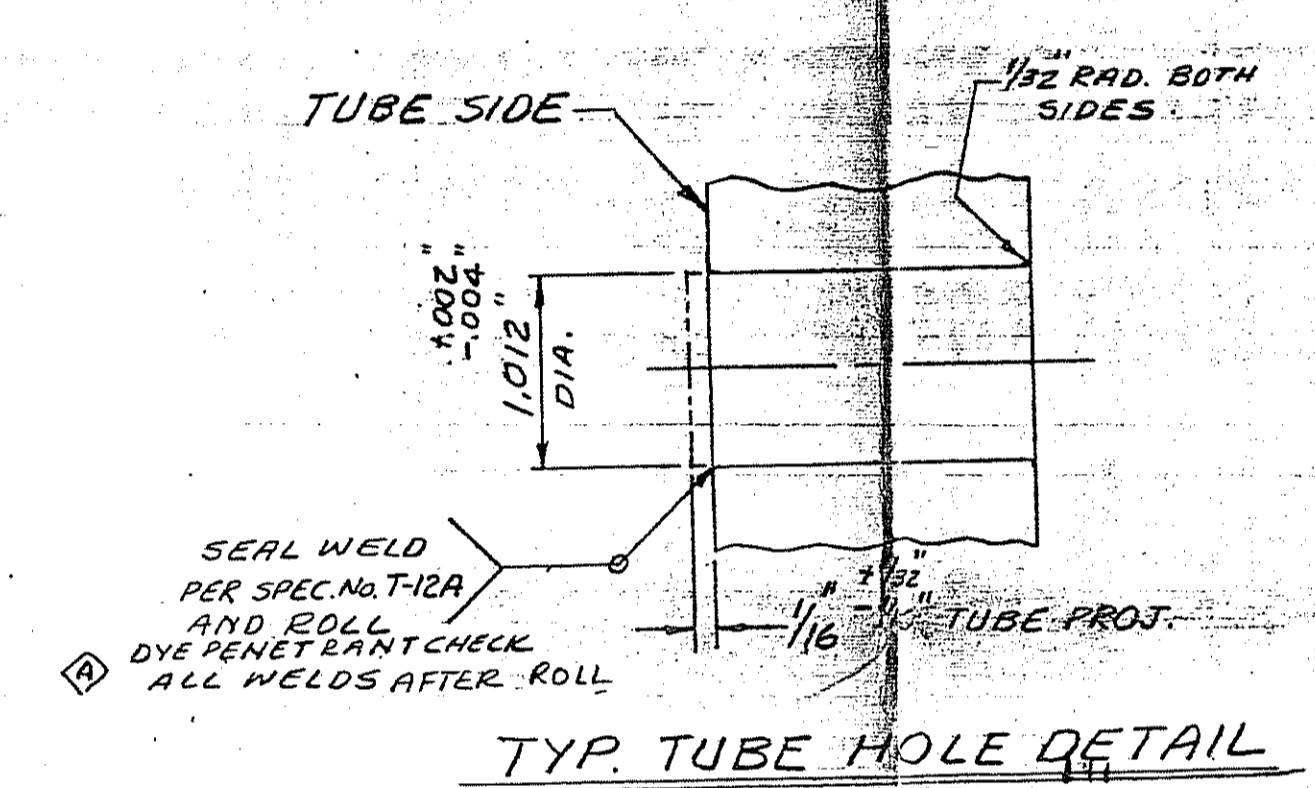
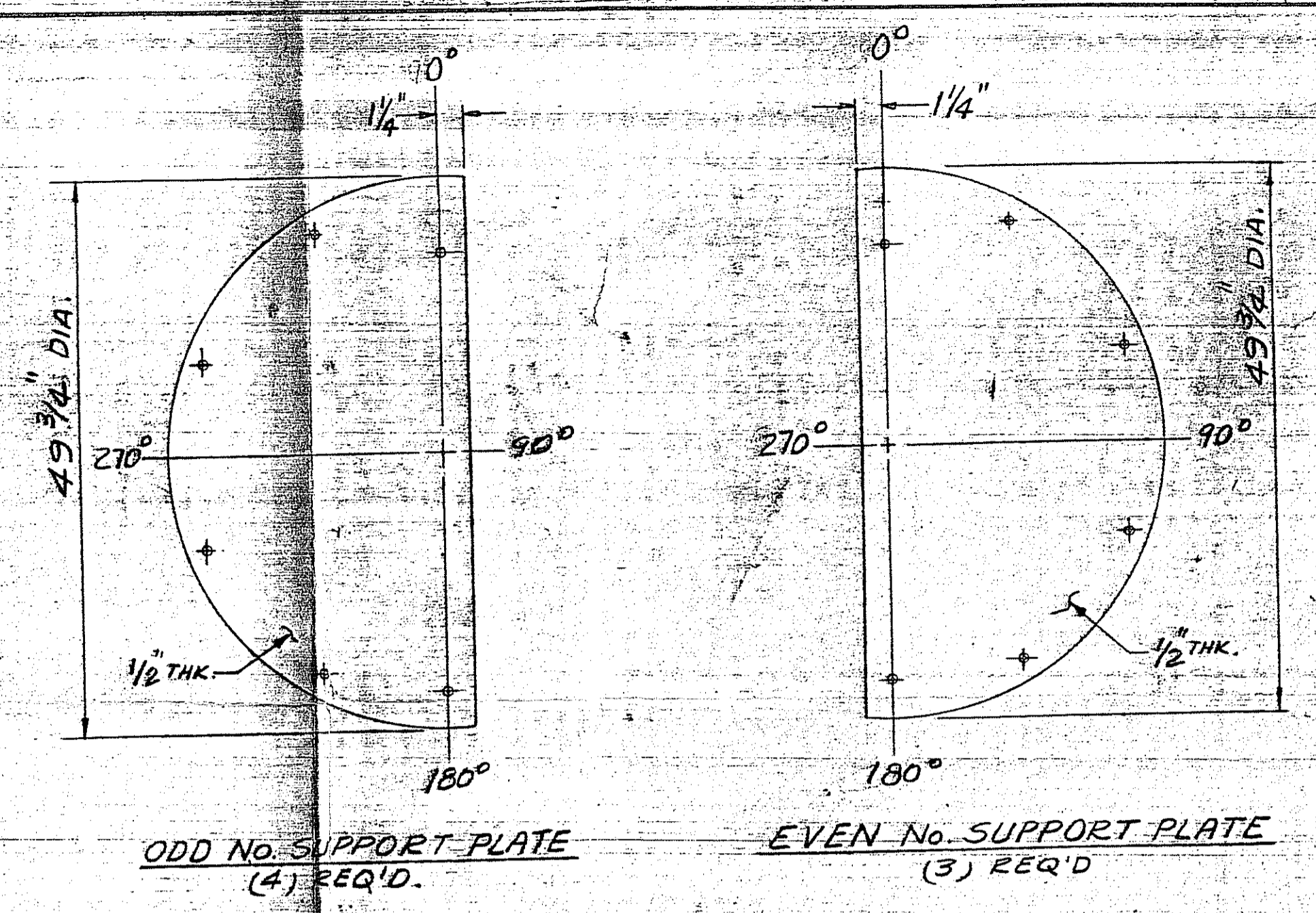
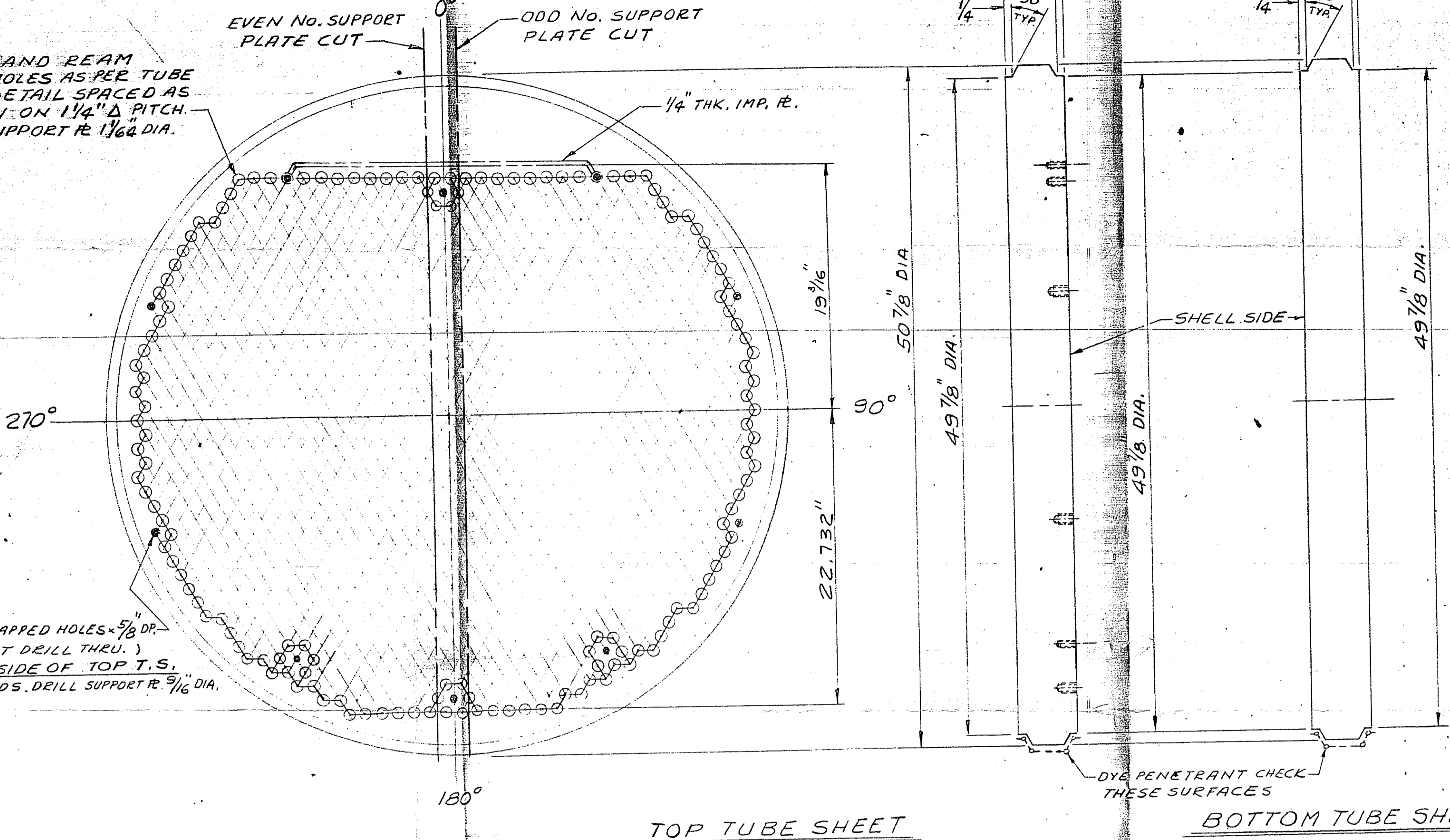


SHOP NOTE:  
O.T.L. = 49 1/2" DIA. REF.

DRILL AND REAM  
(127) HOLES AS PER TUBE  
HOLE DETAIL SPACED AS  
SHOWN ON 1/4" Δ PITCH.  
DRILL SUPPORT R. 1 1/16" DIA.



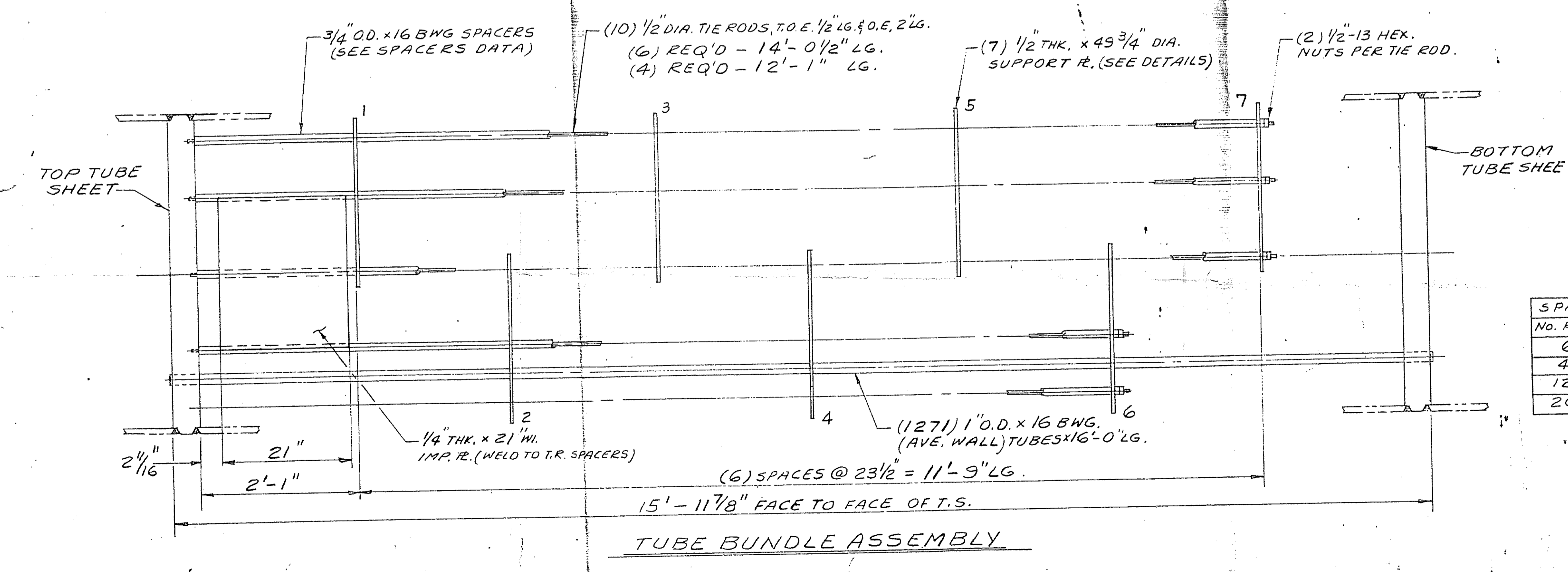
(10) 1/2\"-13 TAPPED HOLES x 5/8\" DP.  
(DO NOT DRILL THRU.)  
IN SHELL SIDE OF TOP T.S.  
FOR TIE RODS. DRILL SUPPORT R. 5/16\" DIA.

DYE PENETRANT CHECK  
THESE SURFACES

Copies sent to Smith 8-31-72

B.P.F. NO.	42317	DATE	1/18/72
SHEET	4	APPARATUS NO.	E-4205-2A
PROJECT & ACCOUNT	26035 2027		
ORDER NO.	336-026-35043		
PLANT APPROVED	H. G. Schuber		

REF. DWG.  
F-6900-2 ASSEMBLY IT. No. E-4205-2A  
F-6900-3 ASSEMBLY IT. No. E-4205-2B  
CUST. P.O. No. 026-35043  
CUST. ITEM No. E-4205-2A & 2B



No. REQ'D	LENGTH
6	2'-1"
4	2'-0 1/2"
12	1'-11"
20	3'-10 1/2"

TWO (2) UNITS REQ'D

A		1-11-72		DB		ADDED DYE PENETRANT CHECK FOR TUBES TO TUBE SHEET WELDS		HERCULES INC., HANOVER PROJECT WILMINGTON, DELAWARE	
ISSUE	DATE	BY	CHKD.	REVISION	DATE	BY	CHKD.	MADE	CHECKED
								DB	A.J.T.
CONTRACT		1685		REVISIONS		1-26-72		2-4-72	
DRAWING NO.		F-6900-4A		SCALE		2-B-72		REV.	

# 104206