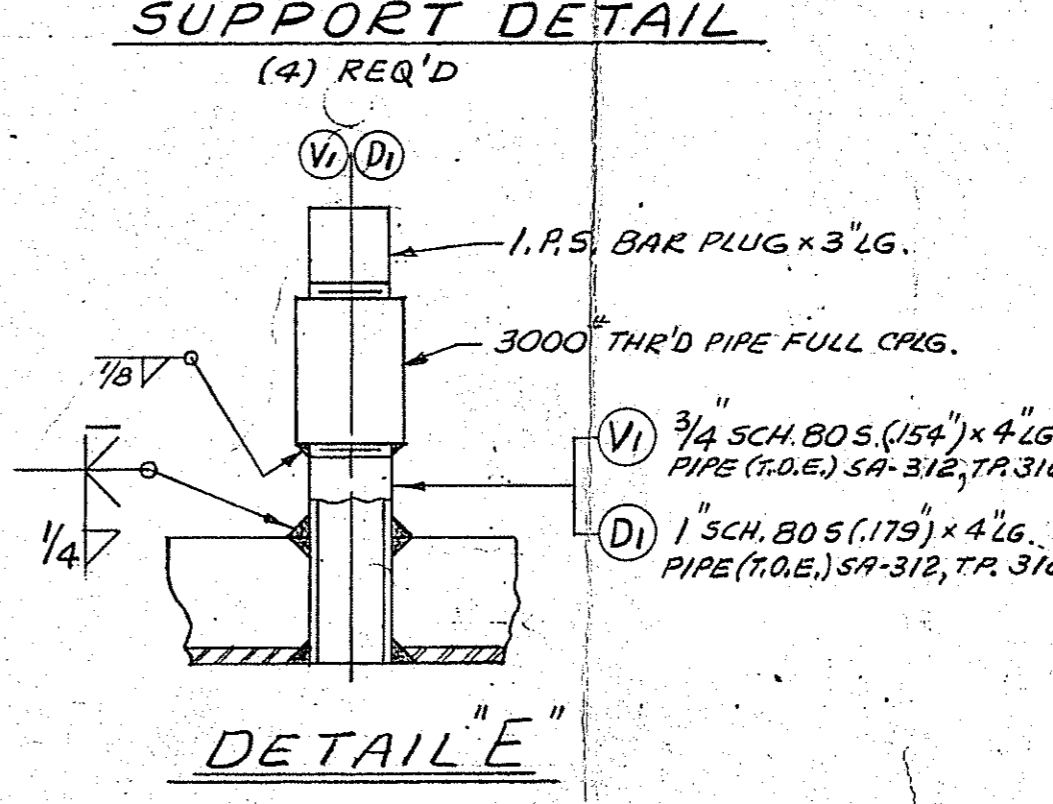
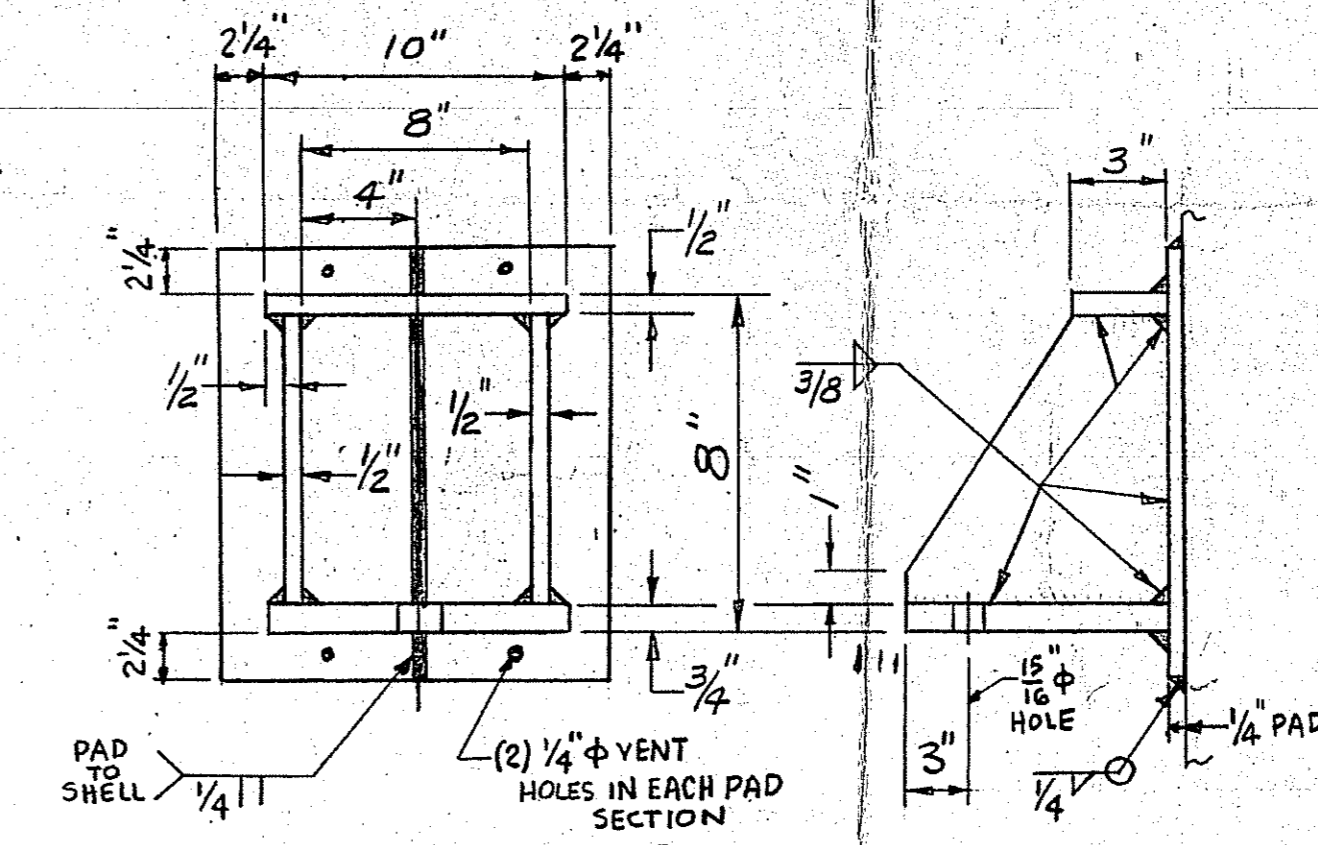
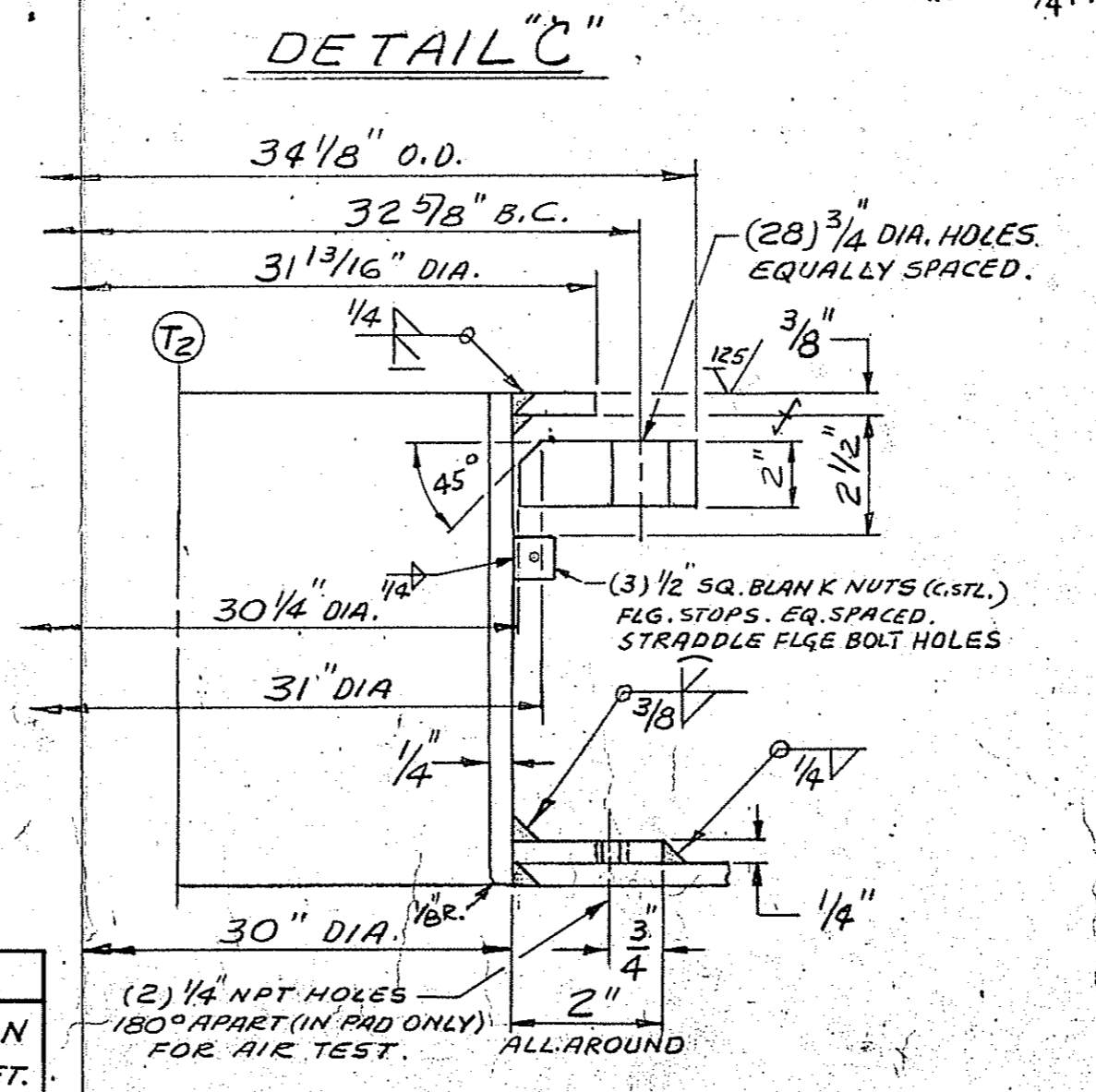
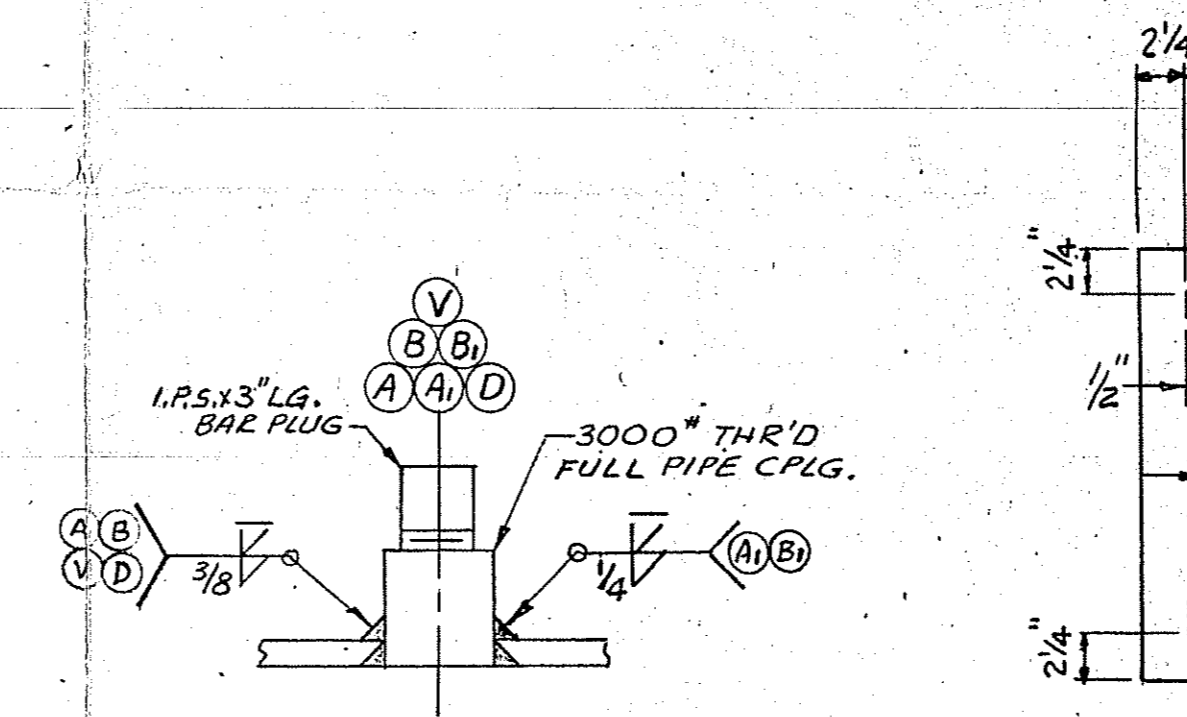
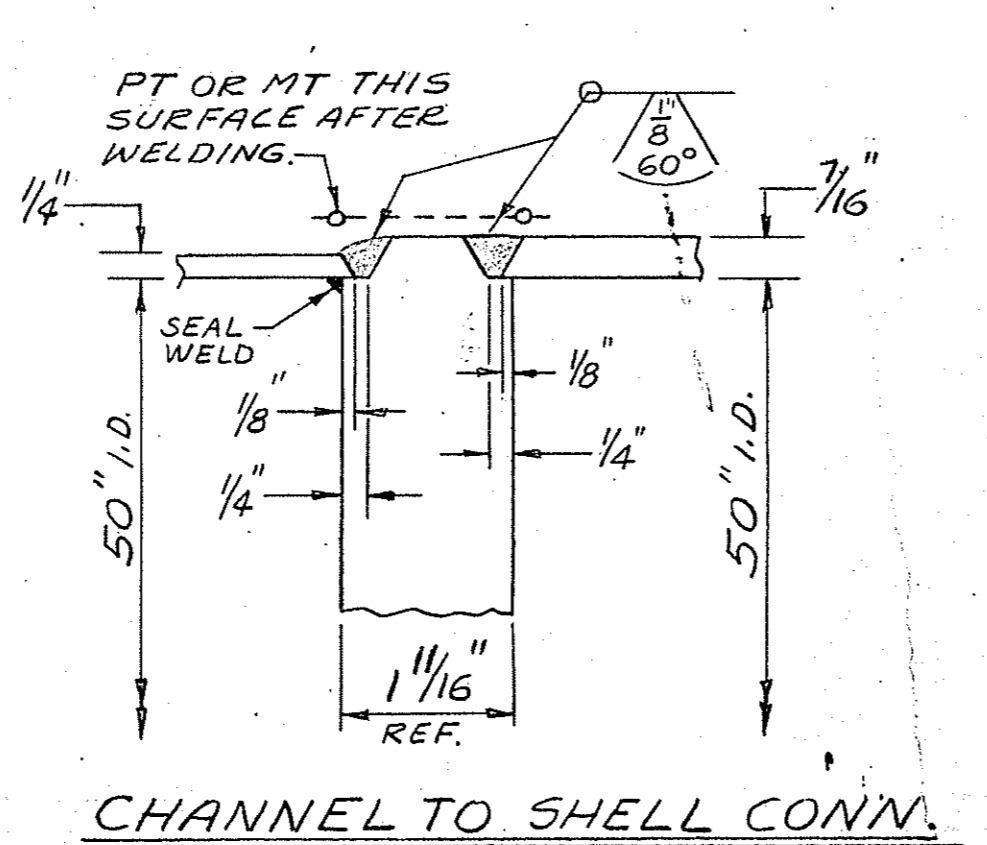


MARK	A	B
S1	1/2"	3/8"
S2	7/16"	5/16"



DESIGN DATA		
	SHELL SIDE	TUBE SIDE
DESIGN PRESS.	75 PSIG	75 PSIG
HYDRO TEST PRESS.	115 PSIG	120 PSIG
DESIGN TEMP.	350° F	350° F
COR. ALLOW	1/8"	0"
POST WELD H.T.	NONE	NONE
RADIOGRAPH	SPOT PER UW-52	SPOT PER UW-52
NO. OF PASSES	ONE (1)	ONE (1)

MATERIALS		
SHELL	SA-515 GR.70 (68)	SA-240 TP 31G
COVER	—	SA-515 GR.70 (68)
SHELL FLANGES	—	SA-240 TP 31G LINER
NOZZLE FLANGES	SA-181 GR. I	SA-515 GR.70 (68)
NOZZLE NECKS	SA-53 GR. 8 (54)	SA-240 TP 31G
GASKETS (MAIN FLGS.)	—	FLUOROPOLYMER
PRESS. BOLTING	—	SA-193 B7/SA-194 2H
INTERNAL BOLTING	—	—
NOZZLE REIN. PAD	—	SA-240 TP 31G
COUPLINGS	SA-181 GR. I	SA-182 F-31G
PLUGS	CARBON STEEL	S.S. TP 31G
TUBES	SA-249 TP 31G (AVE. WALL) WELDED	
TUBESHEETS	SA-240 TP 31G	
BAFFLE/TUBE SUPPORT PL.	CARBON STEEL	
IMPINGEMENT PL.	CARBON STEEL	
TIE RODS/SPACERS	CARBON STEEL	
SEALING STRIPS	—	
FLTG. HD. COVER	—	
FLTG. HD. RING FLANGE	—	
FLTG. HD. GASKET	—	
FLTG. HD. BOLTING	—	
SPLIT/BACKING RINGS	—	
PASS PARTITIONS	—	
LIFTING LUGS	CARBON STEEL	
SHELL SUPPORTS	CARBON STEEL	
SHELL SUPPT. REIN. PAD	SA-515 GR. 70	
EXPANSION JOINT	SA-240 TP 304	
CHANNEL & NOZZLE LAPS	SA-240 TP 31G	

NOZZLE DATA									
MARK	NO.	SIZE	A.S.A. REQ.	A.S.A. RATING	FAC. ING.	TYPE	NECK	SERVICE	DETAIL
S1	1	20"	150*	R.F.	S.O.	3000*	3/8"	SHELL INLET	"B"
S2	1	6"	150*	R.F.	S.O.	3000*	3/8"	SHELL OUTLET	"B"
T1	1	14"	150*	R.F.	S.O.	3000*	1/4"	CHANNEL INLET	"A"
T2	1	30"	3000*	—	—	—	1/4"	CHANNEL OUTLET	"D"
D1	1	1"	3000*	THR'D	PIPE FULL CPG.	—	—	CHAN. DRAIN (PLUGGED)	"C"
D2	1	1"	3000*	THR'D	PIPE FULL CPG.	—	—	CHAN. DRAIN (PLUGGED)	"E"
A, A1	4	3/4"	3000*	THR'D	PIPE FULL CPG.	—	—	T.W. (PLUGGED)	"C"
B, B1	4	3/4"	3000*	THR'D	PIPE FULL CPG.	—	—	T.W. (PLUGGED)	"C"
V	1	3/4"	3000*	THR'D	PIPE FULL CPG.	—	—	SHELL VENT (PLUGGED)	"C"
V1	1	3/4"	3000*	THR'D	PIPE FULL CPG.	—	—	CHAN. VENT (PLUGGED)	"E"

ALSO DESIGNED AND CONSTRUCTED IN ACCORDANCE WITH TEMA CLASS "B" 1968 EDITION AND CUSTOMER SPEC. 5CS-3E1. SO INSPECTED AND CODE STAMPED.

1) BOLT HOLES OF ALL FLANGES TO STRADDLE MAIN C'S.  
 2) COVER FLG. FACES WITH WOODEN COVERS BOLTED ON.  
 3) COAT THREADS OF BOLTS WITH A LUBRICANT.  
 4) PAINT OR STENCIL CUSTOMER ITEM NO. AT LEAST 3" HIGH IN A CONSPICUOUS LOCATION.

PER USAS 816.30-1969.

PREPARATION AND PAINTING OF C-STEEL EXTERNAL UNMACHINED SURFACES:  
 HAND OR POWER TOOL CLEAN AND APPLY ONE (1) COAT OF RED LEAD PRIMER.

GROSS SURFACE		
EMPTY	BUNDLE	FLOODED (WITH H <sub>2</sub> O)
24,500 LBS.	—	43,200 LBS.

CUSTOMER ORDER NO. 026-35043 #104205  
 CUSTOMER ITEM NO. E-4205-2A #104206

NO. OF UNITS REQUIRED: 1

B.P.F. NO. 42317 DATE 8/18/72  
 APPARATUS E-4205-2A  
 NO. E-4204-2B

**IPE INDUSTRIAL**  
 8 LISTER A

PROJECT & ACCOUNT: 26035 2027  
 ORDER NO. 336-026-35043

PLANT: HANOVER  
 APPROVED BY: H.G. Scholer

HERCULES INC., HANOVER PA

GASKET DATA				BOLTING DATA				REFERENCE DRAWINGS:	
LOCATION	NO. REQ.	DESCRIPTION	MATERIAL	NO. REQ.	DESCRIPTION	MATERIAL			
COVER TO CHAN. CONN.	2	1 1/8" THK. x 3 3/4" I.D. x 3 1/4" O.D. FLUOROPOLYMER	FLUOROPOLYMER	80	3/8"-11 STUD BOLTS-6 3/4" C.L.	SA-193 B7/SA-194 2H	C-6900-1 SETTING PLAN		
		1 1/8" THK. x 5 1/2" I.D. x 5 1/2" O.D. S.S. 316 W/SS. FILLER C.S.T. RET. RING	S.S. 316 W/SS. FILLER C.S.T. RET. RING	160	5/8"-11 STUD BOLTS-6 3/4" C.L.	SA-193 B7/SA-194 2H	F-6900-4 T.S. TUBE BUNDLE DET.		
							A-6896-4 NAME PLATE BRACKET		

SHIP 100 SE WITH UNIT PROPERLY PACKED AND IDENTIFIED ONE (1) SET OF SPARE GASKETS ORDERED ON JOB NO. 6901.

CONTRACT		REVISIONS	
1685		DATE	BY
		2-1-72	A.J.T.
		2-7-72	
		2-8-72	