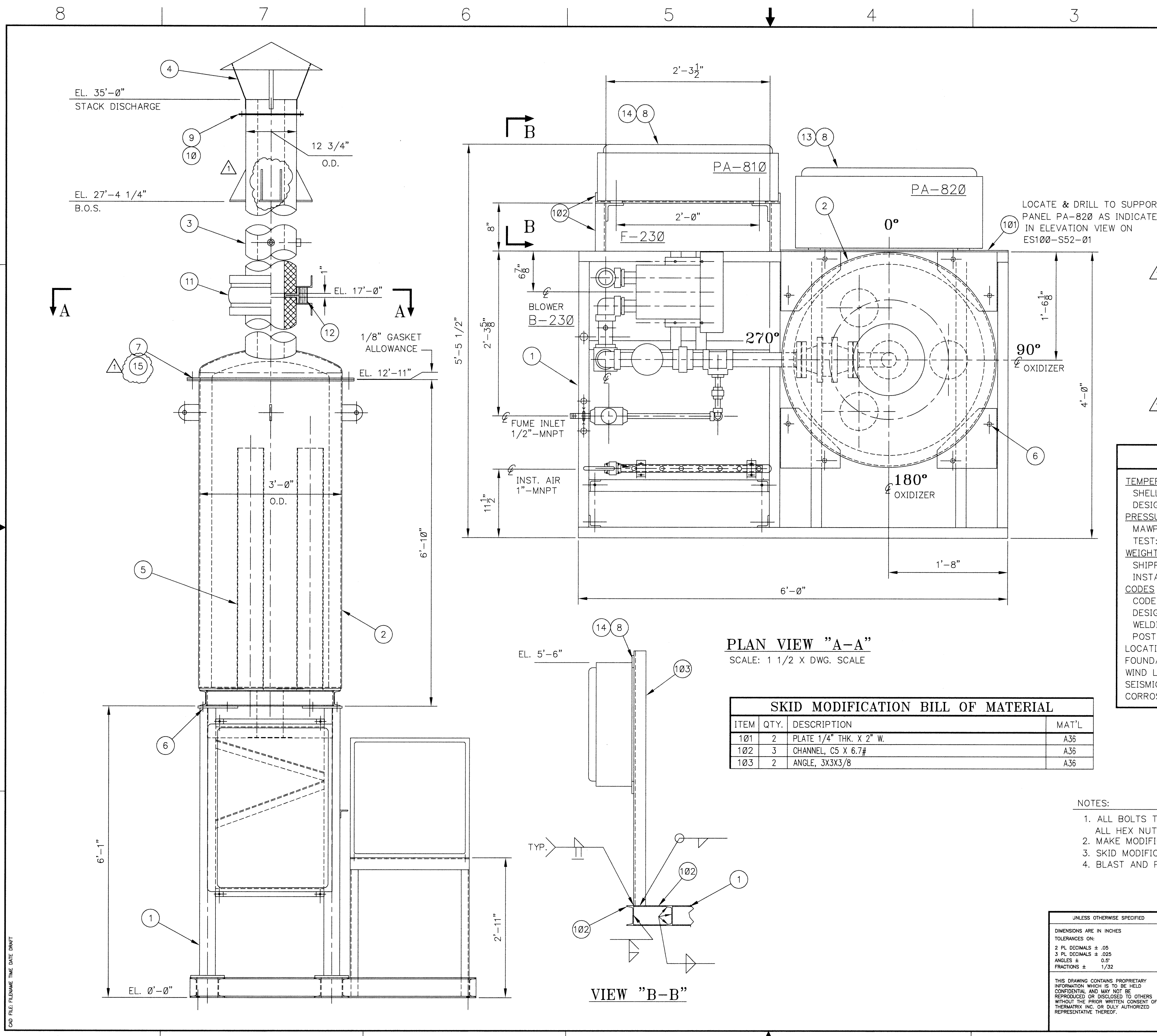


REVISIONS				
REV	PCIN	DESCRIPTION	DATE	APPR
0		ISSUED FOR CONSTRUCTION	3/10/03	TMW
1		AS-BUILT	09/03/2003	REF

BILL OF MATERIAL				
ITEM	QTY.	DESCRIPTION	MAT'L	
1	1	SKID ASSEMBLY - DWG. ES100-S52-01		
2	1	OXIDIZER ASSEMBLY - DWG. ES100-M33-01		
3	1	STACK ASSEMBLY - DWG. 4172-M33-05		
4	1	STACK CAP - DWG. ES100-M32-06		
5	3	HEATER ASSEMBLY - DWG. ES100-M33-07		
6	8	5/8-11 UNC HEX HD BOLT X 2" LG. W/ HEX NUTS & F'WASHERS	NOTE 1	
7	1	ROPE GASKET		
8	8	3/8"-16 UNC HEX HD BOLT X 1 1/2" LG. W/ HEX NUTS & F'WASHERS	NOTE 1	
9	1	GASKET		
10	12	3/8-16 UNC HEX HD BOLT X 1" LG. W/ HEX NUTS & F'WASHERS	NOTE 1	
11	1	EXPANSION JOINT, 12" NOM PIPE SIZE, PER TMX DWG. 500-M99-31, INCLUDING BELT, TEFLON GASKET, BACKING BARS & FASTENERS. ROLLED ANGLE INCLUDED AS PART OF STACK ASSY.		
12	1	(2) 1" LAYERS OF 2500°F CERAMIC FIBER BLANKET. HOLD IN PLACE WITH 1/2" X Ø.023 ZINC COATED STEEL STRAPPING. REF. 500-M99-31 FOR DETAILS.		
13	1	POWER PANEL, PA-820 DWG. ES100-E41-04		
14	1	CONTROL PANEL, PA-810 DWG. ES100-E41-01		
15	24	3/4"-10 UNC HEX HD BOLT X 2" LG. W/ HEX NUTS & F'WASHER	NOTE 1	

VESSEL DESIGN DATA			
TEMPERATURES			
SHELL OP:	300°F-400°F	INTERNAL OP:	2100°F
DESIGN:	600°F	MDMT:	DESIGN INTERNAL 2100°F
PRESSURES			
MAWP:	N/A	OPERATING:	1 psig
TEST:	STANDING WATER TEST		
WEIGHTS			
SHIPPING:	2700 LBS	MEDIA:	1100 LBS
INSTALLED:	3870 LBS	REFRACTORY:	70 LBS
CODES			
CODE STAMP REQUIRED:	NO		
DESIGN & CONSTRUCTION:	ASME SECT. VIII DIV. I, 1995 ED.		
WELDING:	N/A	IMPACT:	N/A
POST WELD HT TREATMENT:	N/A		
LOCATION:	INDOORS, NEWTOWN SQUARE, PA		
FOUNDATION/SUPPORTS:	4 POINT SUPP'T FROM SKIRT FLG		
WIND LOAD:	N/A		
SEISMIC ZONE:	ZONE 2A		
CORROSION ALLOWANCE:	1/16"		



PLAN VIEW "A-A"
SCALE: 1 1/2 X DWG. SCALE

SKID MODIFICATION BILL OF MATERIAL			
ITEM	QTY.	DESCRIPTION	MAT'L
101	2	PLATE 1/4" THK. X 2" W.	A36
102	3	CHANNEL, C5 X 6.7#	A36
103	2	ANGLE, 3X3X3/8	A36

- NOTES:
- ALL BOLTS TO BE ASTM A193 GR B7 GALVANIZED.
 - ALL HEX NUTS TO BE ASTM A194 BR 2H, GALVANIZED.
 - MAKE MODIFICATION TO SKID PRIOR TO SKID PAINTING.
 - SKID MODIFICATION SHALL BE IN ACCORDANCE WITH TMX SPEC MFP-104A.
 - BLAST AND PAINT ALL EXTERIOR SURFACES IN ACCORDANCE WITH TMX SPEC MFP-108B.

UNLESS OTHERWISE SPECIFIED		SIGNATURES		DATE
DIMENSIONS ARE IN INCHES		DRAWN	TMW	2/10/03
TOLERANCES ON:		CHECKED	GAM	3/14/03
2 PL DECIMALS ± .05		ENGINEERING	SJS	3/14/03
3 PL DECIMALS ± .025		PROJECT	GMC	3/14/03
ANGLES ± 0.5°		USE CLIENT DWG NO	N/A	
FRACTIONS ± 1/32				
CLIENT: LYONDELL CHEMICAL NEWTOWN SQUARE, PA. GENERAL ARRANGEMENT / ASSEMBLY				
SCALE: 1"=1'-0"		PROJECT NO. 02E-4172		SHEET 1 OF 1

CAD FILE: FILENAME TIME DATE DRAFT