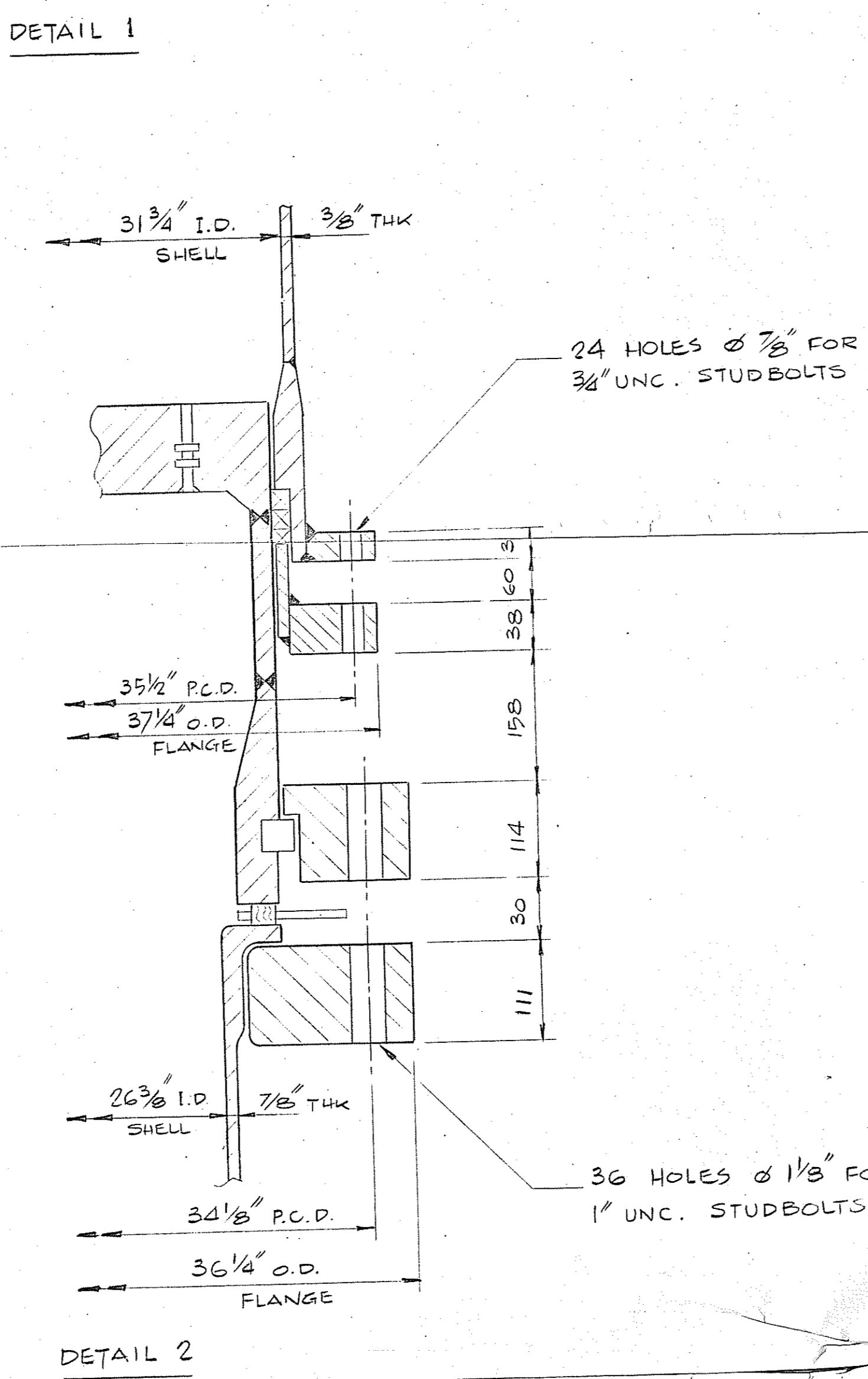
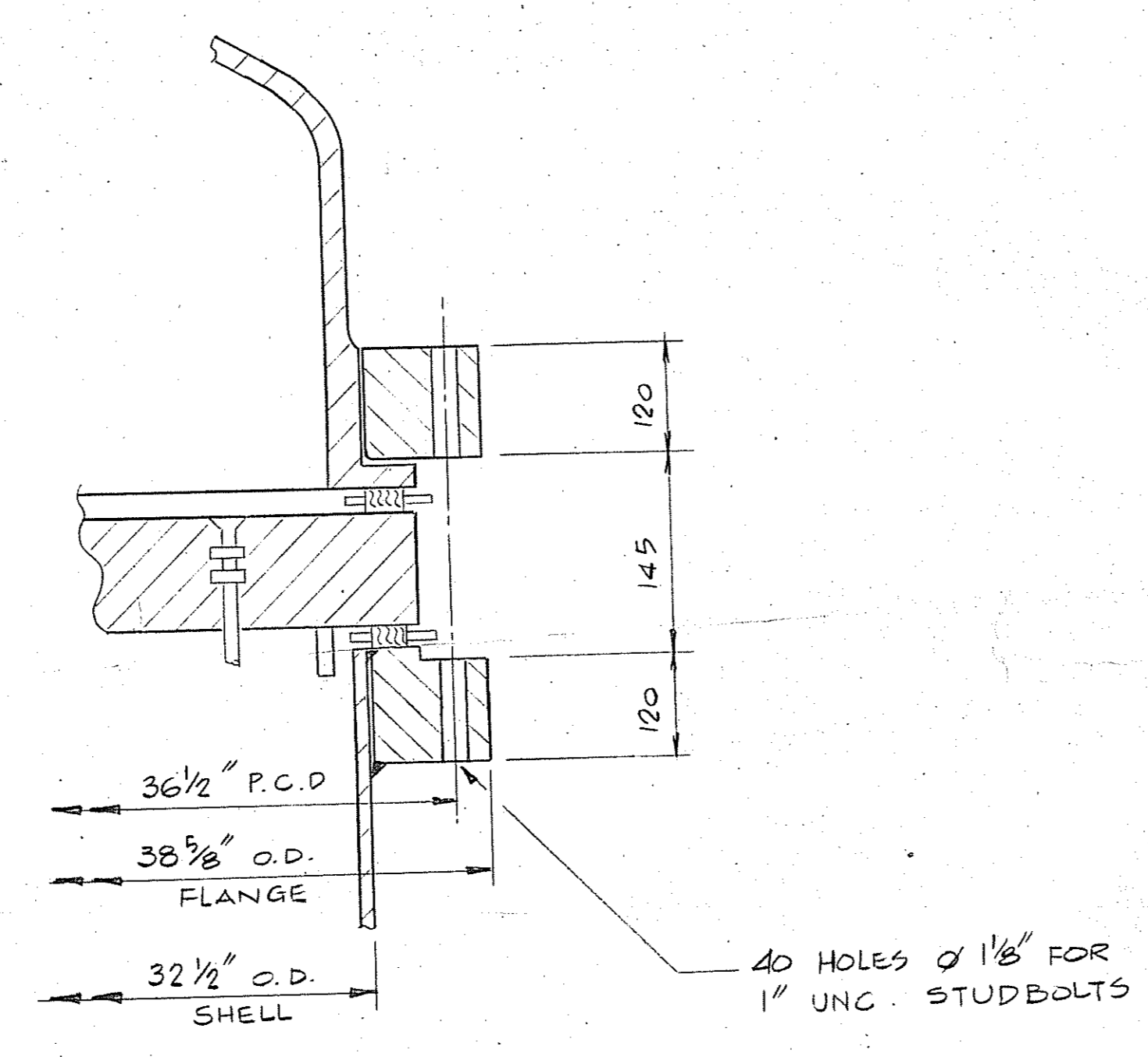
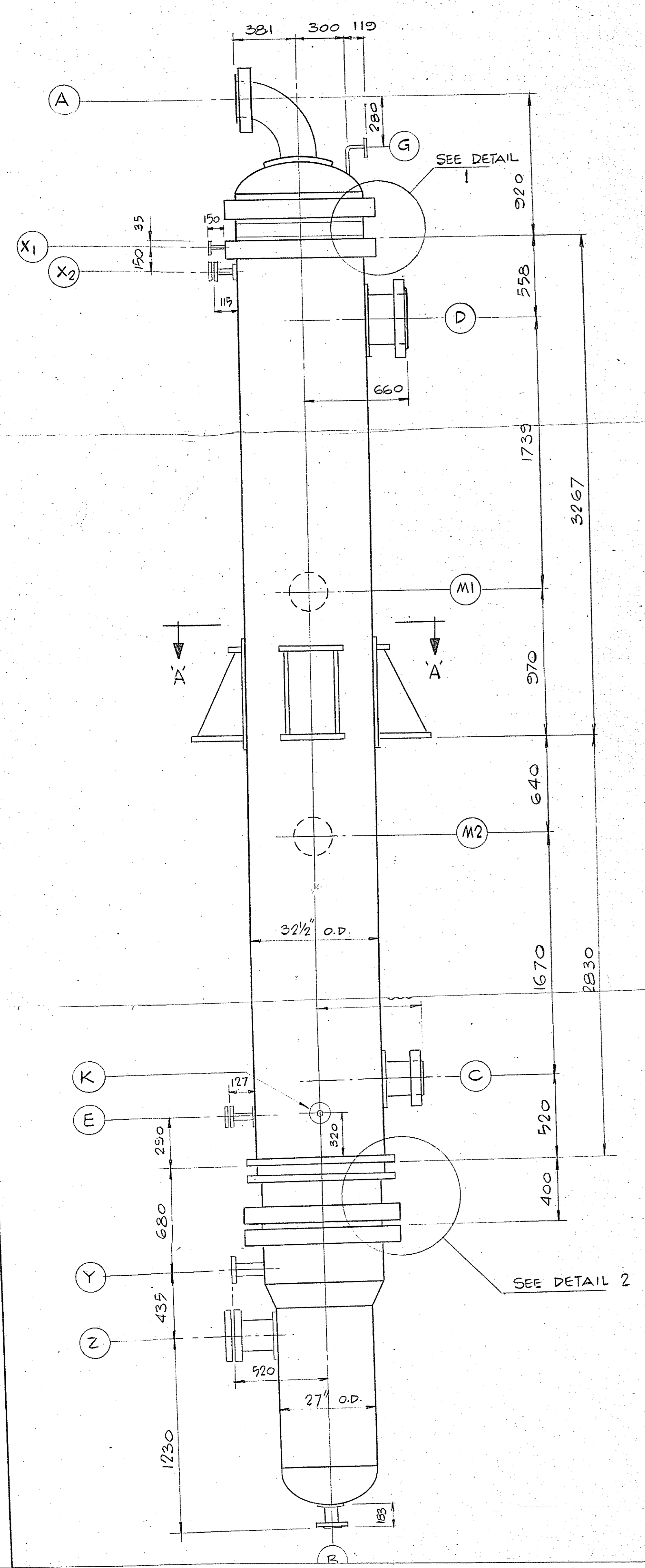
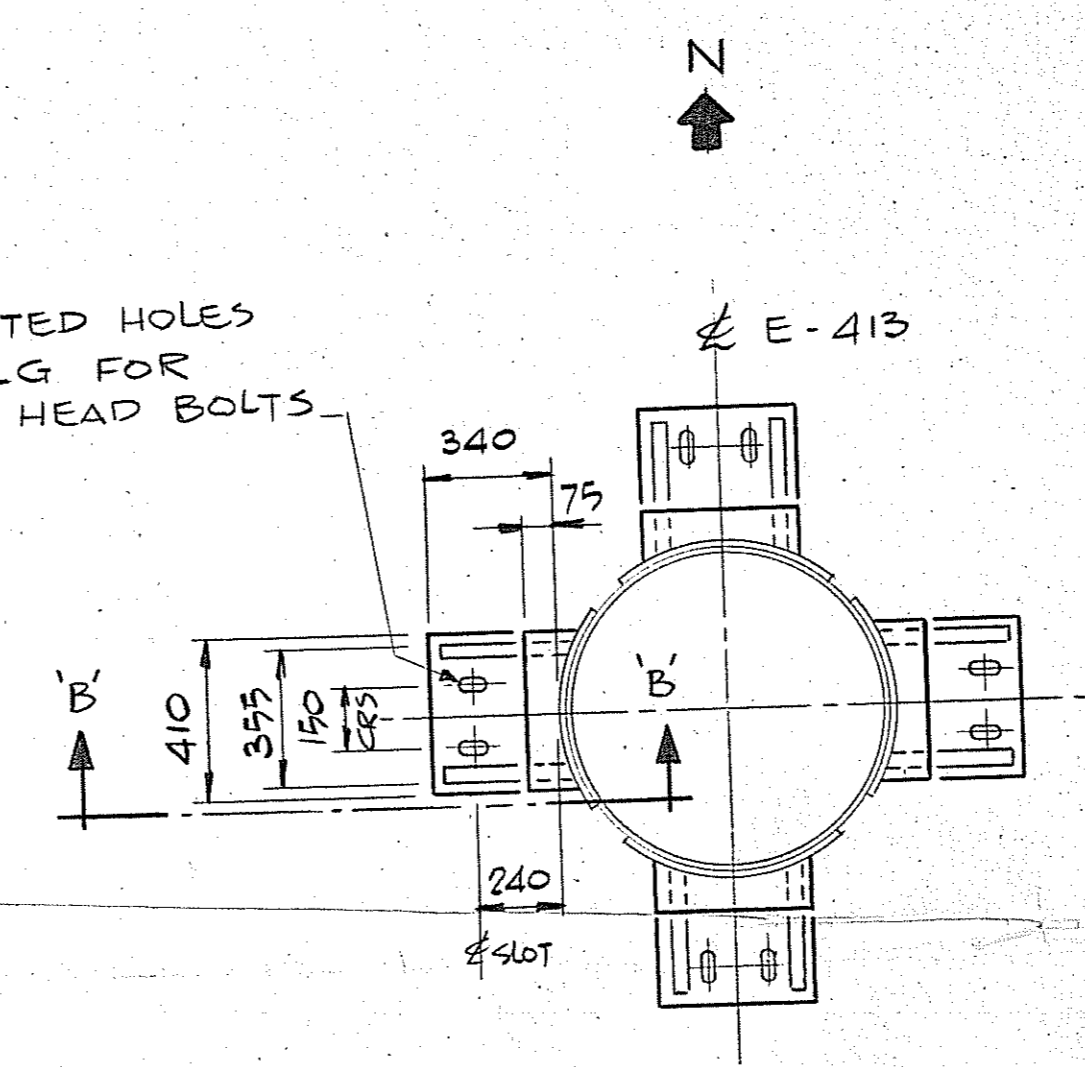


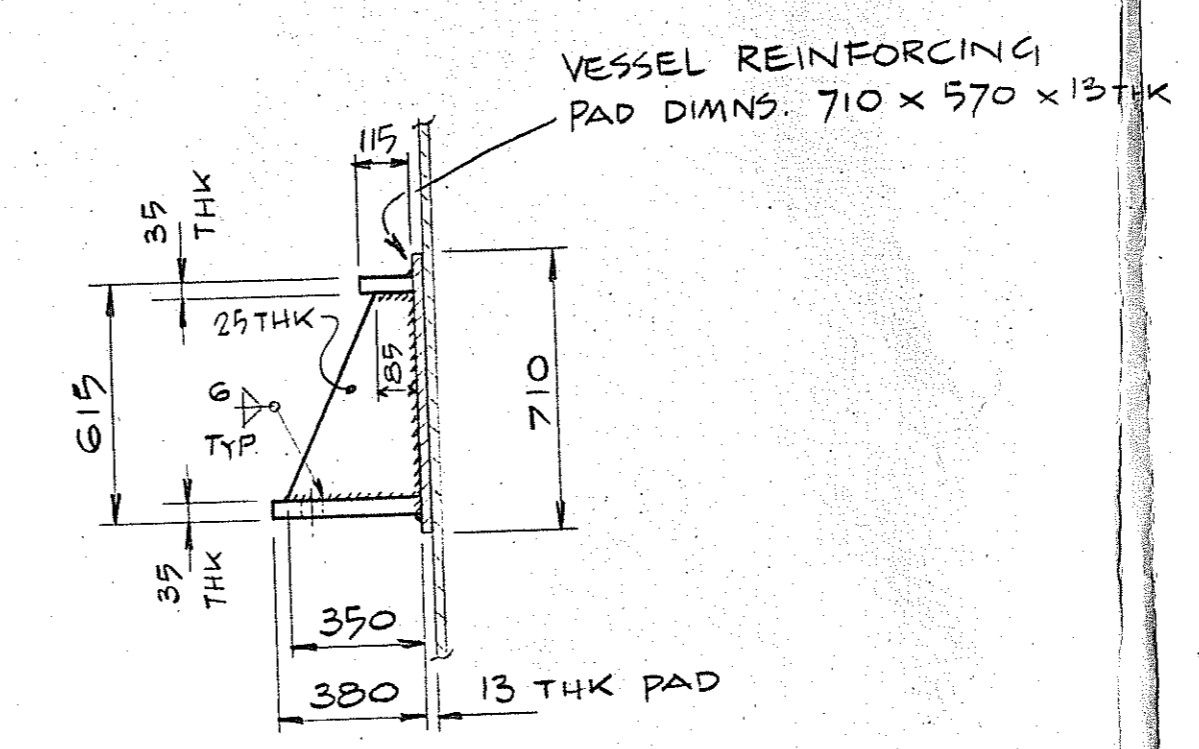
718 01581
718 01654
718 01660



8 NO SLOTTED HOLES
Ø 22 x 45 LG FOR
M20 HEX. HEAD BOLTS



SECTION 'A'-'A'



SECTION 'B'-'B'
(VERTICAL GUSSET PLATES)

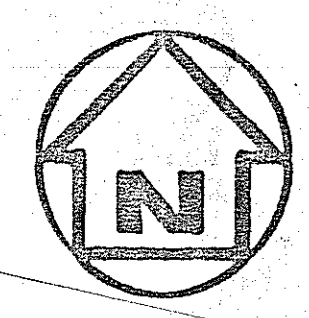
GENERAL NOTES

- ALL DIMENSIONS GIVEN ON THIS DRAWING REFLECT THE 'AS BUILT' STATUS OF VESSEL E-413
- VESSEL BODY FLANGES ARE SHOWN WITH OD. AND P.C.D. IN IMPERIAL DIMENSIONS FOR PURPOSES OF RE-MATCHING

NOZZLE DATA

MARK	SIZE	RATING	FACING	WALL THK	SERVICE
A	10" NB	300#	L.J.	EX. STG	PROCESS IN
B	3" NB	300#	R.F.	SCH 40	PROCESS OUT
C	8" NB	150#	R.F.	SCH 40	CONDENSATE IN
D	14" NB	150#	R.F.	SCH 40	STEAM & WATER OUT
E	1/2" NB	150#	R.F.	SCH 40	BLOWDOWN CONN. (BLANKED)
G	1" NB	300#	L.J.	SCH 160	CAUSTIC CONN. (BLANKED)
M1	6" NB	150#	R.F.	PAD	INSPECTION (BLANKED)
M2	6" NB	150#	R.F.	PAD	INSPECTION (BLANKED)
X2	1" NB	150#	R.F.	SCH 80	VENT (BLANKED)
K	1" NB	150#	R.F.	SCH 80	DRAIN CONN. (BLANKED)
Y	3" NB	300#	R.F.	SCH 40	WATER INLET
Z	8" NB	300#	R.F.	SCH 40	INSPECTION (BLANKED)

PRELIMINARY



PLAN VIEW
(TRUE ORIENTATION)

ISSUE	REVISIONS	INT'L	DATE	DRAWING No.	REFERENCE DRAWINGS

**I.C.I. CHEMICALS & POLYMERS LTD. -
TEESSIDE OPERATIONS - ENGINEERING
-WILTON, MIDDLESBROUGH, CLEVELAND.**

THIS DRAWING IS A PRIVATE AND CONFIDENTIAL COMMUNICATION AND THE PROPERTY OF IMPERIAL CHEMICAL INDUSTRIES C & P LTD. IT MUST NOT BE COPIED OR LOANED WITHOUT THE CONSENT OF ICI AND MUST BE RETURNED.

JOB No. / E.W.C. No. _____
D.D. REF. No. 900 167
CALC. No. _____
SCALE 1:20

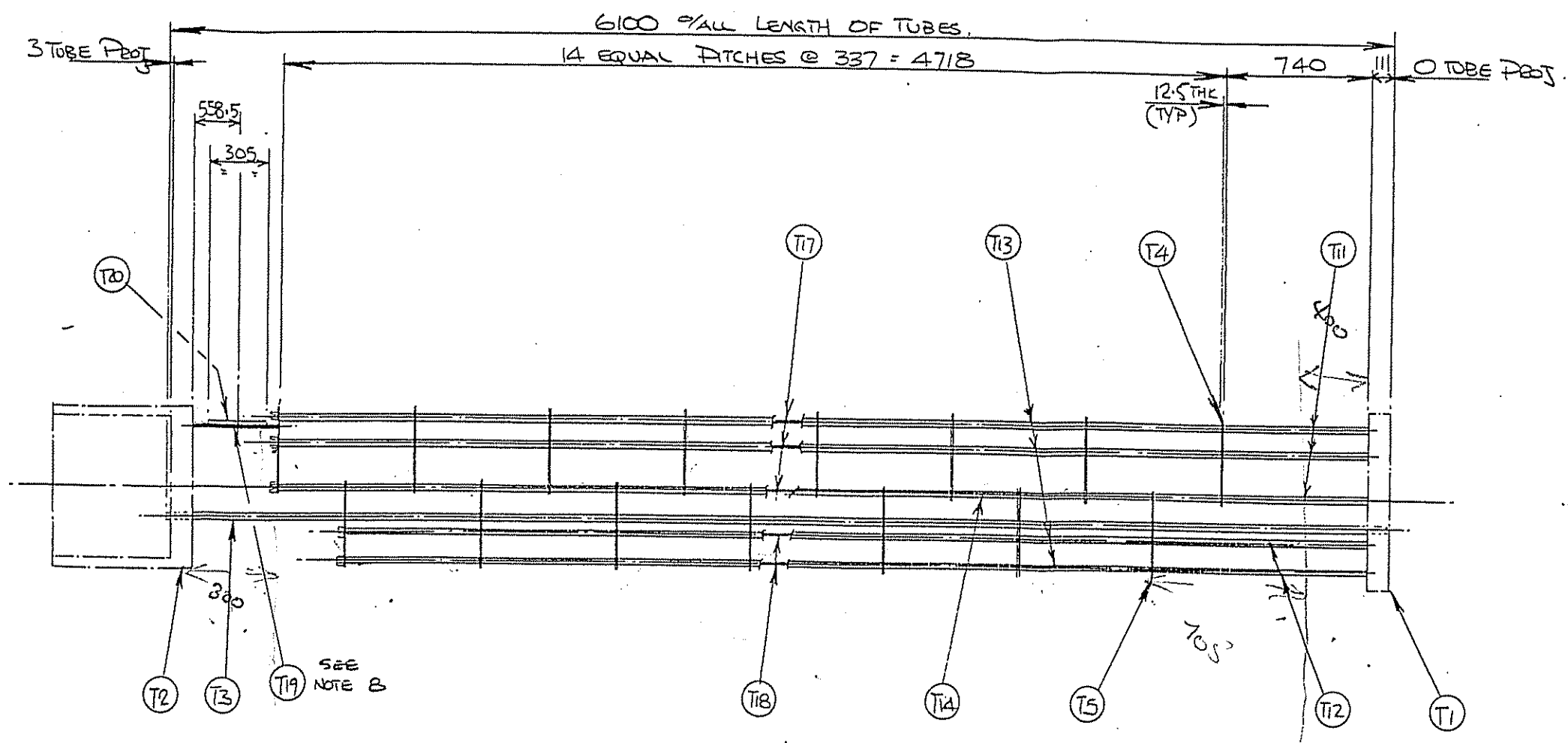
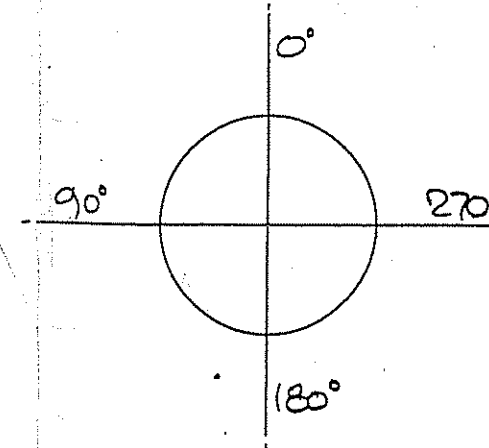
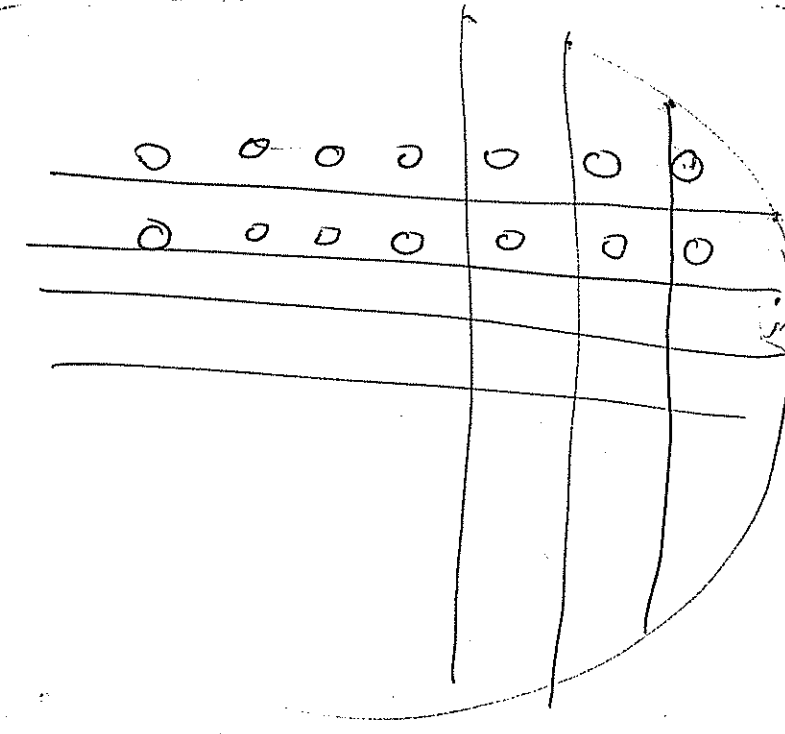
DRAWN: A. PAISLEY 25/9/00
CHECKED: D. NASSAU 26/9/00
APPROVED: _____

PLANT TA-T7
BUSINESS AREA OXIDATION
MART. LIST
PROJECT No. _____

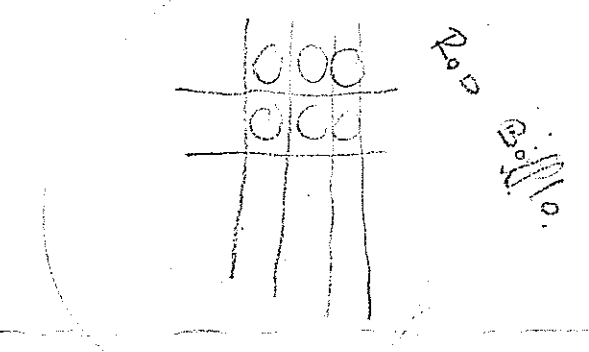
TITLE 'AS BUILT' G.A. OF E-413 REACTOR CONDENSER
DRG. No. D/A7/14/5922

DRG. SIZE DE
ISSUE PI

DRG. No. D/A7/14/5922



ELEVATION

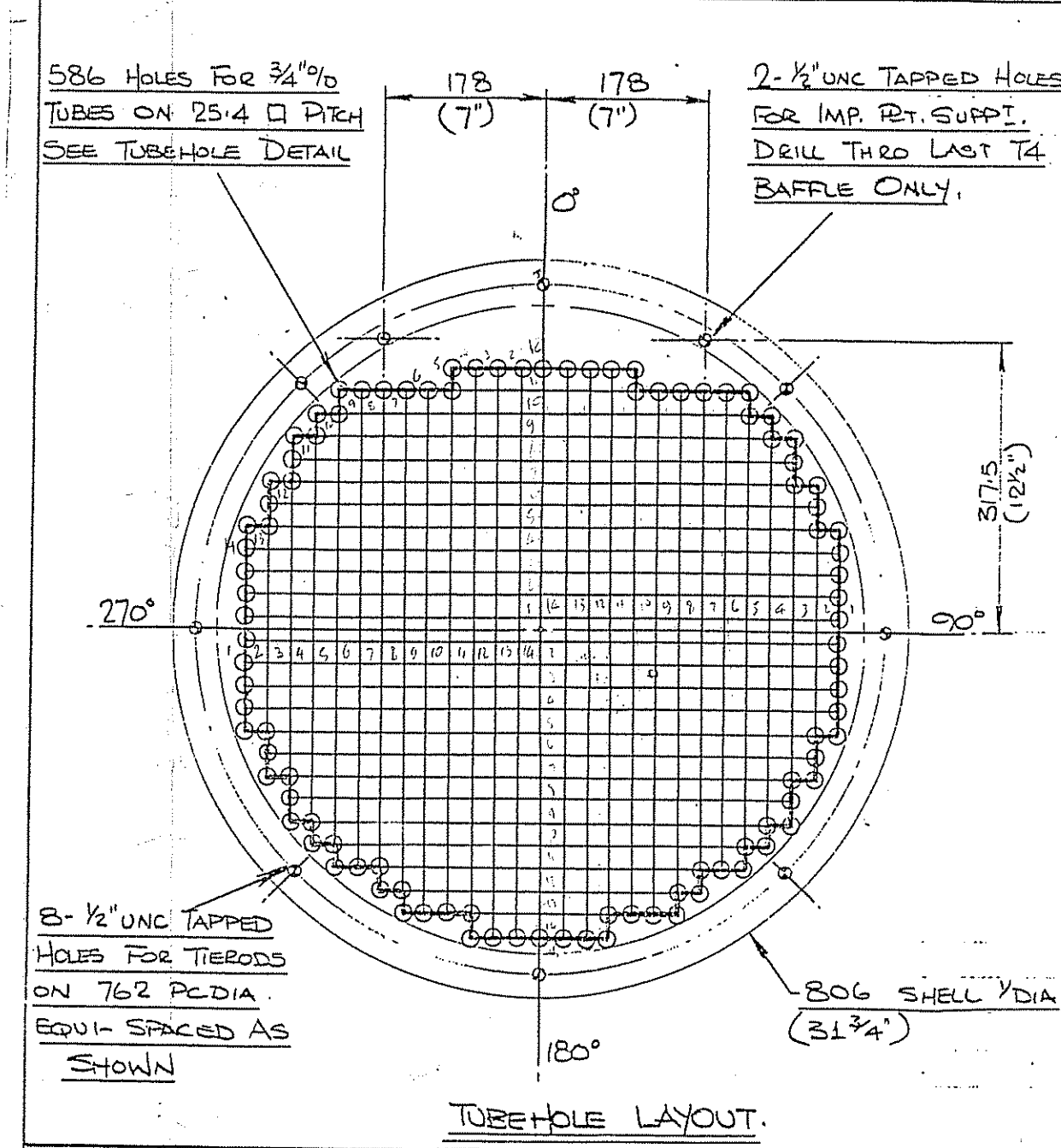


BILL OF MATERIAL FOR ONE ASSEMBLY AS DRAWN

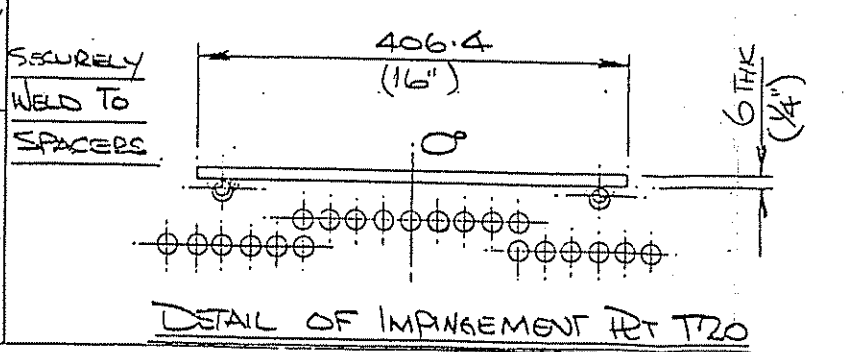
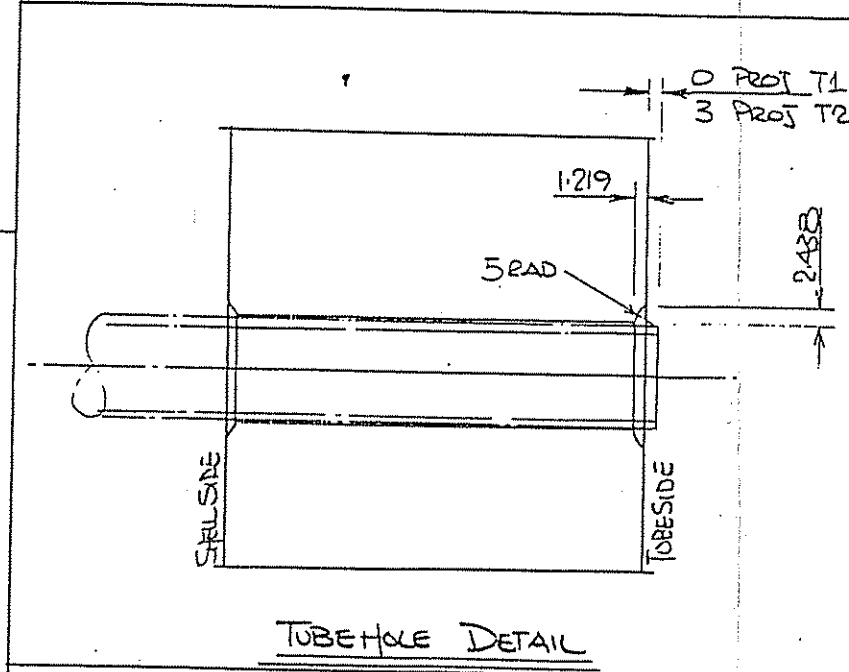
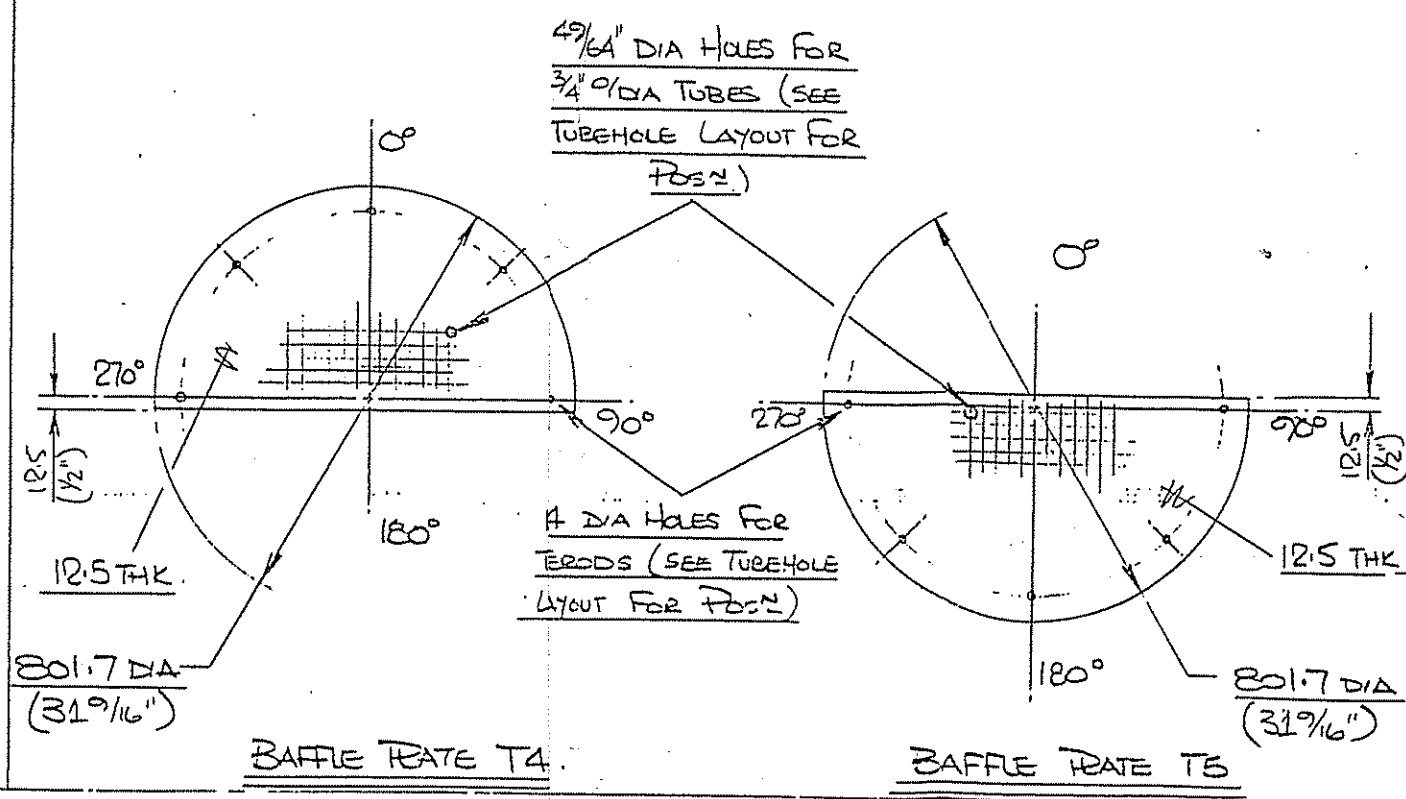
REF. NO.	NO. OFF.	MATERIAL	TYPE	DESCRIPTION	REQ. NO.
T1	1	IMI-125 (R265GRT)	T	STATIONARY TUBESHEET	
T2	1	IMI-125 (R265GRT)	T	STATIONARY TUBESHEET	
T3	586	R 238 G 2	T	TUBES: 3/4" x 1.85 W.G. x 6100 L	131/1
T4	8	A 240 TP 304	S	BAFFLE PLATE	12/1
T5	7	A 240 TP 304	S	BAFFLE PLATE	12/1
T11	5	A 213 TP 316	S	SPACER: 3/4" x 1.85 W.G. x 740 L	23/1
T12	3	A 213 TP 316	S	SPACER: 3/4" x 1.85 W.G. x 1077 L	23/1
T13	39	A 213 TP 316	S	SPACER: 3/4" x 1.85 W.G. x 6615 L	23/1
T14	28	A 213 TP 316	S	SPACER: 3/4" x 1.85 W.G. x 324.5 L	23/1
T17	5	TP 304	S	TIERODS 12.5 DIA x 5510 L	24/1
T18	3	TP 304	S	TIERODS 12.5 DIA x 5175 L	24/1
T19	2	TP 304	S	TIERODS 12.5 DIA x 475 L	24/1
T20	1	A 240 TP 304	S	IMPROVEMENT PLATE	12/2

GENERAL NOTES

- FOR SHELL/CHANNEL, TEST DETAILS & DESIGN DATA SEE MBT DES. NO. 85/908/EF 21
- ONE ASSEMBLY REQD AS DRAWN MARK- E413.
- MACHINE FINISH AS FOLLOWS:-
 XXX 63 μ MICROINCHES (GASKET FINISH)
 XX 125-250 μ MICROINCHES (SMOOTH FINISH)
 V 500-1000 μ MICROINCHES (MACHINE FINISH)
- BAFFLE PLATE EDGES TO BE DEBURRED & TUBEHOLES TO HAVE A WORKMANLIKE FINISH
- TUBE END ATTACHMENT:- STRENGTH WELDED.
- WEIGHT OF TUBEBUNDLE =
- MATERIALS MARKED THUS * HAVE TO BE SALVAGED FROM EXISTING BUNDLE & REUSED.
- TIERODS "T19" TO RUN FROM T8HT "T2" TO LAST "T4" BAFFLE ONLY. ENDS TO BE FREE IN BAFFLE.



UNSERVICED COPY



REVISION	0	TO CLIENT FOR APPROVAL
DATE		RELEASED FOR CONSTRUCTION
ALTERED BY		
APPROVED BY		

MOTHERWELL EDGE THERMAL LTD	
PURCHASER	ICI DES. NO. D107/15/4100
CONTRACT	BILLINGHAM
TITLE	DETAILS OF BRACEMENT TUBEBUNDLE FOR UNIT NO. E413.
PURCHASER'S ORDER NO	62/245A-16/INI/WS
CONTRACT NO	85/908
DRAWING NO	85/PX8 EF 24.
DRAWN BY	CPK/MS
CHECKED BY	CPK
APPROVED BY	MSK
SCALE	
REVISION	0