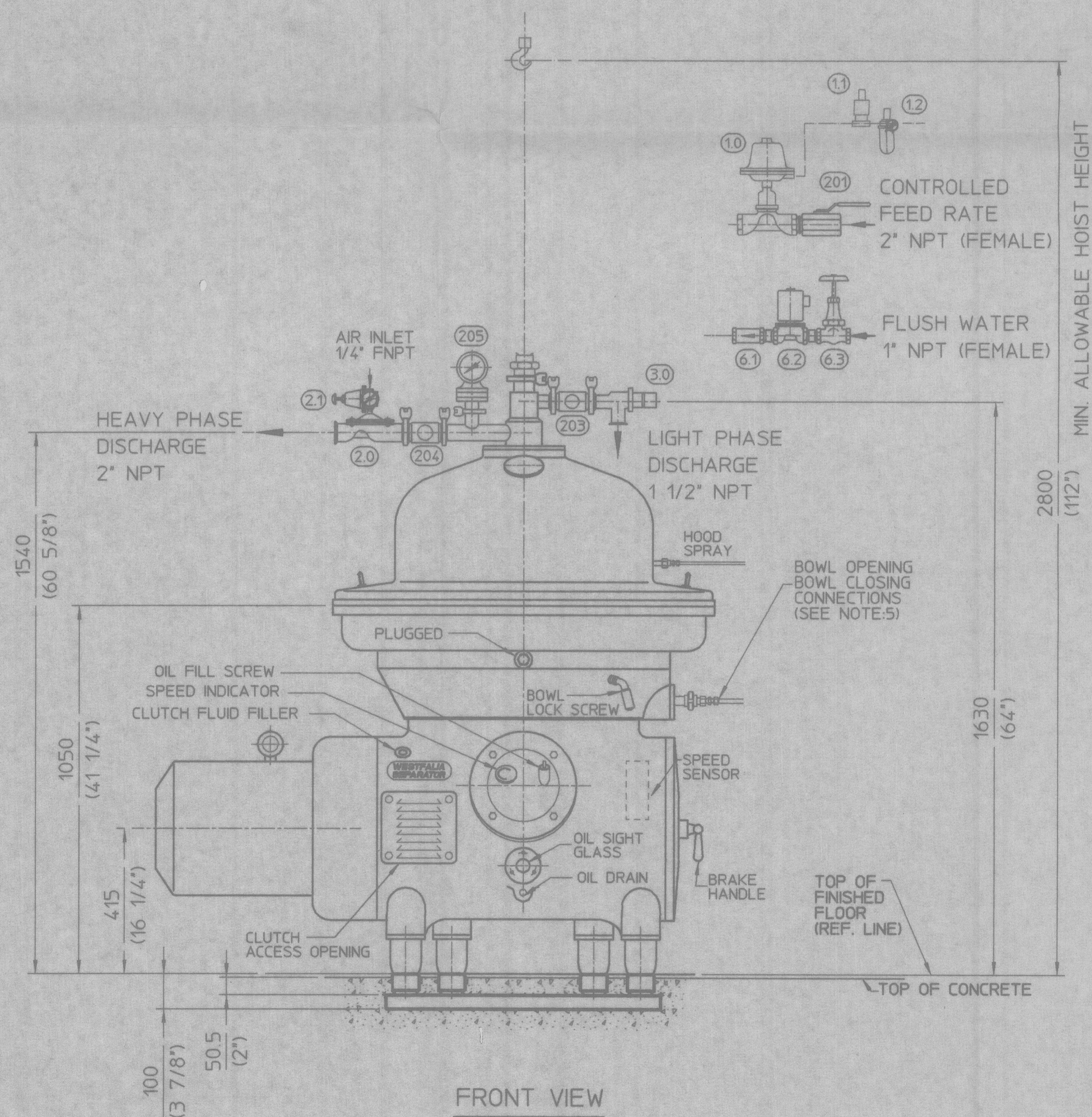
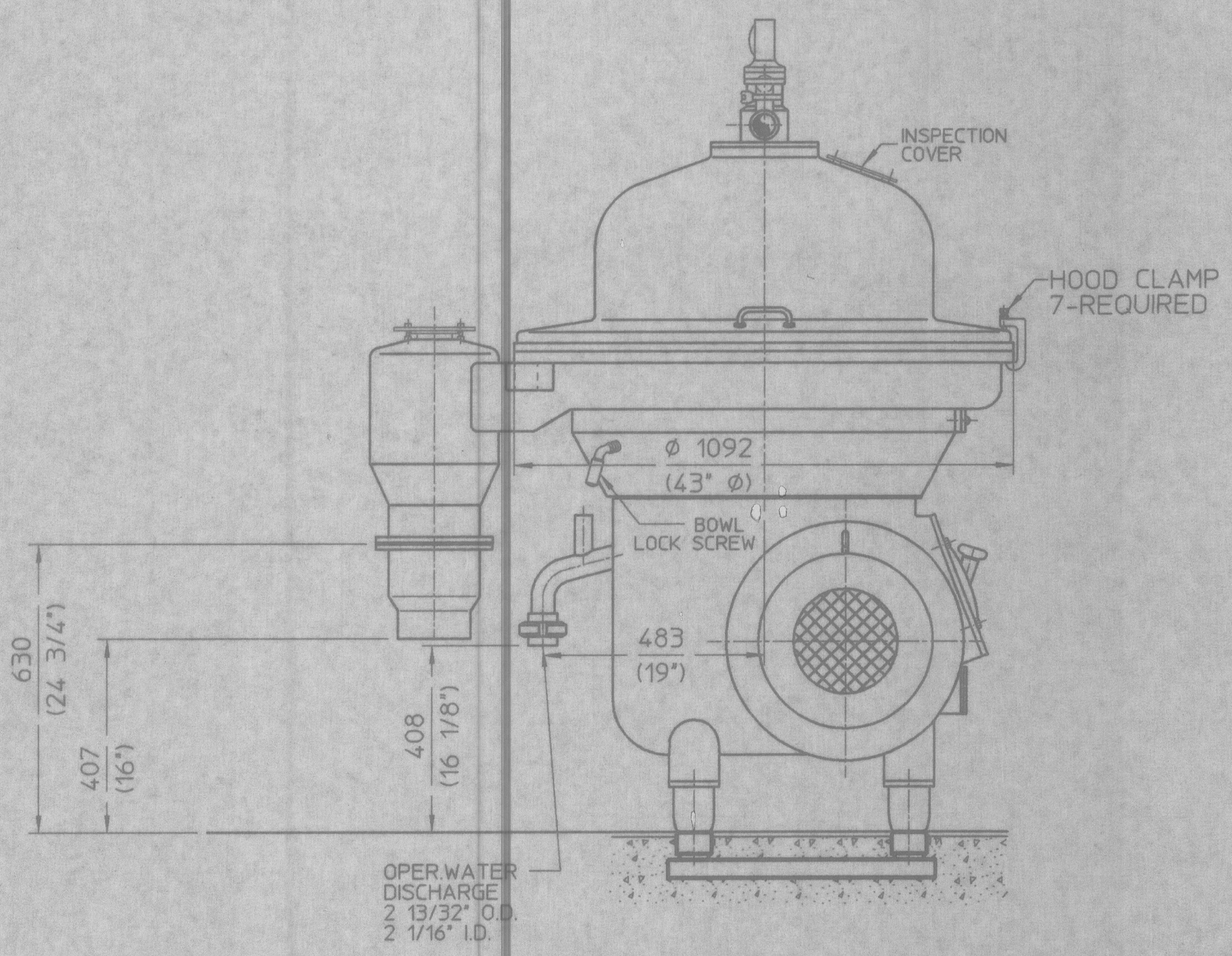
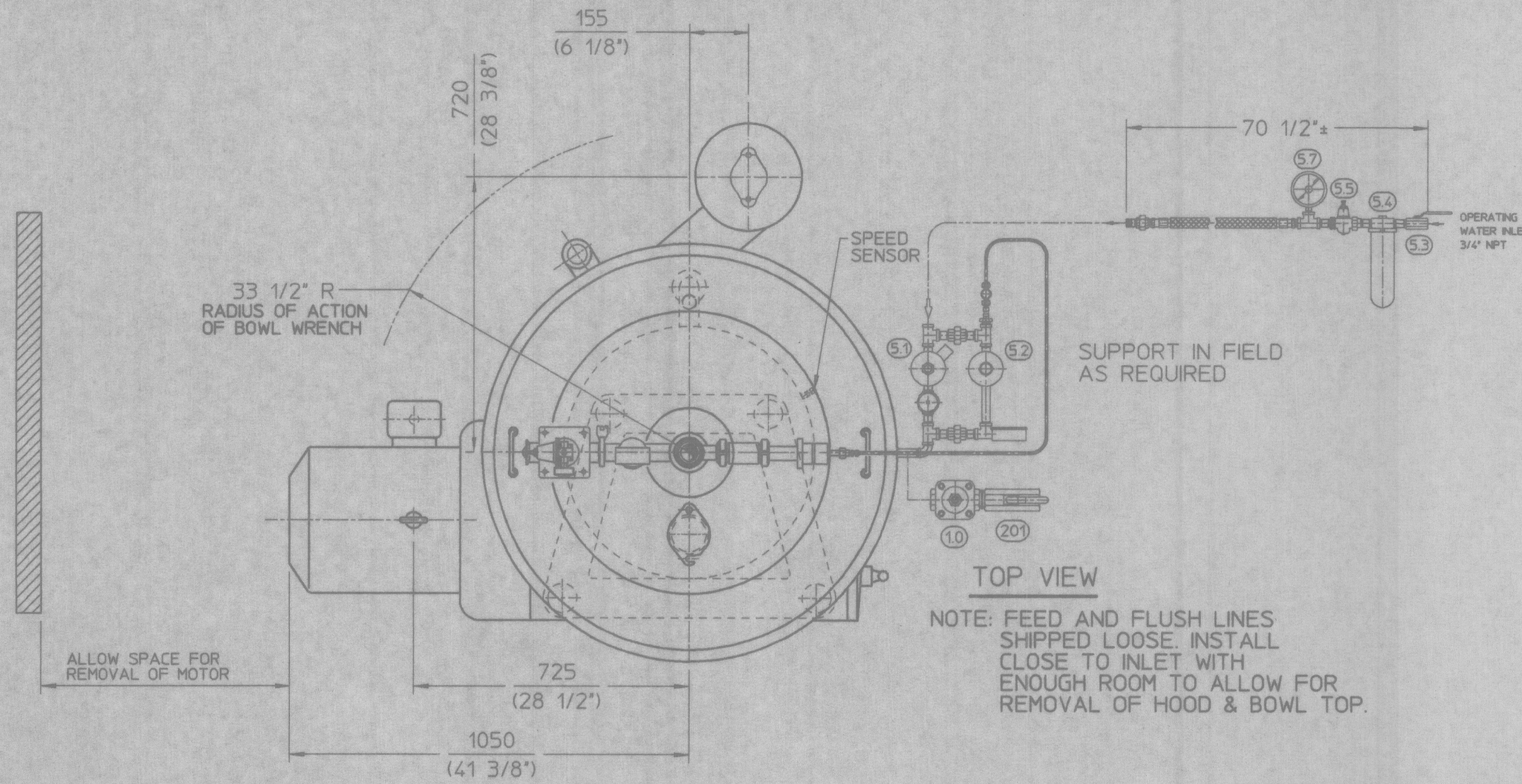


REVISIONS				
ZONE	No.	DESCRIPTION	DATE	APPROVED
	0	RELEASED FOR MANUFACTURE	2/8/95	PB

220187 INSTALLATION DRAWING
220188



- NOTES**
- REFER TO INSTRUCTION MANUAL FOR INSTALLATION NOTES.
 - SEE DRAWING NO. 1231-02 FOR FOUNDATION DETAIL.
 - METRIC DIMENSIONS WHERE GIVEN ARE PER FACTORY FABRICATION DRAWINGS. ENGLISH EQUIVALENTS ARE SUPPLIED IN BRACKETS TO ACCURACIES OF ±1/16".
 - ELEVATIONS FOR FEED AND DISCHARGE HOUSING MAY VARY ±1" DEPENDING UPON MACHINE.
 - MOUNT WATER LINE AS SHOWN. OTHERWISE, CONTACT CENTRICO.
 - IF WATER PRESSURE GAUGE IS MOUNTED DIRECTLY ON WATER REGULATOR, MOUNT WITHIN 10 FT. OF SEPARATOR.
- TOTAL NET WEIGHT OF MACHINE : 2205 KGS. (4860 LBS.)
MIN. LIFTING CAPACITY OF HOIST : 500 KGS. (1102 LBS.)

Drawn	S.M.D.	Date	1-20-95		
Checked EE:	DI	Date:	2/3/95		
Checked HE:	LRB	Date:	2/7/95	Title INSTALLATION PLAN (MSA 100-01-076)	
Approved EE:		Date:			
Approved RE:		Date:		Size	D
Approved	PB	Date:	2/8/95	Scale	1:12
				Dwg. No.	9140-4100-044
				Rev.	0
				Sheet	1 OF 1