



NEW INVENTORY



111913 PUMPS-VACUUM



ADDITIONAL DESCRIPTION

Unused Nash Vectra XL series liquid ring vacuum pump. Wetted parts CF8M. Built in 2008. Test # 08D0354;

111914 PUMPS-VACUUM



ADDITIONAL DESCRIPTION

Unused Nash Vectra XL series liquid ring vacuum pump. Wetted parts CF8. built in 2008. TEST #08D0351;

111956 PUMPS-VACUUM



ADDITIONAL DESCRIPTION

Unused Nash Vectra XL series liquid ring vacuum pump. Wetted parts CF8M; Built in 2008; TEST #08D0152;

CONTACT:

Louisiana Chemical Equipment Co., L.L.C

Tony Rojas. Cel: 3007070202 E-Mail: trojas@lcec.com

Joe O'Brien. Cel: 225-806-7781 E-Mail: jobrien@lcec.com

www.LCEC.com



NEW INVENTORY



111954 PUMPS-VACUUM



ADDITIONAL DESCRIPTION

Unused Nash Vectra XL series liquid ring vacuum pump, Wetted parts CF8M. Built in 2008; Test #08D0110;

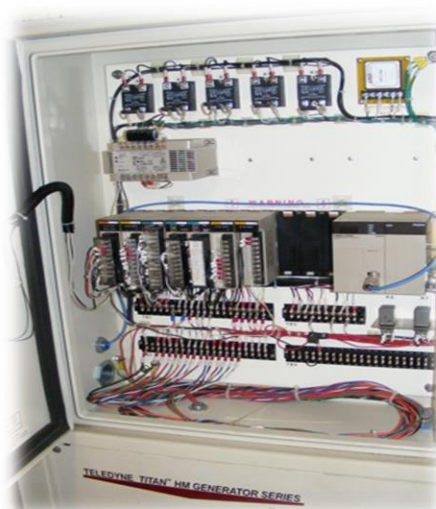
113065 PUMPS-VACUUM



ADDITIONAL DESCRIPTION

Used Horizontal Nash compressor. Model CL4001C. Electric motor drive. 3900 ACFM @ 380 RPM. Previous Service: Step #1 recycle.

102157 GENERATORS



ADDITIONAL DESCRIPTION

0.8 KW; ULTRAPURE HYDROGEN/OXYGEN GENERATOR ASSEMBLY; MFG. BY TELEDYNE; TITAN HM GENERATOR SERIES; MODEL HM C1D2(100); PART # TS4000-019; THE TITAN SET FEATURES THE FOLLOWING BENEFITS, PRESSURIZED "ON DEMAND" 99.9998% PURE HYDROGEN AND 99.999% PURE OXYGEN (WITH AUXILIARY PURIFIER); SAFE AUTOMATIC OPERATION; SIMPLIFIED INSTALLATION; AND ON DEMAND GAS DELIVER; SYSTEM INCLUDES SEPARATE POWER SUPPLY WITH INTEGRATED RECTIFIER; OXYGEN PURIFIER ALSO AVAILABLE; SEE LCEC #102158; SYSTEM SPEC ARE: RATED GAS FLOW (H₂/AIR) 100 SLM AT RATED GAS PRESSURE OF 100 PSI; POWER INPUT VOLTAGE 120 VAC; MAX POWER 1 KVA; SINGLE PHASE AT 50/60 HZ; FEED WATER CONSUMPTION 1.6 G/HR; APPROXIMATE DIMENSIONS ARE 37" WIDE X 43" DEEP X 68" HIGH;

CONTACT:

Louisiana Chemical Equipment Co., L.L.C

Tony Rojas. Cel: 3007070202 E-Mail: trojas@lcec.com

Joe O'Brien. Cel: 225-806-7781 E-Mail: jobrien@lcec.com

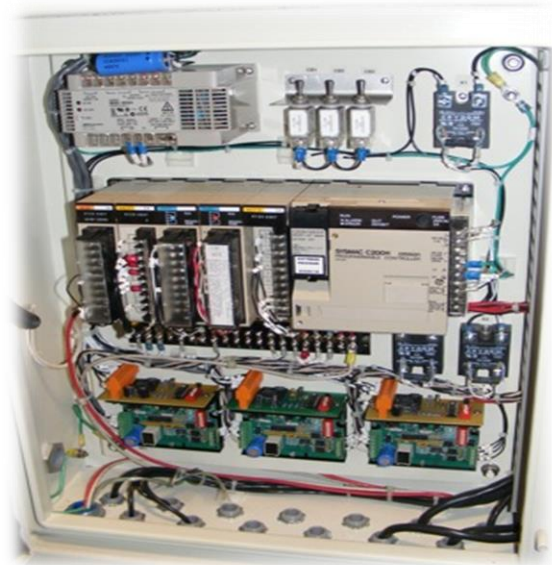
www.LCEC.com



NEW INVENTORY



102158 GENERATORS



ADDITIONAL DESCRIPTION

3.2 KW ULTRAPURE OXYGEN PURIFICATION SYSTEM; MFG. BY TELEDYNE; TITAN HM GENERATOR WERIES; MODEL #HMO2PC1D2; PART #M10009-009; DESIGNED TO WORK WITH TITAN HM GENERATOR LCEC #102157; THE PURIFICATION SYSTEM PROVIDES FOR ULTRAPURE OXYGEN 99.999% FREE OF HYDROCARBONS AND OTHER ATMOSPHERIC CONTAMINATES; THE UNIT HAS THE FOLLOWING SPECIFICATIONS: RATED GAS FLOW 50 SLM; RATED GAS PRESSURE 70 PSI; POWER INPUT VOLTAGE 120 VAC; POWER MAX 4 KVA; 50/60 HZ; SINGLE PHASE; APPROXIMATE DIMENSIONS ARE: 37" WIDE X 43" DEEP X 68" HIGH;

105558 FILTERS



ADDITIONAL DESCRIPTION

48" X 48" PERRIN FILTER PRESS, POLYPROPYLENE RECESSED PLATE, MANUFACTURED BY PERRIN MODEL NUMBER 200-S-48, SERIAL NUMBER 18366. WITH (106) NON-GASKETED RECESSED PLATES, (5) EYE, CENTER FEED DESIGN, 2 3/4" THICK, (17) OF THE PLATES ARE OPEN DELIVERY, ALL PLATES ARE MANUFACTURED BY LENSER. RATED 225 PSI FILTER PRESSURE, 2707 SQ. FT. FILTER AREA, 135 CU. FT. CAKE CAPACITY. PRESS INCLUDES, HYDRAULIC PRESS CLOSURE WITH HYDRAULIC POWER UNIT, OVERHEAD CHAIN TYPE PLATE SHIFTER, FEED END FERROUS MAGNET MANUFACTURED BY FERRO FILTER, MODEL 75, SERIAL NUMBER 7170, CS, RATED 300 PSI @ 80 DEGREES C, WITH 4" INLET & OUTLET, SAFETY LIGHT CURTAIN ON BOTH SIDES OF THE PRESS FRAME, MANUFACTURED BY GUARD SHIELD, WITH OPTICAL RANGE OF 3 TO 16 METERS, RUBBER BELT CONVEYOR FOR CAKE REMOVAL, SPRAY WASHER, AND ALLEN BRADLEY PLC CONTROLLER. OVERALL DIMENSIONS: 36'10" LONG X 5'10" WIDE X 9'8" HIGH.

CONTACT:

Louisiana Chemical Equipment Co., L.L.C

Tony Rojas. Cel: 3007070202 E-Mail: trojas@lcec.com

Joe O'Brien. Cel: 225-806-7781 E-Mail: jobrien@lcec.com

www.LCEC.com



NEW INVENTORY



102507 FILTERS



ADDITIONAL DESCRIPTION

50 CUBIC FOOT FILTER PRESS; 1200 MM POLY FILTER PLATES; BUILT IN 1996; MAX FEED PRESSURE 100 PSI; AIR SUPPLY PRESSURE 100 PSI; HYDRAULIC CLAMPING PRESSURE 3000 PSI; RELIEF PRESSURE 3400 PSI; PRESSURE TESTED TO 4900 PSI;

106122 TANKS



ADDITIONAL DESCRIPTION

#1 SILO TANK (3-C); MFG. BY WALKER STAINLESS IN 2004; 8'0" INSULATION WRAP O.D.; 21'10" OAL; MODEL VSHT; CARBON STEEL OUTER SHEATHING MOC; BOTTOM HEAD SUPPORT; 3 HP BOTTOM SIDE AGITATION; DOUBLE WALL WITH 3" INSULATION AND CS OUTER SHEATHING; 60.75" WIDE X 57.5" HIGH X 22" DEEP ACLOVE FACEPLATE WITH EXTENSION; NOZZLES: SIDES 16"X 20" MANWAY, .5", 1.25", 1.5", 2", 4", 6"; BOTTOM (2)3"; (2) TOP MOUNTED LIFTING LUGS;

106123 TANKS



ADDITIONAL DESCRIPTION

#2 SILO TANK (4-D); MFG. BY WALKER STAINLESS IN 2004; 8'0" INSULATION WRAP O.D.; 21'10" OAL; MODEL VSHT; CARBON STEEL OUTER SHEATHING MOC; BOTTOM HEAD SUPPORT; 3 HP BOTTOM SIDE AGITATION; DOUBLE WALL WITH 3" INSULATION AND CS OUTER SHEATHING; 60.75" WIDE X 57.5" HIGH X 22" DEEP ACLOVE FACEPLATE WITH EXTENSION; NOZZLES: SIDES 16"X 20" MANWAY, .5", 1.25", 1.5", 2", 4", 6"; BOTTOM (2)3"; (2) TOP MOUNTED LIFTING LUGS;

CONTACT:

Louisiana Chemical Equipment Co., L.L.C

Tony Rojas. Cel: 3007070202 E-Mail: trojas@lcec.com

Joe O'Brien. Cel: 225-806-7781 E-Mail: jobrien@lcec.com

www.LCEC.com



NEW INVENTORY



109026 WATER TREATMENT



ADDITIONAL DESCRIPTION

SEE DOCUMENTS FOR COMPLETE DESIGN SPECS.** MULTI-STAGE NANOFILTRATION SYSTEM: BUILT IN 2009; COMPLETE PACKAGED SYSTEM CONSISTING OF THE FOLLOWING: #V9201 TANK, 160 GALLONS, VERTICAL, 304 SANITARY STAINLESS STEEL; MFG. BY A & B PROCESS SYSTEMS; 2'6" DIA. X 4'4" T/T; DISHED HEADS; LEG SUPPORTS; ATM @ 248°F; 10 GA. SHELL WALL THK.; #P-9201 CENTRIFUGAL PUMP, 10 HP SANITARY PUMP; #P-9200-1 CENTRIFUGAL PUMP, 15 HP SANITARY PUMP; #P-9200-2 CENTRIFUGAL PUMP, 15 HP SANITARY PUMP; #P-9200-3 CENTRIFUGAL PUMP, 15 HP SANITARY PUMP; #P-9200-4 CENTRIFUGAL PUMP, 30 HP; #E-9200-1 EXCHANGER, MFG. BY ENERQUIP, HORIZONTAL, 316LSS SHELL & TUBE EXCHANGER; #E-9200-2 EXCHANGER, MFG. BY ENERQUIP, HORIZONTAL, 316LSS SHELL & TUBE EXCHANGER; #E-9200-3 EXCHANGER, MFG. BY ENERQUIP, HORIZONTAL, 316LSS SHELL & TUBE EXCHANGER; #E-9201 EXCHANGER; #X-9200-1,-2,-3 NANO FILTER HOUSING; MFG. GE WATER & PROCESS TECHNOLOGY; 26 GALLONS TOTAL VOLUME PER HOUSING; 11 GALLONS MAX FILLING PER HOUSING; 218 mm DIA. X 3300 mm O.A.L.; DESIGN PRESSURE 725FV PSIG MAX; 3" INLET & 3" OUTLET;

113071 BOILERS



ADDITIONAL DESCRIPTION

"As Is, Where Is" Cleaver Brooks Industrial Water Tube Boiler, Built in 2011. 9,088 sq. ft. Heat Surface.

110307 BOILERS



ADDITIONAL DESCRIPTION

BUILT IN 2009; 3618 SQ. FT. OUTLET STEAM CONDITIONS: CAPACITY 50,000 LB/HR; OPERATING PRESSURE 250 PSIG (AT EXIT ON NON-RETURN VALVE); SATURATED STEAM TEMPERATURE TO 406 DEG. F. @ 250 PSIG & 436 DEG. F. @ MAXIMUM 350 PSIG; STEAM PURITY 1 PPM TDS; BOILER DESIGN: D-TYPE INDUSTRIAL WATERTUBE; MODEL NB-300D-55; VESSEL DESIGN PRESSURE 350 PSIG; BURNER DESIGN: TYPE LOW-NOX REGISTER; MAIN FUEL NATURAL GAS; DESIGN PRESSURE 400 PSIG; INLET FEEDWATER TEMP 228 DEG. F.; STACK DESIGN: PACKAGE INCLUDES BOILER, BLOWER & CONTROLS;

CONTACT:

Louisiana Chemical Equipment Co., L.L.C

Tony Rojas. Cel: 3007070202 E-Mail: trojas@lcec.com

Joe O'Brien. Cel: 225-806-7781 E-Mail: jobrien@lcec.com

www.LCEC.com



NEW INVENTORY



X109780 BOILERS



ADDITIONAL DESCRIPTION

NATURAL GAS FIRED FIRE TUBE BOILER; BUILT IN 1991; 8,244 HOURS; 500 HP;

109025 PROCESS UNITS/LINES



ADDITIONAL DESCRIPTION

MOLECULAR SIEVE (SKIDDED DEHYDRATION SYSTEM); MFG. BY THERMAL KINETICS (SELF SUPPORTED MODULAR SYSTEM); THERMAL KINETICS ENGINEERING (TKE) ETHANOL DEHYDRATION SYSTEM IS DESIGNED TO PRODUCE DRY ETHANOL FOR THREE DIFFERENT OPERATING CONDITIONS. THE WET ETHANOL VAPOR STREAM CAN BE SUPPLIED AT 18, 42, AND 87 PSIA. THE BASIC PROCESS CONDITIONS FOR THE THREE CASES ARE AS FOLLOWS: 18 PSIA: 18.125 PSIA ADSORPTION PRESSURE, 0.9 PSIA REGENERATION PRESSURE (VACUUM), 320 DEG. F. ADSORPTION FEED TEMP, 419 LBS/HR FEED FLOW, 5 LBS/HR PURGE FLOW, 7 WT % FEED WATER CONTENT, 99.5 WT % 200 PROOF ETHANOL CONTENT; 42 PSIA: 42 PSIA ADSORPTION PRESSURE, 1.5 PSIA REGENERATION PRESSURE (VACUUM), 320 DEG. F. ADSORPTION FEED TEMP, 573.2 LBS/HR FEED FLOW, 7.5 LBS/HR PURGE FLOW, 9 WT % FEED WATER CONTENT, 99.7 WT % 200 PROOF ETHANOL CONTENT; 87 PSIA: 87 PSIA ADSORPTION PRESSURE, 3 PSIA REGENERATION PRESSURE (VACUUM), 320 DEG. F. ADSORPTION FEED TEMP, 573.2 LBS/HR FEED FLOW, 5 LBS/HR PURGE FLOW, 9 WT % FEED WATER CONTENT, 99.7 WT % 200 PROOF ETHANOL CONTENT; SYSTEM INCLUDES: #E-4601-1, 190 PROOF SUPERHEATER, SHELL & TUBE EXCHANGER, CS/304LSS/304LSS, 8" ID X 8'0", 40 SQ. FT., 280 LBS, SHELL DESIGN CONDITIONS 200 PSIG @ 400 DEG. F., TUBE DESIGN CONDITIONS 100 PSIG @ 380 DEG. F., MFG. BY PAGET EQUIPMENT, 36,400 BTU/HR; #V-4601, MOLECULAR SEIVE #1, ADSORPTION COLUMN, 304LSS, 18" OD X 16'0" OAH, 1,200 LBS, 100FV @ 600 DEG. F., MFG. BY PAGET EQUIPMENT, PACKED BED; #V-4602, MOLECULAR SEIVE #2, ADSORPTION COLUMN, 304LSS, 18" OD X 16'0" OAH, 1,200 LBS, 100FV @ 600 DEG. F., MFG. BY PAGET EQUIPMENT, PACKED BED; #E-4601-3, PURGE HEATER, SHELL & TUBE EXCHANGER, CS/304LSS/304LSS, 8" OD X 3'0", 12.3 SQ. FT., 250 LBS, SHELL DESIGN CONDITIONS 200 PSIG @ 400 DEG. F., TUBE DESIGN CONDITIONS 100 PSIG @ 380 DEG. F., MFG. BY PAGET EQUIPMENT, 4,200 BTU/HR; #Q-4601, PRODUCT FILTER, CARTRIDGE FILTER, 304LSS, 4" OD X 2'0" OAH, 24 LBS, 150 PSIG @ 392 DEG. F., MFG. BY DONALDSON FILTRATION, #E-4601-2, REGENERATION VAPOR CONDENSER, SHELL & TUBE EXCHANGER, 304LSS/304LSS/304LSS, 14" OD X 5'0", 100.6 SQ. FT., 1,000 LBS, SHELL DESIGN CONDITIONS 100 PSIG @ 200 DEG. F., TUBE DESIGN CONDITIONS 100 PSIG @ 400 DEG. F., MFG. BY PAGET EQUIPMENT, 1.1 BTU/HR; #V-4603, REGENERATION CONDENSATE TANK, VERTICAL TANK, 304LSS, 18" OD X 4'0", 200 LBS, 100 PSIG # 300 DEG. F., MFG. BY PAGET EQUIPMENT, 55 GALLONS; #P-4603-1, REGENERATION CONDENSATE PUMP, GEAR PUMP, 304LSS, 88 LBS, 200 PSIG @ 150 DEG. F., MFG. BY PULSA FEEDER, 2.5 GPM @ 110 PSIG, 1 HP; #P-4603-2, VACUUM PUMP, LIQUID RING, 304LSS, 1,400 LBS, MFG BY TUTHILL KINNEY, 7.5 HP; #B-4603, VACUUM BOOSTER, BLOWER, DUCTILE IRON, MFG. BY TUTHILL KINNEY, 5 HP; #E-4603, SEAL FLUID COOLER, SHELL & TUBE EXCHANGER, 304LSS, 5" OD X 2'0", 15.7 SQ. FT., SHELL DESIGN CONDITIONS 225 PSIG @ 450 DEG. F., TUBE DESIGN CONDITIONS 150 PSIG @ 450 DEG. F., MFG. BY ITT STANDARD; #V-4604, SEPARATOR, VERTICAL TANK, 304LSS, 12" OD X 1'8", 15 PSIG, MFG. BY TUTHILL KINNEY, 11 GALLONS; #P-4603-3, SEAL FLUID OVERFLOW PUMP, HOSE PUMP, 304LSS, 220 LBS, 232 PSIG @ 175 DEG. F., MFG. BY WATSON MARLOW, 2.5 GPM; OVERALL SKID DIMENSIONS: 10' WIDE X 10' WIDE X 30' TALL; OVERALL SKID WEIGHT 24,000#;

CONTACT:

Louisiana Chemical Equipment Co., L.L.C

Tony Rojas. Cel: 3007070202 E-Mail: trojas@lcec.com

Joe O'Brien. Cel: 225-806-7781 E-Mail: jobrien@lcec.com

www.LCEC.com



NEW INVENTORY



108893 GENERATORS



ADDITIONAL DESCRIPTION

1800 RPM; 60 HERTZ; GEN. FRAME #687; GEN. PART #8L10; 3 PHASE TO WIRE STANDBY RATING: 938 KVA, 750 KW, .8 POWER FACTOR; LOW CONNECTION 125/216 VOLTS, 2506 AMPS; LOW CONNECTION 230 VOLTS, 2353 AMPS; HIGH CONNECTION 460 VOLTS, 1177 AMPS; ENGINE: MODEL #D349, 16 CYLINDERS, 5.4 BORE, 6.5 STROKE, S/N 61P752, ARRANGEMENT #8L8223, HIGH IDLE RPM 1800, FULL LOAD RPM 1800, FUEL SETTING .670;

106115 GENERATORS



ADDITIONAL DESCRIPTION

UNUSED; CONVERTEAM 10,400 KVA SYNCHRONOUS AC GENERATORS; 4160 VOLTS; 60 HZ; 3 PHASE; BUILT IN 2012; FRAME #A118W4;

109048 BLENDERS



ADDITIONAL DESCRIPTION

PADDLE BLENDER; SHELL RATING 200FV @ 400 DEG. F.; BUILT IN 2009; EQUIPMENT TYPE CFPB-044;

CONTACT:

Louisiana Chemical Equipment Co., L.L.C

Tony Rojas. Cel: 3007070202 E-Mail: trojas@lcec.com

Joe O'Brien. Cel: 225-806-7781 E-Mail: jobrien@lcec.com

www.LCEC.com



NEW INVENTORY



109027 BLENDERS



ADDITIONAL DESCRIPTION

LOSS OF WEIGHT HOPPER #1; DOUBLE PADDLE BLENDER; BUILT IN 2009; 72" LONG X 48" HIGH X 42" WIDE; 119" O.A.L.; SANITARY POLISHED 304LSS CONTACT PARTS; SHELL RATING ATM @ 212 DEG. F.; 20 RPM ROTOR RATING; HORIZONTAL WITH BOTTOM DISCHARGE;

93131 CENTRIFUGES



ADDITIONAL DESCRIPTION

DI-PE SECONDARY CENTRIFUGE; (1) 25 HP BACK DRIVE @ 3600 RPM; 460 VOLT & (1) 50 HP MAIN DRIVE; 3600 RPM MAX; 480 VOLTS; BUILT IN 2000; CONTINUOUS TYPE; 10 DEG. CONE; LEFT HAND ROTATION;

108270 TANKS



ADDITIONAL DESCRIPTION

PREVIOUSLY UTILIZED IN VITAMIN "C" PRODUCTION; STAGE #2 CONTINUOUS CRYSTALLIZER; MFG. BY BRIGHTON; DIAMETER TOP 9'0", BOTTOM 7'0"; LENGTH TOP 2'0", BOTTOM 17'0"; DIMPLE TYPE JACKET ON SHELL O.D. & BOTTOM HEAD & 4" O.D. SCH 10 INTERNAL COILS (12) TURNS @ 8.25" PITCH; (4) LUG SUPPORTS; TOP 1/4" WALL THICKNESS; 25 HP LIGHTNIN MODEL #86-S-25 AGITATOR; 4.5"/3.5" DIA. SHAFT; 50" BLADE SPAN; (4) INTERNAL SIDE WALL BAFFLES;

CONTACT:

Louisiana Chemical Equipment Co., L.L.C

Tony Rojas. Cel: 3007070202 E-Mail: trojas@lcec.com

Joe O'Brien. Cel: 225-806-7781 E-Mail: jobrien@lcec.com

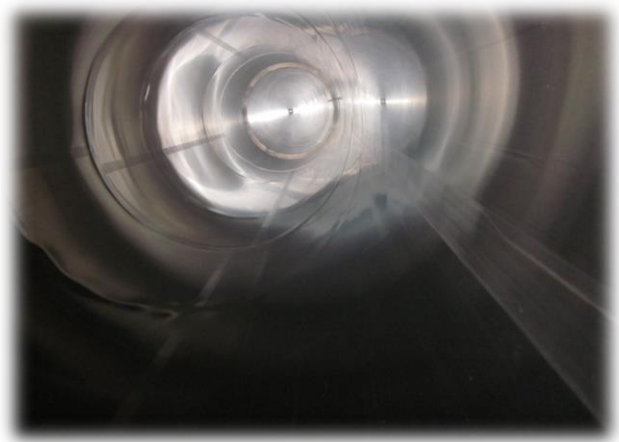
www.LCEC.com



NEW INVENTORY



106127 TANKS



ADDITIONAL DESCRIPTION

WHEY TANK #2 (20-T); MFG. BY WALKER STAINLESS IN 2006; 6'0" INSULATION WRAP O.D.; 37'3" OAL; MODEL VSHT; 304SS OUTER SHEATHING MOC; BOTTOM HEAD SUPPORTS; ; DOUBLE WALL WITH OUTER INSULATION SHEATHING; 60.75" WIDE X 57.5" HIGH X 22" DEEP ACLOVE FACEPLATE WITH EXTENSION; NOZZLES: SIDES 16"X 20" MANWAY, 10" MOTOR MOUNT .5", 1.25", 1.5", (3)3", (4)4", BOTTOM 4"; (2) TOP MOUNTED LIFTING LUGS;

106129 TANKS



ADDITIONAL DESCRIPTION

MFG. BY DELAVAL; 11-K; ON LEGS; DOUBLE WALL WITH OUTER CS INSULATION SHEATHING;

CONTACT:

Louisiana Chemical Equipment Co., L.L.C

Tony Rojas. Cel: 3007070202 E-Mail: trojas@lcec.com

Joe O'Brien. Cel: 225-806-7781 E-Mail: jobrien@lcec.com

www.LCEC.com