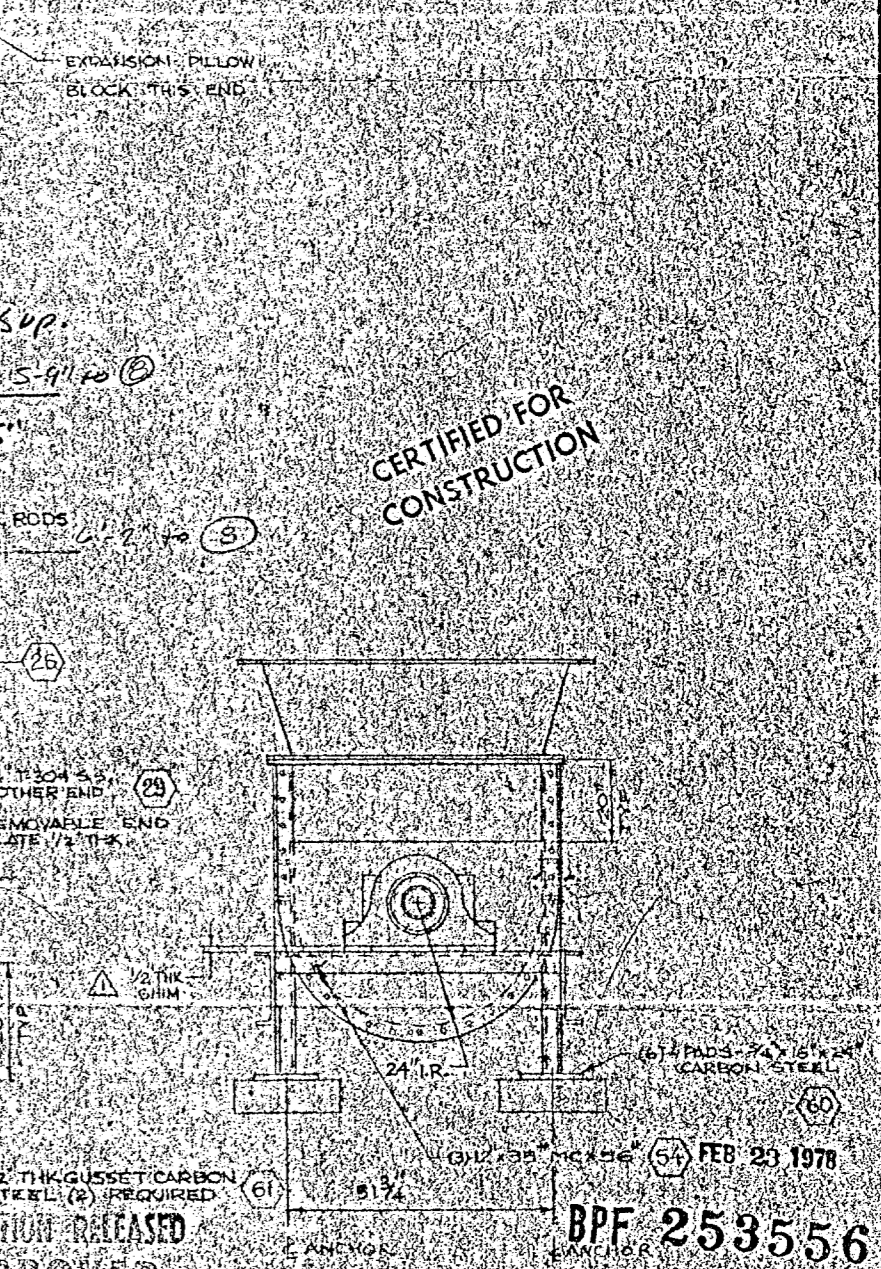
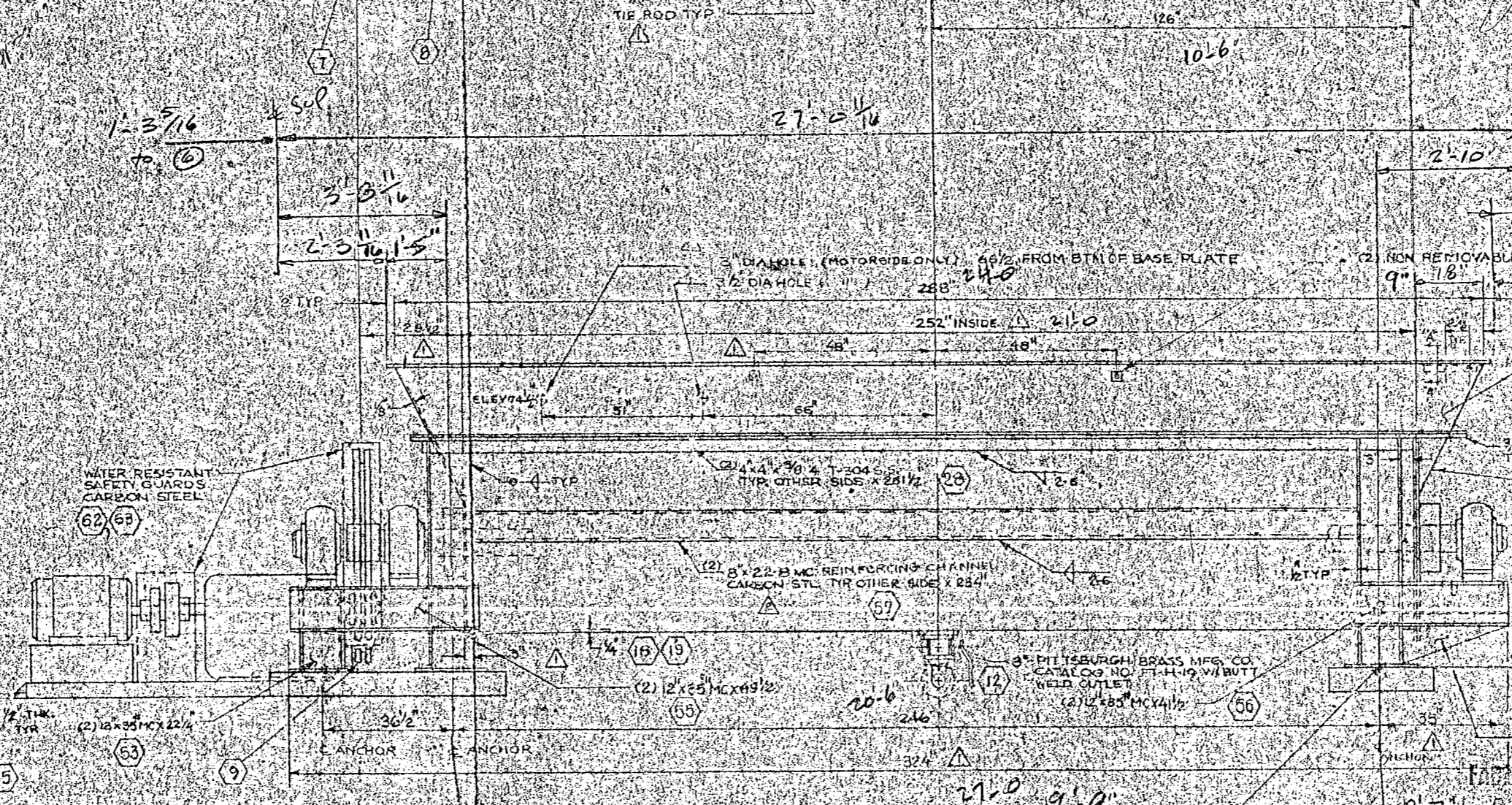
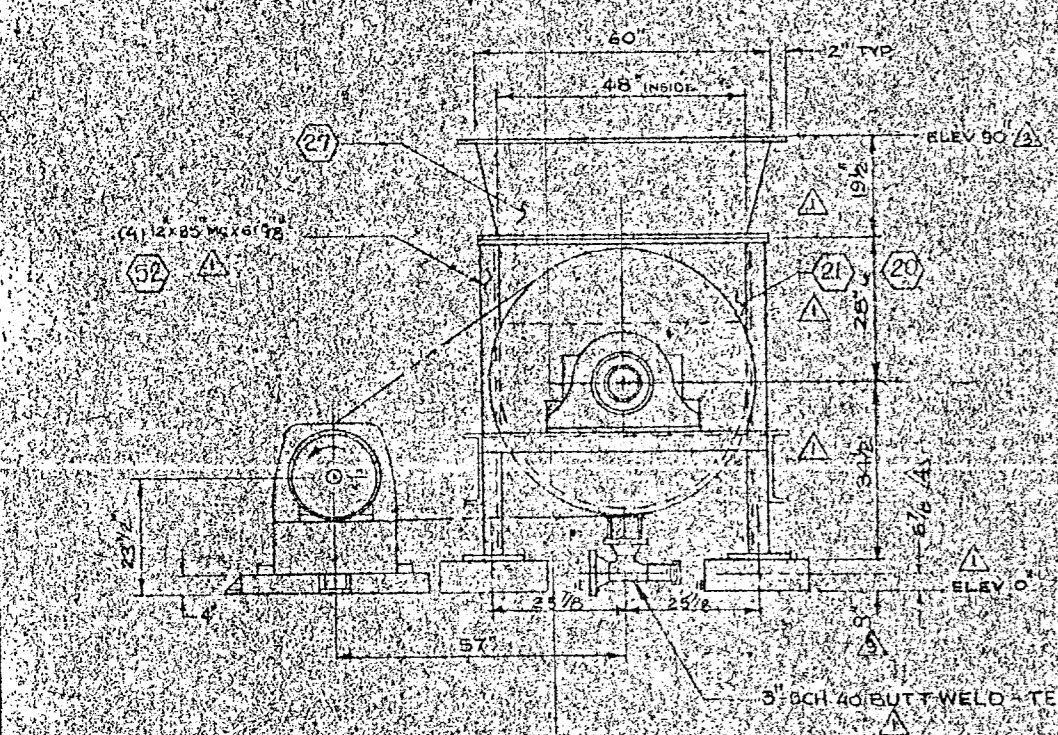
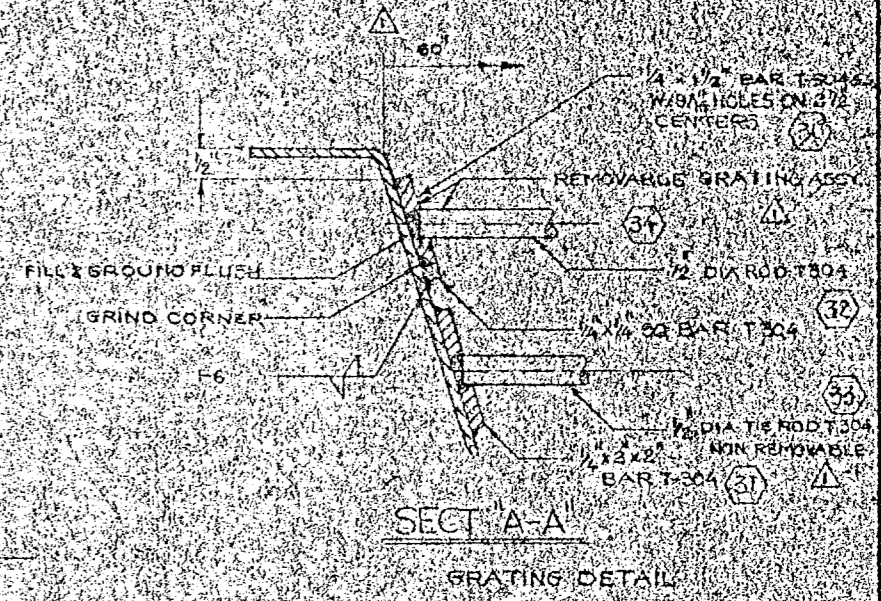


PARTS LIST - DRIVE		
ITEM NO.	QTY.	DESCRIPTION
1	1	MOTOR - BILLANCE 80/60/230/460 TFC 75 H.P. @ 1800 RPM FRAME 365 (BY DUPONT)
2	1	BLENDING COUPLER - DODGE SIE 1810 TAPER LOCK FLANGE (6.374 HGT)
3	1	CONCENTRIC SHAFT REDUCER - DODGE TM SIEE 1000 RATIO 25.6311 RATED 131 H.P. @ 1150 RPM INPUT 65 RPM OUTPUT
4	1	SPROCKET - MARTIN CAT. NO. D200B10 M. 397 P.D. 5 7/8" BORE W/2 SET SCREWS
5	22 FT.	CHAIN - MORSE NO. 200-2 GOTT. ROLLER CHAIN DOUBLE STRAND
6	3	PILLOW BLOCKS - DODGE DOUBLE INTERLOCK FOR 5 7/8" SHAFT (1 EXPANSION, 2 NON-EXPANSION)
7	1	SPROCKET - MARTIN CAT. NO. D200C60 47.768" P.D. 5 7/8" BORE W/2 SET SCREWS
8	2	PACKING GLAND - EXPERT INDUSTRIES INC. STD. FOR 5 7/8" SHAFT
9	1	SLACK SLIDE TENSIONER - MURRY STOCK SIZE #1 B



- GENERAL NOTES:
- ALL MATERIAL TO BE T-304 S.S. UNLESS OTHERWISE NOTED.
  - BLENDER SHALL BE LIQUID TIGHT.
  - GASKETS MATERIAL SHALL BE "BUNA-N".
  - INTERNAL TROUGH WELDS/GROUND SMOOTH TRANSITION WELDS CLEAN ONLY.
  - BOLTS AND NUTS SHALL BE STAINLESS STEEL.
  - SUPPORTS & STIFFENERS SHALL BE CARBON STEEL.
  - ALL CARBON STEEL SURFACES TO BE PAINTED AS PER DUPONT PAINTING SYSTEM IIIA.
  - WELDS SHALL ONLY CLEAN VERTICAL PORTION OF TROUGH ENDS.
  - WEIGHT OF UNIT EMPTY WITH DRIVE TRANSMISSION 16,640 LBS.
  - COUNTER CLOCKWISE ROTATION FROM DRIVE END.

REVISIONS			
NO.	DESCRIPTION	BY	DATE
5	ADDED CENTERLINE FOR ANCHORS	TR-2	7/18/78
4	REVISED ELEV. DR. G. OF VALVE DUE TO CHANGE IN ELEV. AS PER REV. 3	S.D.	7/12/78
3	CHANGED ELEV. AS PER CUSTOMER REQUEST	S.D.	7/12/78
2	REVISED PER CUSTOMER COMMENT MC BY 22.81 WAS MC BY 25.41	R.B.	7/10/78
1	REVISED AS PER CUSTOMER COMMENTS	TR-2	7/10/78
0	ISSUE FOR APPROVAL	TR-2	7/10/78

APPROVED FOR GENERAL CONTRACTOR TO DIMENSIONS AND MATERIALS SPECIFIED BY DU PONT FOR THIS ORDER  
 E. I. DU PONT DE NEMOURS & CO.

EXPERT INDUSTRIES INC. BROOKLYN, N. Y.		
FILTER CAKE REPULPER T-304 S.S. ASSEMBLY DWG.		
FOR: E. I. DU PONT DE NEMOURS CO., INC.		
DR. BY: RGI	JOB NO: 3474	DWG. NO: 1
DATE: 4-27-77	SCALE: 1/2" = 1'-0"	REV: 1

# 73709