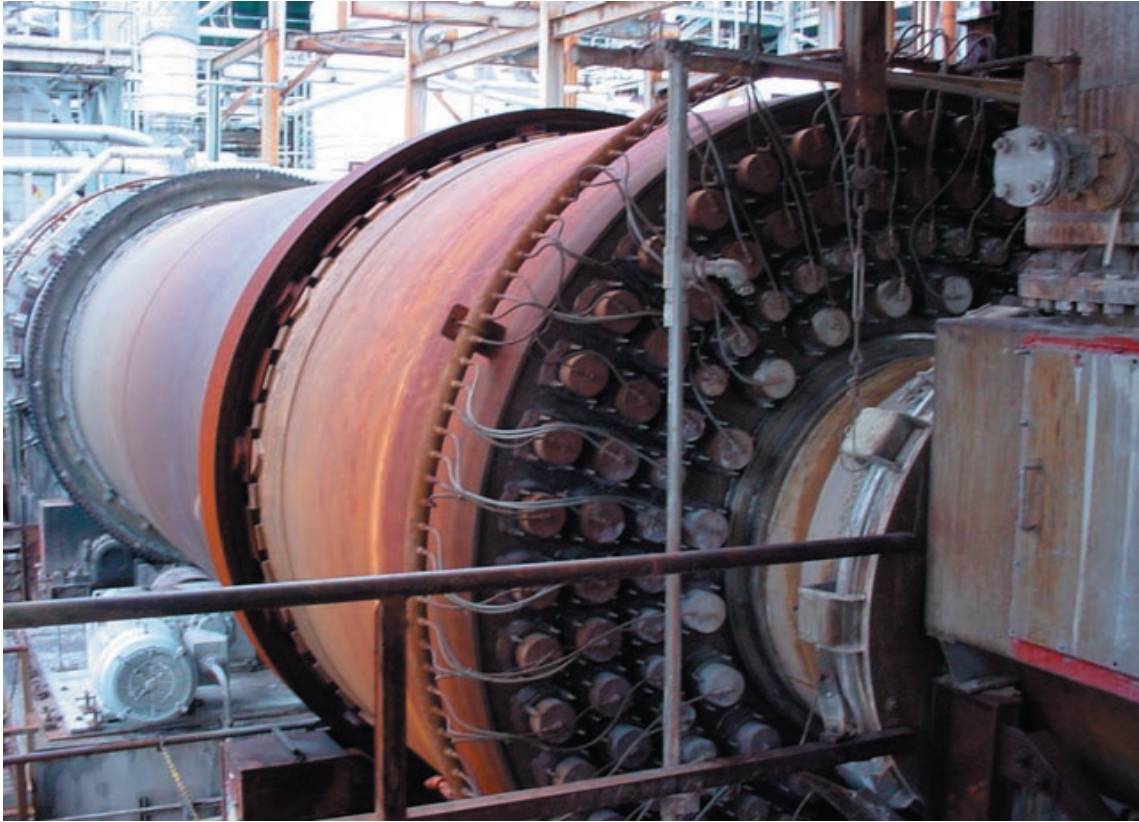




# Louisiana Chemical Equipment Co. Featured Item For Sale

[www.LCEC.com](http://www.LCEC.com)

Please click on the item number for item details



**86985**

Rotary steam tube dryer; 9'6" diameter x 40' length, 250 psi @ 450°F;  
shell material 316LSS; internal material 317LSS;  
manufactured by Davenport; built in 1995.

**LCEC is always looking for quality used equipment. Contact us immediately if you have any surplus equipment, complete plants or processes for sale.**

**P.O. BOX 1490 • LA PORTE, TX 77571  
281-471-4900 -OR- 866-289-5232  
EMAIL - SALES@LCEC.COM  
WEBSITE - [www.LCEC.com](http://www.LCEC.com)**