

FORM U-1A MANUFACTURERS' DATA REPORT FOR UNFIRED PRESSURE VESSELS 86618  
 Alternate Form for Single Chamber Completely Shop-Fabricated Vessels Only S.O. 106-36046

1. Manufactured by BLAW-KNOX COMPANY, Food & Chemical Equipment Division, Buffalo, N.Y.  
(Name and address of Manufacturer)

Manufactured for MONSANTO COMPANY, ST. LOUIS, MISSOURI  
(Name and address of Purchaser)

3. Type Horizontal Vessel No. (17081) (        ) Natl. Bd. No. 7595 Yr. Built 1970  
(Horiz. or Vert.) (Fig. Qual. (Mfr. Serial) (State & State No.))

4. SHELL: Matl. SA-285 GR.C T.S. 55,000 Nom. Thk. 1/2 In. Corr. Allow. 1/16 In. Diam. 4 Ft. 0 In. Length 6 Ft. 0 In.  
(Kind and Spec. No.) (Fig. or F.B. & Spec. Min. T.S.)

5. SEAMS: Long Dbl. Butt H.T. YES X.R. Complete Sectioned NO Efficiency 100 %  
(Welded, Dbl., Single, Lap, Butt) (Yes or No) (Spot or Complete) (Yes or No)

Girth        H.T.        X.R.        Sectioned        No. of Courses 1  
Firebox Qual.

If riveted or brazed describe seams fully under remarks.

6. HEADS: (a) Material SA-515 GR. 70 T.S. 70,000 (b) Material        T.S.         
Location (Top, bottom, ends) Thickness Crown Radius Knuckle Radius Elliptical Ratio Conical Apex Angle Hemispherical Radius Flat Diameter Side to Pressure (Convex or Concave)

(a) Ends 2-1/4" 47"

(b)                       
 If removable, bolts used        Other fastening Heads welded to shell  
(Material, Spec. No., T.S., Size, Number) (Describe or Attach Sketch)

7. Constructed for max. allowable working press. 60 psi at max. temp. 650 °F. Min. temp. (when less than -20°)        °F. Hydrostatic        or Pneumatic or Combination Test Press 90 psi.

8. SAFETY OR RELIEF VALVE OUTLETS: Number        Size        Location       

9. NOZZLES:

Purpose (Inlet, Outlet, Drain)	Number	Diam. or Size	Type	Material	Thickness	Reinforcement Material	How Attached

10. INSPECTION MANHOLES, No.        Size        Location       

OPENINGS: Handholes, No. 2 Size 6" dia. Location One in each head.  
 Threaded, No.        Size        Location       

11. SUPPORTS: Skirt NO Lugs        Legs        Other Trunnions Attached Welded in each head.  
(Yes or No) (Number) (Number) (Describe) (Where & How)

12. REMARKS: FLAKER DRUM  
Cooling Water - Interior  
Product - Exterior

Ultimate Destination: Monsanto Company, Sauget, Illinois

(Brief description of purpose of the vessel as Air Tank, Water Tank, L.P.G., Etc.—State Contents. List other internal or external pressures with coincident temperature when applicable.)

We certify that the statements made in this report are correct and that all details of design, material, construction, and workmanship conform to the ASME Code for Unfired Pressure Vessels.

Date 1/31/70 19        Signed BLAW-KNOX COMPANY By P. Dora  
(Manufacturer)

Certificate of Authorization Expires #2231 December 31, 1970

**CERTIFICATE OF SHOP INSPECTION**

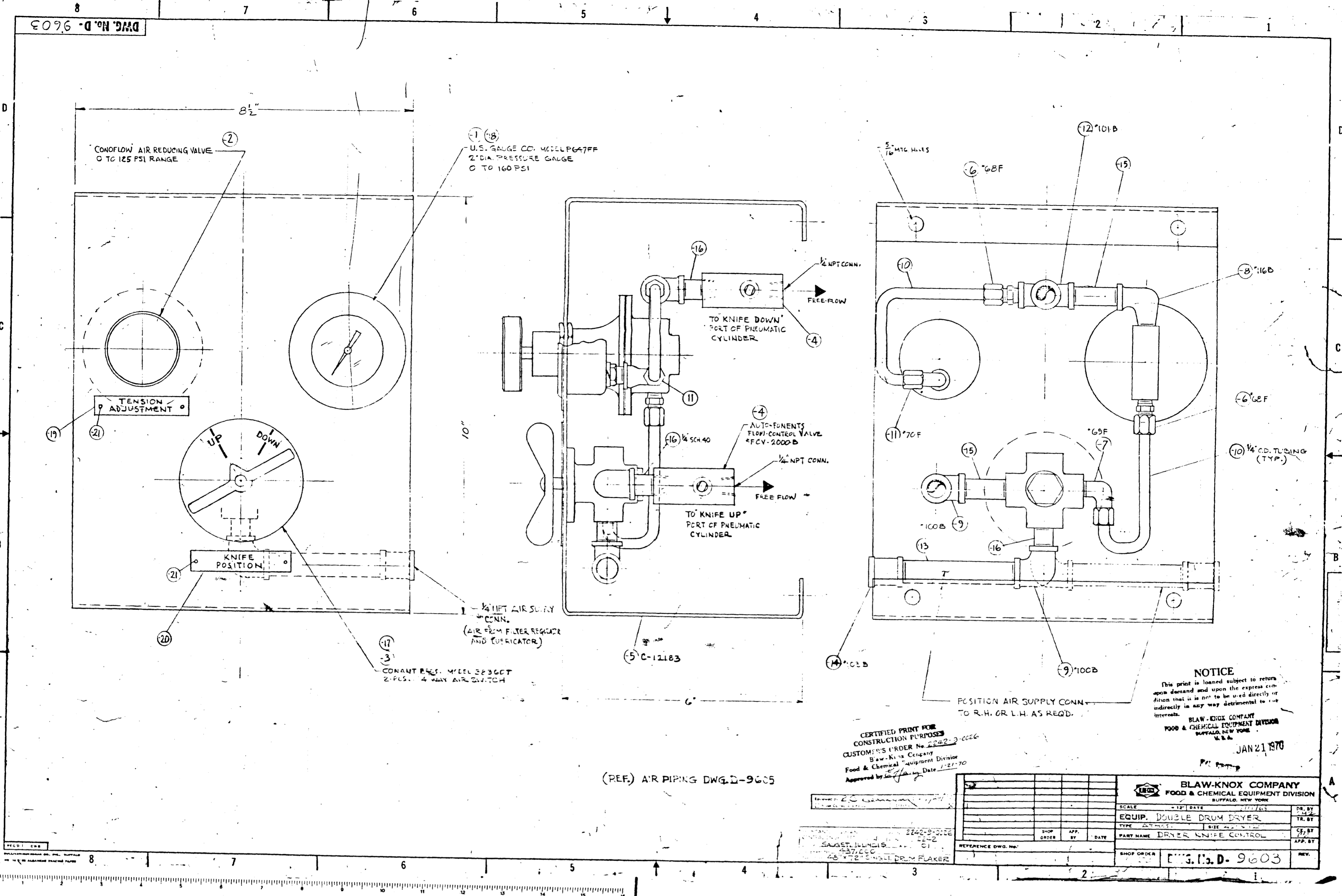
**T-6258** BLAW-KNOX COMPANY  
 VESSEL MADE BY Food & Chemical Equipment Division at Buffalo, New York

I, the undersigned, holding a valid commission issued by the National Board of Boiler and Pressure Vessel Inspectors and/or the State of New York and employed by Travelers Indemnity Co. of Hartford, Connecticut have inspected the pressure vessel described in this manufacturer's data report on        19       , and state that to the best of my knowledge and belief, the manufacturer has constructed this pressure vessel in accordance with the applicable sections of the ASME Boiler and Pressure Vessel Code.

By signing this certificate neither the Inspector nor his employer makes any warranty, expressed or implied, concerning the pressure vessel described in this manufacturer's data report. Furthermore, neither the Inspector nor his employer shall be liable in any manner for any personal injury or property damage or a loss of any kind arising from or connected with this inspection.

Date Feb 13 19         
 Inspector's Signature [Signature] Commission NB 5886 National Board or State and No.

MONSANTO COMPANY  
 CENTRAL ENGR. DESIG.  
 2242  
 2242  
 2242

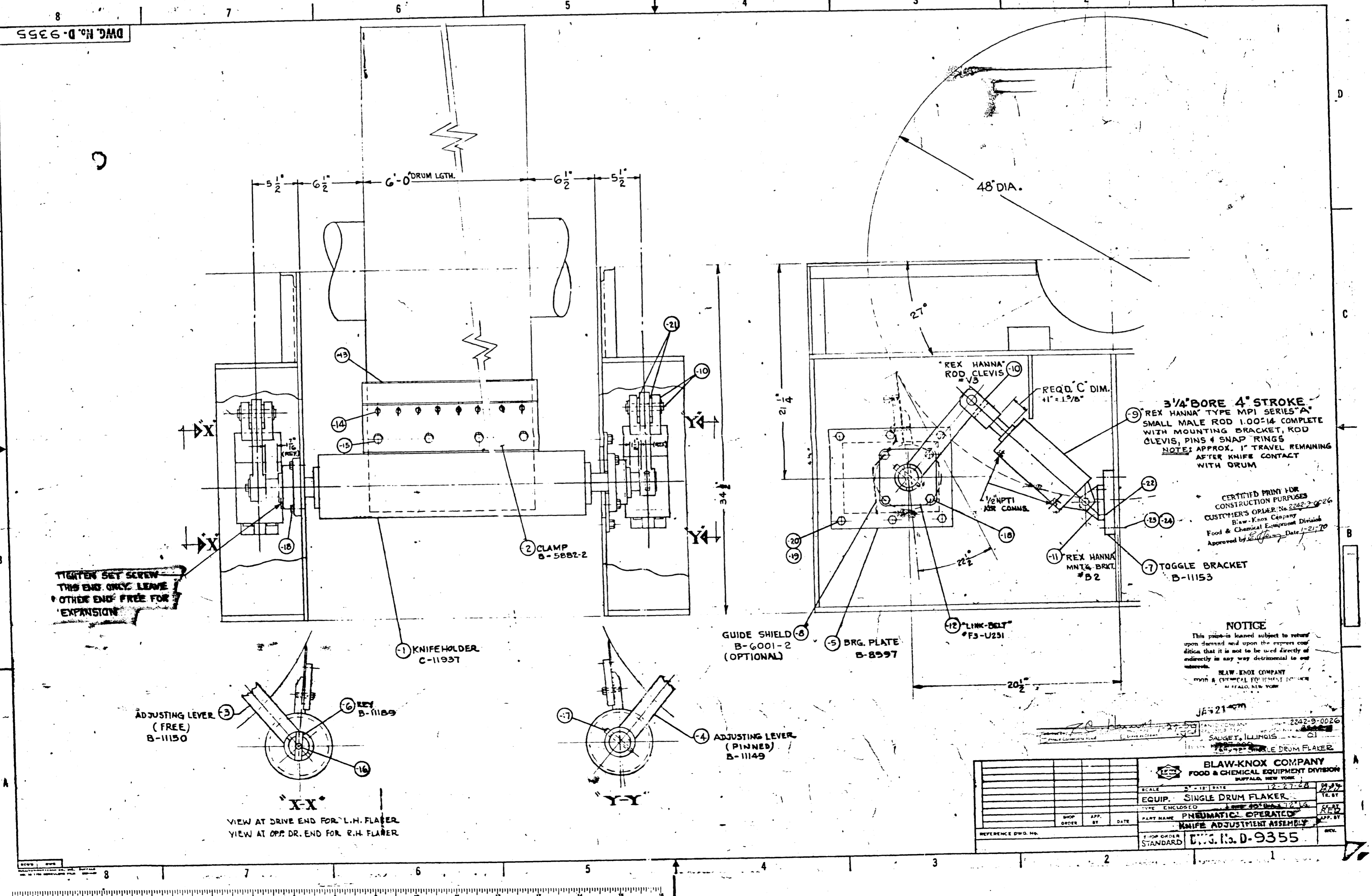


(REF.) AIR PIPING DWG. D-9605

CERTIFIED PRINT FOR CONSTRUCTION PURPOSES  
 CUSTOMER'S ORDER No. 2242-9-0026  
 Blaw-Knox Company  
 Food & Chemical Equipment Division  
 Approved by [Signature] Date 1/21/70

**NOTICE**  
 This print is loaned subject to return upon demand and upon the express condition that it is not to be used directly or indirectly in any way detrimental to the interests of  
 BLAW-KNOX COMPANY  
 FOOD & CHEMICAL EQUIPMENT DIVISION  
 PITTSBURGH, PA. U.S.A.  
 JAN 21 1970

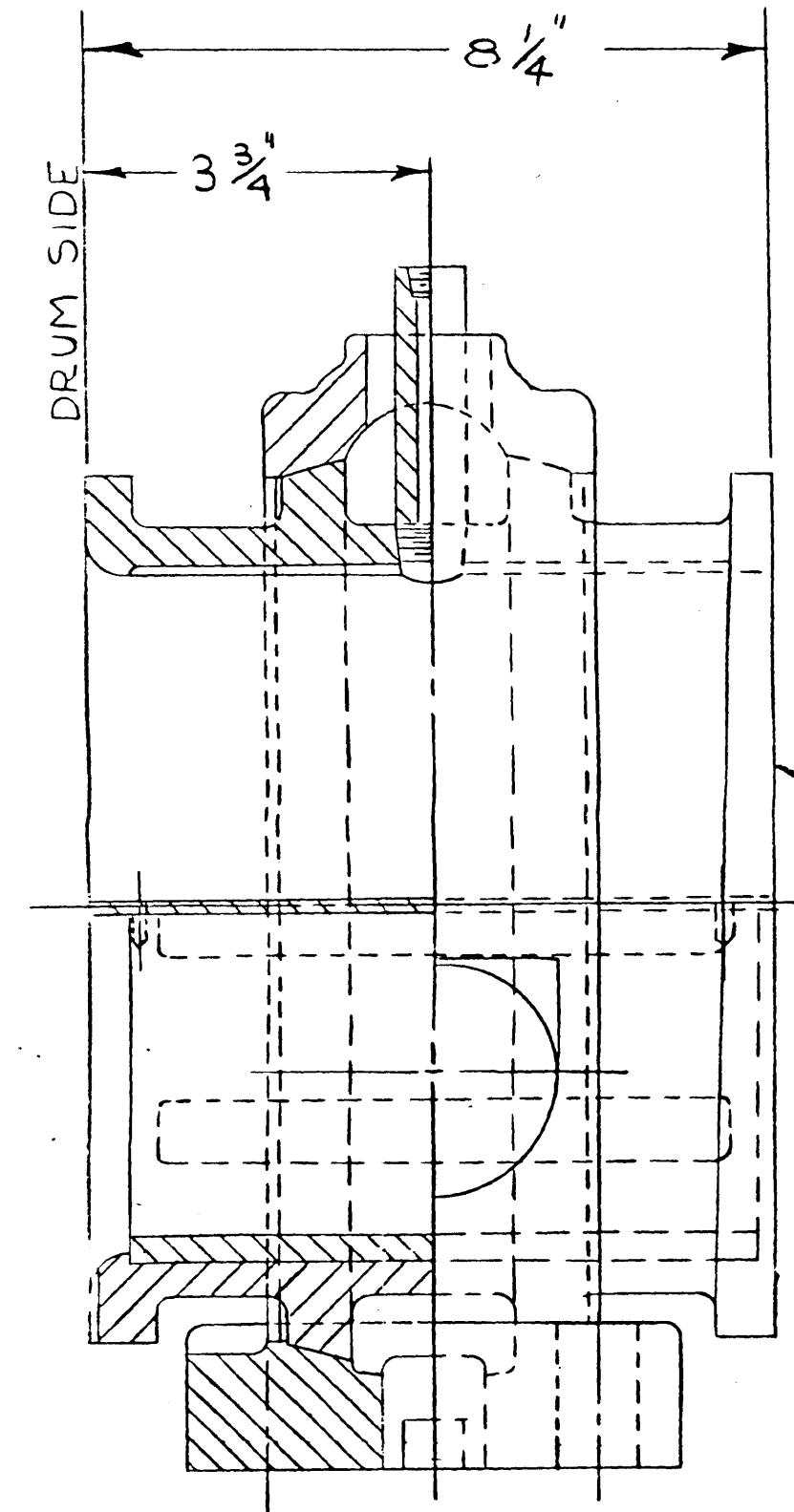
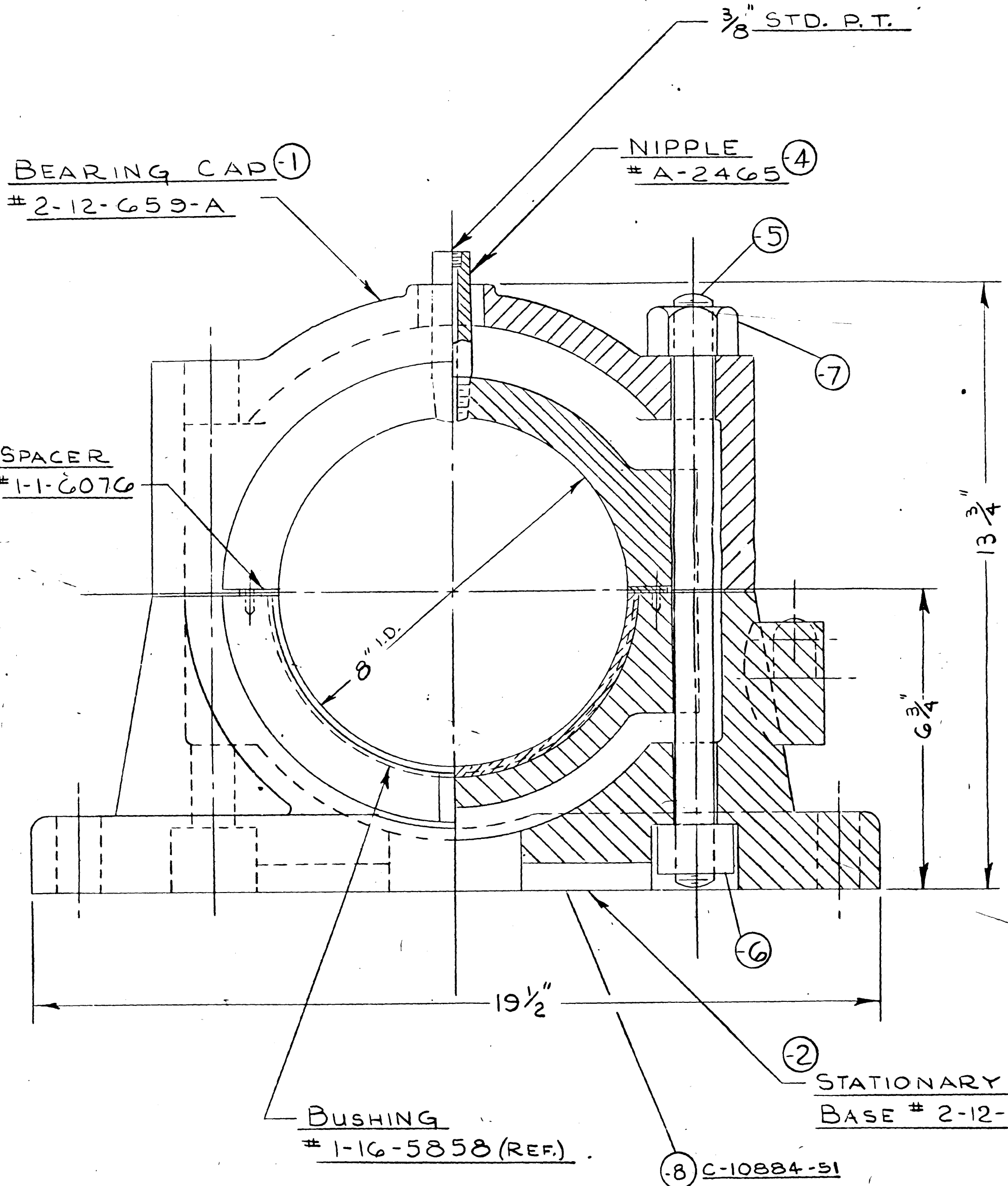
BLAW-KNOX COMPANY FOOD & CHEMICAL EQUIPMENT DIVISION PITTSBURGH, PA. U.S.A.	
EQUIP. DOUBLE DRUM DRYER	DR. BY
TYPE MOUNTING BRACKET, ROD CLEVIS, PINS & SNAP RINGS	TR. BY
PART NAME DRYER KNIFE CONTROL	ST. BY
SHOP ORDER BY DATE	APP. BY
REFERENCE DWG. NO.	REV.
DWG. NO. D-9603	



**NOTICE**  
 This print is loaned subject to return upon demand and upon the express condition that it is not to be used directly or indirectly in any way detrimental to the interests of  
 BLAW-KNOX COMPANY  
 FOOD & CHEMICAL EQUIPMENT DIVISION  
 PITTSBURGH, PA. U.S.A.  
 JAN 21 1970

BLAW-KNOX COMPANY FOOD & CHEMICAL EQUIPMENT DIVISION PITTSBURGH, PA. U.S.A.	
EQUIP. SINGLE DRUM FLAKER	DR. BY
TYPE ENCLOSED	TR. BY
PART NAME PNEUMATIC OPERATOR	ST. BY
SHOP ORDER BY DATE	APP. BY
REFERENCE DWG. NO.	REV.
DWG. NO. D-9355	

86618



3 BEARING SLEEVE  
DWG # 2-12-2938-50

CERTIFIED PRINT FOR CONSTRUCTION PURPOSES  
CUSTOMER'S ORDER No. 2242-2-0026  
Blaw-Knox Company  
Food & Chemical Equipment Division  
Approved by [Signature] Date 1-21-70

NOTICE  
This print is loaned upon demand and upon the express condition that it is not to be used directly or indirectly in any way detrimental to our interests.  
BLAW-KNOX COMPANY  
FOOD & CHEMICAL EQUIPMENT DIVISION  
BUFFALO, NEW YORK

50 COMPLETE BRG. ASS'Y.

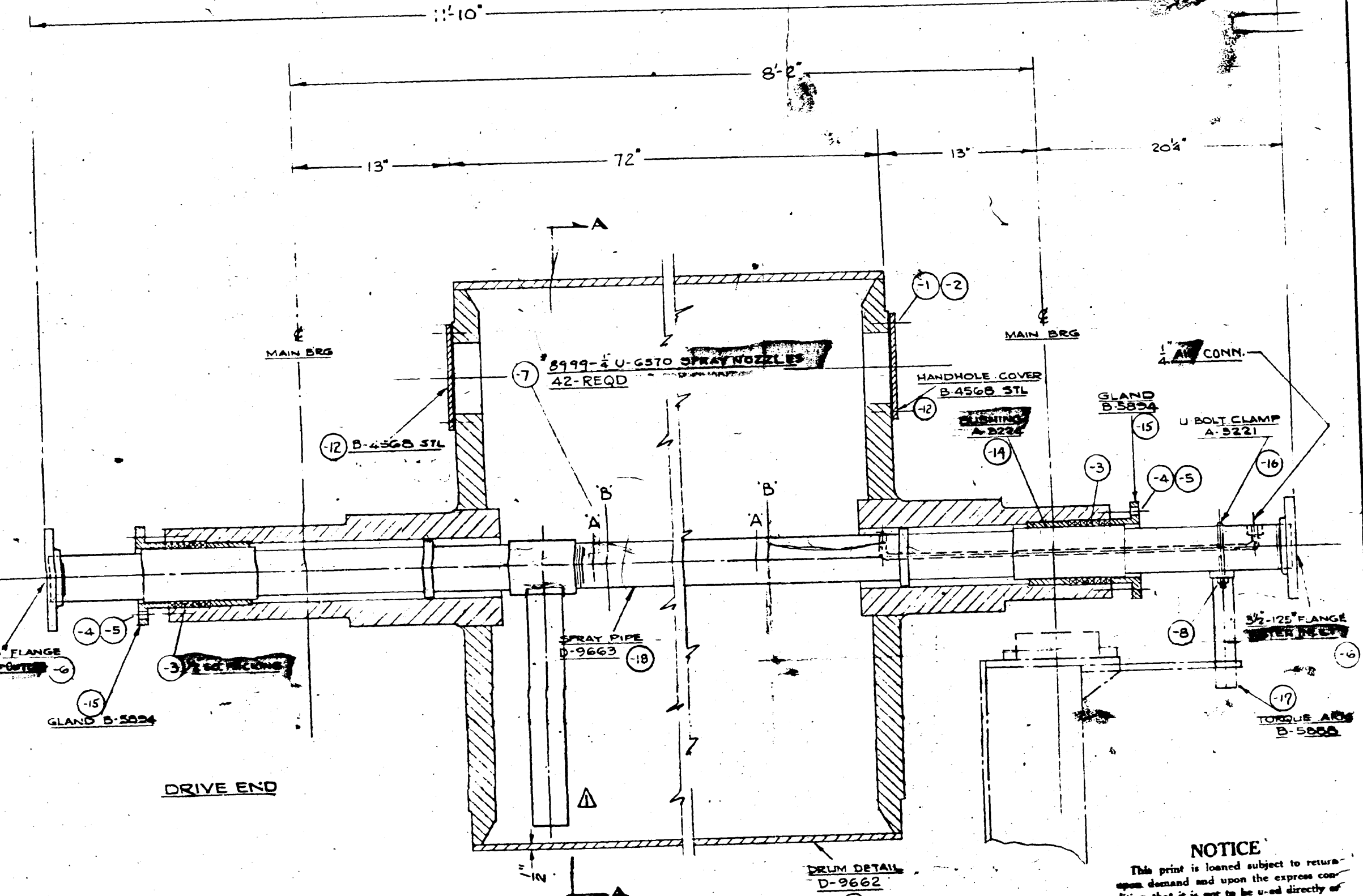
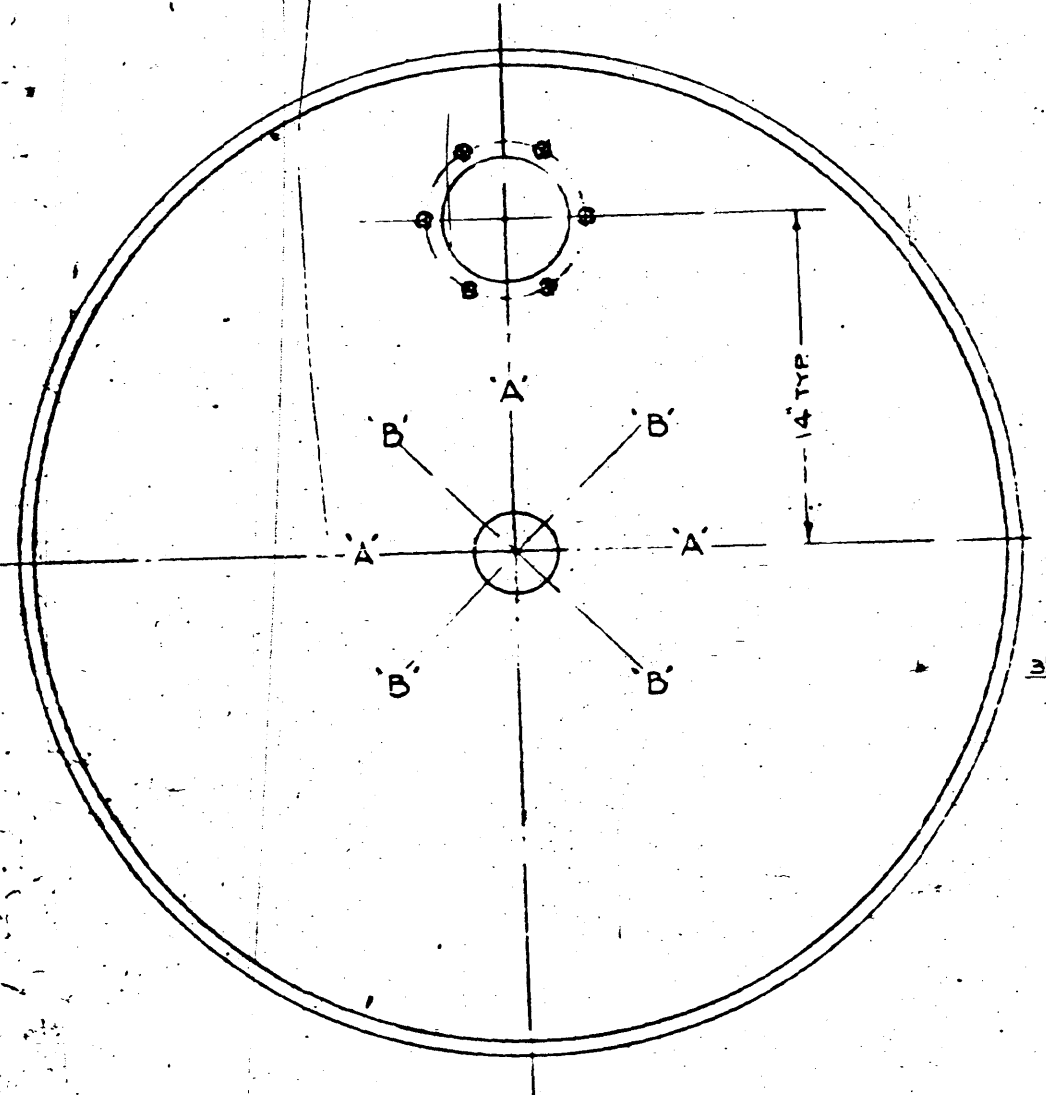
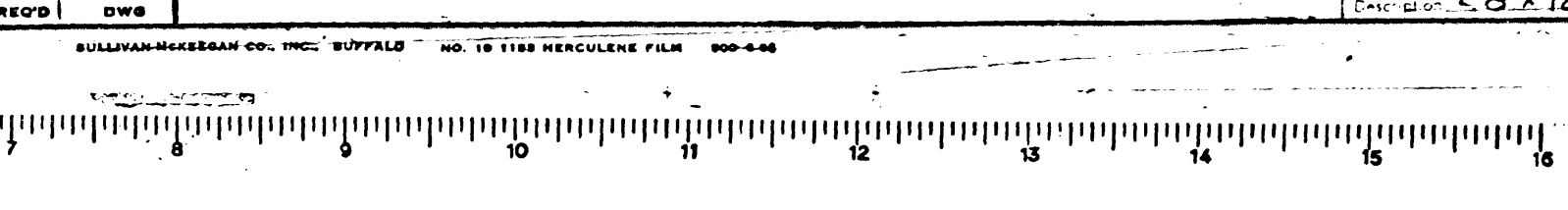
51 CAP & BASE ONLY

JAN 21 1970

Reviewed by: R.C. [Signature] Date 1/29/70  
 Make Corrections noted  Leave as Shown  Final

MONSANTO COMPANY  
CENTRAL ENGR. DEPT.  
Local: SAUGET, ILLINOIS Area: 01  
Equipment No. 437,800  
Description: 8'x12" SINGLE DRUM FLAKER

BLAW-KNOX COMPANY FOOD & CHEMICAL EQUIPMENT DIVISION BUFFALO, NEW YORK		SCALE: 6" = 12" DATE: 1/17/70	DR. BY: D.N.D.
EQUIP. DOUBLE DRUM DRYER		TYPE: SIZE 42" DIA.	TR. BY:
SHOP ORDER: STANDARD	APP. BY: [Signature]	PART NAME: 8" STAT. MAIN BRG. ASSEMBLY	AP. BY:
REFERENCE DWG. No.	DATE: 1/21/70	SHOP ORDER: DWG. No. C-10884	



$\frac{71 \times 10^2}{4} = 50$

NOTICE  
This print is loaned subject to return upon demand and upon the express condition that it is not to be used directly or indirectly in any way detrimental to our interests.  
BLAW-KNOX COMPANY  
FOOD & CHEMICAL EQUIPMENT DIVISION  
BUFFALO, NEW YORK

CERTIFIED PRINT FOR CONSTRUCTION PURPOSES  
CUSTOMER'S ORDER No. 2242-2-0026  
Blaw-Knox Company  
Food & Chemical Equipment Division  
Approved by [Signature] Date 1-21-70

BLAW-KNOX COMPANY BUROVAK EQUIPMENT DIVISION		SCALE: 1" = 12" BUFFALO, N.Y. 11-25-69	DR. BY: [Signature]
EQUIP. SINGLE DRUM FLAKER		TYPE: SIZE 48" DIA. x 72"	TR. BY:
SHOP ORDER: STANDARD	APP. BY: [Signature]	PART NAME: TOPLINE ASSEMBLY	AP. BY:
REFERENCE DWG. No. D-9664	DATE: 1/21/70	SHOP ORDER: DWG. No. D-9664	

