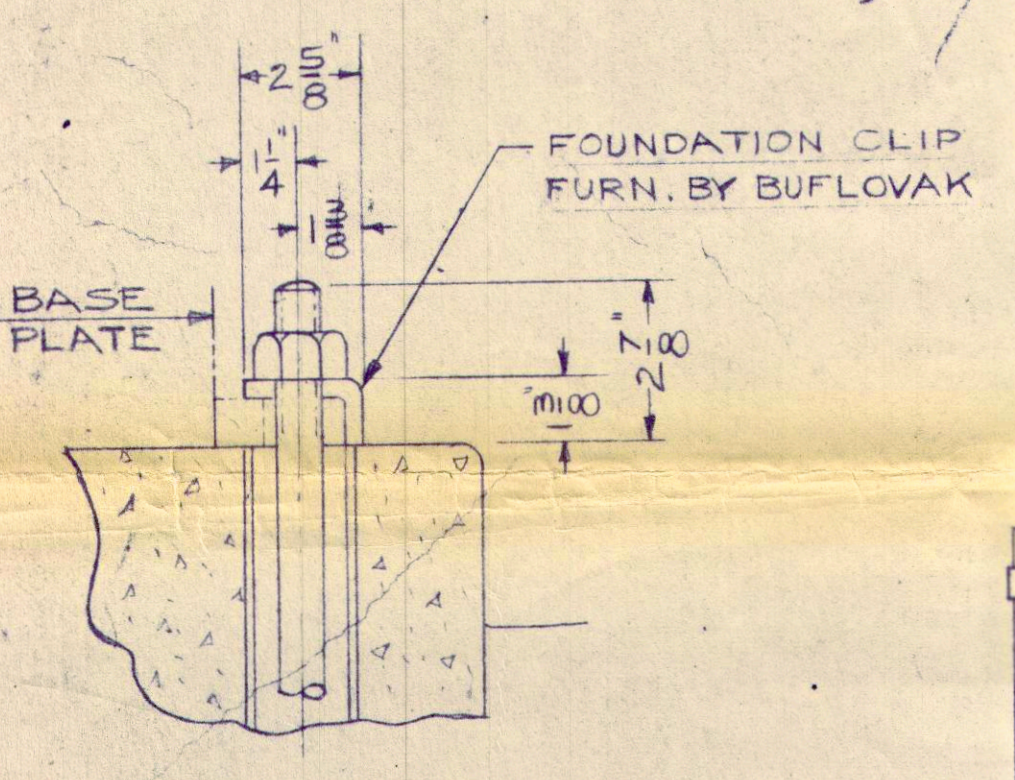


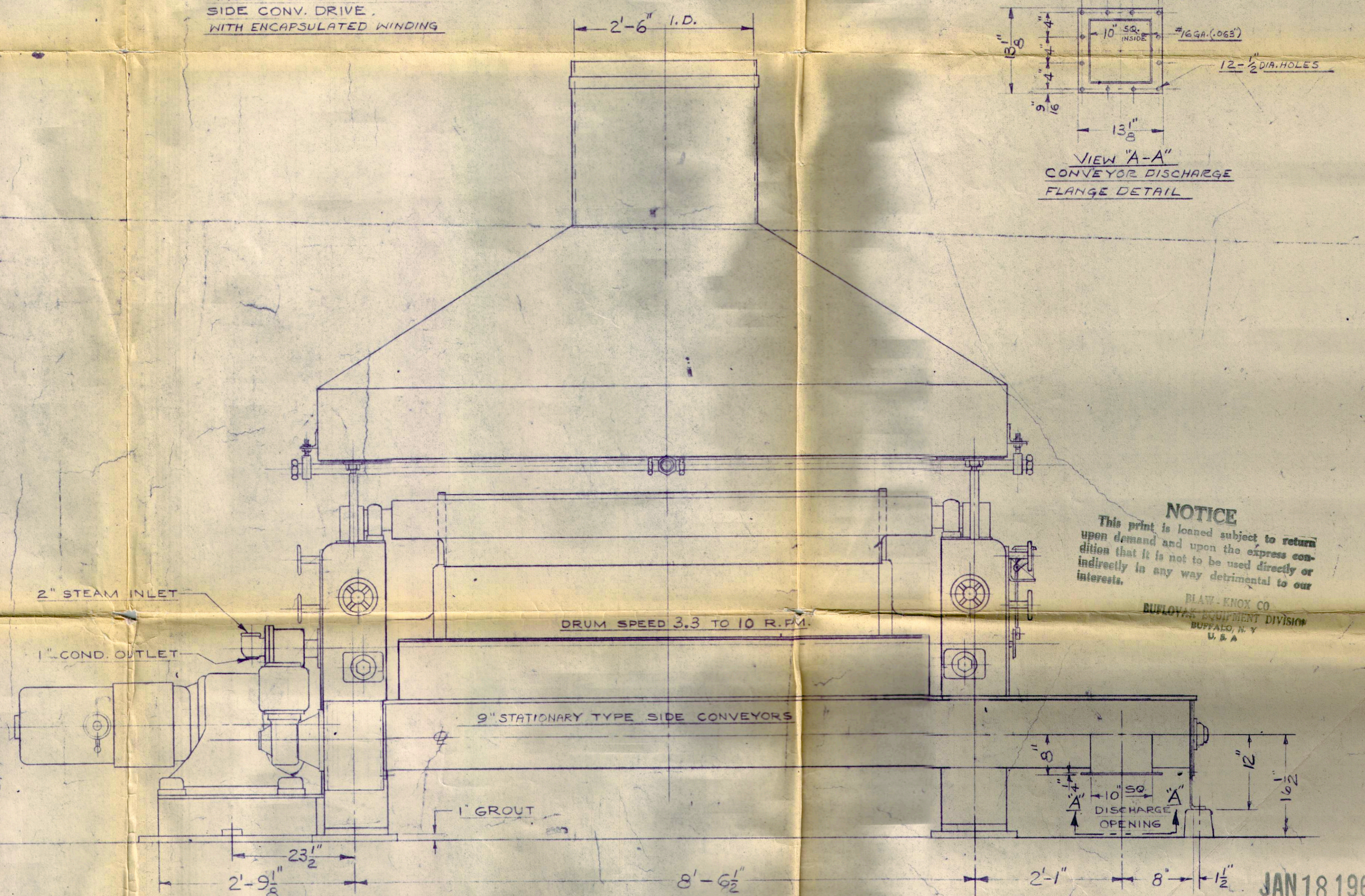
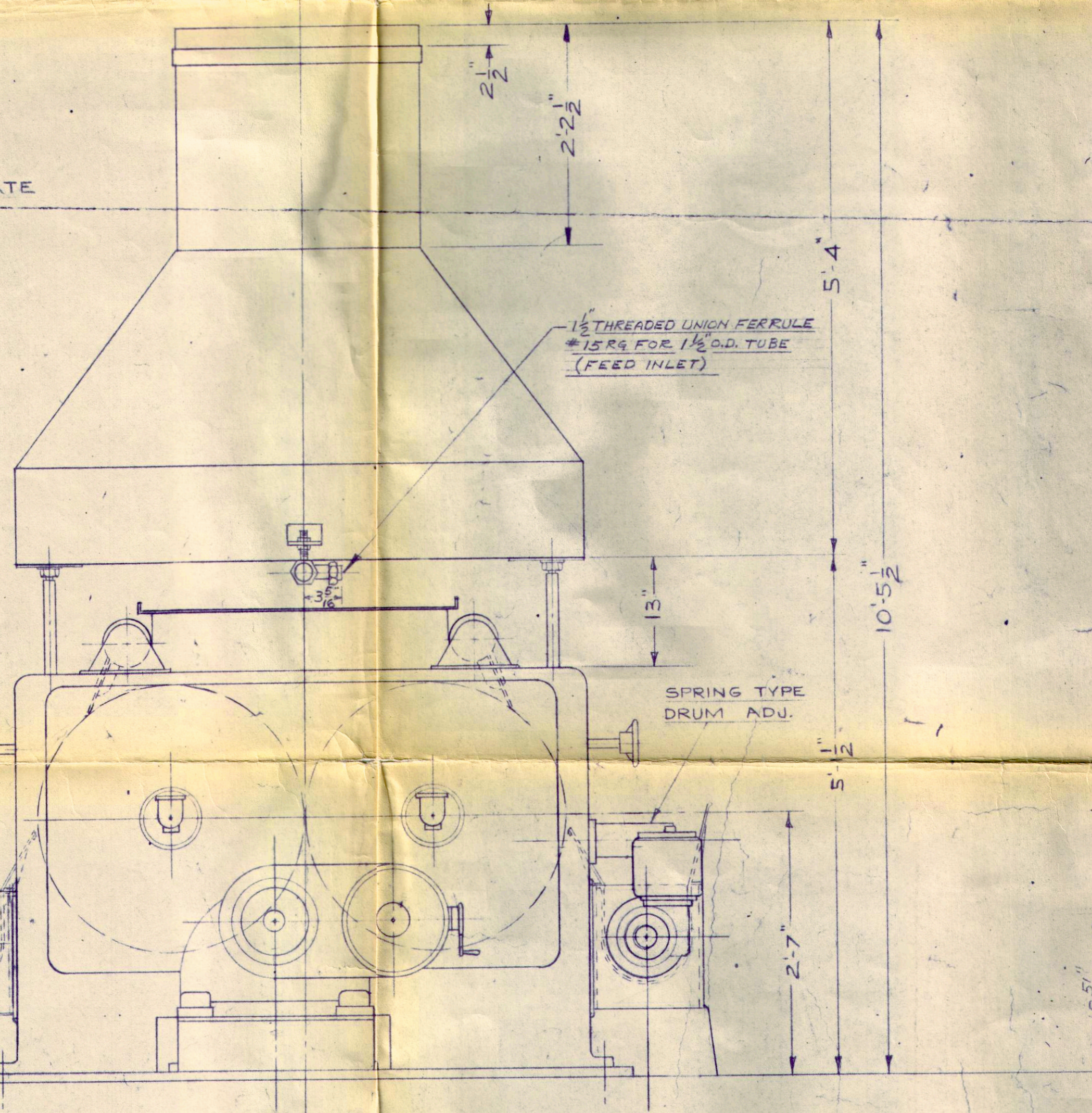
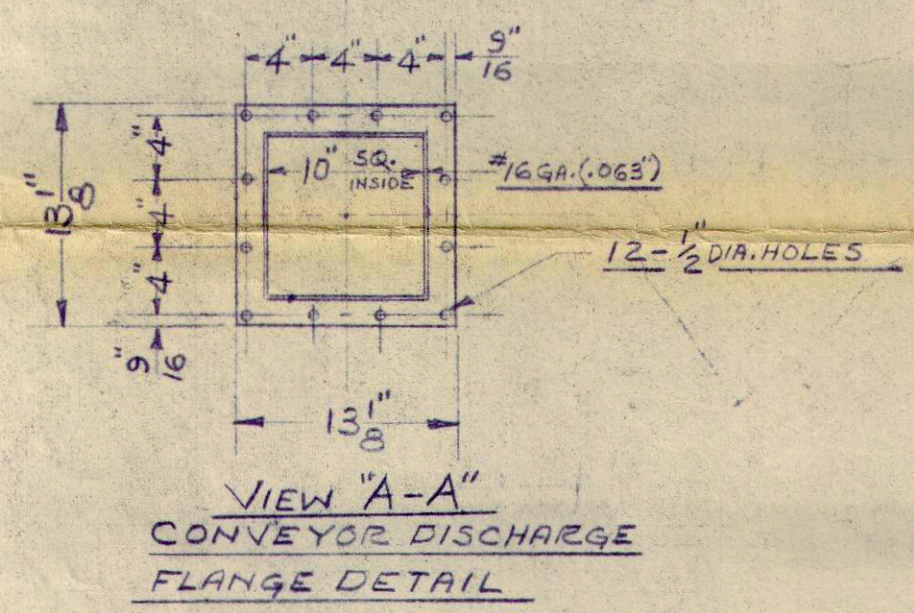
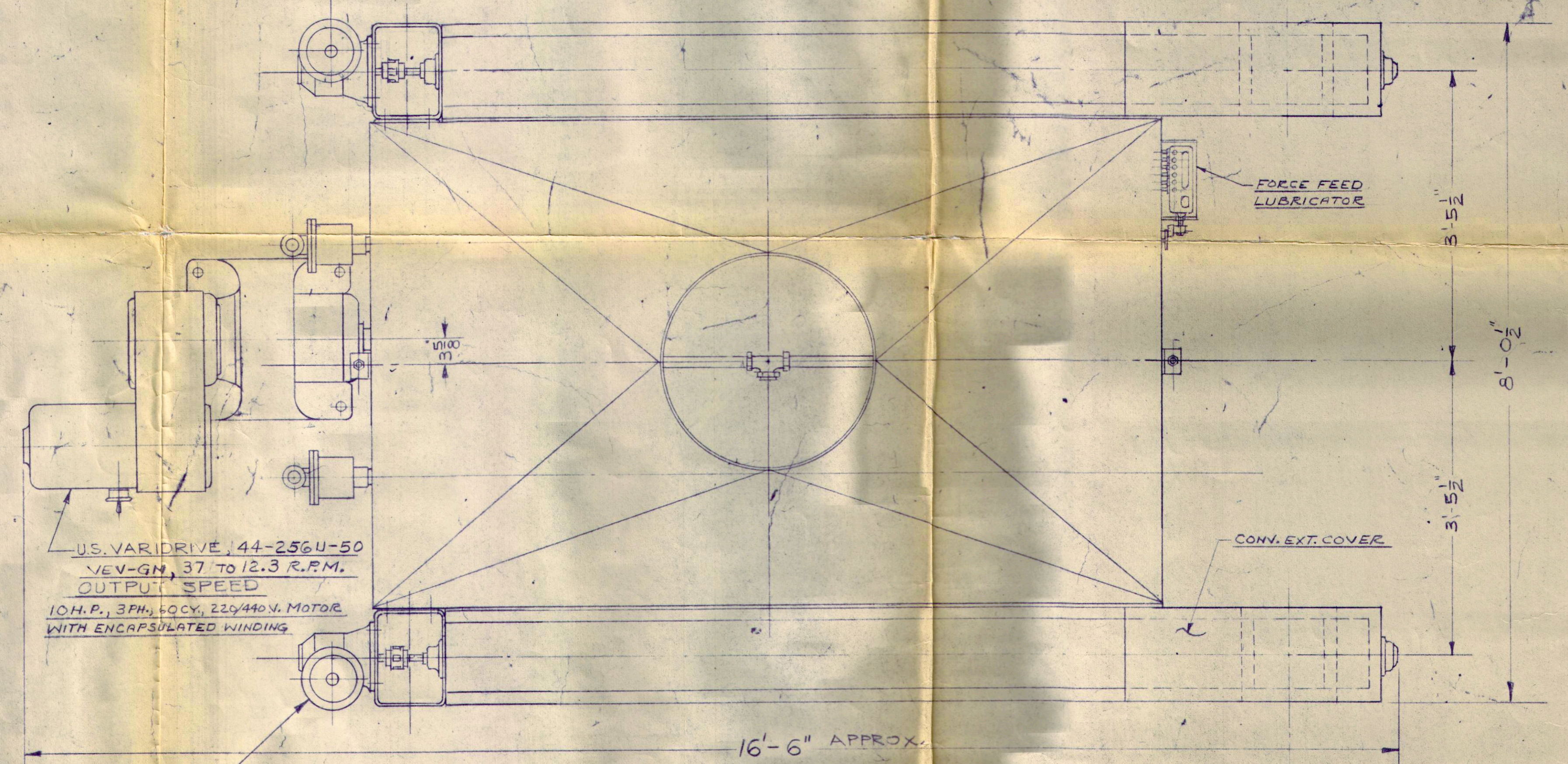
FOUNDATION PLAN



SECTION THRU BASE PLATE FOUNDATION BOLT

FOUNDATIONS FOR CONVEYORS TO BE PUT IN PLACE AFTER THESE PARTS HAVE BEEN ASSEMBLED IN PROPER ALIGNMENT.

FOUNDATION BOLTS & PIPES FURNISHED BY CUSTOMER



**NOTICE**  
This print is loaned subject to return upon demand and upon the express condition that it is not to be used directly or indirectly in any way detrimental to our interests.  
BLAW-KNOX CO.  
BUFFALO EQUIPMENT DIVISION  
BUFFALO, N. Y.  
U. S. A.

JAN 18 1965

MACHINE FINISH SYMBOLS				RC - ROUGH CUT / R - ROUGH FINISH / M - MEDIUM FINISH / F - FINE FILE			
1	2	3	4	5	6	7	8
<b>BLAW-KNOX COMPANY</b> <b>BUFLOVAK EQUIPMENT DIVISION</b>				SCALE: 1" = 12" BUFFALO, N. Y. 1-22-64 EQUIP. DOUBLE DRUM DRYER TYPE ATMOS. Model "F"   SIZE 32" X 72" PART NAME: FIELD ASSEMBLY AND FOUNDATION PLAN Original Shop Order: 63-8315-B DWG. No. E-3311			
REPERECE DWG. No. E-1857	SHOP ORDER	APP. BY	DATE	SHELL P.P. T.P. JACKEW.P. T.P.			
DO NOT SCALE DRAWING				MACHINE SHOP NOTE - ALL FRACTIONAL DIMENSIONS ± .015 UNLESS OTHERWISE SPECIFIED			