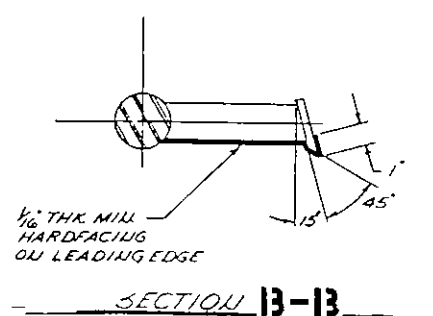
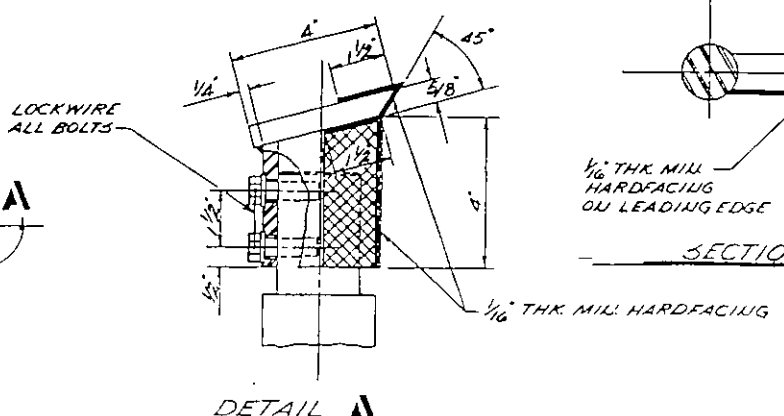
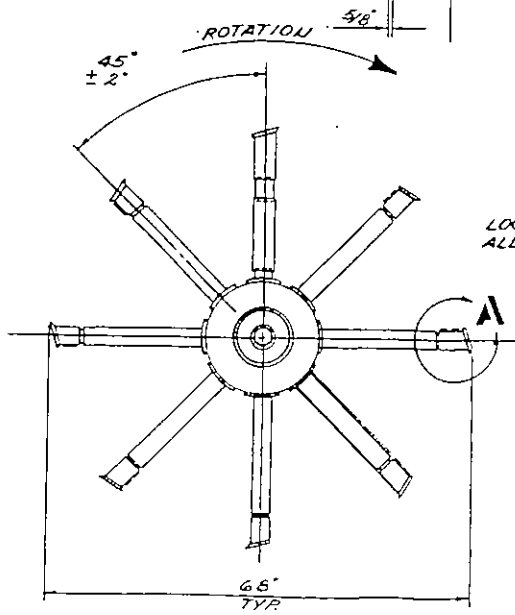
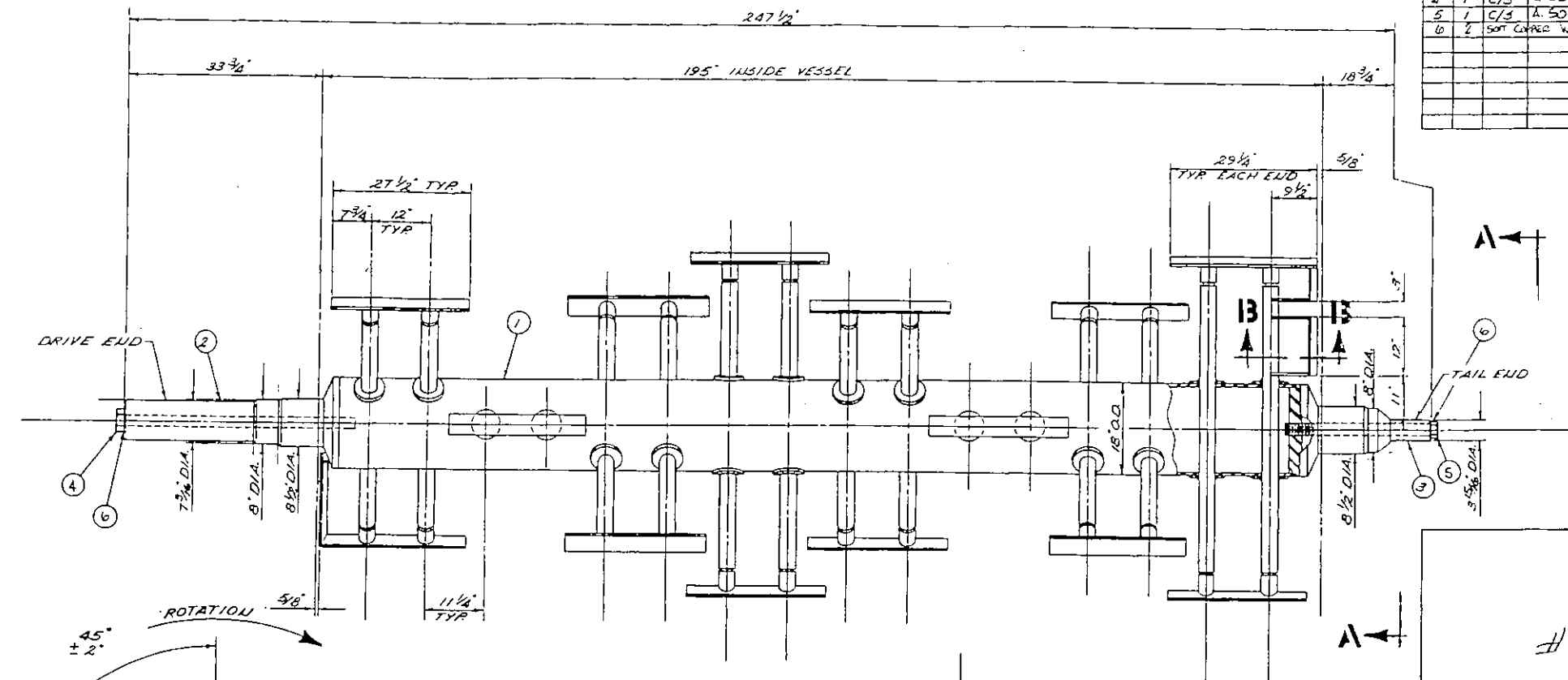


ITEM	QTY	MAT'L	PART NO.	DESCRIPTION
1	1	C/S	D502981	ROTOR ASSEMBLY
2	1	C/S	C502982	DRIVE SHAFT
3	1	C/S	C502983	TAIL SHAFT
4	1	C/S	A 503188	SHAFT BOLT
5	1	C/S	A 503189	SHAFT BOLT
6	2	SPT LINED WASHER	157-00 x 3 1/2" O.D. x 2 1/2"	



61809

~~61809~~
~~61809~~
~~61809~~

A. Project: **Calum Greenfield Sludge Dewatering & ERS Contract No. 1**

B. Owner: **L.A. County Sanitary Dist. #7**

C. Engineer: **Forster Wheeler**

D. Contractor: **Bruderson Corporation**

E. Sub Contractor: **Bepep Corporation**

F. Sub Contractor No.: **8609331**

G. Supplier's Purchase Agreement No.: **CR22-400 Continuator**

H. Manufacturer's Name: **To Follow**

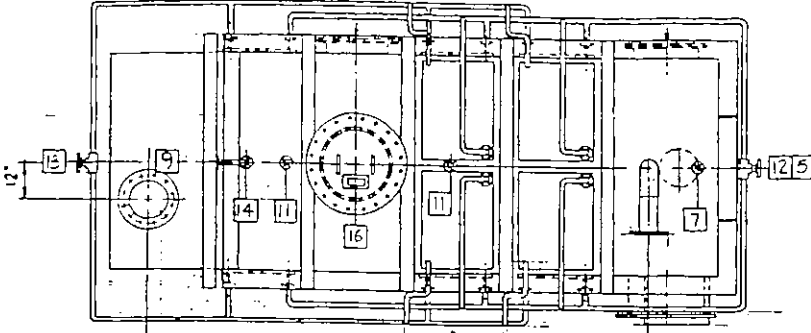
I. Contract Drawing Reference: **Microhead Boiler & Mach. Co. IPI-12, IM-134, IM-200**

J. Applicable Specifications: **13K**

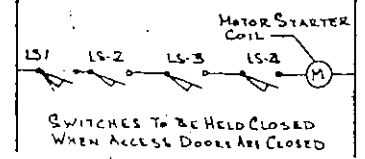
K. Description of location within the facility being constructed, where installation is intended: **Between Columns #11 & #12 at Elev. 86.0'**

REV.	DATE	CHK. NO.	DESCRIPTION	DR.	CHK.
A	9/4/66		REVISED PER APPROVAL DATED 7/30/66 DGT.		
<small>THIS DRAWING IS THE PROPERTY OF BEPEP CORPORATION AND IS TRANSMITTED IN CONFIDENCE. THE REPRODUCTION USE OF THIS DRAWING IN WHOLE OR IN PART, OR THE DISSEMINATION OF THIS DRAWING WITHOUT THE WRITTEN CONSENT OF BEPEP CORPORATION.</small>					
bepep corporation					
<small>TOLERANCES UNLESS OTHERWISE SPECIFIED</small>		<small>ISO 128 METHOD A</small>	TITLE ROTOR ASSEMBLY W/STUB SHAFTS		
<small>FRACTIONS</small>	<small>2</small>	<small>+</small>	<small>TAG NO. 1K/11/1M-DR-102</small>		
<small>DECIMALS</small>	<small>2</small>	<small>APP</small>	<small>SCALE 1/2" = 1'-0"</small>		
<small>ANGLES</small>	<small>1</small>	<small>CHK</small>	<small>DRAWING NO.</small>		
<small>HOLES</small>	<small>Ø 1/8 - 3/16</small>	<small>DR</small>	<small>D503098</small>		
<small>USE/CON.</small>	<small>111</small>	<small>NEXT ASSY</small>	<small>REV</small>		
<small>PART NO.</small>	<small>111</small>	<small>SIM TO</small>	<small>DRG JOB NO</small>		

- SHOP TEST PROCEDURES**
- VACUUM TEST VESSEL AT 1 PSIA, MAX DECAY 0.3 PSI/HR FOR 24 HOUR.
 - HYDRO TEST VESSEL AT 22 1/2 PSIG
 - HYDRO TEST VESSEL JACKET AT 235 PSIG
 - MANUALLY TURN ROTOR A MIN. OF 10 COMPLETE REVOLUTIONS TO CHECK FOR INTERFERENCE
 - INSTALL & REMOVE WEIR PLATES TO INSURE FIT.



PLAN VIEW



ACCESS COVER LIMIT SWITCH WIRING DIAGRAM

INSULATION STUDS ON 12" CTRS ON DOME COVER, END PLATES, JACKET & AROUND PAUCL COILS (40)(39)

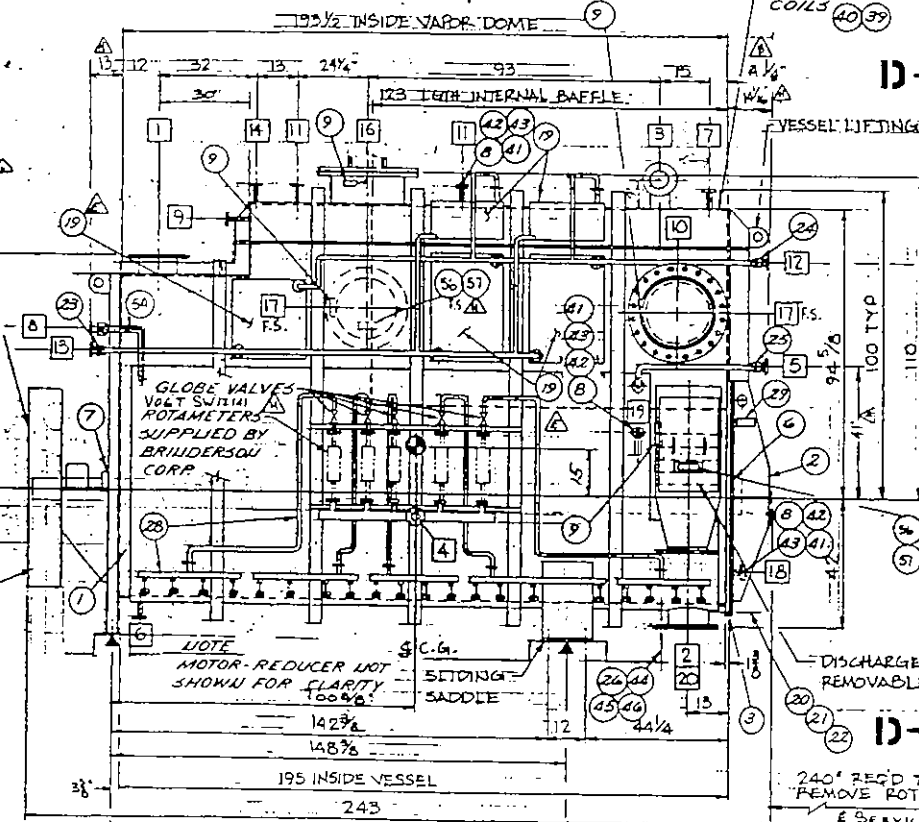
13000# NORMAL 26000# STARTING

1000# NORMAL 500# STARTING

CHAIN PULL DIAGRAM

Project Carage Greenfield
Owner Jackson Construction & ERS
Contract No. L.A. County Sanitary Dist. #2
Engineer Foster Wheeler
Contractors Brinderson Corporation
Sub Contractor Bepe Corporation
Sub Contractor No. 84000111
CR 02-400 Continuator

Supplier's Purchase Agreement No. To Follow
Manufacturer's Name Moorehead Beller & Muck Co.
Contract Drawing Reference DP-12, IM-134, IM-200
Applicable Specifications Designation of location within the facility being constructed, where installation is intended:
 Between Columns 3-11 & 81-85
 At Elev. 34'0"

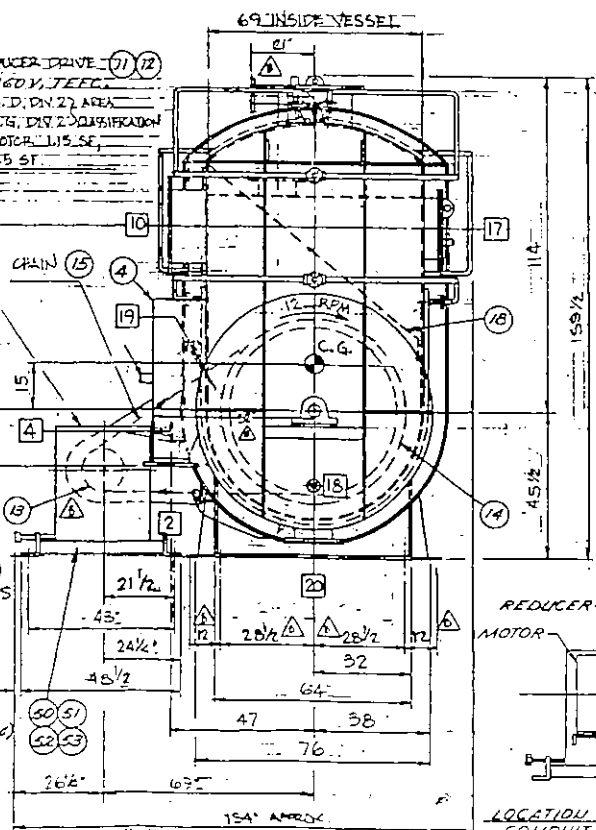


MOTOR-REDUCER DRIVE (71)(72)
 15HP 3PH 460V, TEFC
 CLASS II GR. D, DIV 27 AREA
 CLASS II GR. G, DIV 2 QUALIFICATION
 HURLETT MOTOR L15 SE
 REDUCER L15 SF

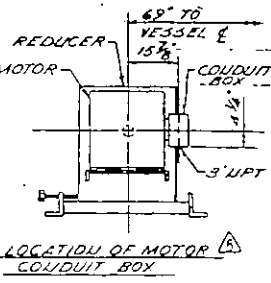
DISCHARGE W/ (17) 1" REMOVABLE WEIR PLATES

240" REQ'D TO REMOVE ROTOR

E SERVICE (SEE NOTE 14)



VIEW D-D



LOCATION OF MOTOR COUPLER BOX

- NOTES:**
- MATERIAL OF CONSTRUCTION IS CARBON STEEL. INTERNAL BAFFLE 304 STN. STL., PAUCL STEAM & COUDESATE MAINFOLDS 30433. TUBING, WALL THK. .065.
 - GASKETS & O-RINGS ARE VITON.
 - JACKET DESIGNED AND LABELED IN ACCORDANCE WITH ASME CODE SECTION VIII CURRENT ISSUE. DESIGN PRESSURE 190 PSIG AT 385°F. HYDROSTATIC TEST AT 265 PSIG AND VACUUM TEST AT 1 PSIA, MAX DECAY 0.3 PSI/HR. FOR 24 HRS.
 - VESSEL TROUGH SHELL TO INCLUDE 1/8" CORROSION ALLOWANCE. (TOTAL) 3/8" SHELL & 1/2" JKT.
 - ROTOR PADDLES LEADING EDGES ARE HARDFACED: (1/8" CORROSION ALLOWANCE)
 - UNIT WEIGHTS: ROTOR 5500#. UNIT TOTAL LESS DRIVE 58000#. DRIVE WT. 4000# (REDUCER, MOTOR, BASE); CHAIN & SPROCKETS 1726#. OPERATING WEIGHT WITH 400 FT³ MATERIAL = 58000# (APPROX TOTAL INCLUDING DRIVE).

- THESE LOADS DO NOT INCLUDE DYNAMIC LOAD RESULTING FROM CHAIN PULL.
- INSULATION CLIPS ARE PROVIDED ON APPROX 12" CENTERS AROUND JACKET AND PLATE COILS.
- PAINT PER FIN. SPEC 91-7112 A. USE SPEC. PAINT.
- ALL FLG. RODS TO STRADDLE UNIT E/S UNLESS SHOWN OTHERWISE
- NOTE: W/ 76 GROSS BSHTA @ 3 FT.
- HEAT TRANSFER AREA JACKET 214.50 FT²
- TWO SETS OF ROTOR DOLLIES SHALL BE FURNISHED BY BEPEX.
- PAUCL COILS SHALL COVER 25% OF THE VAPOR DOME

61809

~~61807~~

~~61808~~

~~61809~~

DR 102

BRINDERSOU P.O. 0225-6212
 ITEM NO: 1K-DR-102, 1L-DR-102 & 1M-DR-102

REV	DATE	CON. NO.	DESCRIPTION	DR	CHK
H	11-11-86		ADD VOLT VALVE. ADD G TO PSI	EL	EL
H	11-11-86		VESSEL DESIGN TEMP WAS 350°F	EL	EL
E	03-86		REVISED QUANTITY OF PAUCL COILS	EL	EL
D	01/86		ADDED BILL OF MATERIAL	EL	EL
C	07/84		SEE SHEET B	DR	EL
B	01-86		MOTOR WAS OPPOSITE SIDE SHOWN, ADD SHT 2	DD	EL
A	02-86		REDRAWN ADDED SHT 2	BD	EL
REV	DATE	CON. NO.	DESCRIPTION	DR	CHK

THIS DRAWING IS THE PROPERTY OF BEPEX CORPORATION AND IS TRANSMITTED IN CONFIDENCE. THE REPRODUCTION, USE, OR INCORPORATION IN ANY MANNER OF THIS DRAWING WITHOUT THE WRITTEN PERMISSION OF BEPEX CORPORATION IS PROHIBITED.

bepe corporation

TOLERANCES UNLESS OTHERWISE SPECIFIED: FRACTIONS: 1/32" DECIMALS: .005" ANGLES: 1/32" HOLES: 1/32" DIA - .000" USED ON: PART NO. 1 SIM TO 011G JOB NO. SHEET: 01

TITLE: 1M-DR-102, 1L-DR-102, 1K-DR-102
 CRUJ 400 CONTINUATOR
 2ND STAGE #HYDROEXTRACTOR

SCALE: 1/2" = 1'-0"

APP: [Signature] CHK: [Signature] DR: J.E.C. NEXT ASSY: D502367