

STREAM NO.	1	2	3	4	5	6	7	8	9	10	11	12	13	14	15	16	17	18	19	20	21	22	23	24	25	26	27	28	29	30
STREAM NAME	1 ST STAGE FEED INLET	1 ST STAGE PRODUCT OVERHEAD	1 ST STAGE VAPOR OUTLET	2 ND STAGE FEED INLET	2 ND STAGE PRODUCT OVERHEAD	2 ND STAGE VAPOR OUTLET	COOLER FEED INLET	COOLER PRODUCT OVERHEAD	COOLER VAPOR OUTLET	1 ST STAGE ROTOR STEAM	1 ST STAGE PANEL STEAM	1 ST STAGE SHUFFLING STEAM	1 ST STAGE JACKET STEAM	1 ST STAGE ROTOR COND.	1 ST STAGE JACKET COND.	1 ST STAGE THROUGH N2	1 ST STAGE SEAL N2 (10 SCFM)	2 ND STAGE JACKET STEAM	2 ND STAGE PANEL STEAM	2 ND STAGE SHUFFLING STEAM	2 ND STAGE PANEL COND.	2 ND STAGE JACKET COND.	2 ND STAGE THROUGH N2	2 ND STAGE SEAL N2 (10 SCFM)	COOLER SHUFFLING STEAM	COOLER ROTOR WATER INLET	COOLER ROTOR WATER OUTLET	COOLER THROUGH N2	COOLER SEAL N2 (10 SCFM)	
FLOW RATE (ACFM)	—	—	3050	—	—	123	—	—	0	90	2	0	14	—	—	—	0	—	—	—	—	—	—	—	0	—	—	0	—	—
FLOW RATE (SCFM)	—	—	—	—	—	—	—	—	—	—	—	—	0.1	4	0.6	—	—	—	—	—	—	—	—	—	—	139	139	—	—	
TEMP. (°F)	254	300	300	300	300	300	300	150	—	366	366	366	366	366	366	70	70	366	366	366	366	366	366	70	70	366	97	107	70	70
PRESS. (PSIA)	3.5	3.5	3.5	2.5	2.5	2.5	14.7	14.7	—	165	165	165	165	165	165	25	40	165	165	165	165	165	25	40	165	90	85	25	40	
COMPONENTS:																														
DRY SOLIDS (#/hr)	10617	10617	—	10617	10617	—	10617	10617	—	—	—	—	—	—	—	—	—	—	—	—	—	—	—	—	—	—	—	—	—	—
EMSCO OIL (#/hr)	7608	387	7221	387	25	362	25	25	—	—	—	—	—	—	—	—	—	—	—	—	—	—	—	—	—	—	—	—	—	—
HEAVY OIL (#/hr)	207	207	—	207	207	—	207	207	—	—	—	—	—	—	—	—	—	—	—	—	—	—	—	—	—	—	—	—	—	—
H2O (#/hr)	688	317	271	317	317	—	317	317	—	1936	40	0	289	40	1936	289	—	—	54	46	0	46	54	—	—	0	69500	69500	—	—
N2 (#/hr)	—	—	—	—	—	—	—	—	0	—	—	—	—	—	—	0	44	—	—	—	—	—	—	—	0	44	—	—	—	—
TOTAL (#/hr)	19,020	11,600	—	11,600	11,200	—	11,200	11,200	0	1936	40	0	289	40	1936	289	0	44	54	46	0	46	54	0	44	0	69500	69500	0	44

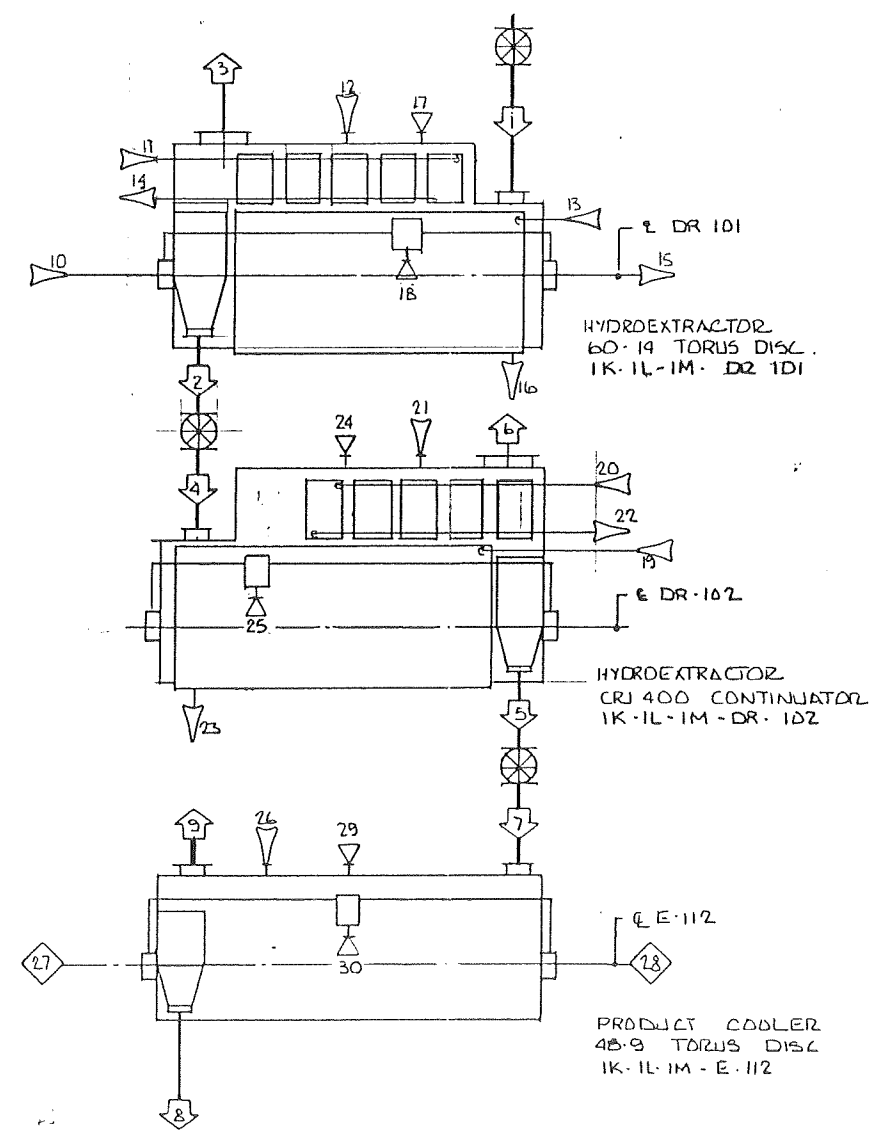
ITEM	QTY	MAT'L	PART NO.	DESCRIPTION
1	1			1 ST STAGE FEED INLET
2	1			1 ST STAGE PRODUCT OVERHEAD
3	1			1 ST STAGE VAPOR OUTLET
4	1			2 ND STAGE FEED INLET
5	1			2 ND STAGE PRODUCT OVERHEAD
6	1			2 ND STAGE VAPOR OUTLET
7	1			COOLER FEED INLET
8	1			COOLER PRODUCT OVERHEAD
9	1			COOLER VAPOR OUTLET
10	1			1 ST STAGE ROTOR STEAM
11	1			1 ST STAGE PANEL STEAM
12	1			1 ST STAGE SHUFFLING STEAM
13	1			1 ST STAGE JACKET STEAM
14	1			1 ST STAGE ROTOR COND.
15	1			1 ST STAGE JACKET COND.
16	1			1 ST STAGE THROUGH N2
17	1			1 ST STAGE SEAL N2 (10 SCFM)
18	1			2 ND STAGE JACKET STEAM
19	1			2 ND STAGE PANEL STEAM
20	1			2 ND STAGE SHUFFLING STEAM
21	1			2 ND STAGE PANEL COND.
22	1			2 ND STAGE JACKET COND.
23	1			2 ND STAGE THROUGH N2
24	1			2 ND STAGE SEAL N2 (10 SCFM)
25	1			COOLER SHUFFLING STEAM
26	1			COOLER ROTOR WATER INLET
27	1			COOLER ROTOR WATER OUTLET
28	1			COOLER THROUGH N2
29	1			COOLER SEAL N2 (10 SCFM)
30	1			COOLER SEAL N2 (10 SCFM)

MOTOR LIST (PER LINE):

EQUIPMENT TAG N°	CONN. HP	BRAKE HP	OPER. K.W.	MOTOR RPM	REDUCER OUTPUT RPM
DR-101	100	85	64	1800	45
DR-102	75	64	48	1800	45
E-112	25	21	16	1800	56
TOTAL	200	170	128	—	—

UTILITIES (PER LINE):

NORMAL OPERATION	FLOW	SUPPLY TEMP.	SUPPLY PRESS.
STEAM	2365 #/HR.	366°F	165 PSIA
COOLING WATER	139 GPM	97°F	90 PSIA
NITROGEN	30 SCFM	70°F	40 PSIA



REV	DATE	ECN NO.	DESCRIPTION	DR	CHK
B	5-14-86		REVISED PER APPROVAL		
A	3/25/82		MOTOR AND UTILITIES CHART	DR	CHK

THIS DRAWING IS THE PROPERTY OF BEPEX CORPORATION AND IS TRANSMITTED IN CONFIDENCE. THE REPRODUCTION, USE, OR DISCLOSURE, IN WHOLE OR IN PART, OF THE DESIGN CONTAINED HEREIN IS PROHIBITED WITHOUT THE WRITTEN CONSENT OF BEPEX CORPORATION.

bepeX corporation

TOLERANCES: UNLESS OTHERWISE SPECIFIED
 FRACTIONS: 1/16
 DECIMALS: .001
 ANGLES: .1
 HOLES: +.010, -.005

ISO 128 METHOD A
 MACH. FIN. UNLESS NOTED

TITLE: FLOW SHEET
 TAG N°: 1K-1L-1M-DR-101
 1K-1L-1M-DR-102
 1K-1L-1M-E-112

APP: []
 CHK: []
 DR: DR-102
 NEXT ASSY: []

SCALE: 3/8" = 1'-0"
 DRAWING NO: D 502854
 REV: B

PART NO. SIM TO ORIG JOB NO. SHEET OF