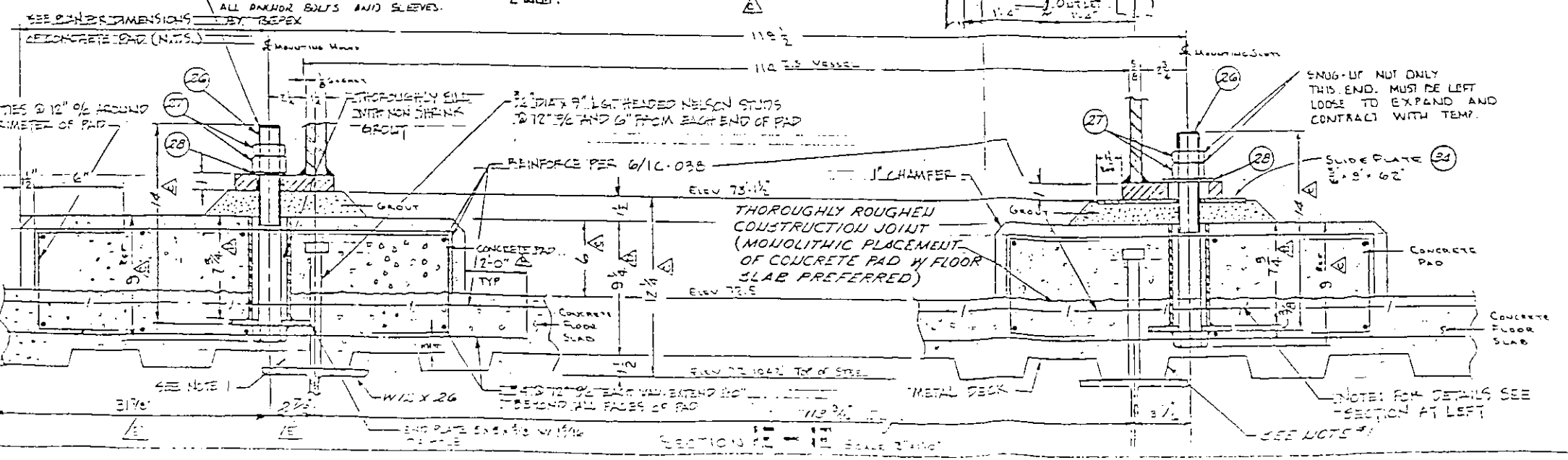


NOTE
 1. SPLIT AND/OR ADJUST METAL DECK SUCH THAT A MINIMUM OF 4\"/>

Project: Carver Greenfield Sludge Dehydration & EHS
 Contract No. 1
 L.A. County Sanitary Dist. #2
 Owner: Foster Wheeler
 Contractor: Brinderson Corporation
 Sub Contractor: Bepex Corporation
 Sub Contractor No.: 86000512
 44-7 Torus/Dac

To Follow: Moonhead Boiler & Mach. Co. IP-13, 1M-140, 1M-130, & 1M-200 11K
 Description of location within the facility being constructed, where installation is intended: 3-11 & 81-0 At Elev. 72'-0"

61720
 # ~~61718~~
~~61719~~
~~61720~~



CERTIFIED DRAWING
 BEPEX CORP.
 DATE 11/10/06 PER [Signature]
 FOR [Signature]

REV.	DATE	ECN. NO.	DESCRIPTION	1 OR 1C/2
H	10-7-06		2D WAS 1'-0\"/>	
E			Checked For The 2'-3\"/>	
D			REVISED PER STRUCTURAL ENGINE DATED 6-7-00	BD
C			38 JUL 05, 3-11 WAS 5'-6\"/>	
B	15-8-04		ADDED STRUCTURAL SUPPORTS TO VIEWS	BD
A	12-15-04		73'-1 1/4\"/>	
A	12-15-04		REVISED PER MAJOR DATA FROM CITY OF LA	BD
A	12-15-04		REDRAWN	BD

THIS DRAWING IS THE PROPERTY OF BEPEX CORPORATION AND IS TRANSMITTED IN CONFIDENCE. THE REPRODUCTION USE, OR DISCLOSURE, IN WHOLE OR IN PART, OF THE DESIGN CONTAINED HEREIN IS PROHIBITED WITHOUT THE WRITTEN CONSENT OF BEPEX CORPORATION.

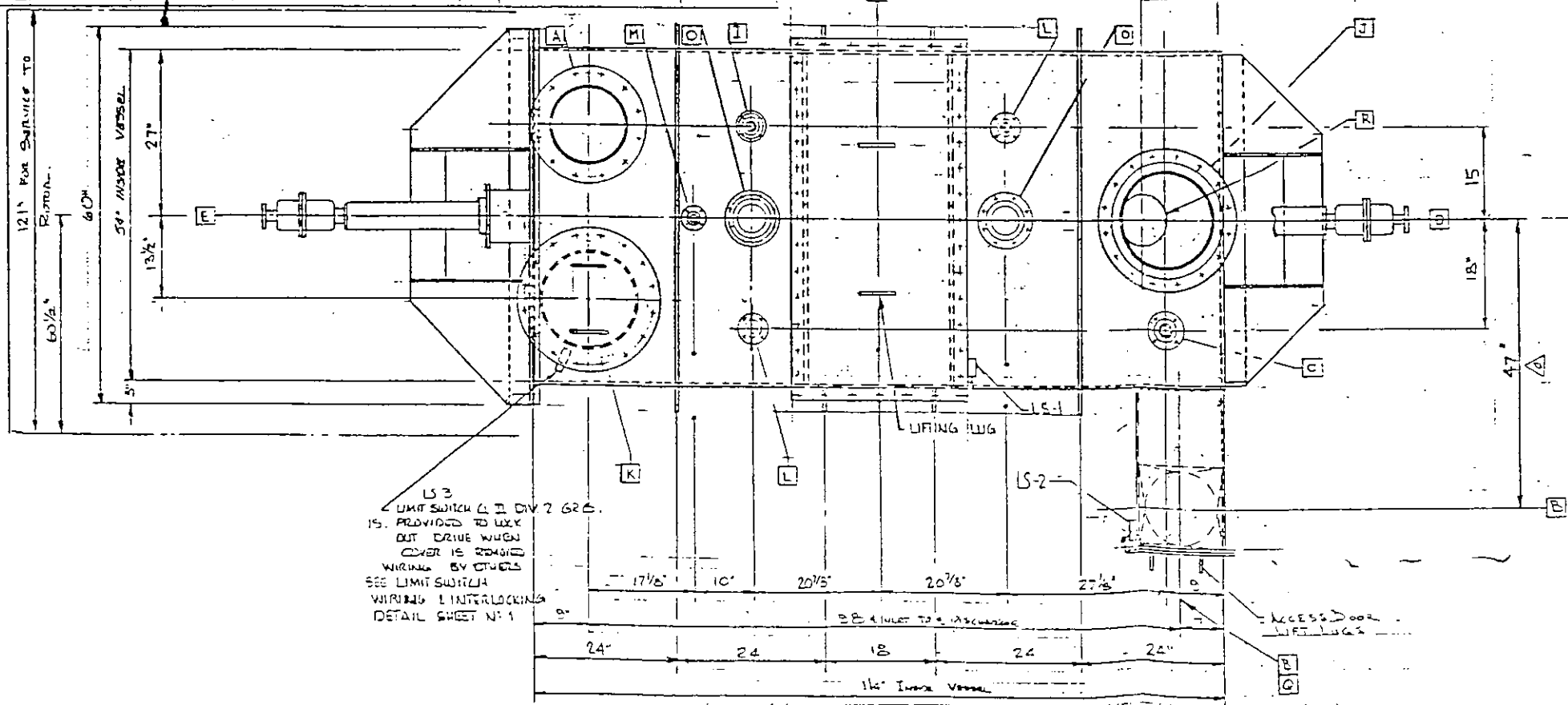
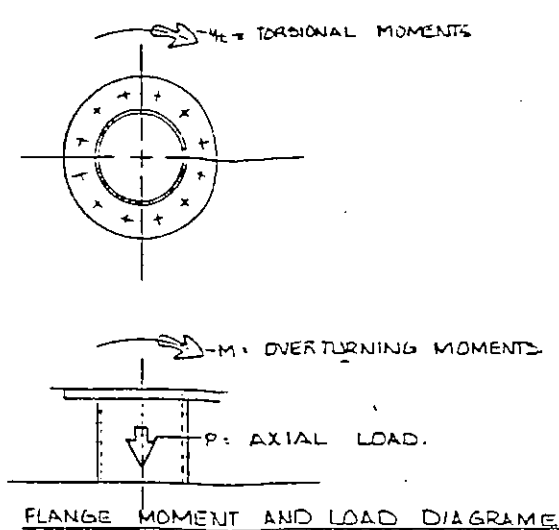
bepex corporation

TOLERANCES UNLESS OTHERWISE SPECIFIED: FRACTIONS: 1/32, 1/64, 1/16, 1/8, 1/4, 1/2, 3/4, 1, 2, 3, 4, 5, 6, 7, 8, 9, 10, 11, 12, 13, 14, 15, 16, 17, 18, 19, 20, 21, 22, 23, 24, 25, 26, 27, 28, 29, 30, 31, 32, 33, 34, 35, 36, 37, 38, 39, 40, 41, 42, 43, 44, 45, 46, 47, 48, 49, 50, 51, 52, 53, 54, 55, 56, 57, 58, 59, 60, 61, 62, 63, 64, 65, 66, 67, 68, 69, 70, 71, 72, 73, 74, 75, 76, 77, 78, 79, 80, 81, 82, 83, 84, 85, 86, 87, 88, 89, 90, 91, 92, 93, 94, 95, 96, 97, 98, 99, 100. DECIMALS: .0005, .001, .002, .005, .01, .02, .05, .1, .2, .5, 1, 2, 5, 10, 20, 50, 100. ANGLES: 15, 30, 45, 60, 75, 90, 105, 120, 135, 150, 165, 180. UNLESS NOTED OTHERWISE.

ISO 157 METHOD A
 TITLE: TD-48-B TORUS DISC COOLER
 TAG NO. 1K, 1L, 1M-E-112
 SCALE: 1/4\"/>

NOZZLES		ALLOWABLE NOZZLE MOMENTS/LOADS					
BEPEX LETTER	FOSTER WHEELER	SIZE RATING	SERVICE	QTY	P ₁ Lbs	M ₁ LBS.	M ₂ Lb.Ft.
A	1	12" 150# RF	FEED INLET PIPE FLG 1/2" TK-150# DR.	1	2000	1700	20000
B	2	12" 150# RF	SOLIDS OUTLET PIPE FLG 1/2" TK-150# DR.	1	1400	1200	10000
C	3	2" 150# RF	VENT	1	500	370	370
D	4	3" 150# RF	ROTOR COOLING WATER INLET	1	SEE NOTE 12		
E	5	3" 150# RF	ROTOR COOLING WATER OUTLET	1	SEE NOTE 12		
F	6	1/2" 150# RF	TE CONNECTION POINTS	2	330	200	430
G	—	—	THERMOWELL	2	N/A	N/A	N/A
H	—	—	THERMOCOUPLE	2	N/A	N/A	N/A
I	7	1/2" 150# RF	SHUTTING STEAM	1	330	200	430
J	8	1/6" 150# RF	PSE CONNECTION POINT	1	2000	3500	30000
K	—	—	Access Opening COVER 1/2" TK-150# DR.	1	N/A	N/A	N/A
L	9	1/2" 150# RF	SPARE 4" BLIND FLG.	2	330	200	430
M	10	3/4" 150# RF	NITROGEN TO TROUGH	1	170	50	93
N	11	3/4" 150# RF	NITROGEN TO SEALS	1	170	50	93
O	12	4" 150# RF	PIT CONNECTION POINT	2	800	450	4000
P	—	—	ACCESS OPENING COVER	1	N/A	N/A	N/A
Q	—	—	WEIR ACCESS OPENING COVER	1	N/A	N/A	N/A
R	—	—	25" 150# RF VESSEL CLEAN OUT 4" COVER	1	N/A	N/A	N/A

DWG A-502301



LS-3
LIMIT SWITCH @ DIV 2 GR. 15.
PROVIDED TO LOCK OUT DRIVE WHEN COVER IS REMOVED
WIRING BY OTHERS
SEE LIMIT SWITCH WIRING & INTERLOCKING
DETAIL SHEET N-1

ITEM	QTY	PART NO.	PART NO.	DESCRIPTION
A		Project:		Carver Greenfield Sludge Conversion & WRS Contract No. 1 L.A. County Sanitary Dist. #2
E		Owner:		Foster Wheeler
C		Engineer:		Brinderson Corporation
D		Contractor:		Bepex Corporation
E		Sub Contractor:		86000512
F		Sub Contractor No.:		44-9 TorusDuc
G		Supplier's Purchase Agreement No.:		To Follow
M		Manufacturer's Name:		Moorehead Boiler & Mach. Co.
L		Contract Drawing Reference:		171-13, 1M-140, 1M-180, & 1M-200
I		Applicable Specifications:		11K
J		Description of location within the facility being constructed, where installation is intended:		Between Columns 7-11 & 8-9 At Elev. 72'-0"

61720

CERTIFIED DRAWING
BEPEX CORP.
DATE 10/1/81 PER [Signature]
FOR [Signature]

REV.	DATE	ECN. NO.	DESCRIPTION	DR. TCHK.
6			17x27 OPENING WAS 21 x 33	DRG
5			27" V.L. 22" REVISID STIFFENER LOCATIONS	DRG
4			20 WAS 15-12 WAS 7" 19 WAS 98" 42 WAS 97"	DRG
B	09/28/81		REVISED PER APPROVAL DWE.	DRG
A	12/23/80		REDRAWN	DRG

THIS DRAWING IS THE PROPERTY OF BEPEX CORPORATION AND IS TRANSMITTED IN CONFIDENCE. THE REPRODUCTION, USE, OR DISCLOSURE, IN WHOLE OR IN PART, OF THE DESIGN CONTAINED HEREIN IS PROHIBITED WITHOUT THE WRITTEN CONSENT OF BEPEX CORPORATION.

bepex corporation

TOLERANCES UNLESS OTHERWISE SPECIFIED: FRACTIONS 1/16, 1/32, 1/64; DECIMALS .005, .010, .015, .020, .030, .040, .050, .060, .070, .080, .090, .100; ANGLES .1, .2, .5, 1, 2, 5, 10; HOLES .010 - DIA. UNLESS NOTED OTHERWISE.

ISO 129 METHOD A

TITLE: TD-48-B TORUS DISC COOLER T24 N° 1K, 1L, 1M, E-112

SCALE: 1" = 1'-0"

DATE: 10/1/81

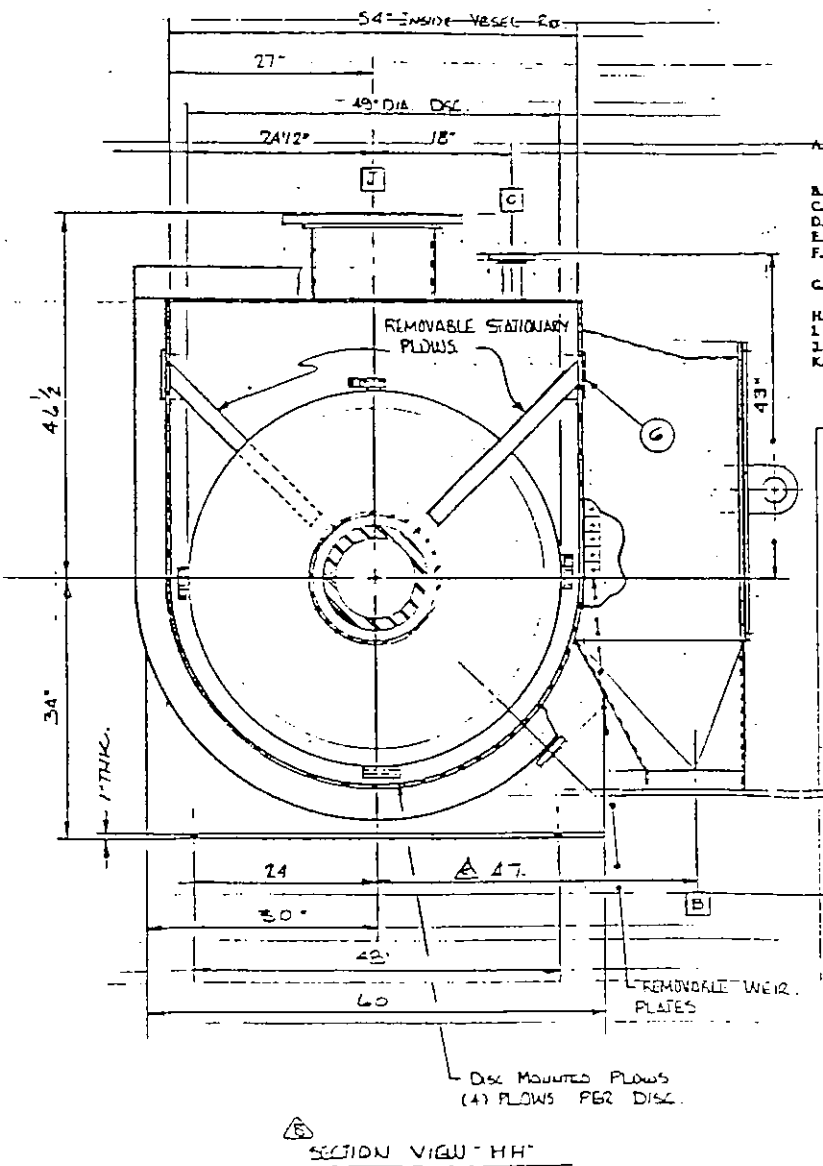
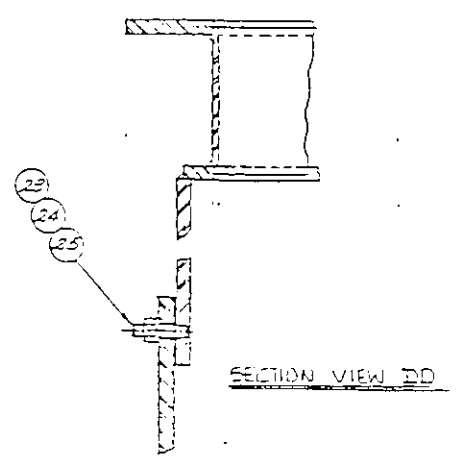
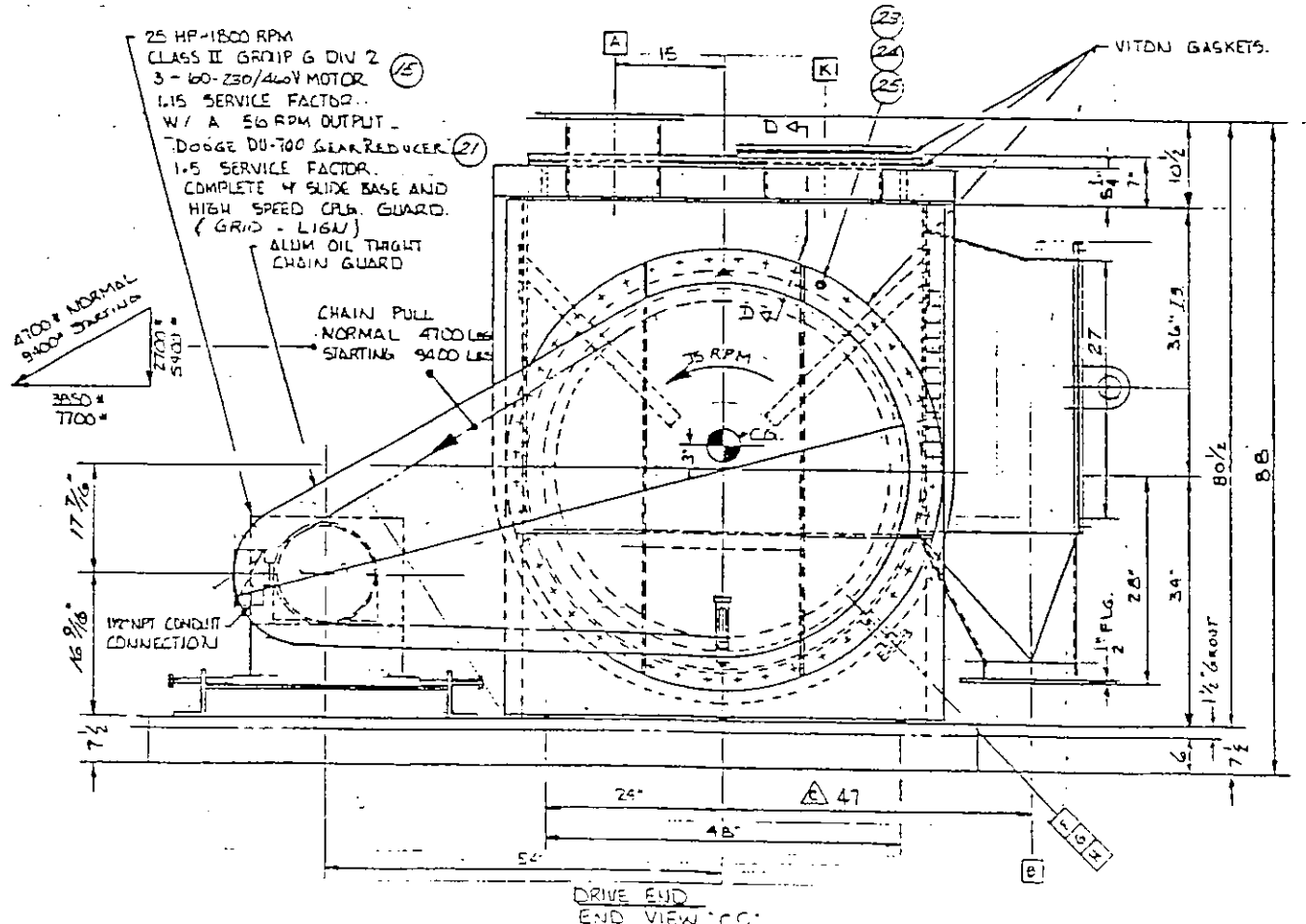
DR: [Signature]

DRG: [Signature]

DRG NO: D 502301

REV: 6

ITEM	QTY	MAT'L	PART NO.	DESCRIPTION
------	-----	-------	----------	-------------



Project: Carver Greenfield Sludge Dewateration & EPS
 Contract No. 1
 L.A. County Sanitary Dist. #2
 Owner: Foster Wheeler
 Contractor: Brinderson Corporation
 Sub Contractor: Bepex Corporation
 Sub Contractor No: 86000512
 44-9 TorusDisc

To Follow
 Manufacturer's Name: Moorehead Boiler & Mach. Co.
 Contract Drawing Reference: IPI-13, IM-140, IM-180, & IM-200
 Applicable Specifications: 11K
 Description of location: Between Columns 311 & 312 At Elev. B 1-G 72'-0"

61720

~~1-1-8~~
~~1-1-9~~
~~1-1-10~~

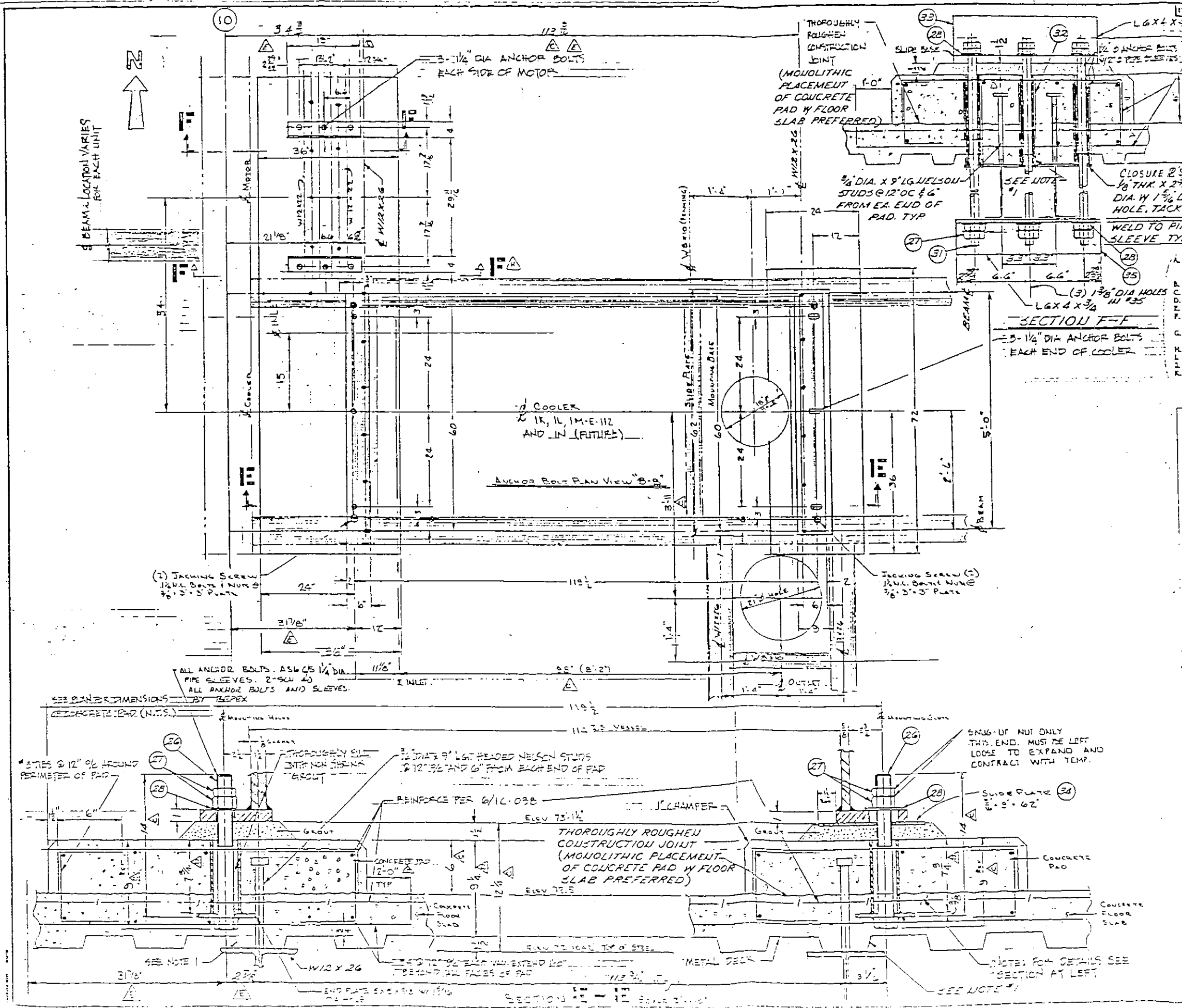
CERTIFIED DRAWING
 BEPEX CORP.
 DATE 10/14/88 PER [Signature]
 FOR [Signature] P.O. 6272

REV.	DATE	EGN. NO.	DESCRIPTION	DR	CHK
C	10/15/88	27	WAS 42		
B	10/15/88		ISODAS VIEW H11 ~ 42" WAS 37"		
A	10/15/88		RE-24000		

THIS DRAWING IS THE PROPERTY OF BEPEX CORPORATION AND IS TRANSMITTED IN CONFIDENCE. THE REPRODUCTION, USE OR DISCLOSURE, IN WHOLE OR IN PART, OF THE DESIGN CONTAINED HEREIN IS PROHIBITED WITHOUT THE WRITTEN CONSENT OF BEPEX CORPORATION.

bepex corporation

TOLERANCES UNLESS OTHERWISE SPECIFIED	ISO 128 METHOD A	TITLE
FRACTIONS 1/16	⊕	TL-432 TORUS DISC COOLER
DECIMALS .001	MAX FIN UNLESS NOTED	TAG NO. 1K-1L-1M-E-112
ANGLES 1/2	✓	APP'D [Signature]
UNITS INCHES		CHK'D [Signature]
		DATE 10/15/88
		DWG NO. D 800503



ITEM	QTY	MAT'L	PART NO.	DESCRIPTION
NOTE 1. SPLIT AND/OR ADJUST METAL DECK SUCH THAT A MINIMUM OF 4" WIDE CONCRETE RIB WILL OCCUR DIRECTLY ABOVE BEAM.				
Project: Carver Greenfield Sludge Dewateration & ERS Contract No. 1				
Owner: L.A. County Sanitary Dist. #2				
Engineer: Foster Wheeler				
Contractor: Brinderson Corporation				
Sub Contractor: Bepex Corporation				
Sub Contractor No: 86000512				
42-9 Tons/Disc				
To Follow: Moorehead Boiler & Mach. Co. IPT-13, 1M-140, 1M-132, & 1M-11K				
Contract Drawing Reference: 11K				
Applicable Specifications: Between Columns 111 & 111-G				
Description of location within the facility being constructed, where installation is intended: At Elev. 72'-7"				

61720

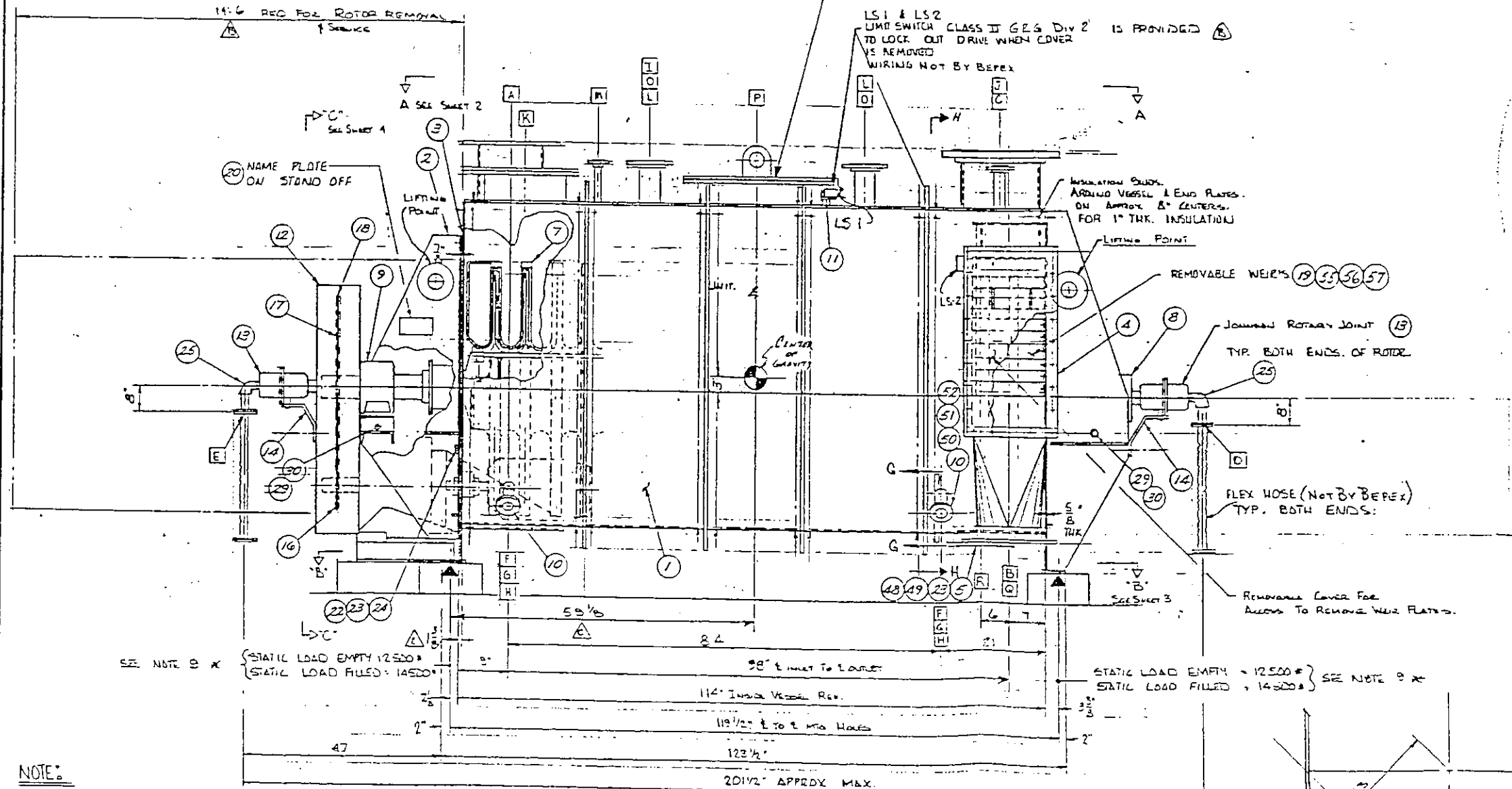
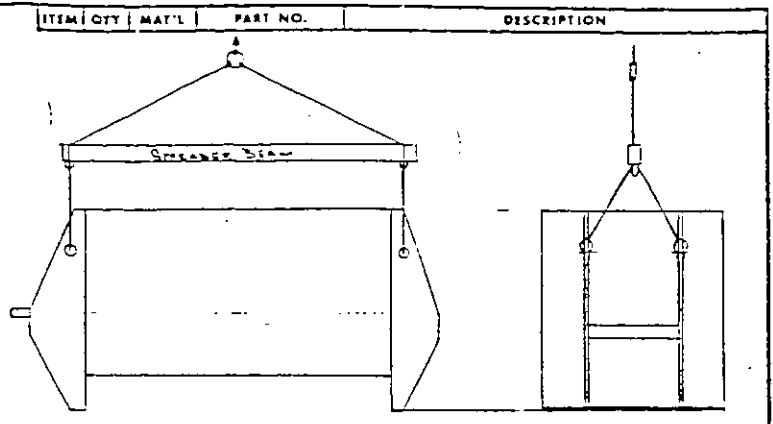
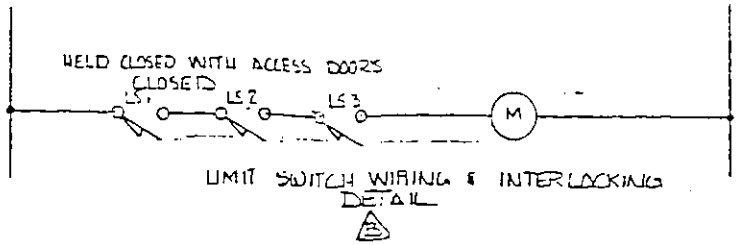
CERTIFIED DRAWING			
BEPEX CORP.			
DATE	BY	PER	FOR
12/15/81	WJG	WJG	REVISION 11/13/81

REV.	DATE	BY	DESCRIPTION	DR	CHK
A	12-15-81	WJG	REVISION 11/13/81		
B	12-15-81	WJG	REVISION 11/13/81		
C			ADDED STRUCTURAL SUPPORTS TO VIEWS		
D			73'-11" WAS 73'-0" INCREASED CONCRETE PAD TO 42" TALL		
E			38 UNLESS 3'-11" WAS 3'-6"		
F			REVISED PER MOOREHEAD DATA FROM CITY OF LA		
G			REVISION 11/13/81		

TOLERANCES UNLESS OTHERWISE SPECIFIED	ISO 128 METHOD A	TITLE
FRACTIONS	1/16	TD-48-B TONS DISC COOLER
DECIMALS	0.005	126 W. 1K, 1L, 1M-E-112
ANGLES	1/4	SCALE 1/4" = 1'-0"
HOLE	0.010	CONTRACT DRAWING NO. 11K
THREAD	0.005	DR. WJG
PLATE	0.005	DATE 12/15/81
		D 502368

SHOP TEST PROCEDURES

1. HYDROSTATIC TEST VESSEL AT 22 1/2 PSIG. ASME "U" STAMP IS ACC'D. Δ
2. HYDROSTATIC TEST ROTOR AT 150 PSIG. ASME "U" STAMP REQ'D.
3. MANUALLY TURN ROTOR ASSY A MIN OF 10 COMPLETE REV. TO CHECK FOR INTERFERENCES.
4. INSTALL AND REMOVE ALL WEIR FL'S TO INSURE FIT.



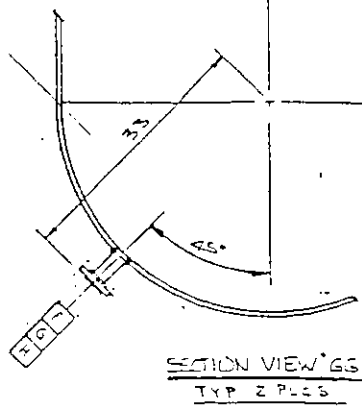
SUGGESTED LIFTING METHOD

A. Project:	Carver Greenfield Sludge Denaturation & ERS
B. Owner:	LA County Sanitary Dist. #2
C. Engineer:	Forster Wheeler
D. Contractor:	Brinderson Corporation
E. Sub Contractor:	Bepep Corporation
F. Sub Contractor No.:	0600512
G. Supplier's Purchase Agreement No.:	44-9 TorusDisc
H. Manufacturer's Name:	To Follow
I. Contract Drawing Reference:	IPF-13, IM-140, IM-150, & IM-200
J. Applicable Specifications:	11K
K. Description of location within the facility being constructed, where installation is intended:	Between Columns 311 & 312-G At Elev. 72.5'

61720

CERTIFIED DRAWING
 BEPEP CORP.
 DATE 11/16/81 PER [Signature]
 FOR Redrawn by 130

- NOTE:**
1. VESSEL DESIGN PRESSURE, 15 PSIG AT 300°F. HYDROSTATIC TEST VESSEL AT 22 1/2 PSIG. ASME "U" STAMP WILL BE PROVIDED.
 2. ROTOR DESIGNED AND CONSTRUCTED PER ASME SECTION VIII CURRENT ISSUE FOR 100 PSIG AT 300°F. HYDROSTATIC TEST AT 150 PSIG. ASME "U" STAMP WILL BE PROVIDED. **NO ADJUSTMENT TO HYDRO. TEST PRESS. IS NEEDED TO COMPENSATE FOR OPERATING TEMP.**
 3. ROTOR DISC ASSY HAS BEEN DESIGNED TO INCLUDE 1/8" CORROSION ALLOWANCE (TOTAL).
 4. TROUGH SWELL HAS BEEN DESIGNED TO INCLUDE 1/8" CORROSION ALLOWANCE (TOTAL).
 5. ALL FLG. BOLTING TO STRENGTH UNLESS NOTED OTHERWISE.
 6. MATERIAL OF CONSTRUCTION MILD STEEL A516 TO PLATE AND SA-106 B FOR SHAFT. Δ
 7. APPROX. WT: 25000 LBS. LESS FLUID (EMPTY); FILLED WITH PRODUCT 29000 LBS. DRIVE WT: 1700 LBS.
 8. PAINT PER FIN SPEC SA-F-12 A. USE SPEC 9A-4.7 C FOR SURFACE PREPARATION.
 9. * THESE LOADS DO NOT INCLUDE DYNAMIC LOADS RESULTING FROM DRIVE CHAIN PULL (SEE SHEET 2).
 10. ROTOR HOIST TRANSFER AREA ED. 440 SQ FT. NOISE NOT TO EXCEED 85 DBA AT 3 FT.
 11. FLEXIBLE HOSE MUST BE PROVIDED AT THE PUMP INLET AND OUTLET CONNECTIONS TO MINIMIZE MOMENTS AND FORCES ON THE ROTARY JOINTS. HOSE ARE NOT FURNISHED BY BEPEP.



BRINDERSON PD NO 0225-6212
 TAG 1K-E-112
 1L-E-112
 1M-E-112

REV. 1	DATE 10-3-81	DESCRIPTION	OR. CHK.
1	10-3-81	REVISED B/M END G & REVISED END Q/D	
2	10-3-81	ADDED BILL OF MATERIAL & ITEM #13	
3	11-16-81	1 1/2 WAS 1 1/2 ADD'D DIA TO CENTER OF GRAVITY	
4	11-16-81	REVISED PER MARKED DIM FROM CTY OF LA	
5	11-16-81	REWORK	

THIS DRAWING IS THE PROPERTY OF BEPEP CORPORATION AND IS TRANSMITTED IN CONFIDENCE. THE REPRODUCTION, USE OR DISCLOSURE, IN WHOLE OR IN PART, OF THE DESIGN CONTAINED HEREIN IS PROHIBITED WITHOUT THE WRITTEN CONSENT OF BEPEP CORPORATION.

bepep corporation

TOLERANCES UNLESS OTHERWISE SPECIFIED	ISO 1171 METHOD A	TITLE
FRACTIONS 1/16	1/16	TD. 48-B TORUS DISC COOLER
DECIMALS 0.005	0.005	TAG NO. 1K-E-112-1M-E-112
ANGLES 1/2	1/2	SCALE 1:1
HOLES 1/16	1/16	DATE 11-16-81
		DRW. NO. 0225-6212