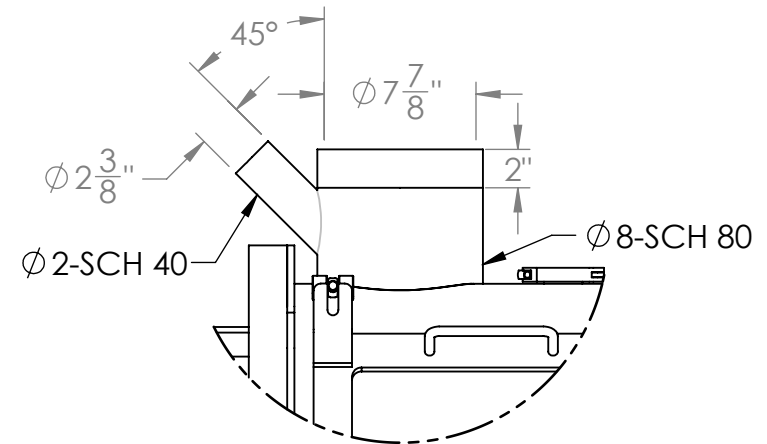
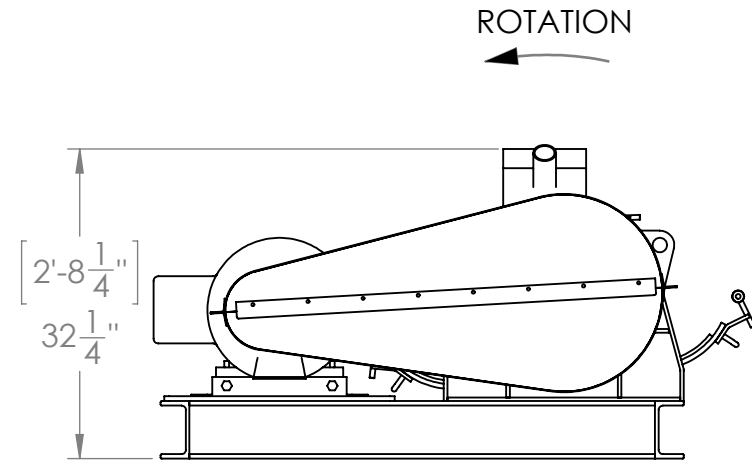
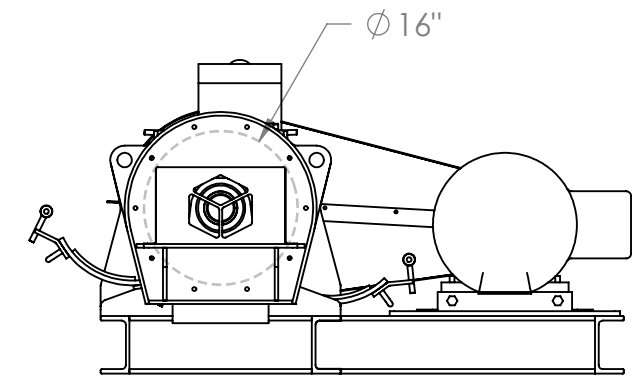
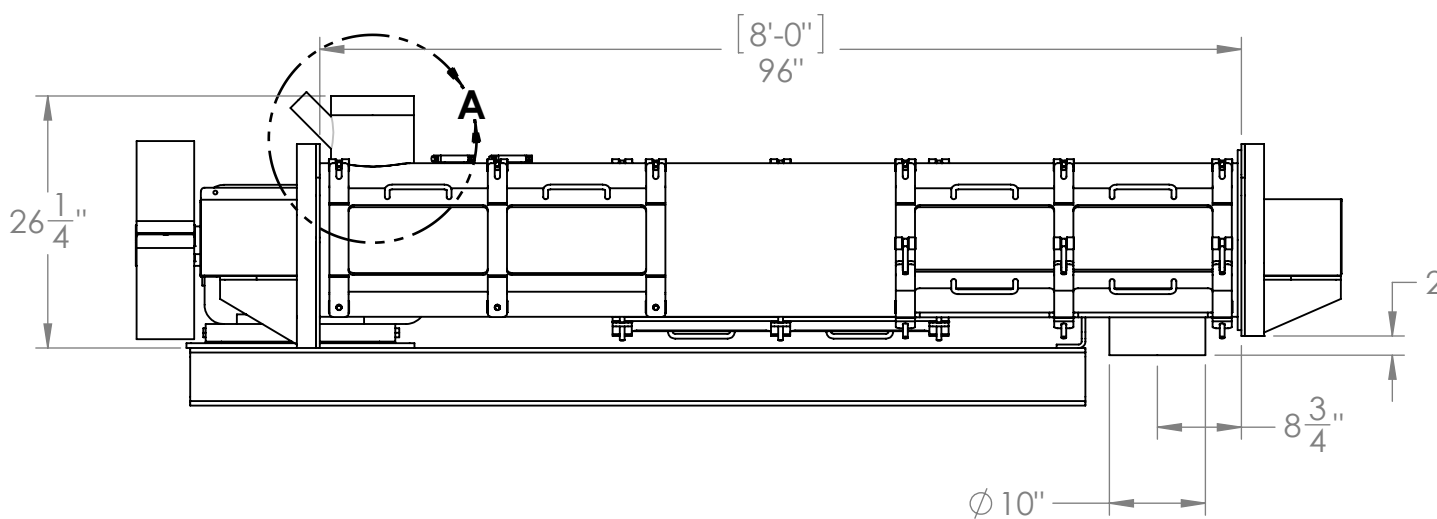
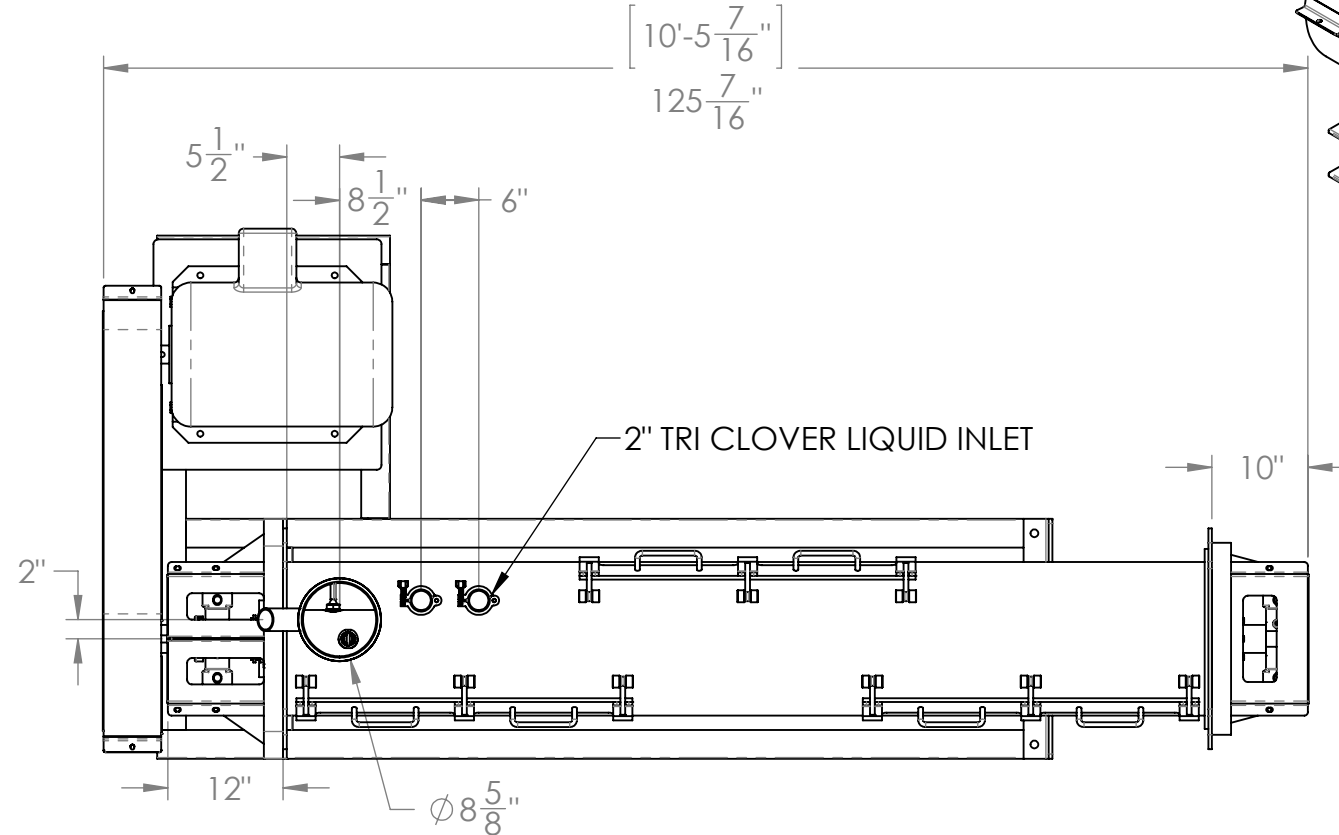
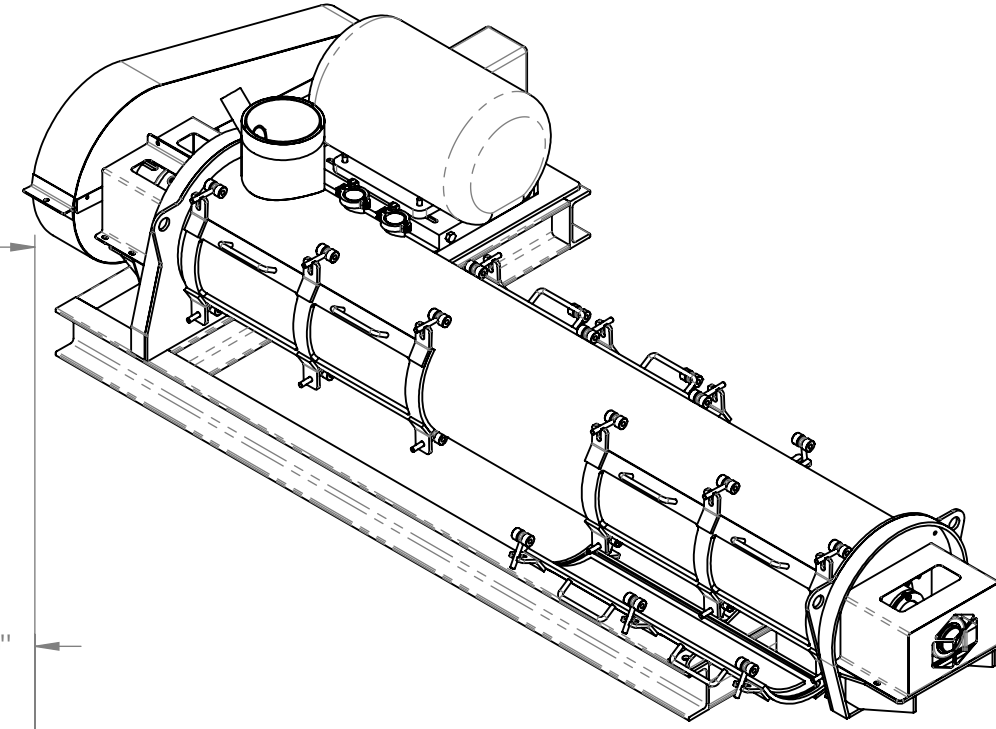


GENERAL NOTES:
SCOTT 16" x 96" HIGH SPEED BLENDER
 3/8" MIXER TUBE WITH 3/8" ENDPLATES
 316 STAINLESS STEEL PRODUCT CONTACT
 EXTERIOR FINISH: STEEL-IT
 INTERIOR FINISH: STANDARD MILL

DRIVE ASSEMBLY:
 30 HP MOTOR TEFC 3PH/460V/60HZ/1800RPM VFD
 FINAL SPEED @ 60HZ: 600RPM

AGITATOR:
 6" SOLID SHAFT WITH (60) BEATER BLADE 7/8 X 6-1/2
 2-15/16" DRIVE END BEARING, DODGE S2000
 2-15/16" IDLE END BEARING, DODGE S2000
 SEALS: SEAL 2-15/16" GRAPHITE PACKING GLAND (3)
 CCW AGITATOR ROTATION

ACCESS DOORS: (3) 8x32" DOORS WITH MILLED DOOR FRAME
 & 3/8X1/2"D" EPDM SEAL



DETAIL A
 SCALE 1 : 10

CUSTOMER: ENVIRAPAC MONTICELLO
QUOTE NUMBER: 16-0185REV2

PROPRIETARY AND CONFIDENTIAL
 THIS DRAWING AND ALL DESIGNS, DETAILS, INVENTIONS OR DEVELOPMENTS COVERED THEREBY ARE CONFIDENTIAL AND THE EXCLUSIVE PROPERTY OF SCOTT EQUIPMENT COMPANY WHICH RESERVES ALL PATENTS OR OTHER RIGHTS. COPYING, REPRODUCTION OR DUPLICATION, IN WHOLE OR IN PART, IS FORBIDDEN UNLESS EXPRESSLY AUTHORIZED BY SCOTT EQUIPMENT COMPANY. THIS DRAWING AND ANY SUCH COPIES SHALL BE RETURNED WHEN REQUESTED AND USED SUBJECT TO ABOVE CONDITIONS ONLY ON AUTHORIZED COMPANY WORK.

UNLESS OTHERWISE SPECIFIED:	NAME	DATE
DIMENSIONS ARE IN INCHES	CREATED BY	LMS 08/25/16
TOLERANCES:	ENG APPR	
FRACTIONAL ±	SALES APPR	
ANGULAR: MACH ±1°		
BEND ±1°		
TWO PLACE DECIMAL ±.03		
THREE PLACE DECIMAL ±.010		
JOB NO.		
MATERIAL		
FINISH		
DO NOT SCALE DRAWING		

604 5th Avenue NW
 New Prague, MN 56071
 952-758-2591

SCOTT
 EQUIPMENT COMPANY

TITLE:
**1696 HIGH SPEED BLENDER-
 BIDIRECTIONAL AUGER**

SIZE	DWG NUMBER	REV
B	16199 1696 HSB	D

SCALE: 1:20 WEIGHT: 3045.3 SHEET 1 OF 1

