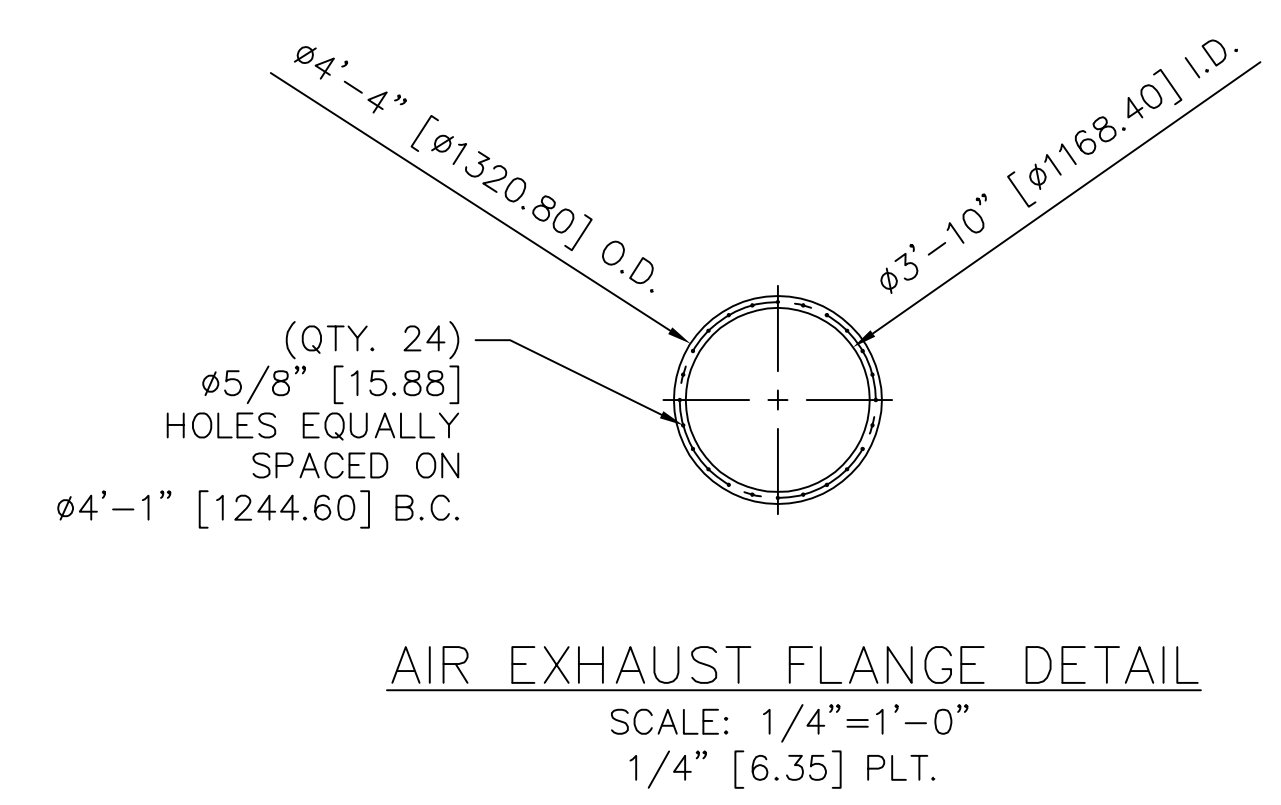
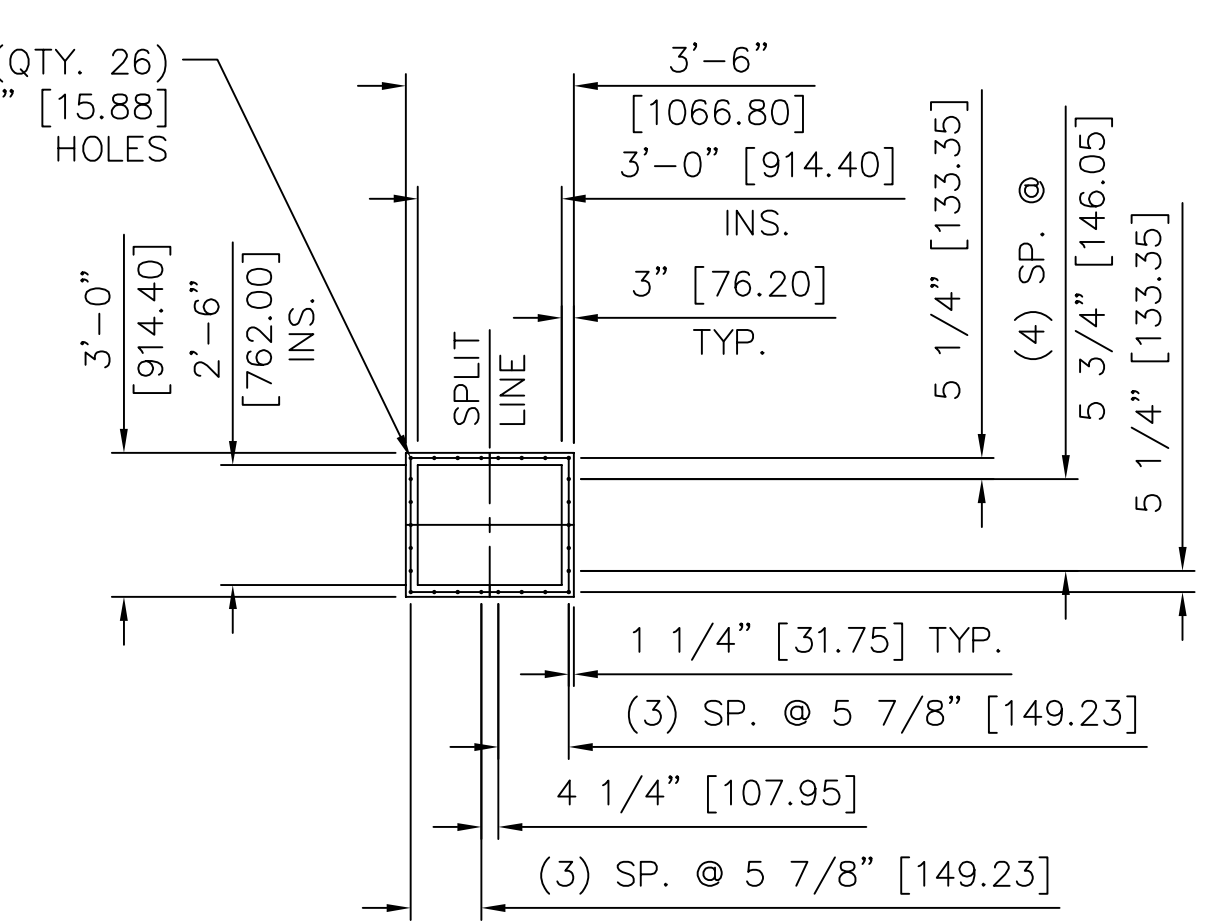
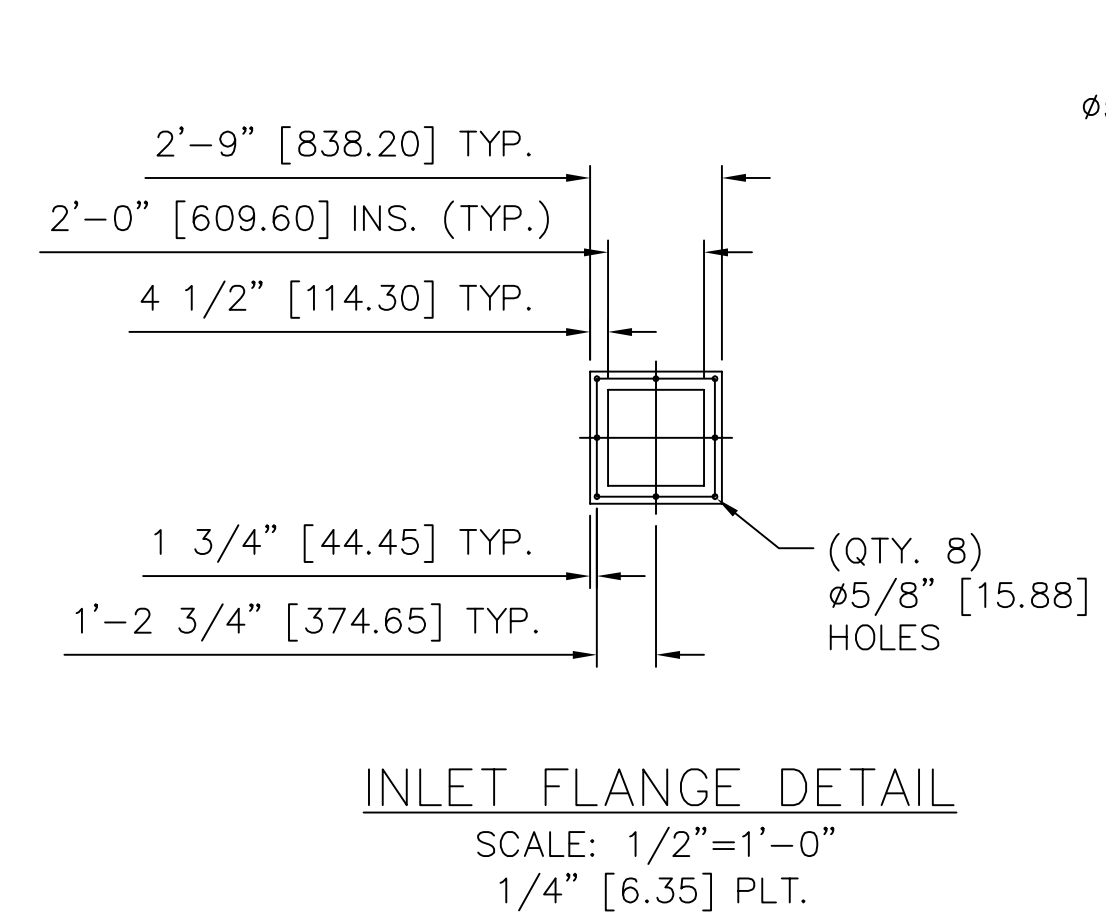
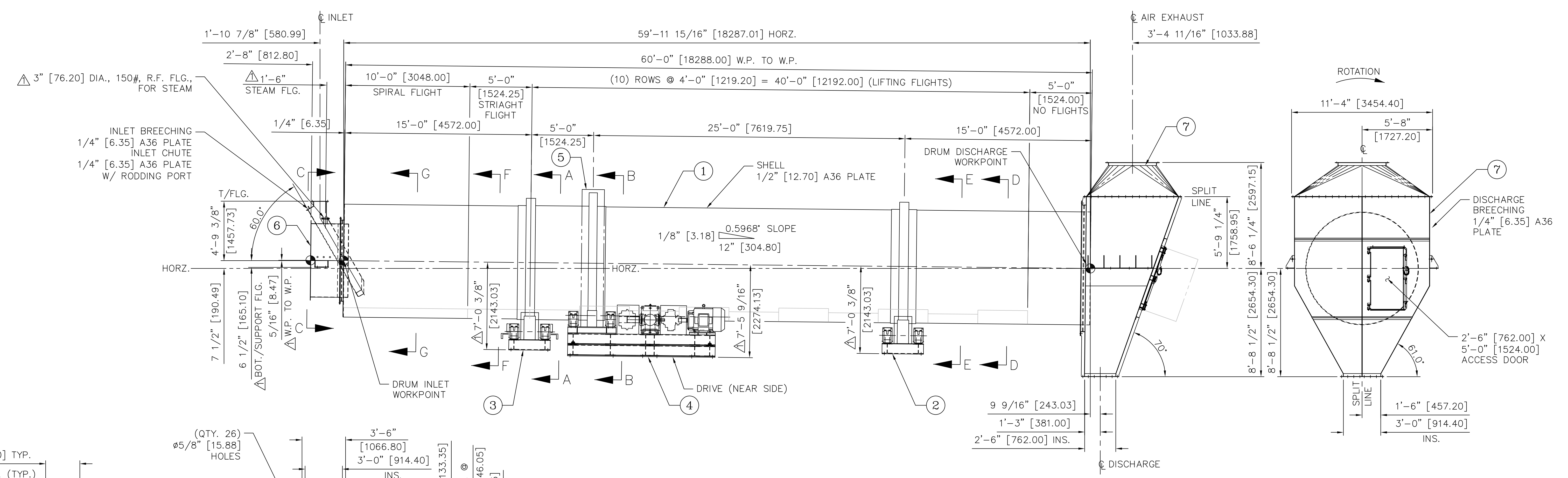
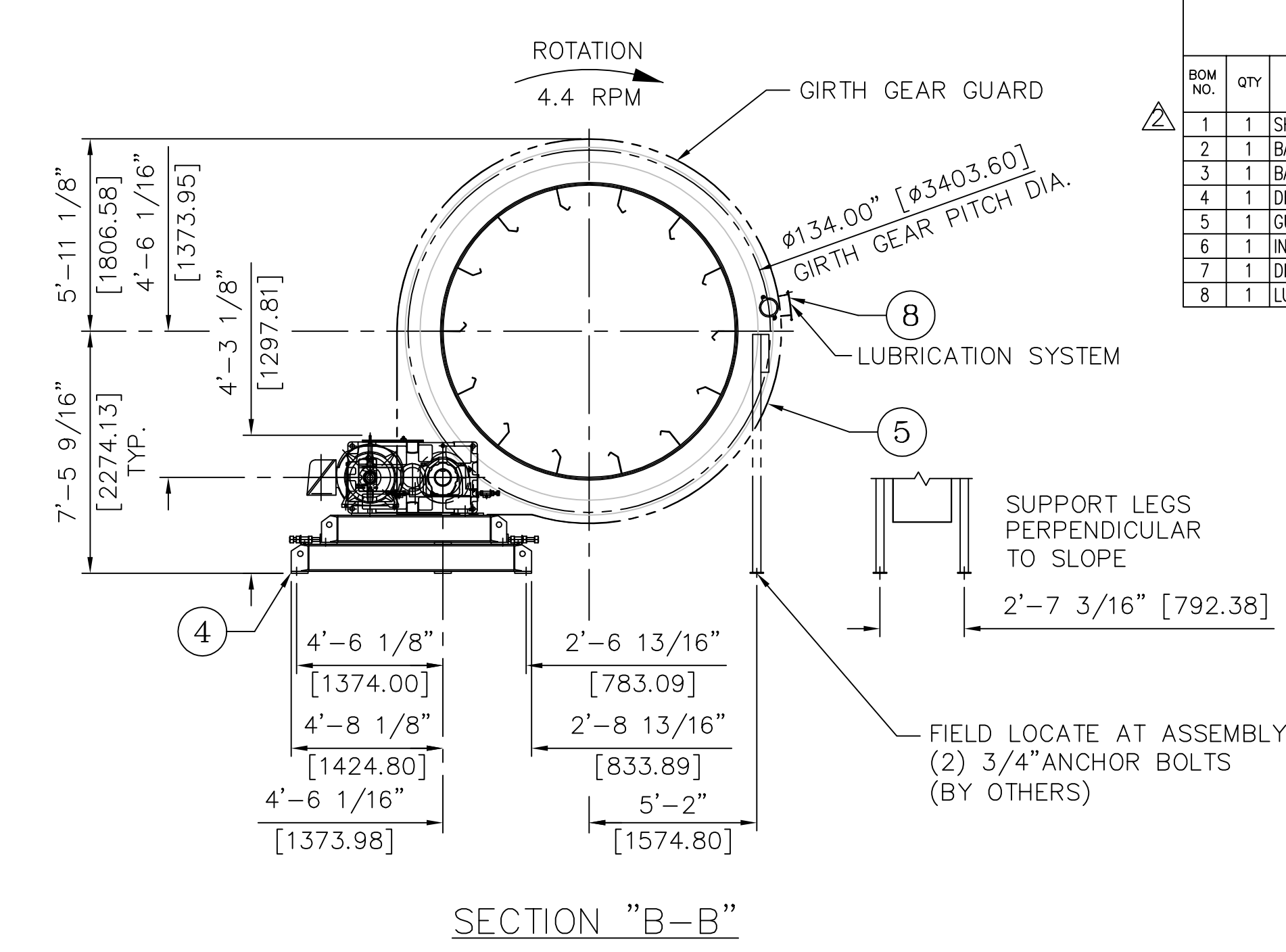
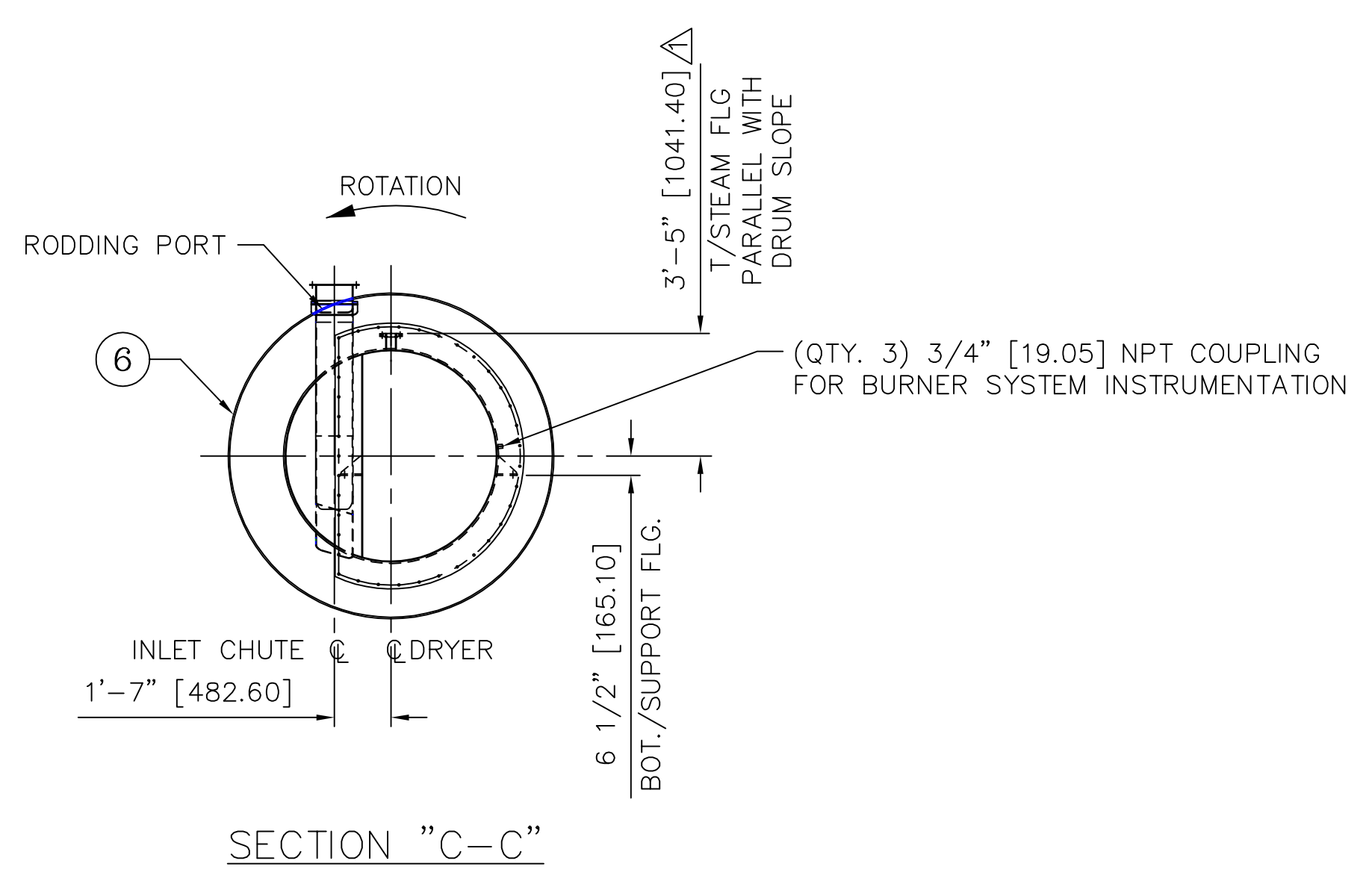
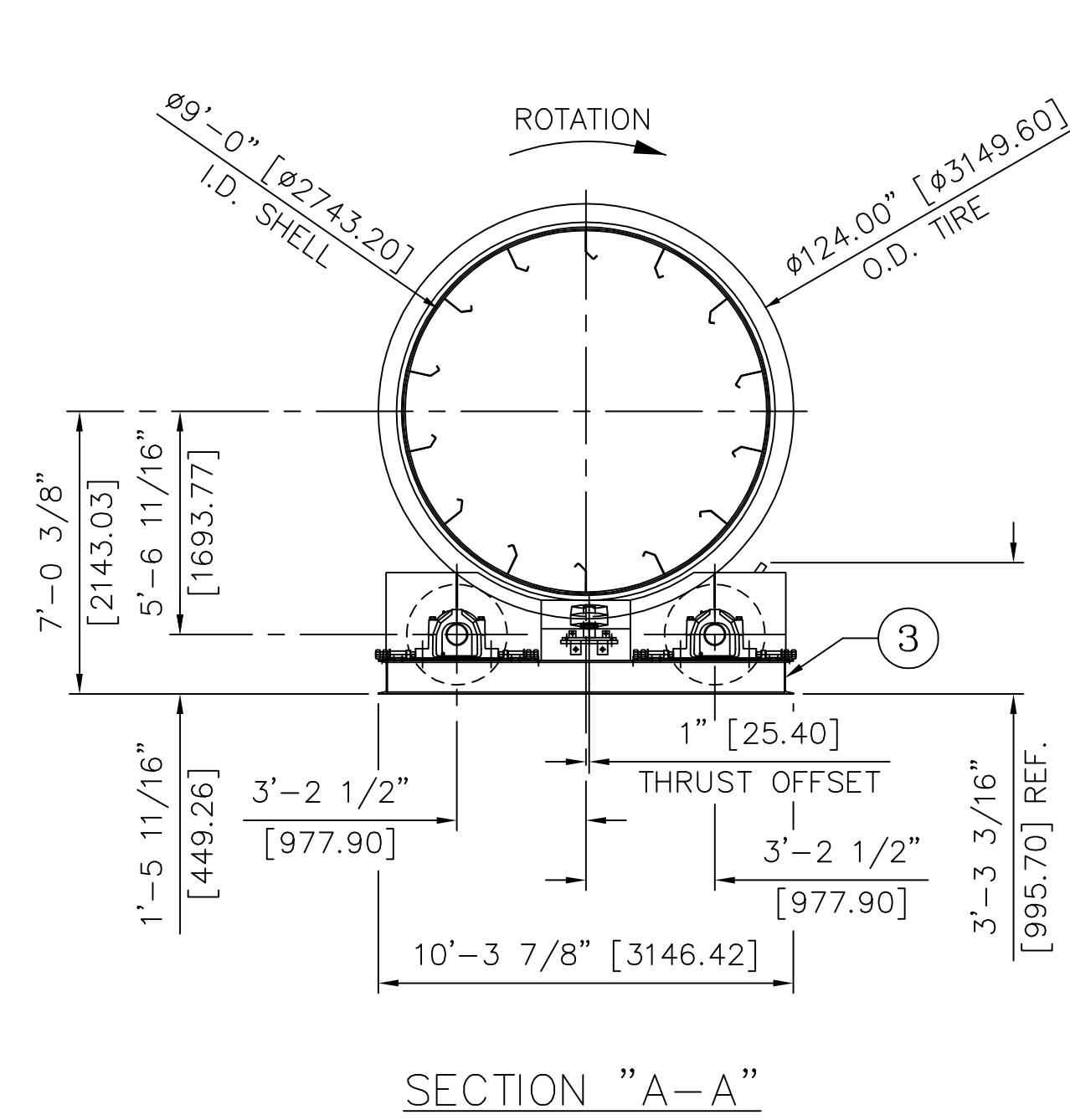


PARTS LIST

BOM NO.	QTY	MATERIAL DESCRIPTION	ITEM NUMBER
1	1	SHELL_ASSY, DRYER, 9'-0" I.D., 60'-0" LG., MATL>	1156094
2	1	BASE, TRUNNION ASSEMBLY, W/O THRUST, DRUM>	1156110
3	1	BASE, TRUNNION ASSEMBLY, W/THRUST, DRUM>	1156059
4	1	DRIVE ASSY, W/JACK_SHAFT_MOUNTED_PINION>	1156126
5	1	GUARD, GIRTH ASSY, DRUM, 9'-0" I.D.	1156147
6	1	INLET ASSY, DRUM, 9'-0" I.D.	1156157
7	1	DISCH ASSY, DRUM, 9'-0" I.D.	1156159
8	1	LUBRICATION SYSTEM, GEAR, SCHEMATIC>	1156162



**FEECO CERTIFIED PRINT**  
ORDER NO. 3371 DATE 06/10/14  
BY R. LOOCK SERIAL NO. 02013444

UNLESS OTHERWISE SPECIFIED DIMENSIONS ARE IN INCHES. THE FOLLOWING TOLERANCES APPLY:  
DECIMAL DIMENSIONS - XX ±.1"  
- XXX ±.05"  
- XXXX ±.01"  
FRACTIONAL DIMENSIONS - XX ±.01"  
- XXX ±.015"  
- XXXX ±.01"  
ANGULAR DIMENSIONS - ±.5°  
INTERPRET DIM AND TOL PER ASME Y14.5M - 1994

THIS DRAWING AND THE INFORMATION CONTAINED HEREIN IS SUBMITTED CONFIDENTIALLY AND IS THE PROPERTY OF FEECO INTERNATIONAL. REPRODUCTION OR DISCLOSURE OF THE CONTENT OF THIS DRAWING (OR ANY PORTION THEREOF) FOR ANY PURPOSE MUST BE APPROVED IN WRITING BY FEECO INTERNATIONAL.

THIRD ANGLE PROJECTION

REV	DATE	DESCRIPTION	BY	APPRV
3	06/10/14	UPDATED PAINT NOTE	BWJ	RL
2	03/27/14	ADDED BOM. SENT CERTIFIED	LV	RL
1	12/11/13	REVISED PER CUSTOMER, SENT CERTIFIED	BWJ	RL
0	10/23/13	SUBMITTED FOR APPROVAL	BWJ	RL

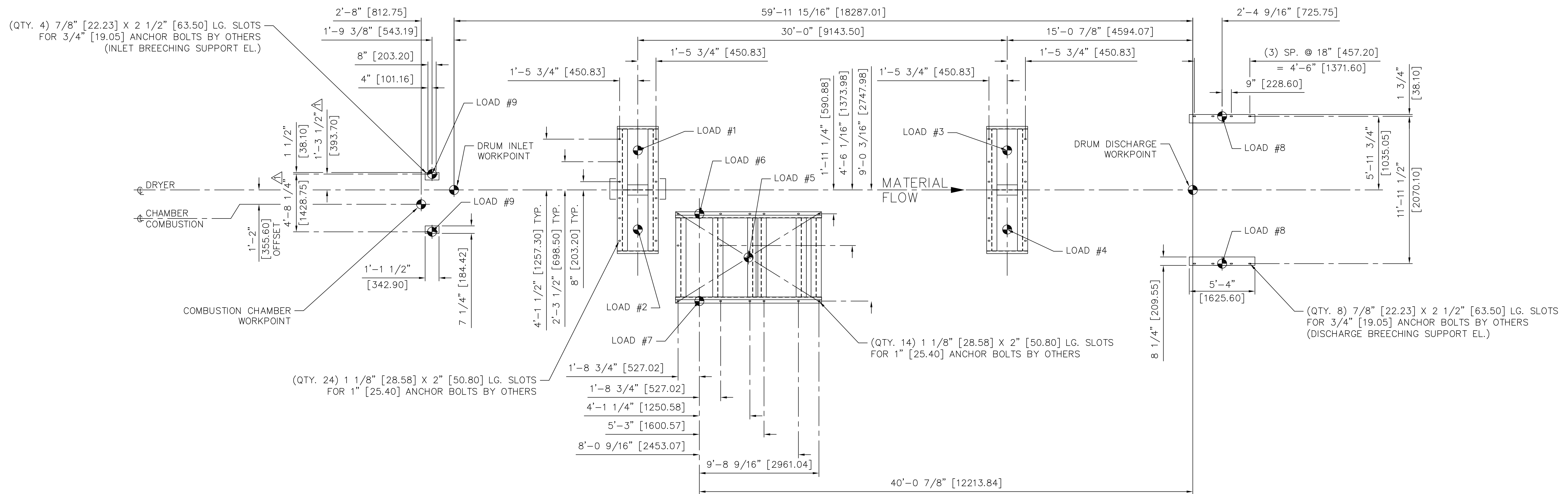
USED ON: 3371/9562-0000

DRAWN	DATE	TITLE	WEIGHT (U.S. LBS)	SIZE	DWG. NO.	REV:
BWJ	09/30/13	GENERAL ARRANGEMENT PELLET ROTARY DRYER DRUM, D-601 9'-0" I.D. X 60'-0" LG., (CO-CURRENT) 3/8" A36 STEEL CONST. SULVARIS - VITASUL PROJECT	0.00	D	1155689	3

GREEN BAY, WISCONSIN, U.S.A.  
(920)469-5100 FAX: 469-5110  
(800)373-9347

SCALE: 1/4"=1'

SHEET 1 OF 2



ANCHOR BOLT PLAN

**NOTE: PAINT (DRUM, INLET & DISCHARGE BREECHINGS)**

PAINT PREP: STANDARD SURFACE PREP SSPC-SP-6 STEEL GRIT  
 FINISH COAT: EQUIPMENT - SHERWIN WILLIAMS B5952 SILVER BRITE  
 HI HEAT PAINT (<400 °F TEMP. RATING)  $\Delta$   
 COLOR - SILVER

**NOTE: PAINT (TRUNNION BASES, GUARDS)**

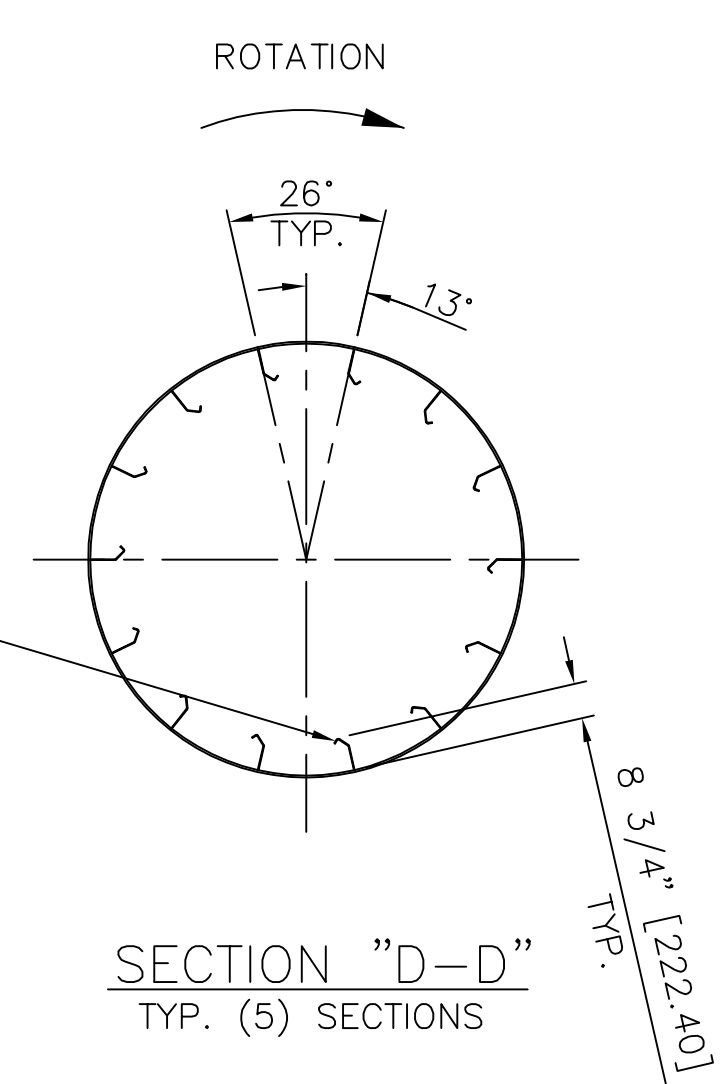
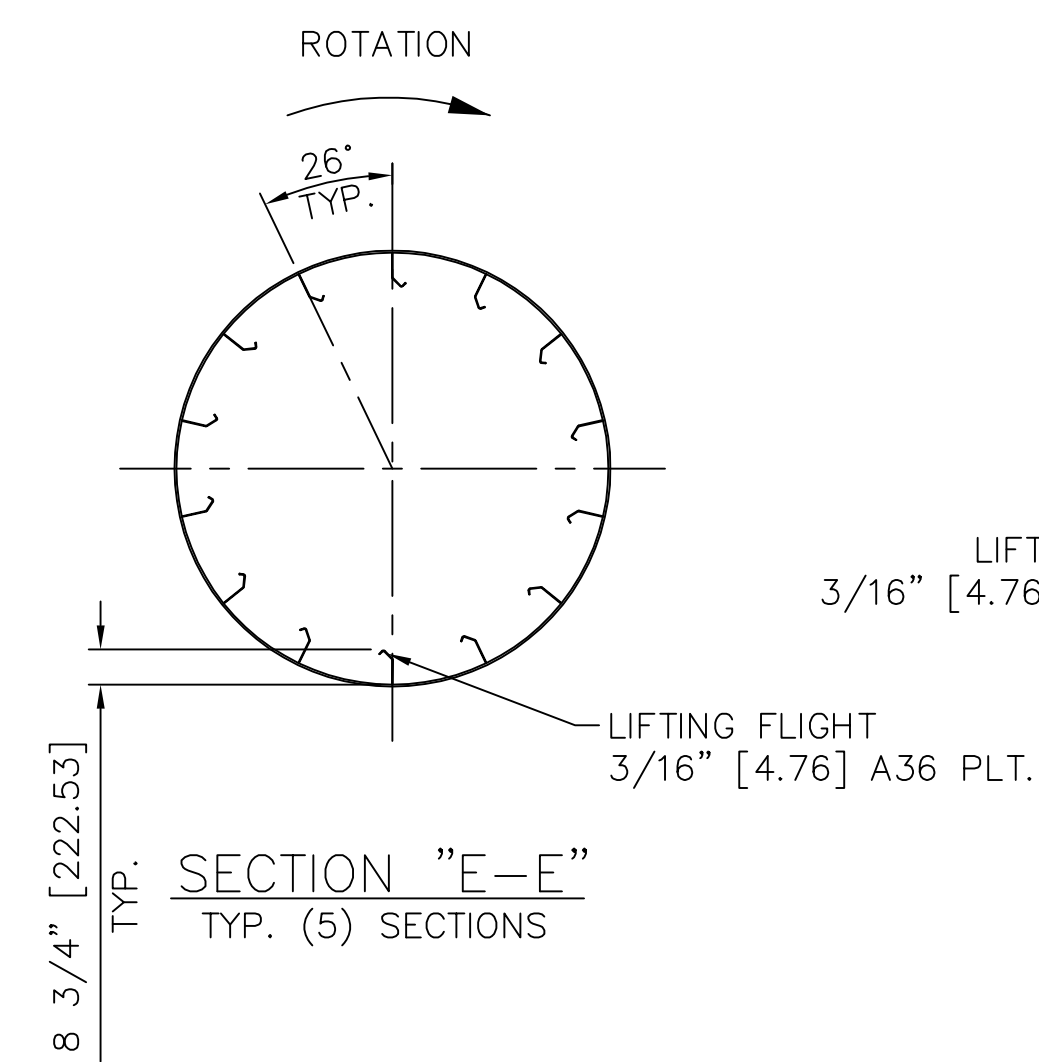
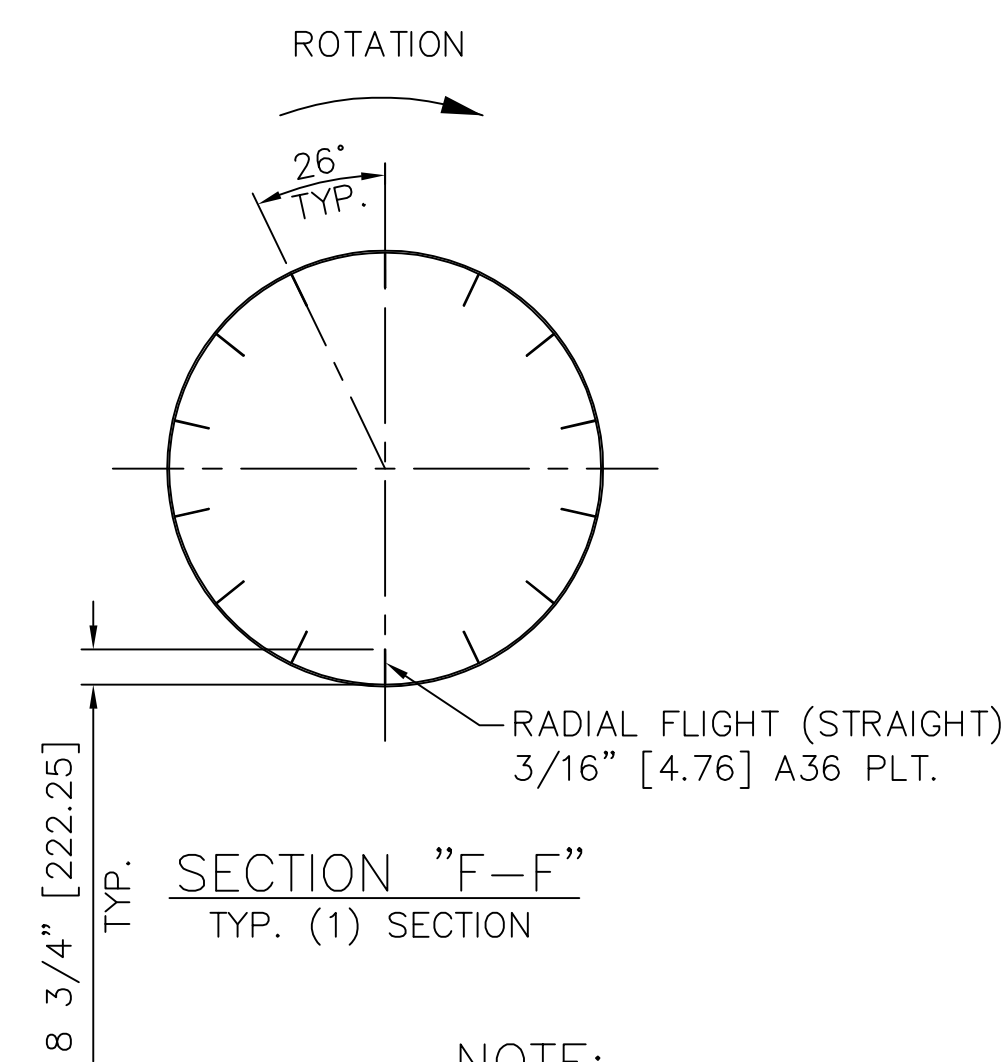
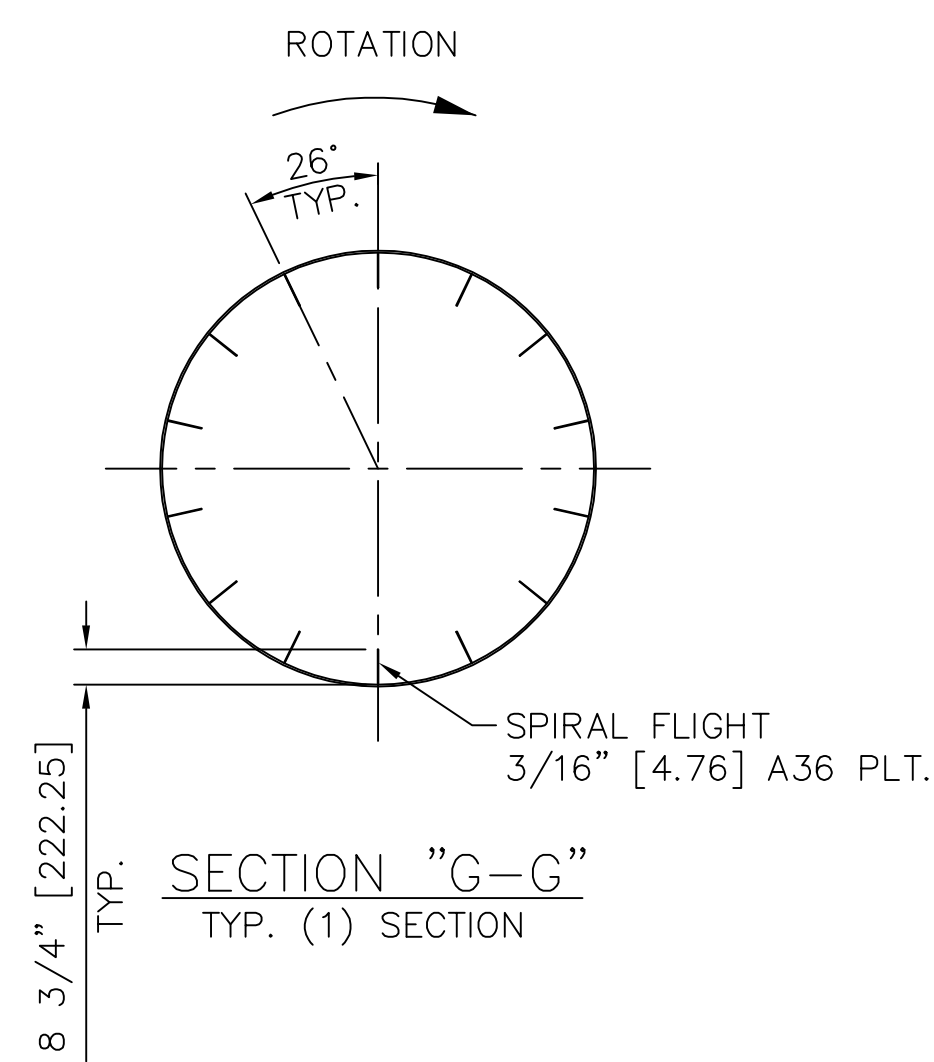
PAINT PREP: STANDARD SURFACE PREP SSPC-SP-6 STEEL GRIT  
 PRIMER COAT: SHERWIN WILLIAMS RED STEEL SPEC  
 UNIVERSAL PRIMER (B50RW3)  
 FINISH COAT: EQUIPMENT - SHERWIN WILLIAMS KEM 4000, HIGH SOLIDS ACRYLIC  
 COLOR - BLUEPRINT BLUE (SW4056)  
 FINISH COAT: GUARDS - SHERWIN WILLIAMS KEM 4000, HIGH SOLIDS ACRYLIC  
 COLOR - SAFETY YELLOW

VENDOR SUPPLIED COMPONENTS COME WITH THEIR STANDARD PAINT SYSTEM

LOADS SUMMARY	D		L		I	
	vert	hor	vert	hor	vert	hor
Load #1	26.0	1.0**	18.0	1.0**	20.0	1.0**
Load #2	26.0	1.0**	9.0	1.0**	16.0	1.0**
Load #3	26.0	1.0**	18.0	1.0**	20.0	1.0**
Load #4	26.0	1.0**	9.0	1.0**	16.0	1.0**
Load #5	14.0		4.0			
Load #6			27.0	-11.0*	14.0	-6.0*
Load #7			2.0	-11.0*	1.0	-6.0*
Load #8	2.0		1.0		1.0	
Load #9	2.0		1.0		1.0	

Notes:

- All loads are in kips.
- No factors or reductions have been applied to the loads.
- Loads are worst case for locations shown.
- A negative magnitude for vertical loads indicates uplift.
- \*If value is negative, direction of load is perpendicular to the drum centerline, towards drum; if value is positive, direction of load is away from drum.
- \*\*Direction of load is parallel to drum centerline, towards drum discharge
- D = dead load L = live load I = impact load



**NOTE:**  
 SECTION VIEWS ARE LOOKING FROM DISCHARGE END WITH A CW ROTATION.

SEE SHEET 1 FOR REVISIONS

<b>FEECO CERTIFIED PRINT</b> ORDER NO. 3371 DATE 06/10/14 BY R. LOOCK SERIAL NO. D20134444	UNLESS OTHERWISE SPECIFIED DIMENSIONS ARE IN INCHES. THE FOLLOWING TOLERANCES APPLY		USED ON: 3371/9562-0000		
	DECIMAL DIMENSIONS -	.XX ±.1*	DRAWN	DATE	
	FRACTIONAL DIMENSIONS -	1/16" ±.01*	BWJ	09/30/13	
	ANGULAR DIMENSIONS -	±.5°	CHECKED	DATE	
THIS DRAWING AND THE INFORMATION CONTAINED HEREIN IS SUBMITTED CONFIDENTIALLY AND IS THE PROPERTY OF FEECO INTERNATIONAL. REPRODUCTION OR DISCLOSURE OF THE CONTENT OF THIS DRAWING (OR ANY PORTION THEREOF) FOR ANY PURPOSE MUST BE APPROVED IN WRITING BY FEECO INTERNATIONAL.		RL	10/23/13	<b>FEECO INTERNATIONAL</b> GREEN BAY, WISCONSIN, U.S.A. (920)469-5100 FAX: 469-5110 (800)373-9347	
THIRD ANGLE PROJECTION		ENGINEER	DATE	TITLE GENERAL ARRANGEMENT PELLET ROTARY DRYER DRUM, D-601 $\Delta$ 9'-0" I.D. X 60'-0" LG., (CO-CURRENT) 3/8" A36 STEEL CONST. SULVARIS - VITASUL PROJECT	
		BL	10/23/13	RELEASED	DATE
				0.00	D
				SCALE: 1/4"=1'	SHEET 2 OF 2

8

7

6

5

4

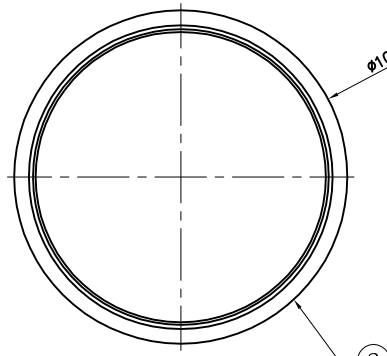
3

2

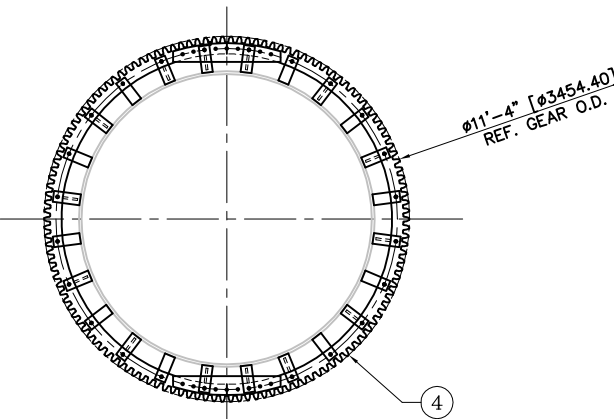
1

PARTS LIST

BOM NO.	QTY	MATERIAL DESCRIPTION	LENGTH	JOB NO.	ITEM NUMBER	TOTAL QUANTITY	WEIGHT
1	1	SHELL, WELDMENT, DRYER, 9'-0" ID X 60'-0" LG, >			1156095	1.00	41258.07
2	1	SHELL, INTERNALS, DRYER, 9'-0" ID X 60'-0" LG, >			1156099	1.00	5812.13
3	2	TIRE, FLOATATION, MOUNTING, ASSY, DRYER, >			1156103	2.00	9452.22
4	1	GEAR, GIRTH, MOUNTING, ASSY, DRYER, 9'-0" ID			1156107	1.00	5340.37
5	8	PLATE, SEAL, LABYRINTH, INLET, DRUM, >			1156189	1.00	25.53
6	40	BOLT, HEX, 1/2"-13NC, GR-5, PLATED	PP-S		114424	40.00	5.74
7	40	NUT, HEX, 1/2"-13NC, GR-5, PLATED	PP-S		1099151	40.00	1.50
8	80	WASHER, FLAT, 1/2", GR-2, PLATED	PP-S		1099136	80.00	3.08
9	40	WASHER, LOCK, SPLIT, 1/2", GR-2, PLATED	PP-S		1099137	40.00	0.52



SECTION "A-A"



SECTION "B-B"

60'-3 3/4" [18383.50] OVERALL

60'-0" [18288.25] REF.

3 3/4" [95.25] REF.

15'-0" [4572.00] REF.

30'-0" [9144.25] REF.

5'-0" [1524.00] REF.

1/2" [12.70] REF.

ROTATION

ROTATION

96'-0" [2926.80] I.D. REF.

10'-1" [3073.40] REF.

9" [228.60] REF.

8" [203.20] REF.

9" [228.60] REF.

USED ON: 3371/9562-0005

UNLESS OTHERWISE SPECIFIED DIMENSIONS ARE IN INCHES. THE FOLLOWING TOLERANCES APPLY

DECIMAL DIMENSIONS - 1/16" ± 0.015"

FRACTIONAL DIMENSIONS - 1/16" ± 0.015"

ANGULAR DIMENSIONS - 1/16° ± 0.015°

INTERPRET DIM AND TOL PER ASME Y14.5M-1994

THIS DRAWING AND THE INFORMATION CONTAINED HEREIN IS SUBMITTED CONFIDENTIALLY AND IS THE PROPERTY OF FEEDCO INTERNATIONAL. USE, REPRODUCTION OR DISCLOSURE OF THE CONTENTS OF THIS DRAWING (OR ANY PORTION THEREOF) FOR ANY PURPOSE MUST BE APPROVED IN WRITING BY FEEDCO INTERNATIONAL.

DRAWN DATE  
GREGM 12/18/13

CHECKED DATE  
LP 12/26/13

ENGINEER DATE  
-----

RELEASED DATE  
-----

**FEEDCO INTERNATIONAL**  
GREEN BAY, WISCONSIN, U.S.A.  
(920)469-5100 FAX: 469-5110  
(800)373-9347

TITLE  
SHELL, ASSY, DRYER, 9'-0" ID, 60'-0" LG, MATL>  
A36

THIRD ANGLE PROJECTION

WEIGHT (U.S. LBS) SIZE  
61899.16 D

DWG. NO. 1156094  
SCALE: 3/8"=1"  
REV: 0  
SHEET 1 OF 1

8

7

6

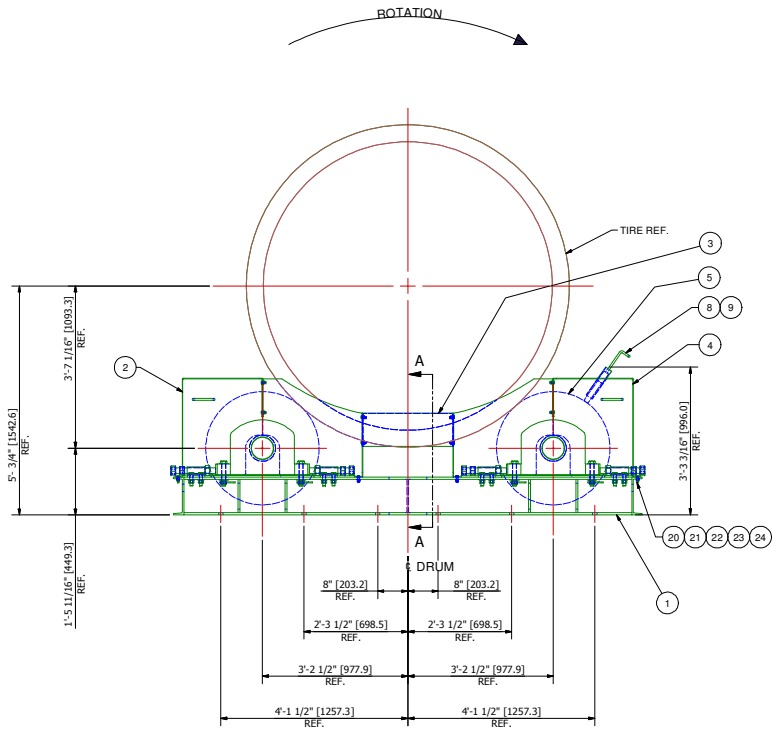
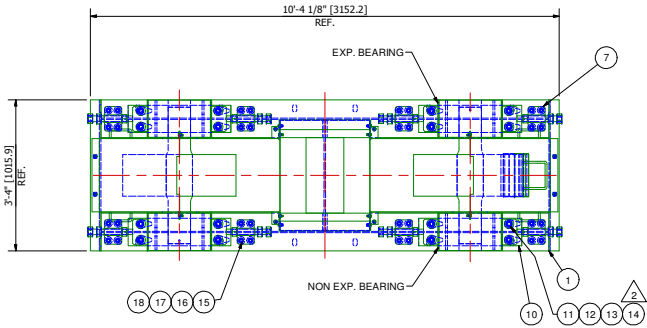
5

4

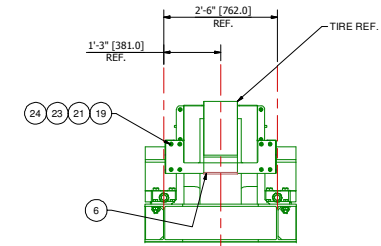
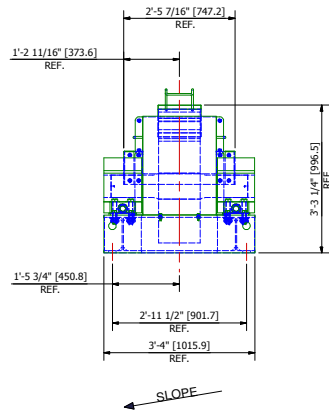
3

2

1



AS VIEWED FROM DISCHARGE END



SECTION "A-A"

NO	QTY	DESCRIPTION	LENGTH	WIDTH	PART	QUANTITY	WEIGHT	LI
1	1	BASE, WELDMNT, TRUNNION, W/O THRUST DRUM>	1156111			1	1384.24	
2	1	GUARD, WHEEL ASSY, W/O LUBE	1156117			1	93.55	
3	2	GUARD, THRUST	1156205	4.36			18.62	
4	1	GUARD, WHEEL ASSY, W/LUBE	1156118			1	99.29	
5	2	TRUNNION WHEEL, W/5-15/16" BEARINGS ASSY	1156112			2	5942.2	
6	2	GUARD, DRUM, TIRE, W/O THRUST	1156300	1.84			7.86	
7	8	BLOCK, PUSH, 4-BOLT, 1-1/2X1.2X1/8"	1120017			8	173.2	
8	1	WEIGHT, GRAPHITE, BLOCK	SXPMM48			1	15.1	*
9	1	BLOCK, GRAPHITE	STZVR			1	3	*
10	4	SLIDE, PLATE, BEARING, 1/4, GA, SST >	1110496	4			17.14	
11	16	BOLT, HCS, 1-8X20X, GR-5	11540	16			26.7	
12	32	WASHER, FLAT, 1/8, GR-2, PLATED	10325	32			5.85	
13	16	WASHER, LOCK, SPLIT, 1/8, GR-2, PLATED	10326	16			1.51	
14	16	NUT, FAB, SELF, HOLD, 1/8"	1153807	16			9.76	
15	32	BOLT, HCS, 3/4-10X3, GR-5, PLATED	11478	32			16.61	
16	32	WASHER, FLAT, 3/4, GR-2, PLATED	10337	32			2.38	
17	32	WASHER, LOCK, SPLIT, 3/4, GR-2, PLATED	10338	32			1.35	
18	32	NUT, HEX, 3/4-10X, GR-5, PLATED	1099153	32			4.44	
19	16	BOLT, HCS, 3/8-16X1, GR-5, PLATED	11372	16			.28	
20	8	BOLT, HCS, 3/8-16X1-1/2, GR-5	11374	8			.52	
21	28	WASHER, FLAT, 3/8, GR-2, PLATED	1099097	28			.33	
22	4	WASHER, BEVEL, 3/8, GR-2, PLATED	1100419	4			.14	
23	24	WASHER, LOCK, SPLIT, 3/8, GR-2, PLATED	1099233	24			.16	
24	24	NUT, HEX, 3/8-16X, GR-5, PLATED	1099149	24			.41	

REV	DATE	DESCRIPTION	BY	APPROV
2	2/13/14	REPLACED BEARING NUTS W/NUT SELF HOLD DWG #1153807	LV	
2	1/8/14	ITEM #15 CHANGE TO NEW VERSION, DWG #1153807	GJM	

USED ON: 3371/9562-0019		REVISION HISTORY	
DRAWN	DATE	TITLE	
GREGM	11/26/2013	BASE, TRUNNION ASSEMBLY, W/O THRUST DRUM>	
CHECKED	DATE		
LP	11/27/2013		
ENGINEER	DATE		
RELEASED	DATE	WEIGHT (U.S. LBS)	DWG NO
		762.17	1156110
		SCALE: 3/4"=1"	SHEET: 1 OF: 1

UNLESS OTHERWISE SPECIFIED DIMENSIONS ARE IN INCHES. THE FOLLOWING TOLERANCES APPLY:

DECIMAL DIMENSIONS: ±.010

FRACTIONAL DIMENSIONS: ±.005

ANGULAR DIMENSIONS: ±.05°

INTERIOR DIMENSIONS TO, FROM AND FROM DIMENSIONS: ±.005

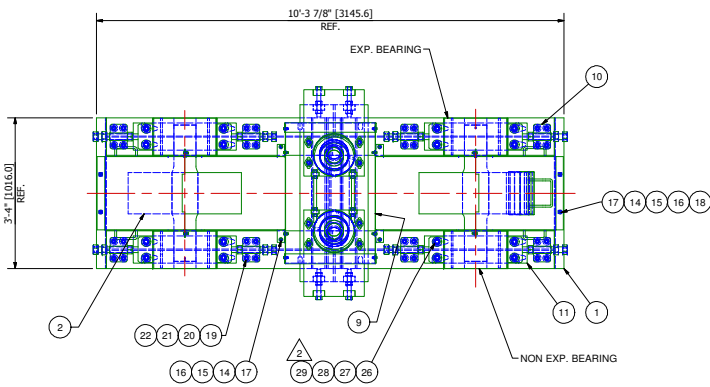
THIS DRAWING AND THE INFORMATION CONTAINED HEREIN ARE THE PROPERTY OF FEEDCO INTERNATIONAL. NO REPRODUCTION OR DISSEMINATION OF THIS DRAWING OR ANY PORTION THEREOF IS PERMITTED WITHOUT THE WRITTEN APPROVAL OF FEEDCO INTERNATIONAL.

THIRD ANGLE PROJECTION

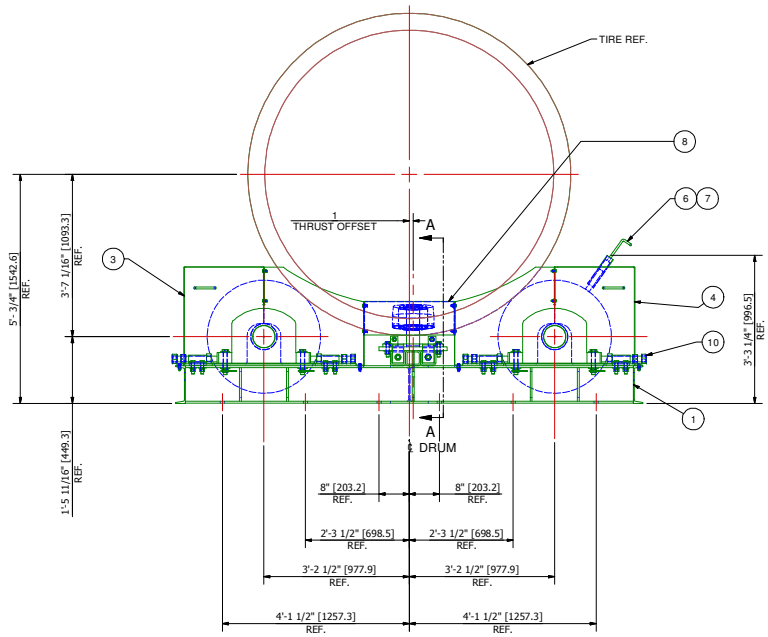
**FEEDCO**  
INTERNATIONAL

GREEN BAY, WISCONSIN, U.S.A.  
(920) 469-5100 FAX: (920) 469-5110  
(800) 373-9347

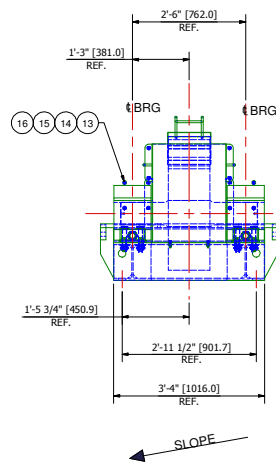
REV: 2



ROTATION

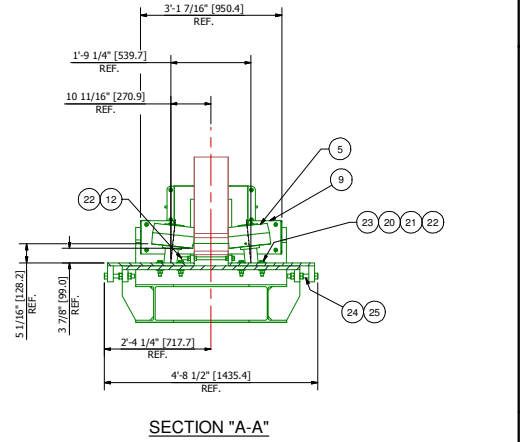


AS VIEWED FROM DISCHARGE END



SLOPE

		PARTS LIST						
NO	QTY	DESCRIPTION	LENGTH	WIDTH	PART	QUANTITY	WEIGHT	LI
1	1	BASE, WELDMENT, TRUNNION, W/THRUST DRUM			1156119	1	9021.42	
2	2	TRUNNION WHEEL, W/5 1/16\"/>						

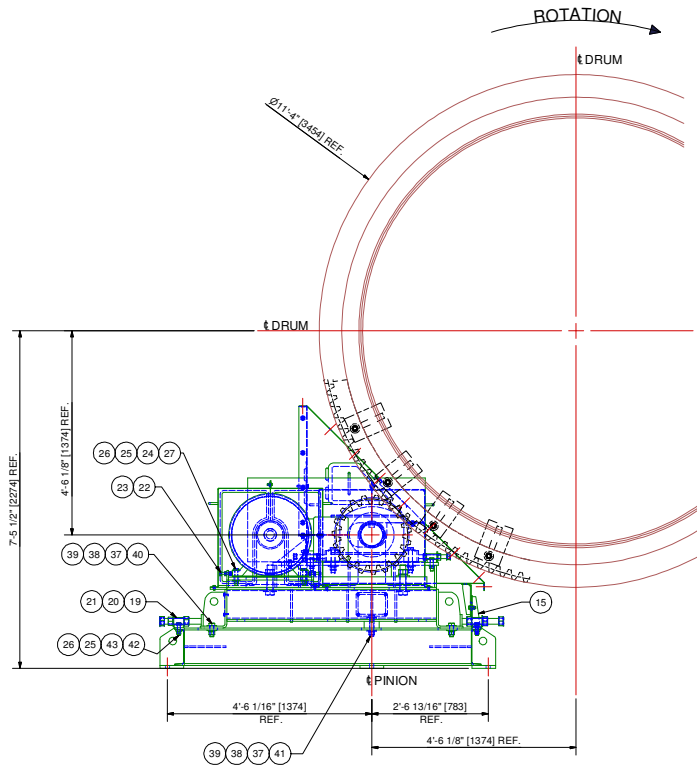
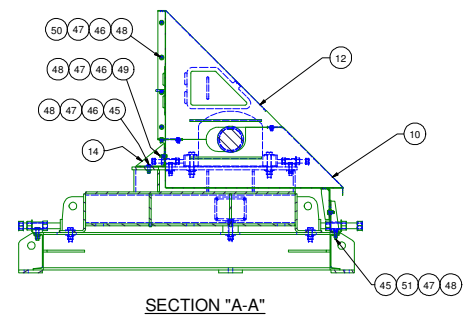
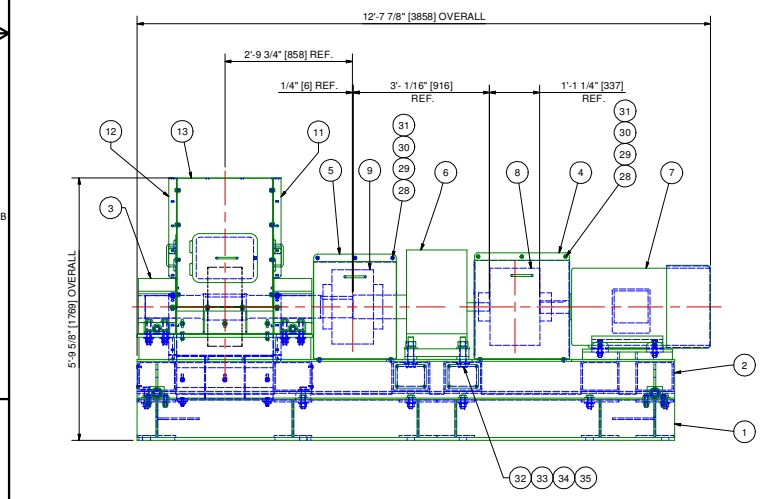
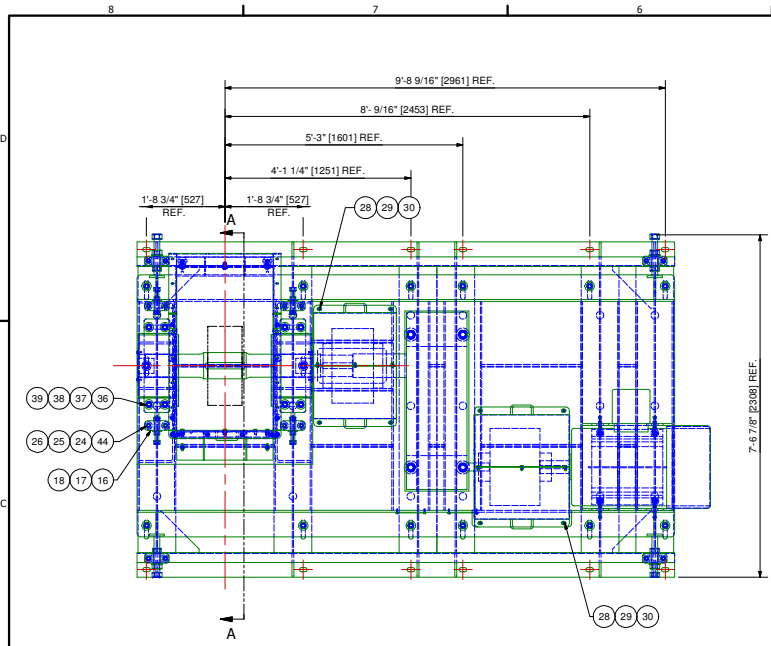


SECTION "A-A"

		REVISION HISTORY		
2	2/13/14	REPLACED BEARING NUTS W/NUT SELF HOLD DWG. #1153807		LV
2	1/8/14	ITEM #29 CHANGED TO NEW VERSION. DWG #1153807		GJM
REV	DATE	DESCRIPTION		BY / APPRV

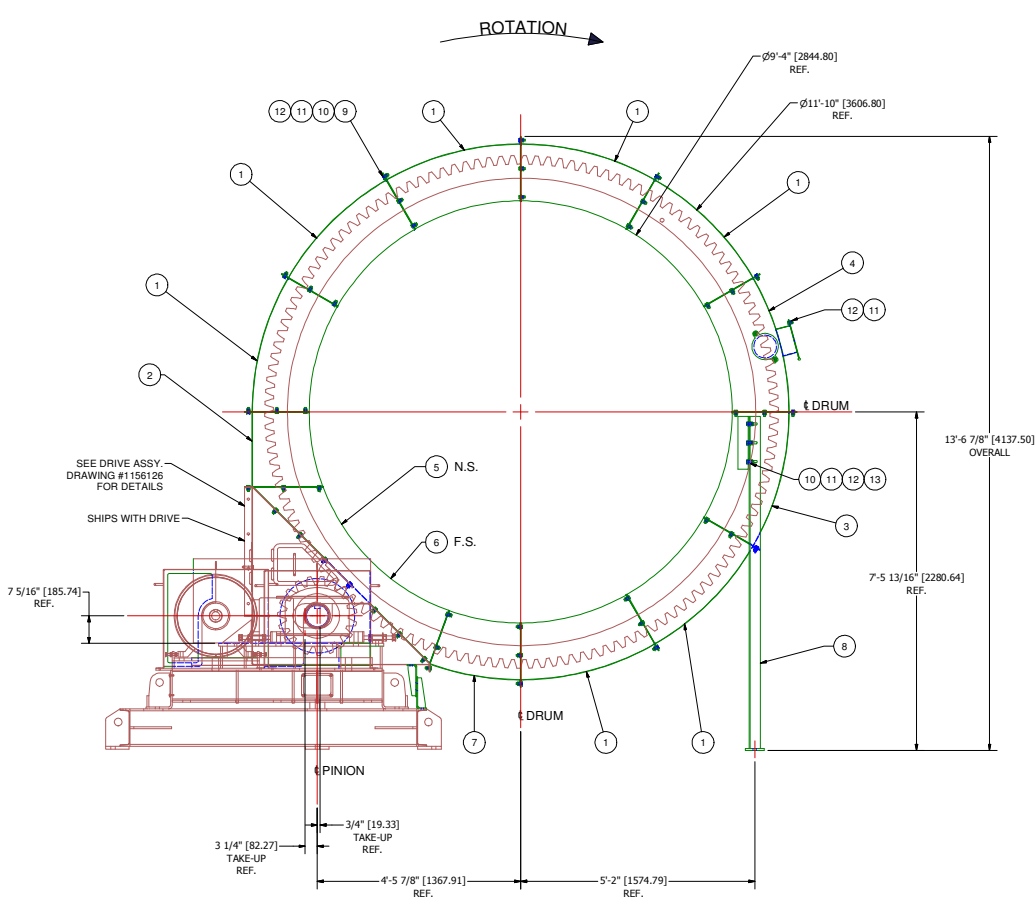
DRAWN		DATE	GREEN BAY, WISCONSIN, U.S.A (920) 469-5100 FAX:(920) 469-5110 (800) 373-9347	
GREGM	11/18/2013		FEECO INTERNATIONAL	
CHECKED	DATE	TITLE		
LP	11/21/2013	BASE, TRUNNION ASSEMBLY W/THRUST DRUM- 9'-0" ID X 60'-0" LG		
ENGINEER	DATE	RELEASED	DATE	REV: 2
			WEIGHT (LBS)	DWG NO. 1156029
			16100.26	11/08/20
			SCALE: 3/4"=1"	SHEET: 1 OF: 1



PARTS LIST								
NO	QTY	DESCRIPTION	LENGTH	WIDTH	PART	QUANTITY	WEIGHT	LI
1	1	BASE LEVELING WELDMENT DRUM 9'-0\"/>						

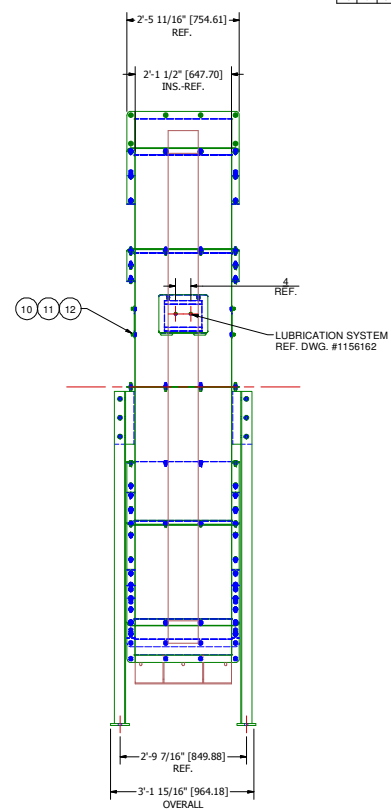
DRAWN GREGM		DATE 12/3/2013				GREEN BAY, WISCONSIN, U.S.A. (920) 469-5100 FAX: (920) 469-5110 (800) 373-9347	
CHECKED LP		DATE 12/17/2013		TITLE DRIVE ASSY. W/JACK SHAFT MOUNTED PINION-> DRUM, 9'-0\"/>			
ENGINEER		DATE		RELEASED		DATE	
THIRD ANGLE PROJECTION		SCALE: 3/4\"/>					

8 7 6 5 4 3 2 1



AS VIEWED FROM DISCHARGED END

PARTS LIST								
NO	QTY	DESCRIPTION	LENGTH	WIDTH	PART	QUANTITY	WEIGHT	LI
1	7	GUARD GIRTH WELDMENT, INTERMEDIATE, >			1156148	7	450.93	*
2	1	GUARD GIRTH WELDMENT, INTERMEDIATE, >			1156149	1	41.29	*
3	1	GUARD GIRTH WELDMENT, INTERMEDIATE, >			1156150	1	78.96	*
4	1	GUARD GIRTH WELDMENT, INTERMEDIATE, >			1156151	1	73.17	*
5	1	GUARD GIRTH WELDMENT, LEFT PANEL, >			1156152	1	23.15	*
6	1	GUARD GIRTH WELDMENT, RIGHT PANEL, >			1156153	1	23.15	*
7	1	GUARD GIRTH WELDMENT, INTERMEDIATE, >			1156154	1	44.77	*
8	2	GUARD GIRTH SUPPORT, LEG, DRUM, 9'-0\"/>						



<small>UNLESS OTHERWISE SPECIFIED DIMENSIONS ARE IN INCHES. THE FOLLOWING TOLERANCES APPLY:          DECIMAL DIMENSIONS: ±.015          FRACTIONAL DIMENSIONS: ±.005          ANGULAR DIMENSIONS: ±.05°          HOLE POSITION: ±.010          HOLE DIA: ±.005</small>		USED ON: 3371/9562-0065 DRAWN: GREGM DATE: 12/11/2013 CHECKED: LP DATE: 12/16/2013 ENGINEER: [Signature] DATE: [Signature] RELEASED: [Signature] DATE: [Signature]		<b>FEECO</b> INTERNATIONAL GREEN BAY, WISCONSIN, U.S.A. (920) 469-5100 FAX: (920) 469-5110 (800) 373-9347	
<small>THIS DRAWING AND THE INFORMATION CONTAINED HEREIN ARE THE PROPERTY OF FEECO INTERNATIONAL. NO REPRODUCTION OR DISSEMINATION OF THIS DRAWING OR ANY PORTION THEREOF IS PERMITTED WITHOUT THE WRITTEN APPROVAL OF FEECO INTERNATIONAL.</small>				TITLE: GUARD GIRTH ASSY, DRUM 9'-0" ID WEIGHT (U.S. LBS): 808.05 SIZE: D DWG NO: 1156147 SCALE: 3/4"=1' SHEET: 1 OF: 1 REV: 0	

8 7 6 5 4 3 2 1

8

7

6

5

4

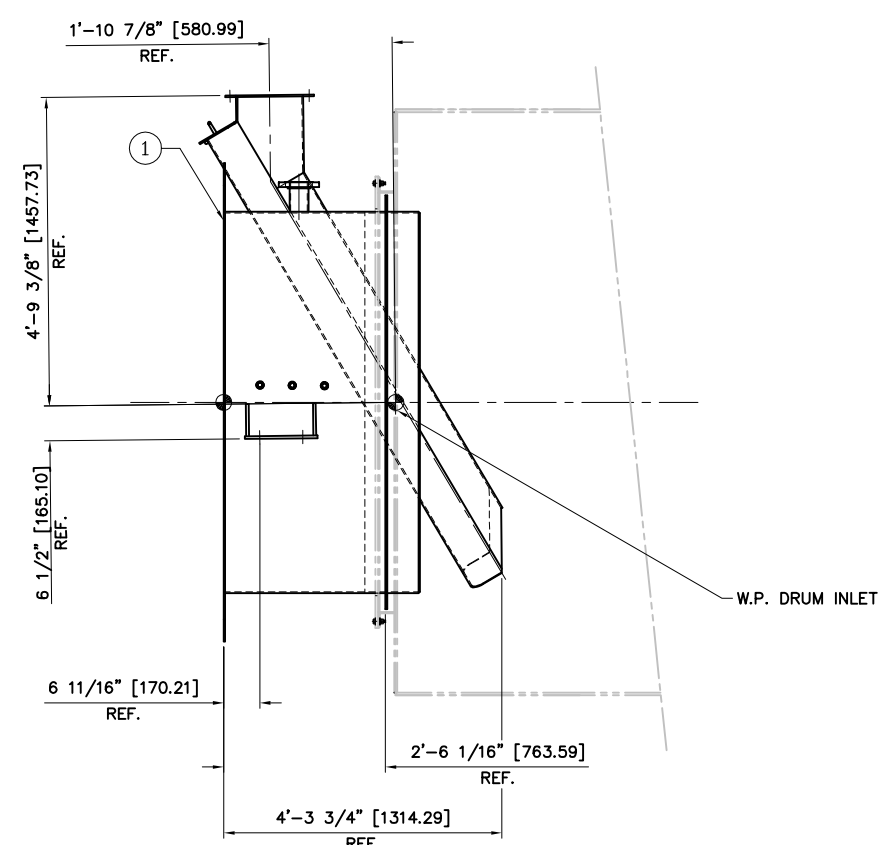
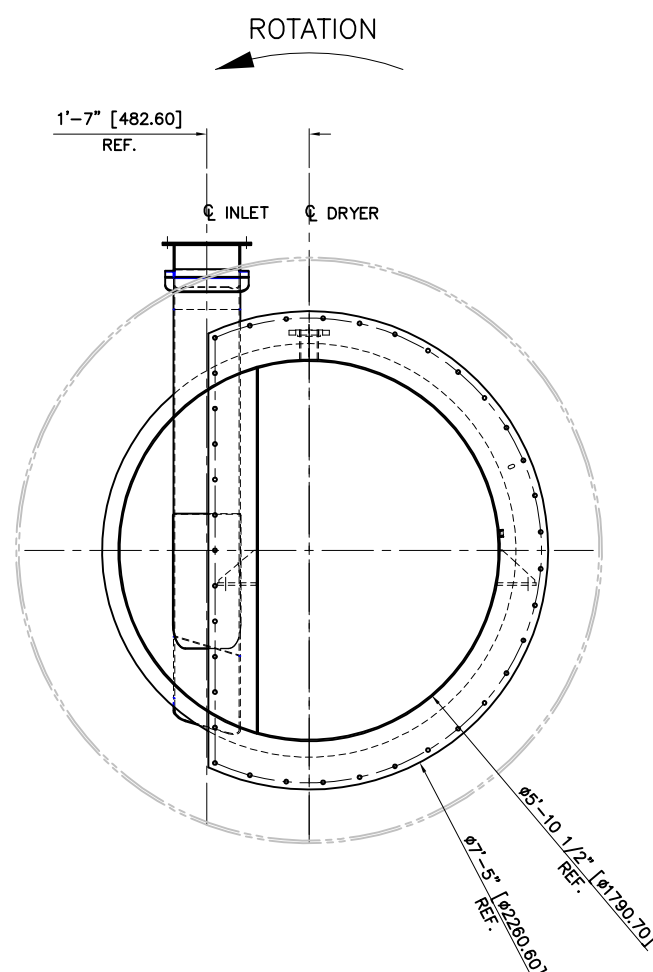
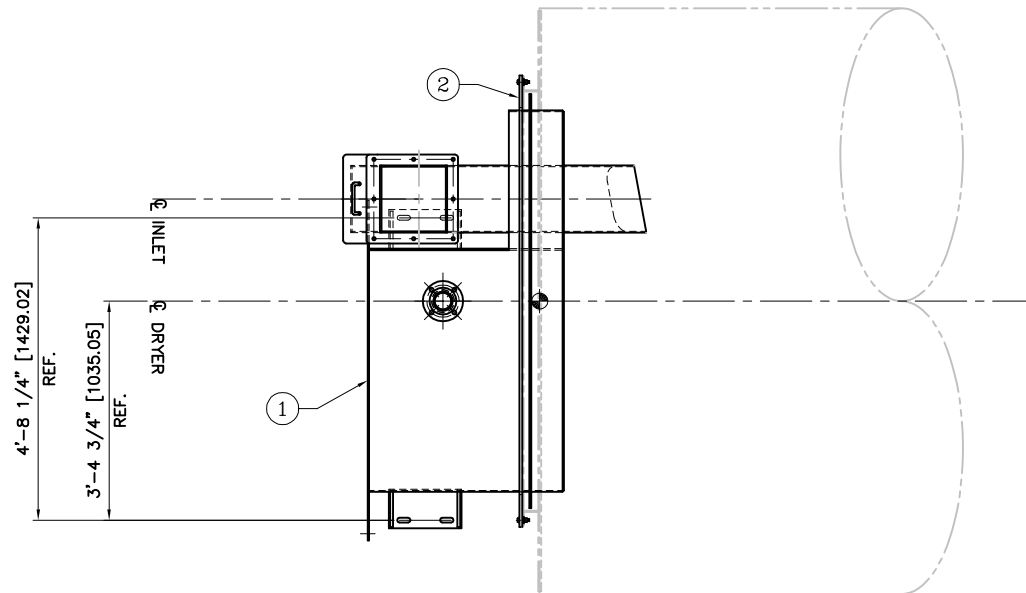
3

2

1

PARTS LIST

ITEM NO.	QTY	MATERIAL DESCRIPTION	LENGTH	JOB NO.	ITEM NUMBER	TOTAL QUANTITY	WEIGHT
1	1	INLET,BREECHING,WELDMENT,DRUM,9'-0"ID.			1156158	1.00	1255.29



USED ON: 3371/9562-0075

UNLESS OTHERWISE SPECIFIED DIMENSIONS ARE IN INCHES. THE FOLLOWING TOLERANCES APPLY: DECIMAL DIMENSIONS - 1/16" FRACTIONAL DIMENSIONS - 1/32" ANGULAR DIMENSIONS - 1/16" INTERPRET DIM AND TOL PER ASME Y14.5M-2009	DRAWN SCOTTL CHECKED LarryV ENGINEER ----- RELEASED -----	DATE 12/05/13 DATE 12/13/13 DATE ----- DATE -----	<b>FEECO</b> INTERNATIONAL GREEN BAY, WISCONSIN, U.S.A. (920)469-5100 FAX: 469-5110 (800)373-9347 TITLE INLET,ASSY,DRUM,9'-0"ID DWG. NO. 1156157 SCALE: 3/4"=1" SHEET 1 OF 1
---	--	--	---

THIS DRAWING AND THE INFORMATION CONTAINED HEREIN IS SUBMITTED CONFIDENTIALLY AND IS THE PROPERTY OF FEECO INTERNATIONAL. USE, REPRODUCTION OR DISCLOSURE OF THE CONTENT OF THIS DRAWING (OR ANY PORTION THEREOF) FOR ANY PURPOSE MUST BE APPROVED IN WRITING BY FEECO INTERNATIONAL.

THIRD ANGLE PROJECTION

8

7

6

5

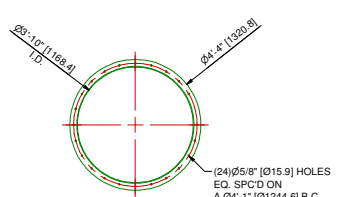
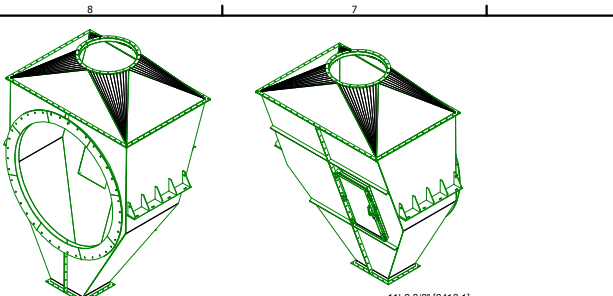
4

3

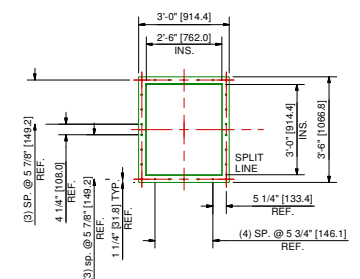
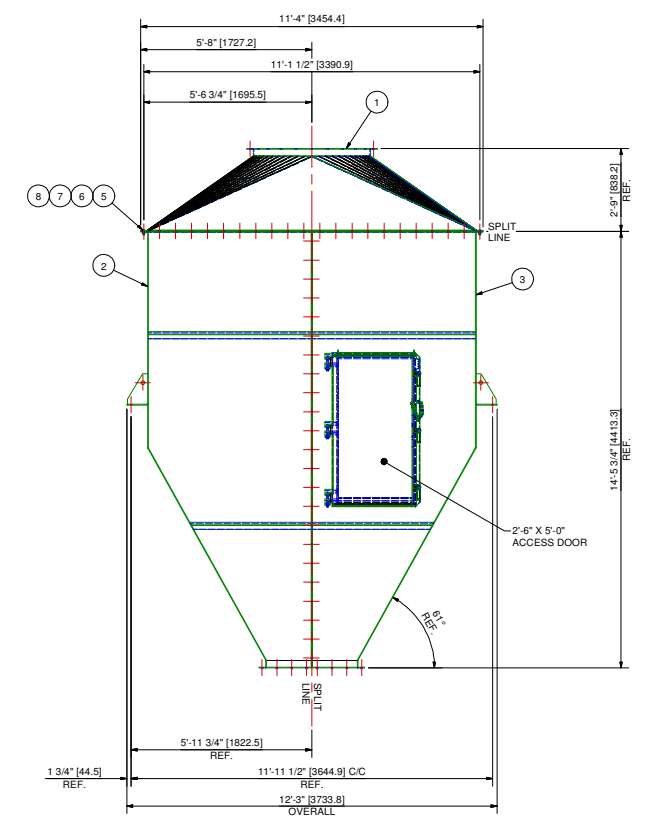
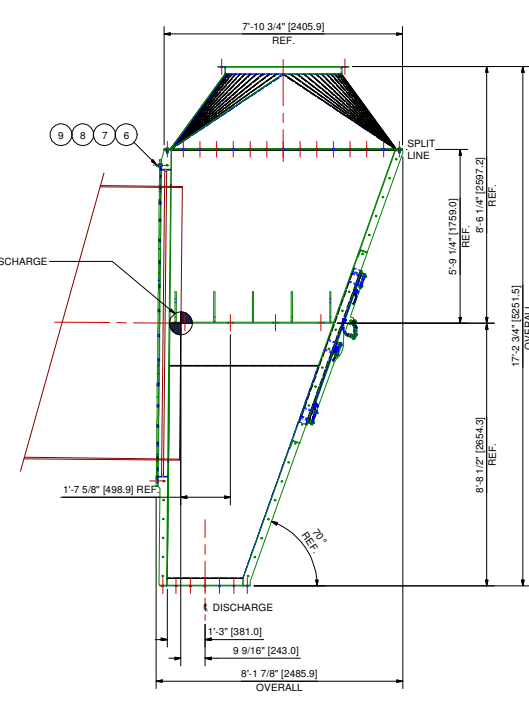
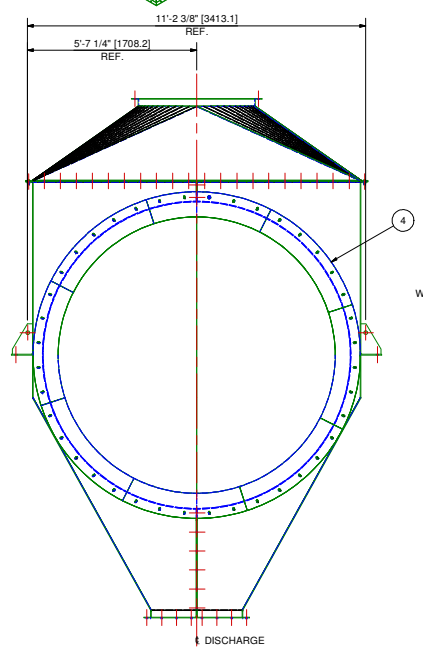
2

1





PARTS LIST								
NO	QTY	DESCRIPTION	LENGTH	WIDTH	PART	QUANTITY	WEIGHT	LI
1	1	DISCHARGE_BREECHING TOP WELDMENT >			1156160	1	1097.12	*
2	1	DISCHARGE_BREECHING LEFT WELDMENT >			1156161	1	2252.89	*
3	1	DISCHARGE_BREECHING RIGHT WELDMENT >			1156190	1	1907.47	*
4	8	SEAL PLATE_DISCH LAMBRYNTH			1156192	8	529.91	*
5	101	BOLT_HEX 1/2-13NCX-1/2 GR-5 PLATED			11423	101	11.71	*
6	141	WASHER_FLAT 1/2 GR-2 PLATED			1099136	141	5.43	*
7	141	WASHER_LOCK_SPLIT 1/2 GR-2 PLATED			1099137	141	1.82	*
8	141	NUT_HEX 1/2-13NC GR-5 PLATED			1099151	141	5.29	*
9	40	BOLT_HEX 1/2-13NCX GR-5 PLATED			11424	40	6.13	*



UNLESS OTHERWISE SPECIFIED DIMENSIONS AND FINISHES, THE FOLLOWING TOLERANCES APPLY: FRACTIONAL DIMENSIONS ± 1/16" DECIMAL DIMENSIONS ± 0.005" ANGULAR DIMENSIONS ± 30'		USED ON: 3371/9562-0093	
DRAWN	DATE	DRAWN	
Scott	12/19/2013	DATE	
CHECKED	DATE	TITLE	
Larry V	1/2/2014	DISCHASSY DRUM 8'-0\"/>	
ENGINEER	DATE	REV: 0	
RELEASED	DATE	WEIGHT (U.S. LBS)	DWG NO
		5917.77	1156159
		SCALE: 1/2"=1'	SHEET: 1 OF: 1

**FEECO** INTERNATIONAL  
GREEN BAY, WISCONSIN, U.S.A  
(920) 469-5100 FAX: (920) 469-5110  
(800) 373-9347

8

7

6

5

4

3

2

1

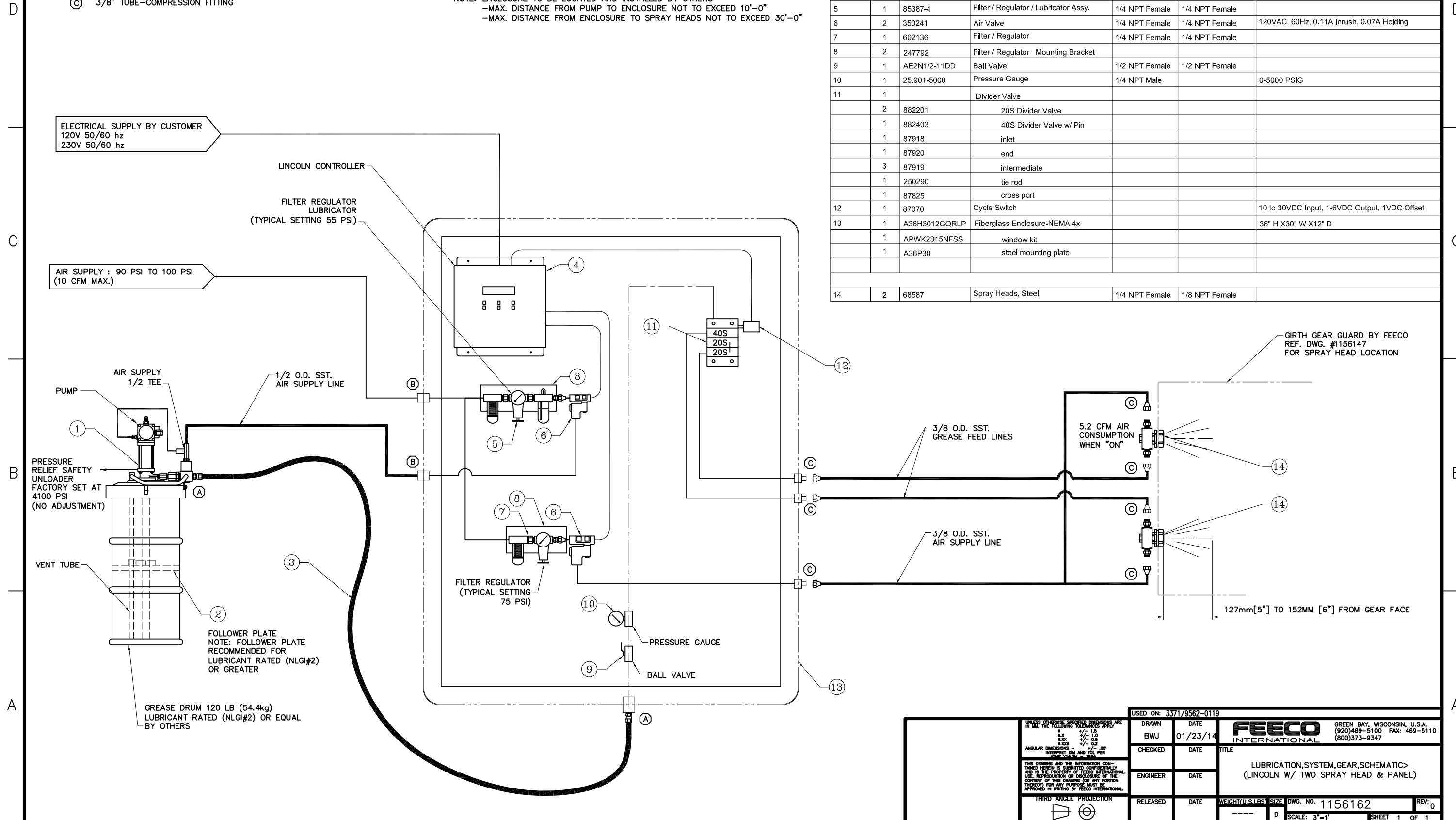
- MAIN SUPPLY LINE - 1/2" O.D. HYDRAULIC TUBING X 0.049" WALL THICKNESS
- FEED LINES - 3/8" O.D. SST.
- AIR SUPPLY - 1/2" O.D. SST.
- ELECTRICAL LINES - 1/2" CONDUIT
- (A) 1/2" NPT (F) CONNECTION
- (B) 3/8" NPT (F) CONNECTION
- (C) 3/8" TUBE-COMPRESSION FITTING

NOTE : FEECO IS PROVIDING ONLY THE ITEMS LISTED IN THE BILL OF MATERIAL. ALL OTHER NECESSARY CONNECTING PIPE, FITTINGS, SUPPORTS & HARDWARE ARE BY OTHERS.

NOTE : SEE FEECO INSTALLATION & OPERATION MANUAL FOR MANUFACTURER'S DETAIL INFORMATION & INSTRUCTIONS REGARDING THE LUBRICATION SYSTEM AND IT'S COMPONENTS.

NOTE: ENCLOSURE TO BE LOCATED AND INSTALLED BY OTHERS  
 -MAX. DISTANCE FROM PUMP TO ENCLOSURE NOT TO EXCEED 10'-0"  
 -MAX. DISTANCE FROM ENCLOSURE TO SPRAY HEADS NOT TO EXCEED 30'-0"

BILL OF MATERIAL						
ITEM #	QTY	VENDOR PART #	DESCRIPTION	INLET SIZE	OUTLET SIZE	INFORMATION
1	1	282288	Pump Station	1/4 NPT Female	1/2 NPT Female	
2	1	83371	Follower Plate			
3	1	x	Hose, main supply 5' (3500psi)	1/2 NPT male	1/2 NPT male	590-8x11355-8-8x11355x60
4	1	85530	Lincoln Controller			120VAC, 60Hz, 125mA
5	1	85387-4	Filter / Regulator / Lubricator Assy.	1/4 NPT Female	1/4 NPT Female	
6	2	350241	Air Valve	1/4 NPT Female	1/4 NPT Female	120VAC, 60Hz, 0.11A Inrush, 0.07A Holding
7	1	602136	Filter / Regulator	1/4 NPT Female	1/4 NPT Female	
8	2	247792	Filter / Regulator Mounting Bracket			
9	1	AE2N1/2-11DD	Ball Valve	1/2 NPT Female	1/2 NPT Female	
10	1	25.901-5000	Pressure Gauge	1/4 NPT Male		0-5000 PSIG
11	1		Divider Valve			
12	2	882201	20S Divider Valve			
13	1	882403	40S Divider Valve w/ Pin			
14	1	87918	inlet			
15	1	87920	end			
16	3	87919	intermediate			
17	1	250290	tie rod			
18	1	87825	cross port			
19	1	87070	Cycle Switch			10 to 30VDC Input, 1-6VDC Output, 1VDC Offset
20	1	A36H3012GQRLP	Fiberglass Enclosure-NEMA 4x			36" H X30" W X12" D
21	1	APWK2315NFSS	window kit			
22	1	A36P30	steel mounting plate			
23	2	68587	Spray Heads, Steel	1/4 NPT Female	1/8 NPT Female	



ELECTRICAL SUPPLY BY CUSTOMER  
 120V 50/60 hz  
 230V 50/60 hz

AIR SUPPLY : 90 PSI TO 100 PSI  
 (10 CFM MAX.)

FOLLOWER PLATE  
 NOTE: FOLLOWER PLATE  
 RECOMMENDED FOR  
 LUBRICANT RATED (NLGI#2)  
 OR GREATER

GREASE DRUM 120 LB (54.4kg)  
 LUBRICANT RATED (NLGI#2) OR EQUAL  
 BY OTHERS

GIRTH GEAR GUARD BY FEECO  
 REF. DWG. #1156147  
 FOR SPRAY HEAD LOCATION

127mm [5"] TO 152MM [6"] FROM GEAR FACE

UNLESS OTHERWISE SPECIFIED DIMENSIONS ARE IN MM. THE FOLLOWING TOLERANCES APPLY

F	± 0.15
M	± 0.10
XX	± 0.05
XXX	± 0.02

ANGULAR DIMENSIONS - ± 0.2°  
 INTERPRET DIM AND TOL PER  
 ASME Y14.5M-2009

THIS DRAWING AND THE INFORMATION CONTAINED HEREIN IS SUBMITTED CONFIDENTIALLY AND IS THE PROPERTY OF FEECO INTERNATIONAL. USE, REPRODUCTION OR DISCLOSURE OF THE CONTENTS OF THIS DRAWING (OR ANY PORTION THEREOF) FOR ANY PURPOSE MUST BE APPROVED IN WRITING BY FEECO INTERNATIONAL.

THIRD ANGLE PROJECTION

USED ON: 3371/9562-0119	
DRAWN	DATE
BWJ	01/23/14
CHECKED	DATE
ENGINEER	DATE
RELEASED	DATE

**FEECO INTERNATIONAL**  
 GREEN BAY, WISCONSIN, U.S.A.  
 (920)469-5100 FAX: 469-5110  
 (800)373-9347

LUBRICATION SYSTEM, GEAR, SCHEMATIC >  
 (LINCOLN W/ TWO SPRAY HEAD & PANEL)

DWG. NO. 1156162  
 SCALE: 3"=1"  
 SHEET 1 OF 1

PARTS LIST

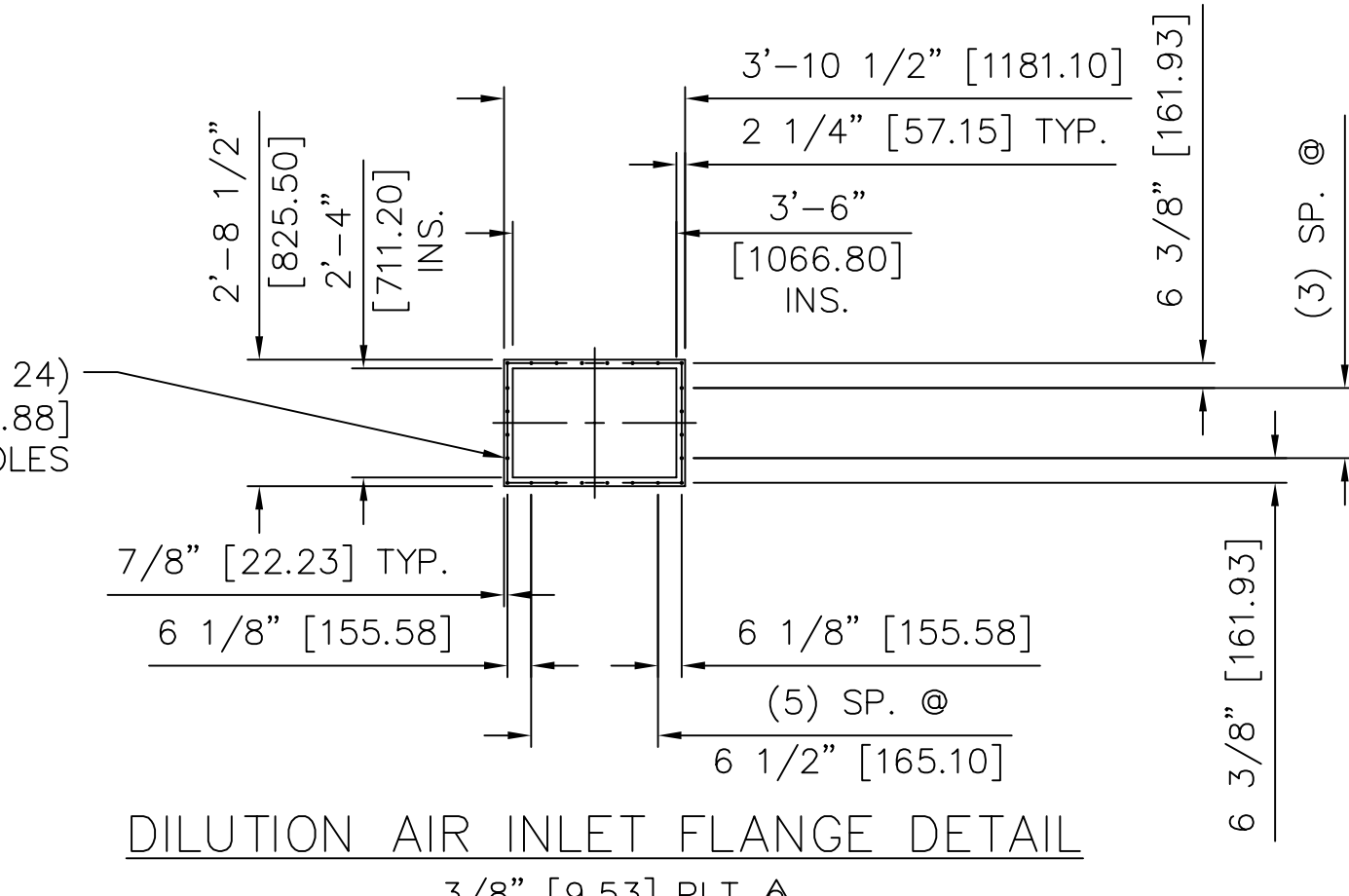
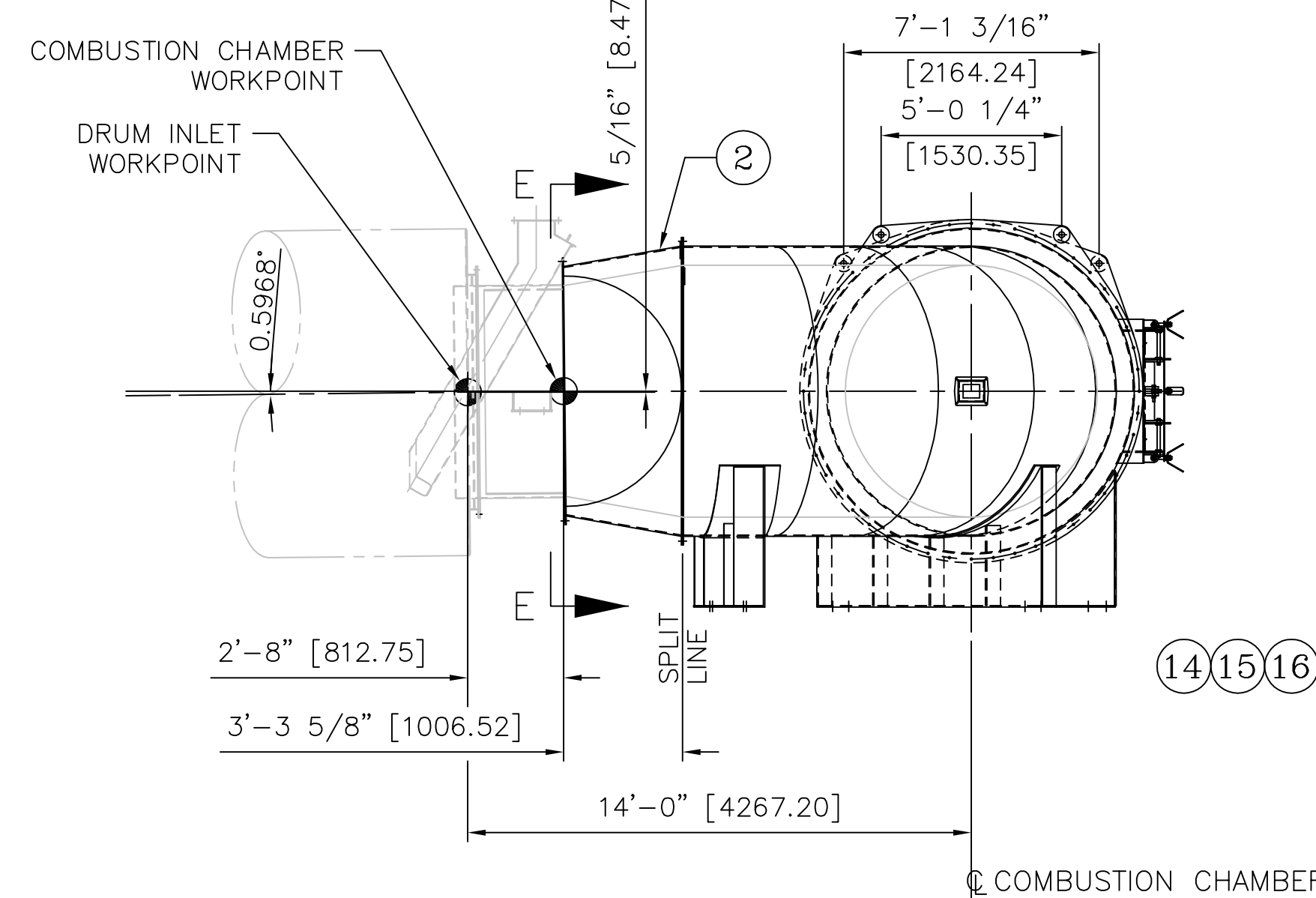
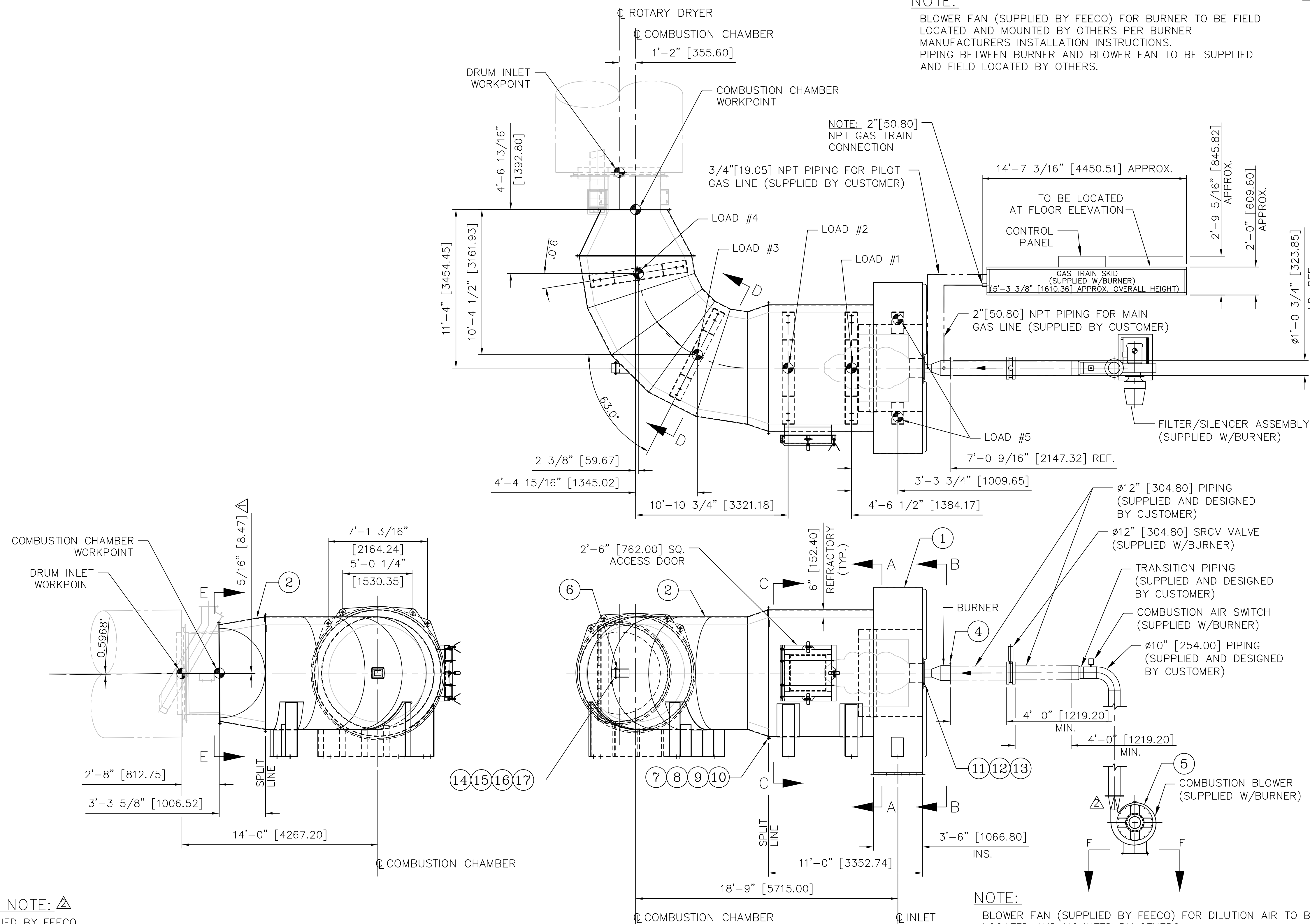
BOM NO.	QTY	MATERIAL DESCRIPTION	LENGTH	JOB NO.	ITEM NUMBER	TOTAL QUANTITY	WEIGHT
1	1	SHELL, WELDMENT, CHAMBER, COMBUSTION, >			1156643	1.00	12867.05
2	1	ELBOW, WELDMENT, CHAMBER, COMBUSTION, >			1156645	1.00	7561.94
3	1	CONE, WELDMENT, CHAMBER, COMBUSTION, >			1156646	1.00	1384.46
4	1	BURNER, SYSTEM, 15MMBTU/HR, KINEDIZER, >			1156647	1.00	0.00
5	1	FAN, DILUTION AIR, SIZE_40-1/4, DESIGN_36A, >			1156648	1.00	0.00
6	1	PORT, OBSERVATION, SAF-T-EYE, TATE-JONES, >			1156624	1.00	0.00
7	94	BOLT, HCS, 5/8-11NCX2, GR-5, PLATED	PP-S		11449	94.00	21.45
8	94	NUT, HEX, 5/8-11NC, GR-5, PLATED	PP-S		1099152	94.00	6.89
9	94	WASHER, FLAT, 5/8, GR-2, PLATED	PP-S		1099266	94.00	7.24
10	94	WASHER, LOCK, SPLIT, 5/8, GR-2, PLATED	PP-S		1099212	94.00	2.26
11	8	BOLT, HCS, 1/2-13NCX1-1/2, GR-5, PLATED	PP-S		11423	8.00	0.93
12	8	WASHER, FLAT, 1/2, GR-2, PLATED	PP-S		1099136	8.00	0.31
13	8	WASHER, LOCK, SPLIT, 1/2, GR-2, PLATED	PP-S		1099137	8.00	0.10
14	4	BOLT, HCS, 3/8-16NCX1-1/2, GR-5	PP-S		11374	4.00	0.23
15	4	NUT, HEX, 3/8-16NC, GR-5, PLATED	PP-S		1099149	4.00	0.06
16	4	WASHER, FLAT, 3/8, GR-2, PLATED	PP-S		1099097	4.00	0.06
17	4	WASHER, LOCK, SPLIT, 3/8, GR-2, PLATED	PP-S		1099233	4.00	0.02

NOTE:

BLOWER FAN (SUPPLIED BY FEECO) FOR BURNER TO BE FIELD LOCATED AND MOUNTED BY OTHERS PER BURNER MANUFACTURERS INSTALLATION INSTRUCTIONS. PIPING BETWEEN BURNER AND BLOWER FAN TO BE SUPPLIED AND FIELD LOCATED BY OTHERS.

NOTE:

BLOWER FAN (SUPPLIED BY FEECO) FOR DILUTION AIR TO BE FIELD LOCATED AND MOUNTED BY OTHERS. DUCTING BETWEEN DILUTION AIR INLET AND BLOWER FAN TO BE SUPPLIED AND FIELD LOCATED BY OTHERS.



REFRACTORY NOTE:  $\Delta$   
MATERIALS SUPPLIED BY FEECO.  
INSTALLATION BY OTHERS.

NOTE: PAINT

PAINT PREP: STANDARD SURFACE PREP SSPC-SP-6 STEEL GRIT  
PRIMER COAT: TBD  
FINISH COAT: EQUIPMENT - SHERWIN WILLIAMS B59-58 SILVER BRITE  
HI HEAT PAINT (500-1000 °F TEMP. RATING)  
COLOR - SILVER  
VENDOR SUPPLIED COMPONENTS COME WITH THEIR STANDARD PAINT SYSTEM

LOADS SUMMARY		
Load #	D vert	L vert
Load #1	7.0	3.5
Load #2	7.0	3.5
Load #3	8.0	4.0
Load #4	6.0	3.0
Load #5	3.0	1.5

Notes:  
-All loads are in kips.  
-No factors or reductions have been applied to the loads.  
-Loads are worst case for locations shown.  
D = dead load L = live load

FEECO CERTIFIED PRINT

ORDER NO. 3371 DATE 04/10/14  
BY R. LOOCK SERIAL NO. CC20134446

UNLESS OTHERWISE SPECIFIED DIMENSIONS ARE IN INCHES. THE FOLLOWING TOLERANCES APPLY:  
DECIMAL DIMENSIONS - X.X ±.1"  
- X.XXX ±.005"  
FRACTIONAL DIMENSIONS - X/16 ±.015"  
- X/8 ±.010"  
- X/4 ±.015"  
- X/2 ±.020"  
- X ±.030"  
ANGULAR DIMENSIONS - 1/4° ±.01°  
INTERPRET DIM AND TOL PER ASME Y14.5M - 1994

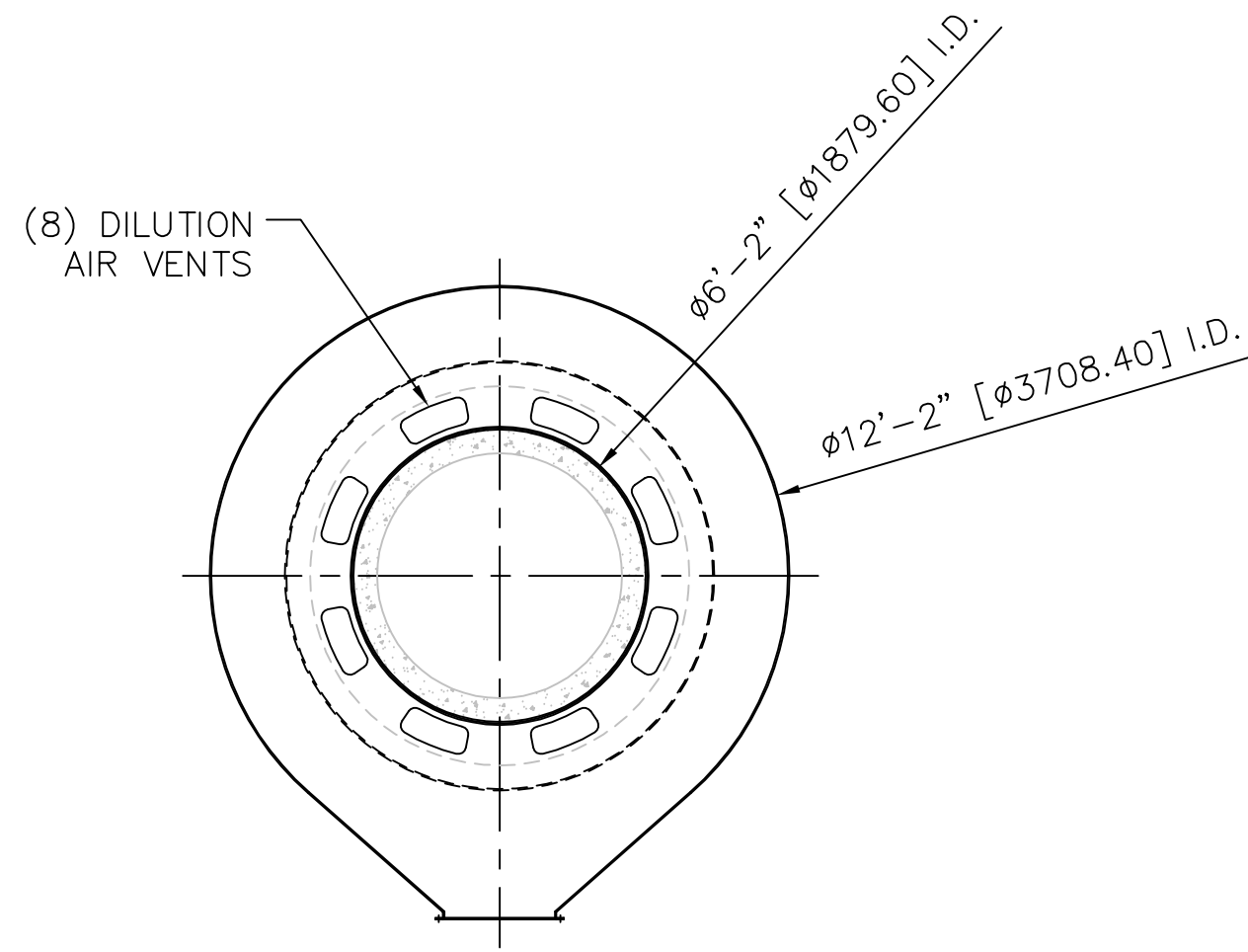
THIRD ANGLE PROJECTION

REV	DATE	DESCRIPTION	BY	APPRV
2	12/19/13	PLT. WAS 1/4", ADDED REFRACTORY NOTE	ADDED	BJW RL
1	12/12/13	REVISED PER CUSTOMER, SENT CERTIFIED		BJW RL
0	11/13/13	SUBMITTED FOR APPROVAL		BJW RL

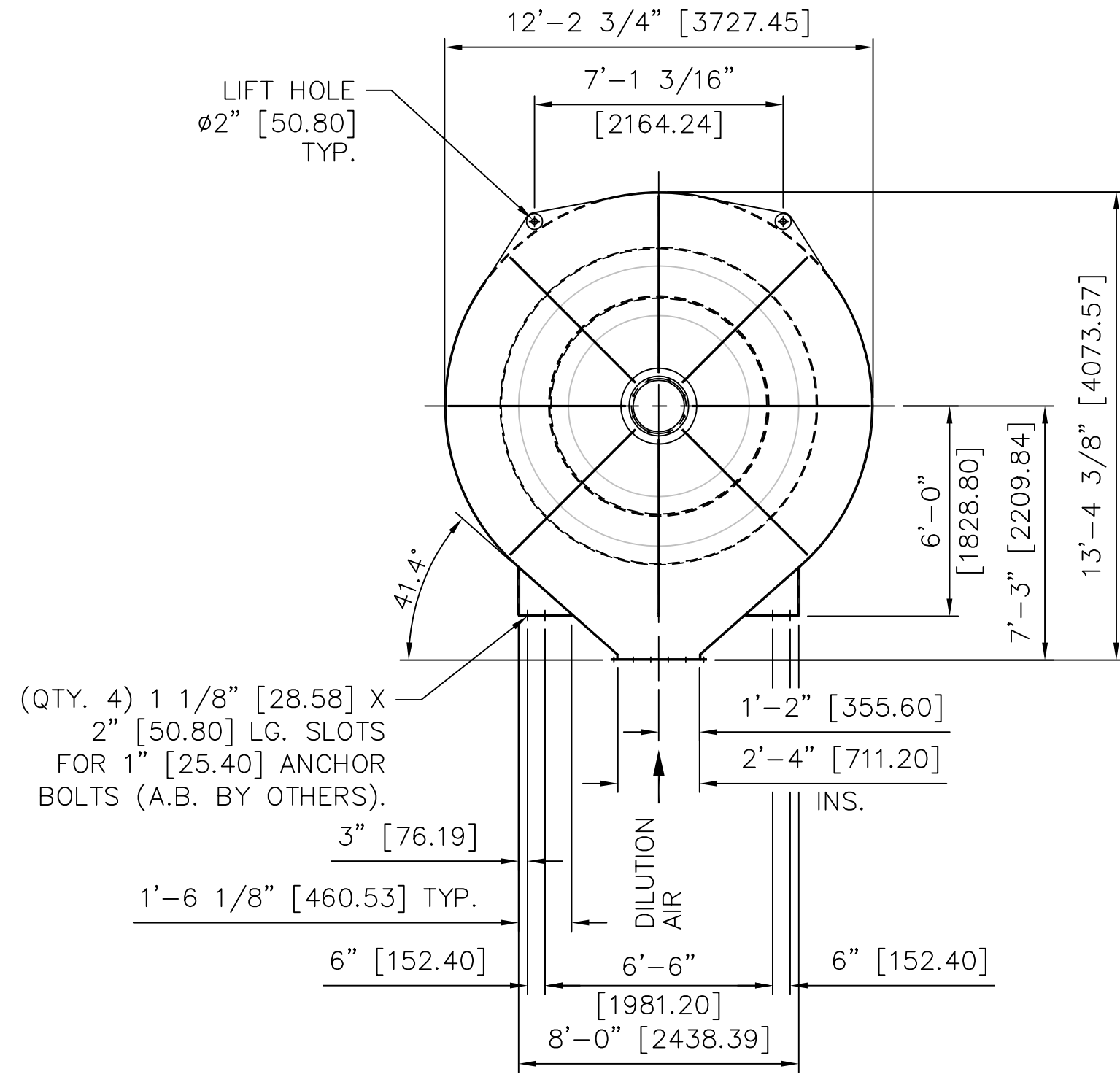
USED ON: 3371/9645-0000

DRAWN	DATE	TITLE	WEIGHT (U.S. LBS.)	SIZE	DWG. NO.	REV:
BJW	11/15/13	GENERAL ARRANGEMENT PELLET ROTARY DRYER BURNER, E-601 $\Delta$ 9'-0" [2743.20] I.D. X 11'-0" [3352.80] LG. W/SECONDARY AIR SUPPLY SULVARIS - VITASUL PROJECT	21853.00	D	1156302	2

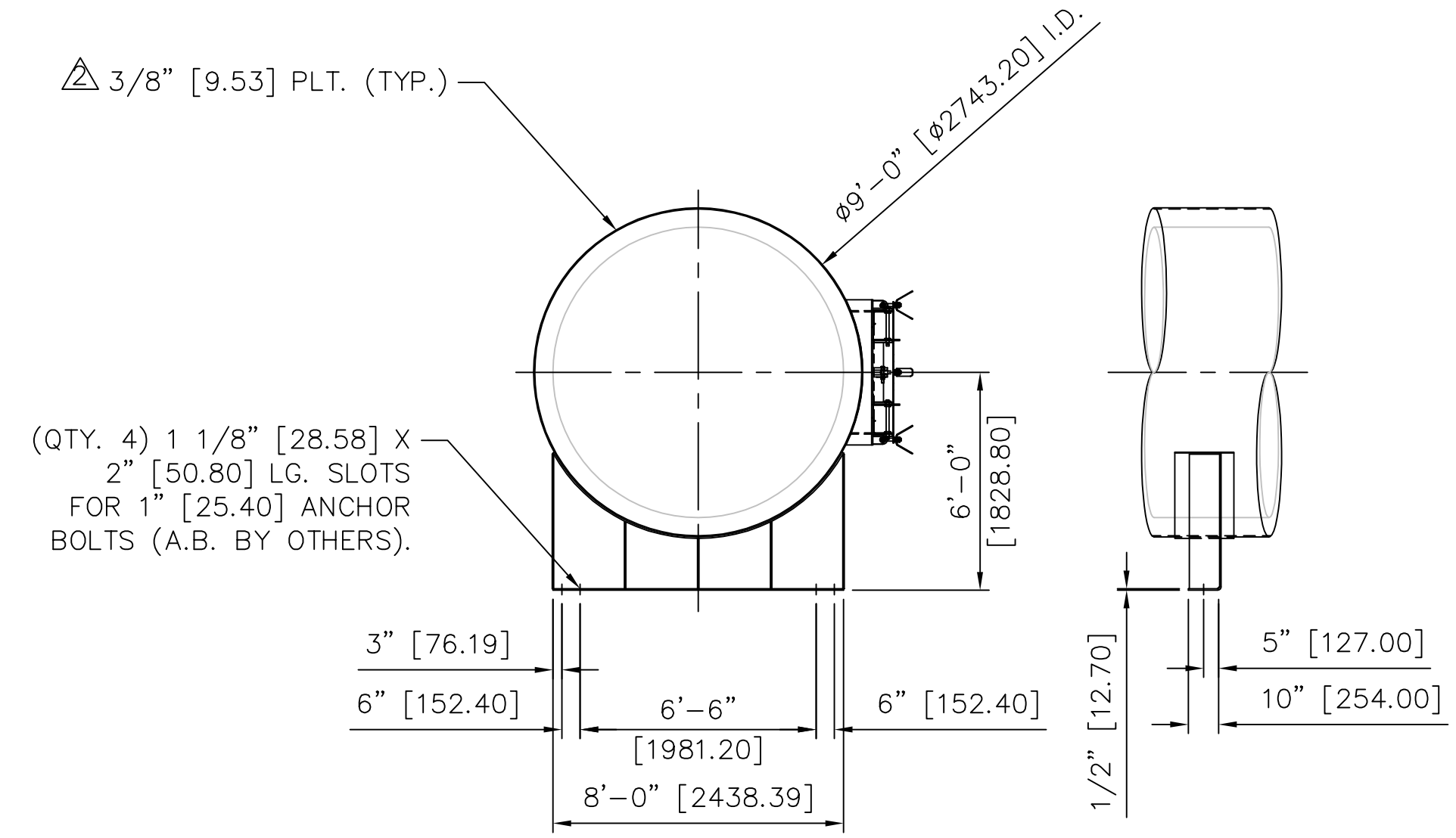
SCALE: 1/4"=1' SHEET 1 OF 2



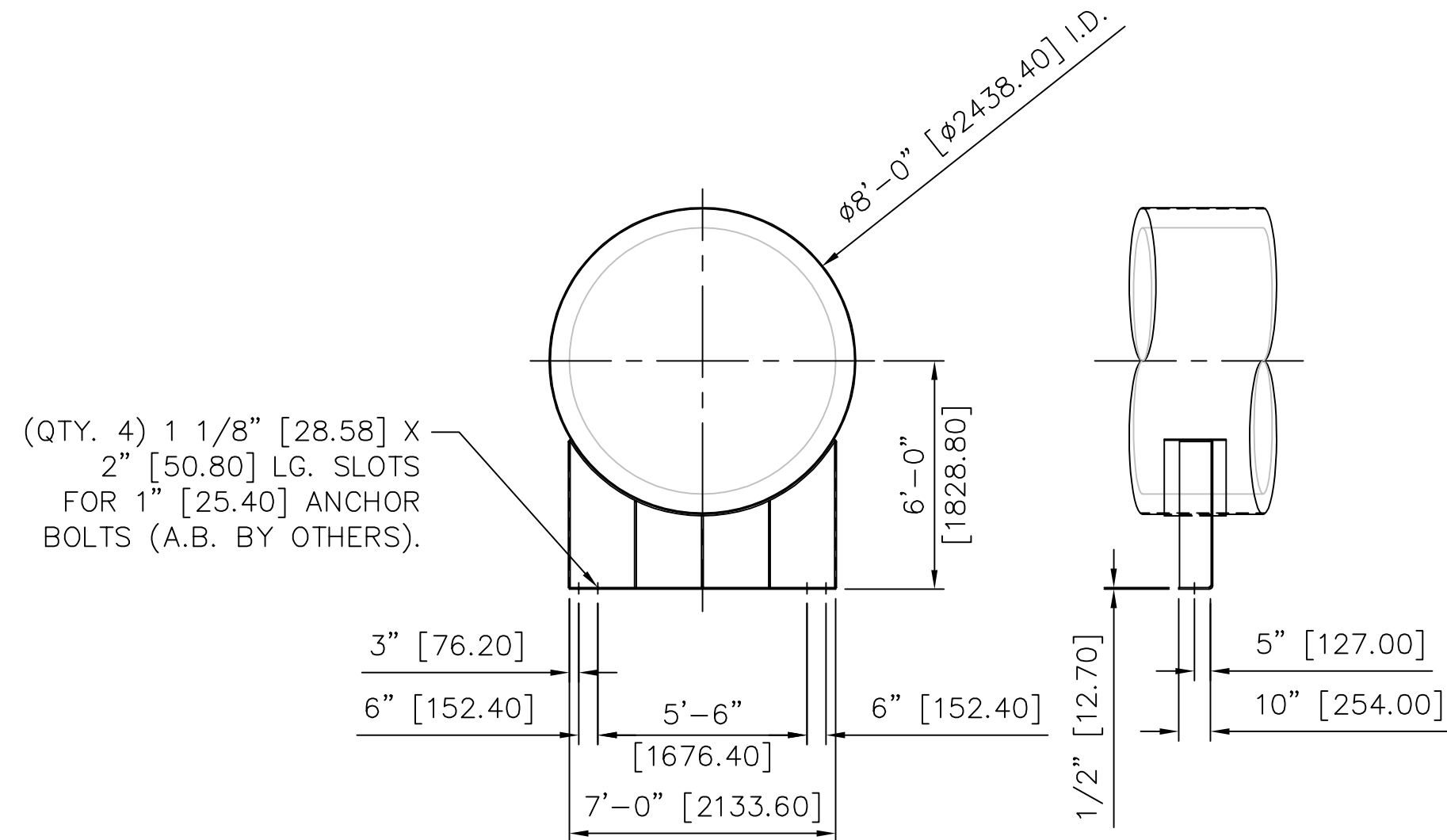
SECTION "A - A"  
SCALE: 1/4"=1"  
SHEET # 1  
ZONE B-4



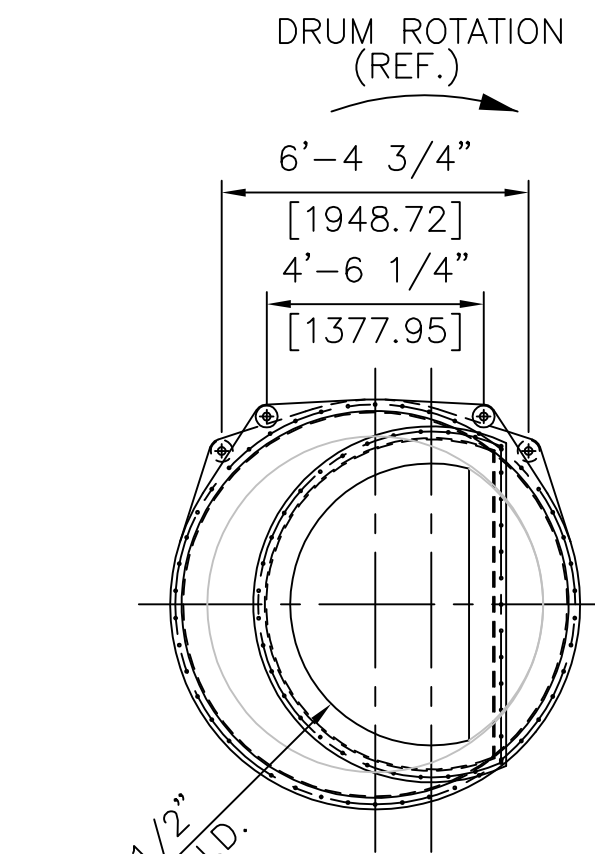
SECTION "B - B"  
SCALE: 1/4"=1"  
SHEET # 1  
ZONE B-4



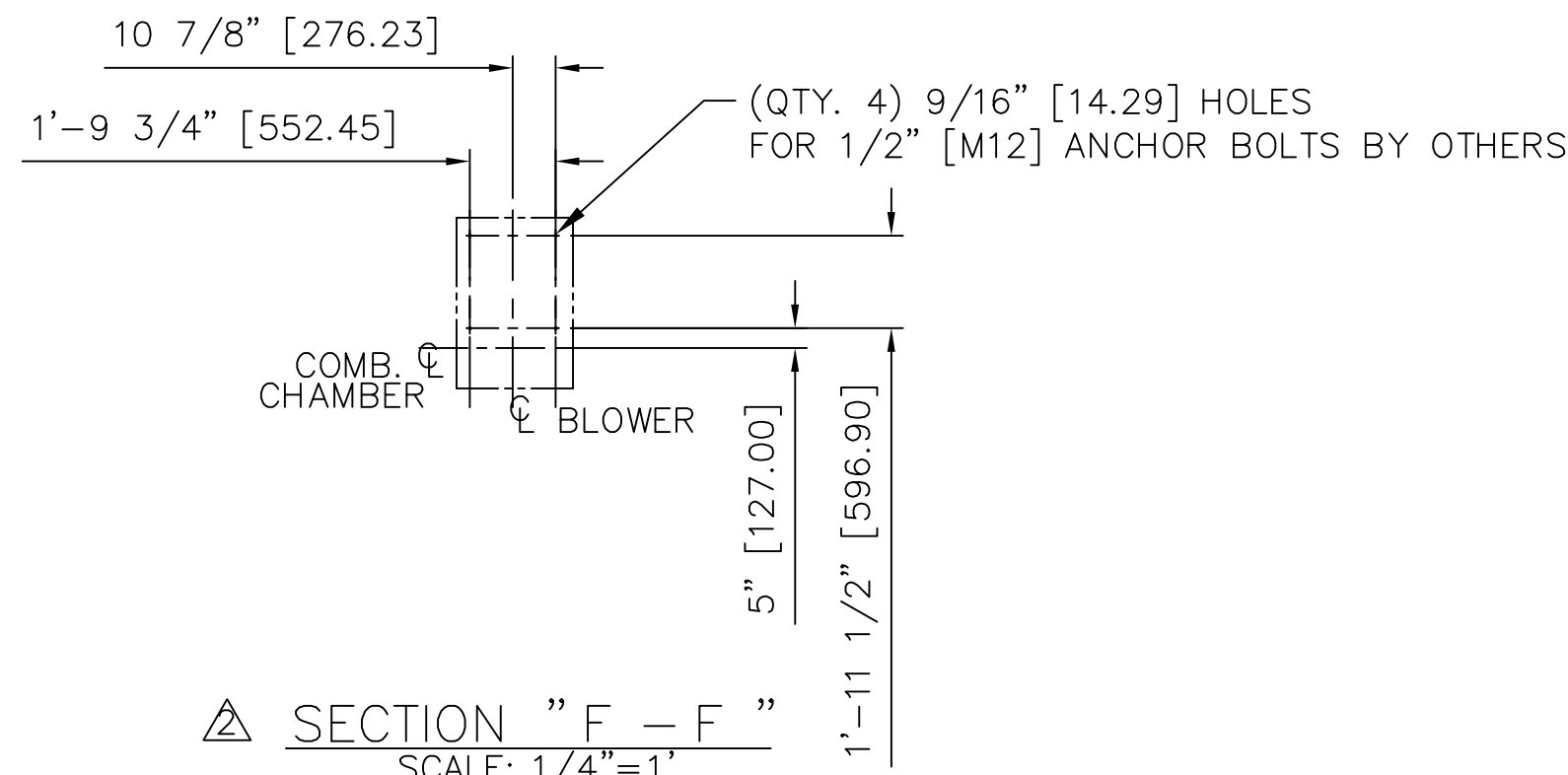
SECTION "C - C"  
SCALE: 1/4"=1"  
SHEET # 1  
ZONE B-4  
TYP. (2) PLACES



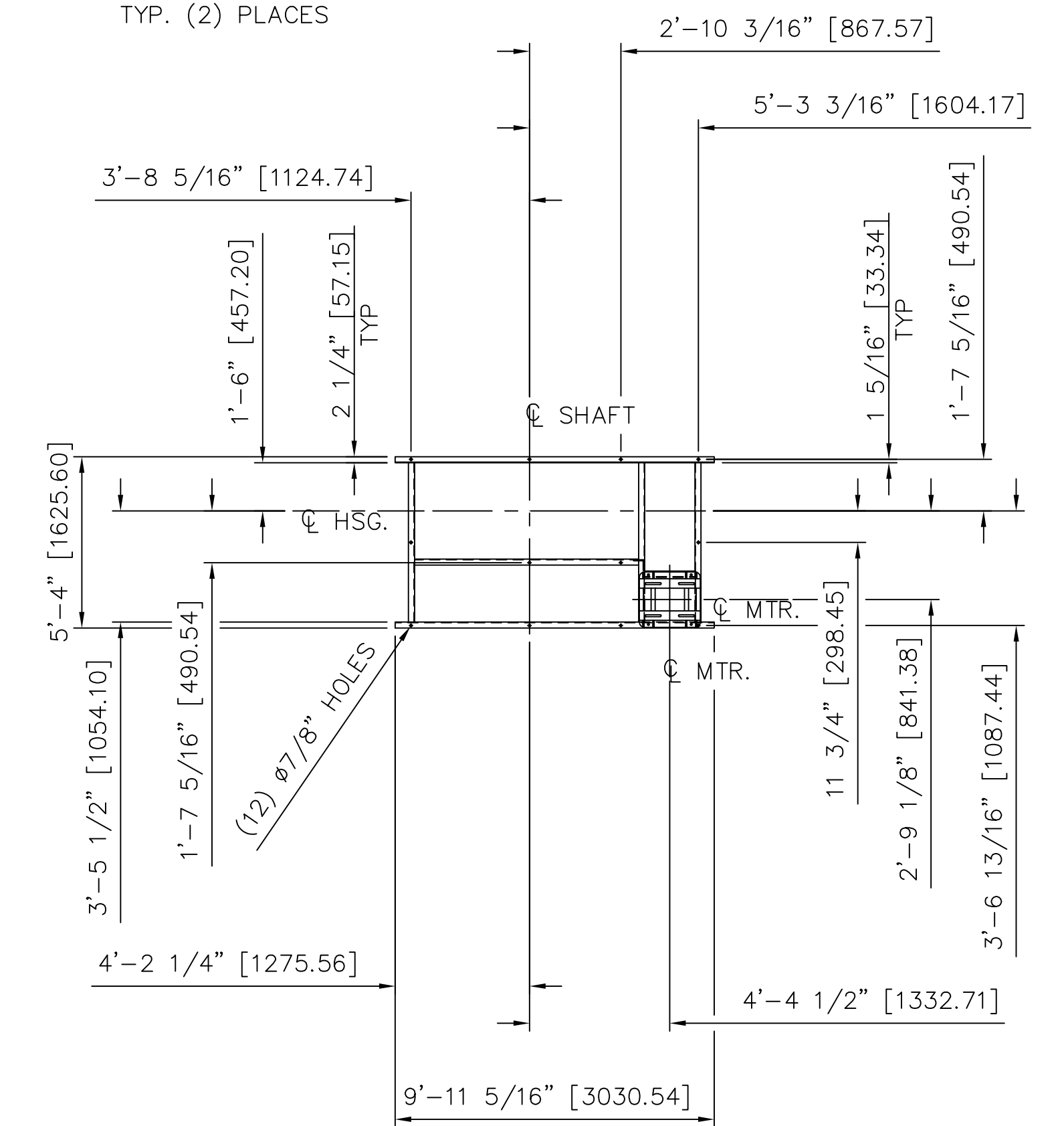
SECTION "D - D"  
SCALE: 1/4"=1"  
SHEET # 1  
ZONE C-5  
TYP. (2) PLACES



SECTION "E - E"  
SCALE: 1/4"=1"  
SHEET # 1  
ZONE C-5



SECTION "F - F"  
SCALE: 1/4"=1"  
SHEET # 1  
ZONE C-5



SECTION "G - G"  
SCALE: 1/4"=1"  
SHEET # 1  
ZONE A-4

UNLESS OTHERWISE SPECIFIED DIMENSIONS ARE IN INCHES. THE FOLLOWING TOLERANCES APPLY:		DRAWN DATE		USED ON: 3371/9645-0000	
DECIMAL DIMENSIONS -	.XX ±.1"	BWJ	11/15/13	GREEN BAY, WISCONSIN, U.S.A.	
FRACTIONAL DIMENSIONS -	1/16" ±.005"	CHECKED	RL	(920)469-5100 FAX: 469-5110	
ANGULAR DIMENSIONS -	±.010°	ENGINEER	BL	(800)373-9347	
	±.25°	RELEASED		TITLE	
THIS DRAWING AND THE INFORMATION CONTAINED HEREIN IS SUBMITTED CONFIDENTIALLY AND IS THE PROPERTY OF FEECO INTERNATIONAL. USE, REPRODUCTION OR DISCLOSURE OF THE CONTENT OF THIS DRAWING (OR ANY PORTION THEREOF) FOR ANY PURPOSE MUST BE APPROVED IN WRITING BY FEECO INTERNATIONAL.		DATE		GENERAL ARRANGEMENT	
THIRD ANGLE PROJECTION		11/13/13		PELLET ROTARY DRYER BURNER, E-601	
		11/13/13		9'-0" [2743.20] I.D. X 11'-0" [3352.80] LG.	
				W/SECONDARY AIR SUPPLY	
				SULVARIS - VITASUL PROJECT	
				WEIGHT (U.S.LBS) SIZE DWG. NO. 1156302	
				21853.00 D SCALE: 1/4"=1" SHEET 2 OF 2	