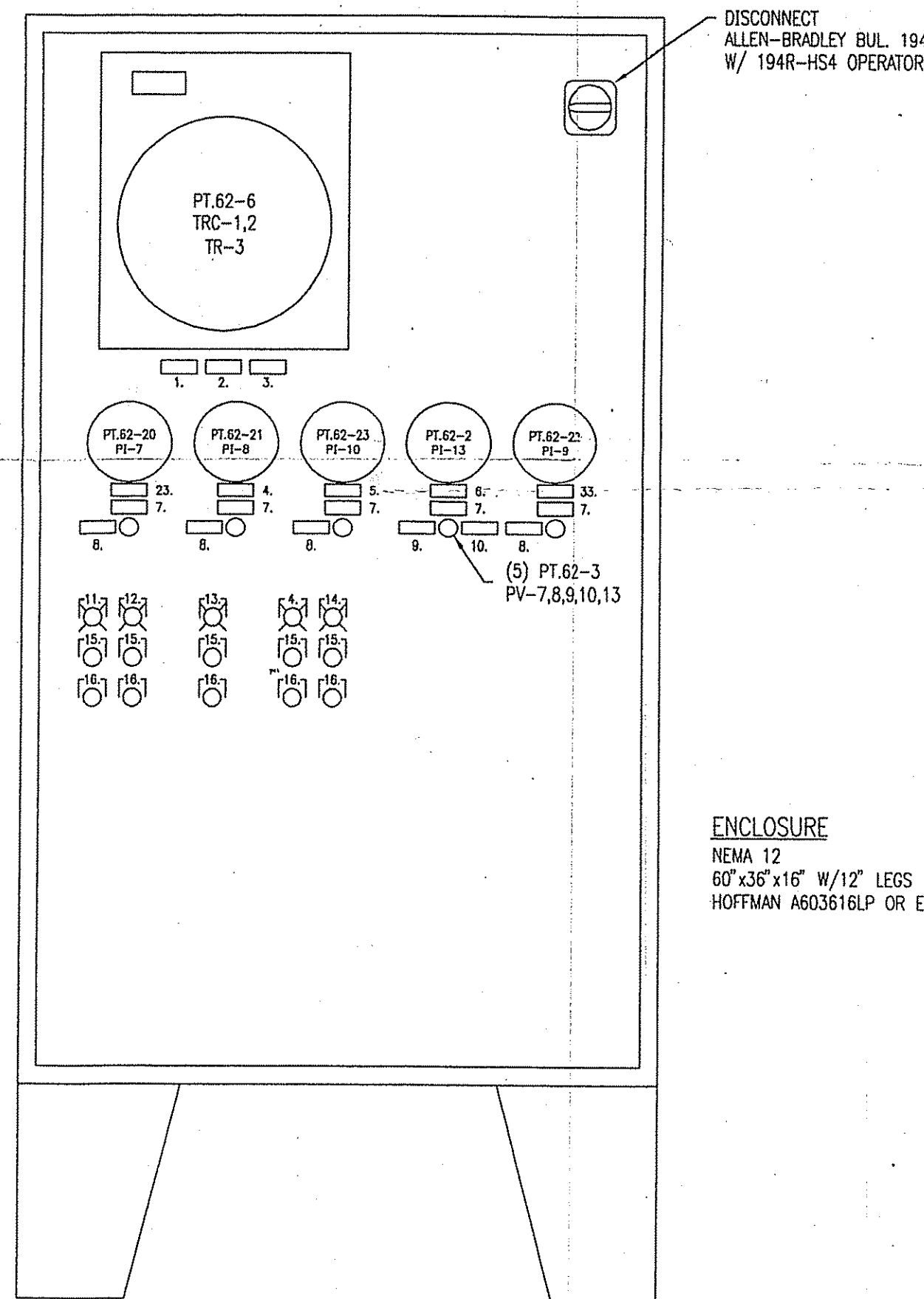
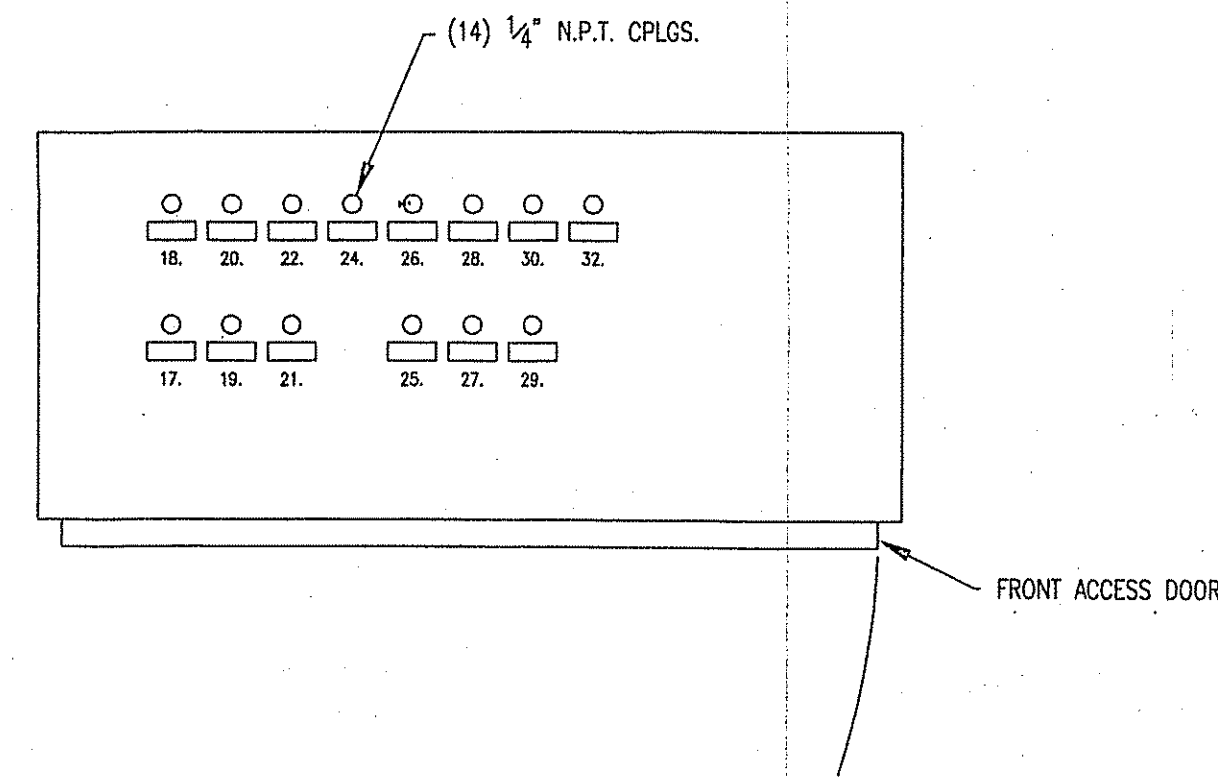
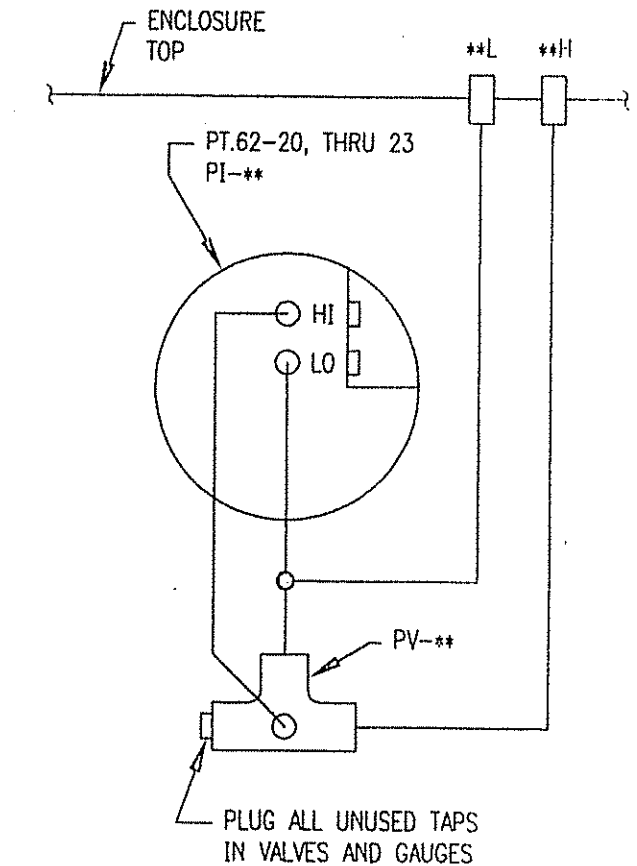
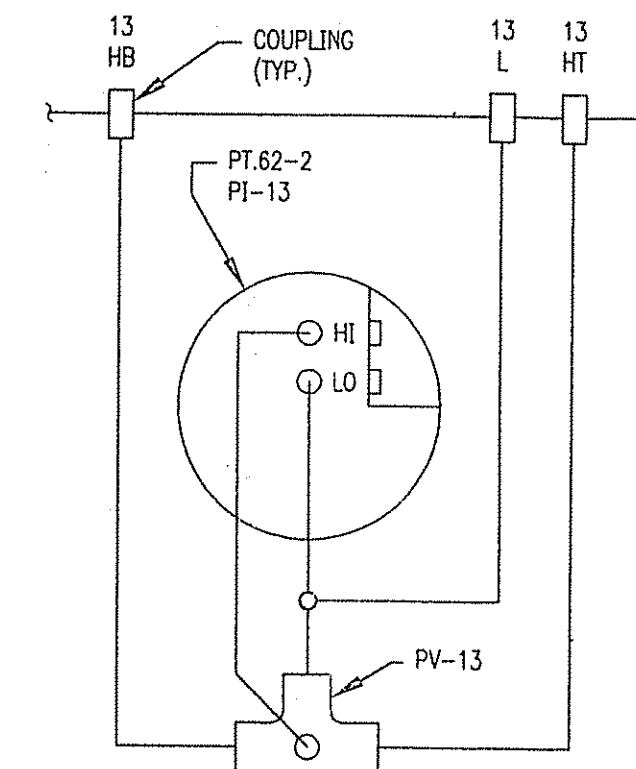
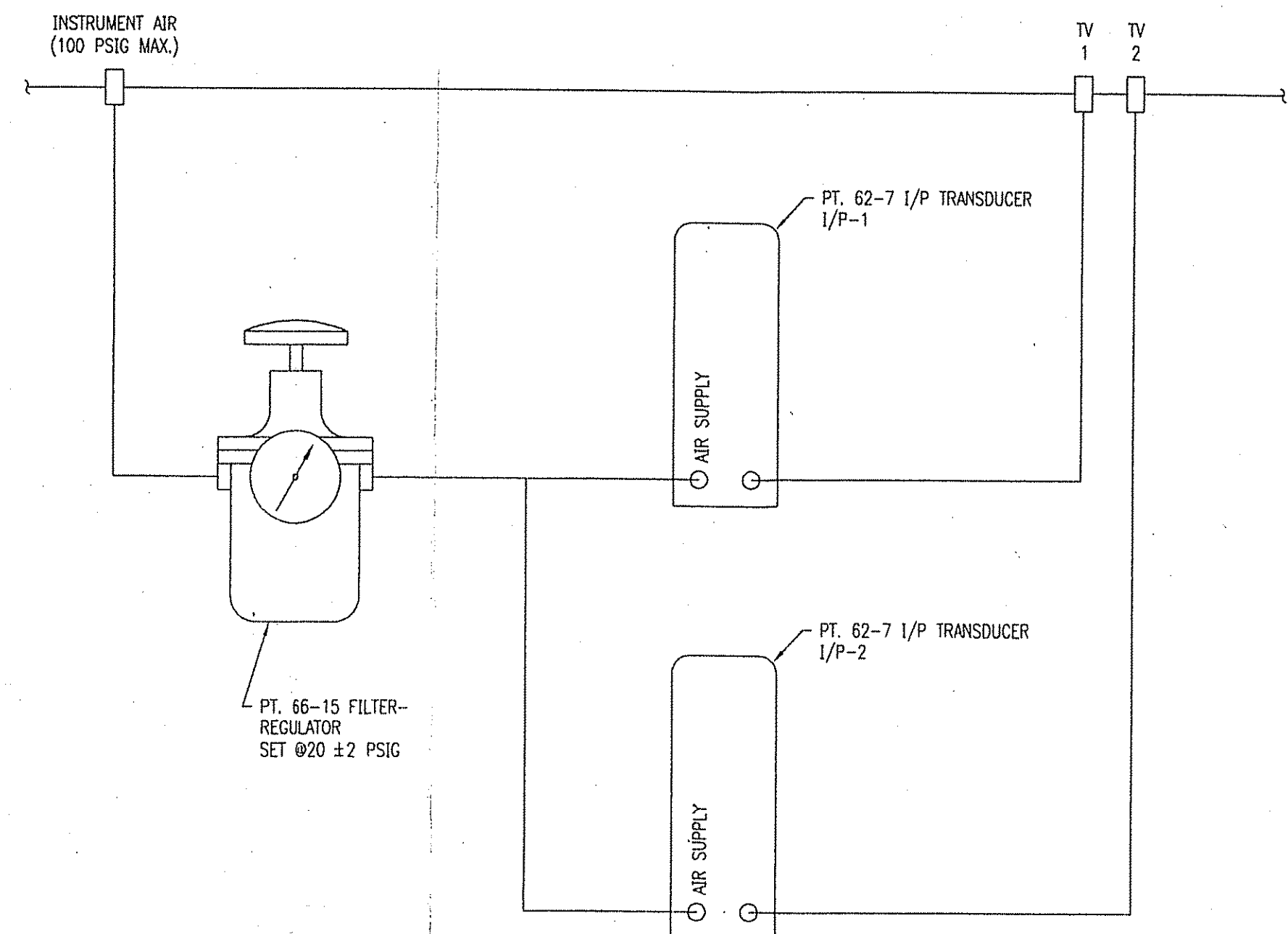


INSTRUMENT PIPING

DRAFT & Δ P GAUGE PIPING  
VIEWED FROM REAR OF GAUGE



ENCLOSURE  
NEMA 12  
60"x36"x16" W/1/2" LEGS  
HOFFMAN A603616LP OR EQUAL



\*\* PIPING SHOWN IS TYPICAL FOR PI- 7, THRU 10 USE GAUGES AND LABEL TAPS AS LISTED:

**	PT. NO.	RANGE
7	62-20	0-2" W.C.
8	62-21	0-4" W.C.
9	62-22	0-3" W.C.
10	62-23	0-1" W.C.

SHOP NOTES

- ALL INTERNAL PNEUMATIC LINES ARE 1/4" IMPERIAL EASTMAN "POLY-FLO".
- ALL FITTINGS BRASS OR STAINLESS STEEL.
- SEAL INSTRUMENTS TO PANEL WITH CLEAR SILICONE SEALANT OR SILICONE GASKETS.

FIELD NOTES

- ENTRANCE HOLE FOR FIELD WIRING TO BE LOCATED AND CUT BY CUSTOMER.
- THIS CONTROL PANEL SUITABLE FOR USE IN NON-HAZARDOUS AREAS ONLY.

**FOR APPROVAL**  
JUL 10 1998

PLEASE RETURN WITH YOUR COMMENTS FOR APPROVAL BY JUL 24 1998 BY AIR MAIL RETURNS AFTER THIS DATE MAY INCUR DELAYS IN FABRICATION AND DELIVERY

NAMEPLATE LEGEND

- |                        |                                  |
|------------------------|----------------------------------|
| 1. 1-DRYER TOP TEMP.   | 23. INLET FILTER                 |
| 2. 2-DRYER BOT. TEMP.  | 24. 13HB                         |
| 3. 3-MANIFOLD TEMP.    | 25. 10L                          |
| 4. INLET FAN           | 26. 10H                          |
| 5. HEATER              | 27. 9L                           |
| 6. DRYER               | 28. 9H                           |
| 7. ZERO GAUGE          | 29. INSTRUMENT AIR               |
| 8. Δ P                 | 30. TV1                          |
| 9. TOP                 | 31.                              |
| 10. BOTTOM             | 32. TV2                          |
| 11. TURBO FAN          | 33. MIST ELIMINATOR/COOLING COIL |
| 12. DISCHARGE AIRLOCK  | 34.                              |
| 13. TRAYS              | 35.                              |
| 14. MULTI-SCREW FEEDER | 36.                              |
| 15. START              | 37.                              |
| 16. STOP               | 38.                              |
| 17. 7L                 | 39.                              |
| 18. 7H                 | 40.                              |
| 19. 8L                 | 41.                              |
| 20. 8H                 | 42.                              |
| 21. 13L                | 43.                              |
| 22. 13HT               | 44.                              |

CUST. P.O.: 13805MW		SCALE: NONE		REV. DRAWN BY: VG 06/01/98	
(J384) S01-98002		DWG. NO. J384-X066-1		CHECKED BY: JU 07/08/98	
This drawing is the property of WYSSMONT CO. INC. and is not to be reproduced or used to furnish any information for making of drawings or apparatus except where provided for by agreement with said company.		S:\R12_DWG\66\384066-1.DWG		APP'VD. BY:	

REV.	BY	DATE	DESCRIPTION	APP'VD.
CONTROL PANEL LAYOUT AND PIPING				
WYSSMONT COMPANY, Inc.				
FORT LEE, NEW JERSEY				