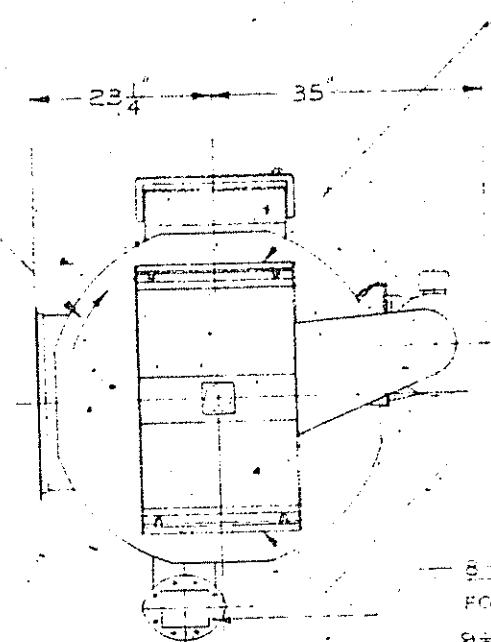
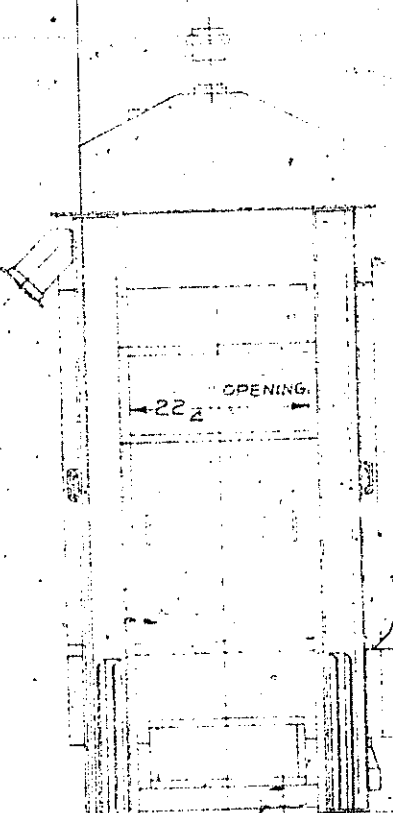
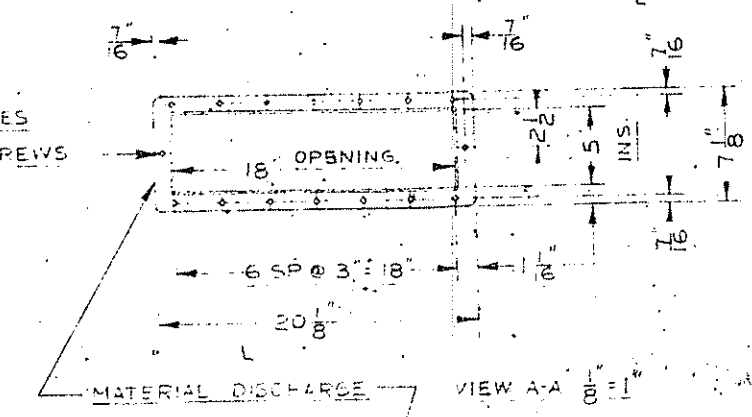


DIRECTION OF ROTATION
AIR DISCHARGE CONNECTION
1" WIDE, 3/8" THICK FLANGE

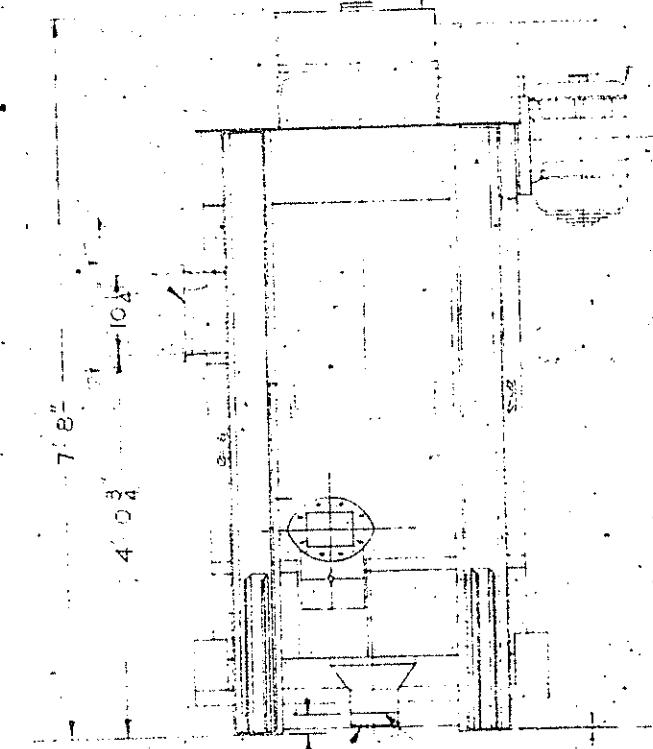


NOTE:
ROTOR SPEED: 425 RPM.
SHAFT: 3/8" D.A., 3/8" x 3/16" KEYWAY.
MACHINE NET WEIGHT WITHOUT MOTOR: 1465#

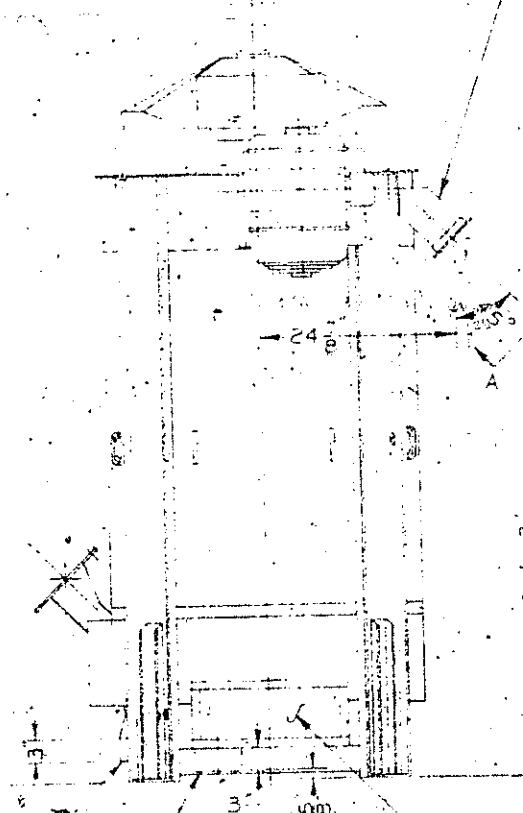
6 FLANGE HOLES FOR 5/16" DIA SCREWS
8 FLANGE HOLES FOR 3/8" DIA SCREWS
8 3/8" DIA 60QT CIRCLE



EDGE & VERTICAL CENTRIFUGAL SPEED RESPONSE SWITCH



1800 RPM



ENGINEERING DATA
FILE COPY

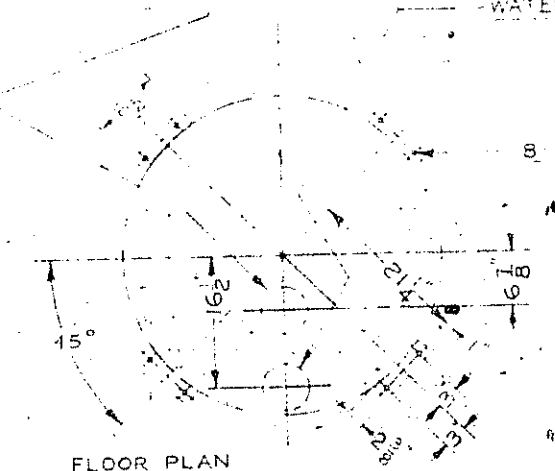
REC'D. ENGR. DEPT.
AUG 29 1969
FOR FILE DISTRIBUTION

FLUSHING WATER DRAIN
6" O.D. TUBING

WATER DISCHARGE

AIR FILTER 8" x 20" x 1", 2-PLACES
FLUSHING WATER DRAIN
6" O.D. TUBING

8 3/8" DIA ANCHOR BOLTS



FLOOR PLAN

CERTIFIED PRINT
CUSTOMER'S ORDER NO. 526263-B
OUR ORDER NO. 66665
CARTER-DAY Company
BY KEE DATE 8-25-69

TAG:
SPEC. NO. PC-7121
63-25-1005, 2005 & 3005

DATA, INSTALLATION	
SIMON-CARTER CO. MINNEAPOLIS, MINN.	
DRAWN BY KEE 7-23-69	SCALE 3/4" = 1'-0"
TRACED BY	66665
CHECKED BY	
APP'D BY	